

2013 EMPLOYMENT REPORT

KELLOGG WORKS

CAREER MANAGEMENT CENTER

A lifelong partner for career development.
An ever-deeper pool of talent for the world
of business and beyond.

**On behalf of the Kellogg Career Management Center,
thank you for your partnership.**

We are thrilled that you are an active part of the Kellogg School of Management community. Your willingness to engage and recruit our students led to strong employment numbers among the graduated class of 2013 and the summer intern class of 2014. We hope that these talented new hires — all of whom are smart, agile and collaborative — will help drive further success at your organization, and that they realize their full leadership potential with you.

Enclosed are employment statistics for both classes. These key demographics paint a clear picture of our robust employment landscape.

In a rapidly changing and uncertain economy, Kellogg students continue to bring intellectual rigor, strong collaborative skills and a global perspective to their employers. We hope that as you gain a sense of your hiring needs for this year, you will reach out and let us know how we can assist you.

We look forward to working with you for many years to come.

Adnan Rukieh

Director, Part-Time and
Executive MBA Career Services

Liza Kirkpatrick

Director, Employer Relations

CONTENTS

1

CLASS OF 2013

- 2 Class of 2013 Profile
- 3 Base Salary Acceptances, Class of 2013
- 5 Major Industries Chosen by Graduates, 2009–2013
Base Salary Acceptances by Industry, Class of 2013
- 6 Major Functions Chosen by Graduates, 2009–2013
Base Salary Acceptances by Function, Class of 2013
- 7 Major Employers, Class of 2013
- 8 Sign-On Bonus Acceptances, Class of 2013
- 9 Corporate Recruiting Partners, 2012–2013
- 12 Job Acceptances by Organization, Class of 2013

19

CLASS OF 2014 SUMMER INTERNSHIPS

- 20 Major Industries Chosen by Summer Interns, 2009–2013
Monthly Salaries of Summer Interns by Industry, Class of 2014
- 21 Major Functions Chosen by Summer Interns, 2009–2013
Monthly Salaries of Summer Interns by Function, Class of 2014
- 22 Major Employers of Summer Interns, Class of 2014
- 23 Summer Intern Acceptances by Organization, Class of 2014

29

CORPORATE AFFILIATES, FISCAL YEAR 2012–2013

30

CAREER MANAGEMENT CENTER STAFF

CLASS OF 2013

CLASS OF 2013 PROFILE

DEMOGRAPHICS

Students graduating in the class of 2013	750
Two-Year MBA students	479
One-Year MBA students	97
Part-Time MBA students ¹	84
MMM students ²	60
JD-MBA students ³	30
Age range at graduation ⁴	27-32
Full-time work experience range (years) ⁴	3-7
Women	33%
U.S. minority	22%
International citizenship	36%

GEOGRAPHIC REGION OF MBA ENTRANTS

Northeast	17%
Mid-Atlantic	7%
South	5%
Midwest	19%
Southwest	6%
West	13%
International	34%

EMPLOYMENT SUMMARY⁵

Graduates seeking full-time employment, class of 2013	682
Job acceptances reported	624
First-year students seeking internships, class of 2014	527
Internship acceptances reported	520

Percentages have been rounded to the nearest whole number.

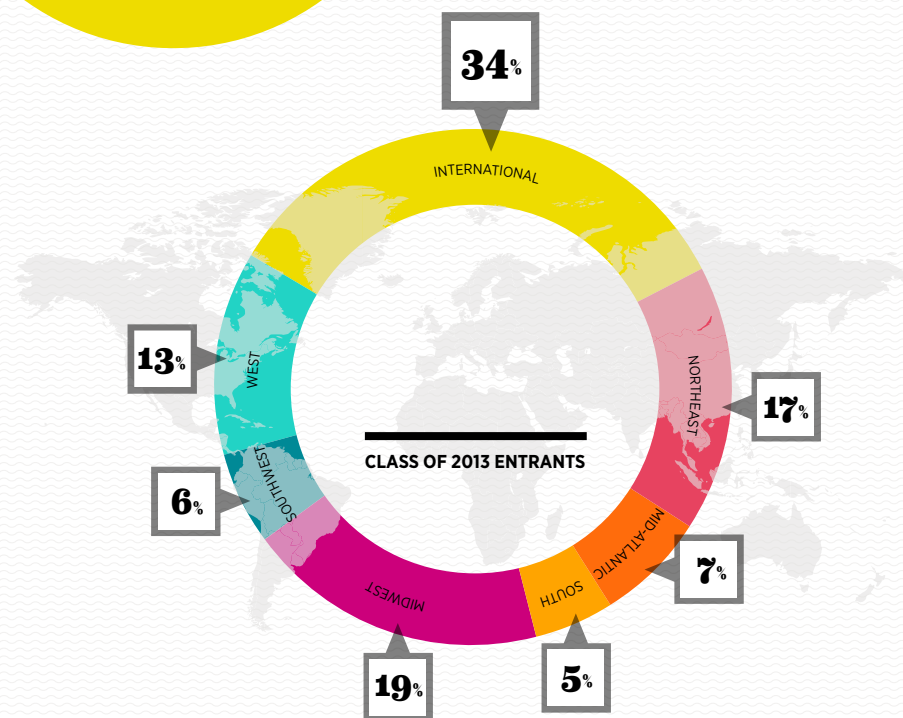
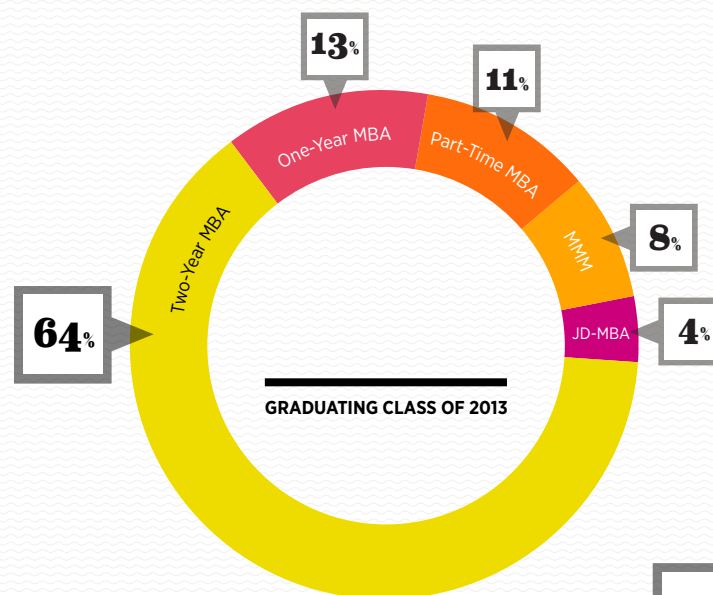
¹ Part-Time MBA students eligible to use CMC services.

² Dual-degree (MBA + MEM) program in design and operations.

³ Dual-degree Northwestern Law/Kellogg students.

⁴ Represents the middle 80%.

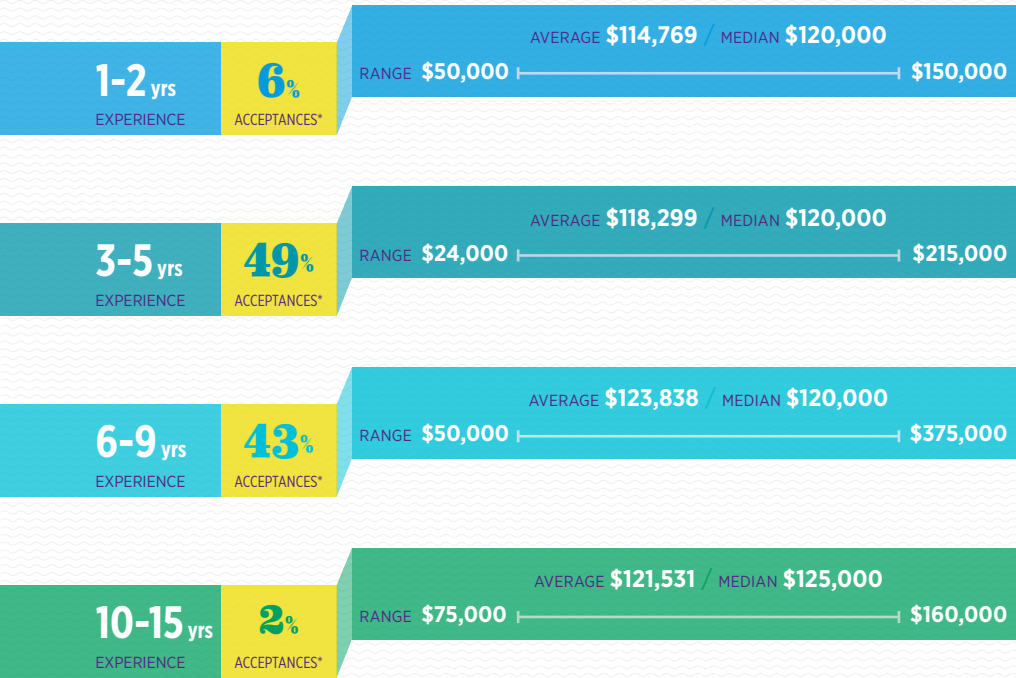
⁵ As reported to the Career Management Center.



CLASS OF 2013

BASE SALARY ACCEPTANCES

BY WORK EXPERIENCE



BY UNDERGRADUATE DEGREE

DEGREE	ACCEPTANCES (%)*	RANGE (\$)	AVERAGE (\$)	MEDIAN (\$)
Nontechnical	39	24,000–350,000	118,601	120,000
Technical	51	50,000–375,000	121,748	120,000
Other	10	52,275–175,000	122,164	125,000

BY AGE

AGE	ACCEPTANCES (%)*	RANGE (\$)	AVERAGE (\$)	MEDIAN (\$)
24–26	4	50,000–150,000	113,291	120,000
27–29	54	24,000–300,000	117,213	120,000
≥ 30	42	75,000–375,000	125,456	120,000

BY GENDER

GENDER	ACCEPTANCES (%)*	RANGE (\$)	AVERAGE (\$)	MEDIAN (\$)
Female	33	50,000–300,000	115,196	115,000
Male	67	24,000–375,000	123,221	120,000

Based on 87.3% of job accepting graduates who provided usable salary information.

* Percentages have been rounded to the nearest whole number.

BASE SALARY ACCEPTANCES

BY GEOGRAPHIC REGION

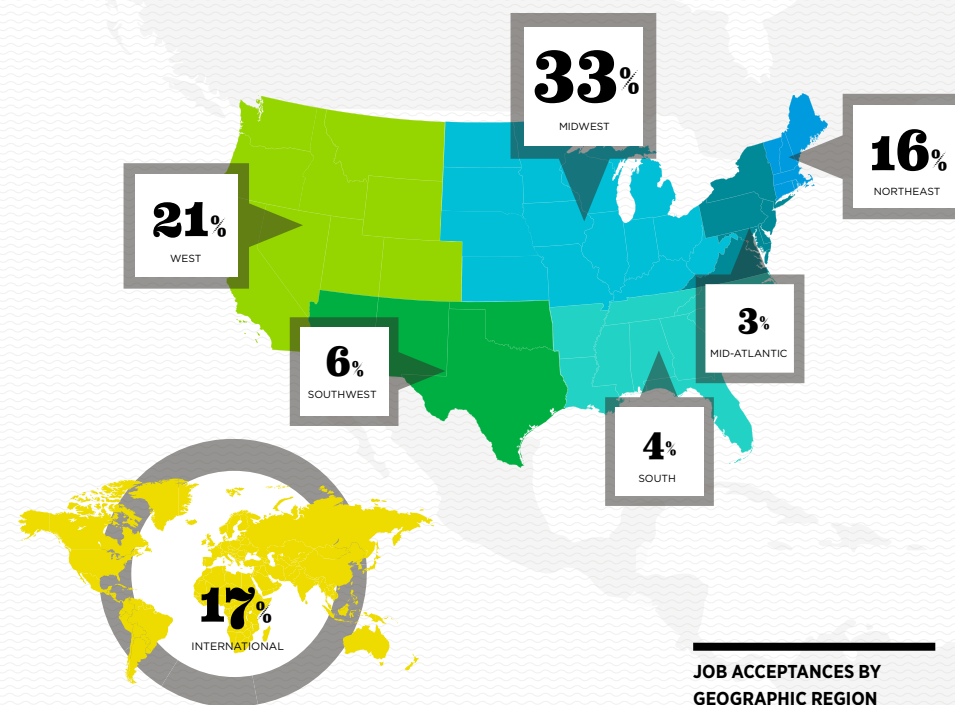
REGION	ACCEPTANCES (%)*	RANGE (\$)	AVERAGE (\$)	MEDIAN (\$)
United States	83	50,000–375,000	120,930	120,000
Northeast	16	57,000–375,000	124,610	125,000
Boston	3	90,000–350,000	138,750	135,000
New York City	12	57,000–375,000	123,452	125,000
Other Northeast	1	96,500–125,000	105,313	100,500
Mid-Atlantic	3	75,000–136,500	111,456	111,350
Washington, D.C.	2	75,000–136,500	112,836	112,000
Other Mid-Atlantic	1	95,000–125,000	109,286	110,000
South	4	72,000–136,000	115,136	112,500
Atlanta	2	95,000–136,000	127,889	135,000
Other South	2	72,000–130,000	106,308	110,000
Midwest	33	50,000–300,000	118,455	120,000
Chicago	27	50,000–300,000	120,793	125,000
Minneapolis/St. Paul	3	100,000–135,000	106,786	102,500
Other Midwest	3	78,000–135,000	108,700	110,000
Southwest	6	95,000–275,000	129,161	130,000
Dallas	3	95,000–275,000	128,933	130,000
Houston	2	105,000–225,000	139,444	130,000
Other Southwest	1	95,000–135,000	116,429	120,000
West	21	50,000–275,000	122,424	120,000
Bay Area	12	50,000–275,000	126,945	128,000
Los Angeles	3	80,000–206,000	122,294	120,000
Seattle	4	94,000–135,000	115,095	115,000
Other West	2	90,000–160,000	111,545	100,000

Based on 87.3% of job accepting graduates who provided usable salary information.

* Percentages have been rounded to the nearest whole number.

† Less than 1 percent of accepted offers.

REGION	ACCEPTANCES (%)*	RANGE (\$)	AVERAGE (\$)	MEDIAN (\$)
International	17	24,000–220,000	118,654	120,000
Africa	†			
Asia — East	5	67,500–163,000	114,459	115,700
Asia — South/Southeast	2	52,275–130,000	96,228	102,500
Australia/South Pacific	†			
Central America/Caribbean	1	100,000–136,500	117,776	120,000
Europe	1	102,850–135,000	119,827	120,550
Middle East	1	115,000–220,000	148,600	135,000
North America — Non-U.S.	1	110,000–175,000	138,810	135,000
South America	4	100,000–215,000	121,908	118,000

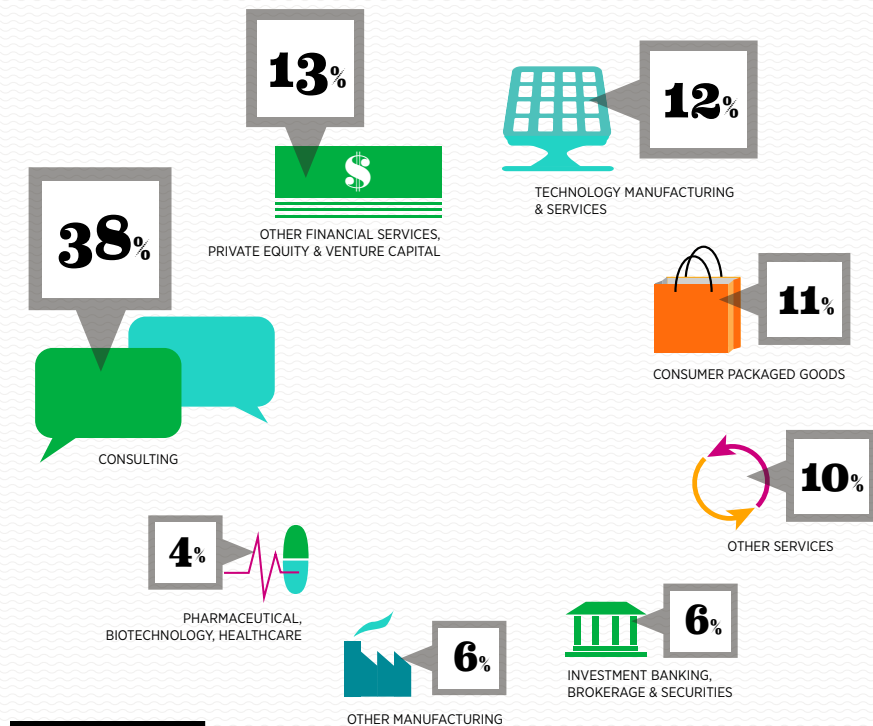


**JOB ACCEPTANCES BY
GEOGRAPHIC REGION**

MAJOR INDUSTRIES

CHOSEN BY GRADUATES, 2009–2013

INDUSTRY	ACCEPTANCES (%)*				
	2013	2012	2011	2010	2009
Consulting	38	39	37	31	38
Consumer Packaged Goods	11	9	10	12	10
Investment Banking, Brokerage & Securities	6	7	7	6	5
Other Financial Services, Private Equity & Venture Capital	13	12	12	10	10
Other Manufacturing	6	6	5	8	5
Other Services	10	10	12	14	15
Pharmaceutical, Biotechnology, Healthcare	4	5	7	8	8
Technology Manufacturing & Services	12	12	10	11	9



**JOB ACCEPTANCES BY
SELECTED INDUSTRIES**

BASE SALARY ACCEPTANCES

BY INDUSTRY, CLASS OF 2013

INDUSTRY	ACCEPTANCES (%)*	RANGE (\$)	AVERAGE (\$)	MEDIAN (\$)
Manufacturing	24	75,000–225,000	109,317	106,000
Energy/Utilities	1	95,000–225,000	138,375	130,000
Food and Beverage	8	80,000–125,000	100,051	100,000
General Healthcare	1	103,000–115,000	109,000	109,000
Household/Personal	2	95,000–120,000	104,400	100,000
Medical Devices	1	106,000–115,000	110,583	110,000
Other Manufacturing	3	90,000–125,000	113,865	120,000
Software	3	90,000–125,000	112,051	113,500
Technology Equipment/ Hardware/Networking	2	89,000–141,000	123,621	128,000
Services	76	24,000–375,000	124,197	125,000
Consulting	38	50,000–175,000	129,570	135,000
Diversified Financial Services	2	72,000–160,000	115,091	115,000
Healthcare Providers & Services	2	95,000–120,000	113,830	115,000
Internet Services/E-Commerce	4	75,000–140,000	115,217	115,000
Investment Banking/Brokerage	6	100,000–163,000	111,059	100,000
Investment Management	3	70,000–375,000	121,900	100,000
Law/Legal Services	1	112,000–170,000	150,500	160,000
Nonprofit	1	50,000–95,000	74,625	76,750
Private Equity	5	100,000–350,000	156,484	125,000
Real Estate	1	50,000–125,000	102,311	106,740
Retail	3	94,000–125,000	109,094	110,000
Telecommunication Services	1	100,000–135,000	121,125	121,000
Transportation Services	1	96,000–206,000	129,500	108,000
Venture Capital	1	120,000–175,000	140,000	130,000

Based on 87.3% of job accepting graduates who provided usable salary information.

* Percentages have been rounded to the nearest whole number.

The following industries were each represented by less than 1 percent of reported acceptances and are not included in the above table: Advertising/Marketing Services, Aerospace/Aviation/Defense, Agribusiness, Apparel/Textiles, Automotive, Biotechnology, Commercial Banking, Construction, Economic Development/Microfinance, Education, Electronics, Entertainment/Leisure/Recreation, Financial – Other, Healthcare – Other, Heavy Equipment, Hedge Funds, Hospitality/Tourism, Insurance, Media, Metals/Mining, Multimedia Products & Services, Pharmaceuticals, Radio/TV/Cable/Film, Sports & Sports Management, Technology – General

MAJOR FUNCTIONS

CHOSEN BY GRADUATES, 2009–2013

FUNCTION	ACCEPTANCES (%)*				
	2013	2012	2011	2010	2009
Business Development	3	4	3	4	4
Consulting**	38	40	40	34	41
Finance	18	17	18	17	15
Management	11	8	8	9	6
Marketing	17	20	19	25	20
Other	7	7	8	7	7
Strategic Planning	6	4	4	4	7



**JOB ACCEPTANCES
BY FUNCTION**

BASE SALARY ACCEPTANCES

BY FUNCTION, CLASS OF 2013

FUNCTION	ACCEPTANCES (%)*	RANGE (\$)	AVERAGE (\$)	MEDIAN (\$)
Business Development	3	50,000–150,000	115,731	120,000
Consulting	38	24,000–175,000	128,976	135,000
Finance	18			
Corporate Finance	2	94,000–130,000	111,001	110,000
General Finance	2	95,000–155,000	115,000	115,000
Investment Banking	6	100,000–163,000	109,613	100,000
Investment Management	3	50,000–375,000	125,389	110,000
Mergers & Acquisitions	2	100,000–350,000	167,350	133,250
Other Finance	1	95,000–220,000	137,500	125,000
General Technology	1	110,000–135,000	119,800	120,000
Lawyer/Legal Professional	1	80,000–170,000	136,400	160,000
Management	11			
General Management/ Leadership Development	8	75,000–206,000	114,324	115,000
Operations/Production	1	120,000–127,000	123,400	125,000
Project Management	1	75,000–110,500	95,125	97,500
Marketing	17			
Brand/Product Management	11	78,000–140,000	103,717	100,000
Buyer/Merchandising	1	93,900–115,000	108,150	110,000
General Marketing	2	75,000–120,000	104,917	108,000
Sales	1	75,000–120,000	102,750	100,000
Other	2	90,000–300,000	135,556	120,000
Strategic Planning	6	57,000–225,000	114,323	112,500

Based on 87.3% of job accepting graduates who provided usable salary information.

*Percentages have been rounded to the nearest whole number.

** Includes consulting positions with public accounting firms as well as internal corporate consulting.

The following industries were each represented by less than 1 percent of reported acceptances and are not included in the above table: Analyst/Research, Commercial Banking, Communications/Public Relations, Corporate Development, Customer Relations, E-Commerce/Internet/Website Management, Entrepreneurship, Fundraising/Development, General Real Estate, Human Resources, Market Research, Merchandising/Retail, Other Management, Other Marketing, Private Client Services/Wealth Management, Product Development, Real Estate Development/Construction, Real Estate Finance, Restructure/Turnaround, Retail Management, Supply Chain/Logistics, Technology Business Analysis and Design, Treasury.

CLASS OF 2013

MAJOR EMPLOYERS

FIRMS HIRING THREE OR MORE STUDENTS

McKinsey & Company	46	General Mills	7	The Chartis Group	4	Danaher Corporation	3
Bain & Company	38	Booz & Company	6	Citi	4	Davita, Inc.	3
The Boston Consulting Group	34	Kraft Foods Group	6	DISH Network	4	Evercore Partners	3
Deloitte Consulting LLP	34	L.E.K. Consulting	6	J.P. Morgan	4	Nike, Inc.	3
Accenture	13	ExxonMobil	5	PepsiCo, Inc.	4	Samsung Global Strategy Group	3
Microsoft Corporation	10	Goldman, Sachs & Co.	5	Target Corporation	4	Schneider Electric	3
Amazon	9	PwC	5	The Cambridge Group	3	Sears Holdings Corporation	3
A.T. Kearney	8	Apple, Inc.	4	Cerner Corporation	3	Unilever	3
Cisco Systems	8	Bank of America Merrill Lynch	4	The Coca-Cola Company	3		
						Total	305



SOURCES OF ACCEPTED

FULL-TIME JOB OFFERS

All graduates who reported their employing company are included in this listing.

*Includes: Alumni referral, employer informational meeting/dinner, faculty referral, off-campus interview (CMC facilitated).

**Includes: Career forum, conferences, family-owned business, off-campus interview (non-CMC), search firm/employment agency.

SIGN-ON BONUS ACCEPTANCES

BY INDUSTRY

	ACCEPTANCES (%)*	RANGE (\$)	AVERAGE (\$)	MEDIAN (\$)
Consulting	43	5,000–50,000	27,602	25,000
Consumer Packaged Goods	12	5,000–45,000	21,563	20,000
Investment Banking, Brokerage & Securities	8	10,000–60,000	43,000	45,000
Other Financial Services, Private Equity & Venture Capital	6	5,000–55,000	23,977	20,000
Other Manufacturing	6	10,000–30,000	17,615	20,000
Other Services	7	4,000–30,000	15,170	15,000
Pharmaceutical, Biotechnology, Healthcare	5	7,500–50,000	22,194	20,000
Technology Manufacturing & Services	13	2,000–65,000	21,621	20,000

BY FUNCTION

	ACCEPTANCES (%)*	RANGE (\$)	AVERAGE (\$)	MEDIAN (\$)
Business Development	2	15,000–50,000	24,156	20,000
Consulting	42	5,000–50,000	27,512	25,000
Finance	14	4,000–60,000	32,530	40,000
Management	13	2,000–57,500	20,316	20,000
Marketing	19	5,000–65,000	21,232	20,000
Other	5	5,800–40,000	17,989	15,000
Strategic Planning	5	7,500–45,000	23,281	22,500

Based on 87.3% of job accepting graduates who provided usable salary information.

* Percentages have been rounded to the nearest whole number.

† Less than 1 percent of accepted sign-on bonuses.

CORPORATE RECRUITING PARTNERS

The following organizations recruited students from the Kellogg School of Management during fiscal year 2012-2013.

<ul style="list-style-type: none"> 21st Century Oncology 3M — Strategic Business Development 500 Startups 7-Eleven, Inc. AAEF Abbott AbbVie Accenture access mobile Accord Group Holdings LLC Ace Metrix Acumen Fund Adobe Systems Aetna Inc. Agamy Capital LLC Albright Stonebridge Group Alcoa, Inc. Altman Vilandrie & Company Alvarez & Marsal Alyeska Investment Group Amazon AMD Ventures American Airlines, Inc. American Express Amgen Inc. Amphenol Alden Products Amphenol Corporation Analysis Group, Inc. Angie's List, Inc. Anheuser-Busch InBev Aon Corporation Apple, Inc. AppNexus 	<ul style="list-style-type: none"> Ardent Capital Ares Management LLC Arezzo & Co. The Armoury Group Asian Development Bank Assisted Living Concepts AT&T A.T. Kearney AuraSense Therapeutics Bain & Company Baker Botts Banco Itaú S/A Bank of America Bank of America Merrill Lynch Barclays Capital Baring Private Equity Asia Baxter Healthcare BD — Becton, Dickinson and Company Beam Inc. Bechtel Enterprises Belcorp Bertelsmann Best Coast Wines Biogen Idec BioMarin BizCorps B Lab Blue Canyon Partners BMO Capital Markets The Boeing Company Booz & Company Bose Corporation The Boston Consulting Group 	<ul style="list-style-type: none"> Bratus Capital Brave Warrior Advisors Bridger Capital LLC The Bridgespan Group Brightstar Corp. British Telecommunications Brown-Forman Corporation BTG Pactual/Celfin Caesars Entertainment Calamos Investments Cambridge Associates The Cambridge Group Cambridge Leadership Associates (CLA) Campbell Alliance Campbell Soup Company Capgemini Consulting CapitalSpring Cargill Catholic Health Initiatives CCS Cerner Corporation The Chamberlain Group, Inc. The Chartis Group Cheil Worldwide Chevron Chicago Cubs Chicago Fire Soccer Club Chrysler Group LLC Cicero Group CIGNA CIM Group, LP. Cisco Systems Citadel 	<ul style="list-style-type: none"> Citi Citrus Pay Civic Consulting Alliance Classified Ventures, LLC — Cars.com ClearSky Power & Technology Fund Cleary Gottlieb Steen & Hamilton Cleveland Indians Baseball Club The Clifton Group The Clorox Company Cobalt Transport Services, Inc. The Coca-Cola Company Colgate-Palmolive Company Commit! Compass Group Management ConAgra Foods, Inc. Consumers Energy Context Network Continuum Conversion Partners Cooper Industries CORPBANCA Corporación Lindley / Coca-Cola Bottling Coyote Logistics Creation Investments Capital Management, LCC Credit Suisse Crescent Capital Group LP Cummins Inc. CustomMade CVS/Caremark Cyrela 	<ul style="list-style-type: none"> Daiwa Securities Group Inc. Dalberg Global Development Advisors Danaher Corporation Darden Restaurants, Inc. David Yurman Davita, Inc. Deere & Company — John Deere Dell Inc. Del Monte Foods Deloitte Consulting LLP Delta Institute Delta Partners Group Development Bank of Japan Inc. Diageo plc Dimensional Fund Advisors DIRECTV Discover Financial Services DISH Network DISQUS Dover Corporation The Dow Chemical Company Dow Corning Corporation Dreamit Ventures D-Rev: Design Revolution DTE Energy Duff & Phelps DuPont E & J Gallo Winery
---------------------------------------------------------------------------------------------------------------------------------------------------------------------------------------------------------------------------------------------------------------------------------------------------------------------------------------------------------------------------------------------------------------------------------------------------------------------------------------------------------------------------------------------------------------------------------------------------------------------------------------------------------------------------------------------------------------------------------------------------------------------------------------------------------------------------------------------------------------------------------------------------------------------------	------------------------------------------------------------------------------------------------------------------------------------------------------------------------------------------------------------------------------------------------------------------------------------------------------------------------------------------------------------------------------------------------------------------------------------------------------------------------------------------------------------------------------------------------------------------------------------------------------------------------------------------------------------------------------------------------------------------------------------------------------------------------------------------------------------------------------------------------------------------------------------------------------------------------------------------------------	--------------------------------------------------------------------------------------------------------------------------------------------------------------------------------------------------------------------------------------------------------------------------------------------------------------------------------------------------------------------------------------------------------------------------------------------------------------------------------------------------------------------------------------------------------------------------------------------------------------------------------------------------------------------------------------------------------------------------------------------------------------------------------------------------------------------------------------------------------------------------------------------------------------------------------------------------------------------------------	--------------------------------------------------------------------------------------------------------------------------------------------------------------------------------------------------------------------------------------------------------------------------------------------------------------------------------------------------------------------------------------------------------------------------------------------------------------------------------------------------------------------------------------------------------------------------------------------------------------------------------------------------------------------------------------------------------------------------------------------------------------------------------------------------------------------------------------------------------------------------------------------------------------------------------------------------------------------------------	-------------------------------------------------------------------------------------------------------------------------------------------------------------------------------------------------------------------------------------------------------------------------------------------------------------------------------------------------------------------------------------------------------------------------------------------------------------------------------------------------------------------------------------------------------------------------------------------------------------------------------------------------------------------------------------------------------------------------------------------------------------------------------------------------------------------------------------------------------------------------

Recruited on campus for:

★ Full-time employees

☞ Summer interns

☐ Both full-time employees and summer interns

Eastdil Secured	General Motors	(Asia) Pte. Ltd.	LAN Airlines	Microsoft Corporation
▣ Eaton Corporation	General Motors Treasurer's Office	IMS Consulting Group	▣ Land O'Lakes, Inc.	☞ MillerCoors
★ eBay, Inc.	Genzyme, a Sanofi company	★ INDITEX	Latam Capital Advisors	Minimal Design
▣ ECOLAB Inc.	GlaxoSmithKline	Indu Projects Limited	Latham and Watkins	Mitsubishi Corporation
Education Pioneers	☞ Goldman, Sachs & Co.	★ Infosys, Limited	★ Laureate Education, Inc.	Mizuho Corporate Bank, Ltd.
Element Bars — Element Endurance	Goodwin Procter, LLP	▣ ING DIRECT	Lazard Frères & Co. LLC	Moët Hennessy USA
▣ Eli Lilly and Company	Google	Insight Equity	★ Lazard Middle Market LLC	▣ Mondelez International, Inc.
▣ Emerson Electric Company	Gotham Consulting Partners	Integradora de Servicios Petroleros Oro Negro	Lebua Hotels & Resorts	Monitor Deloitte
★ Empresas CMPC	Goudy Park Capital	▣ Intel Corporation	L.E.K. Consulting	★ Monitor Group
Endeavor Global	Grassroot Soccer	Interbank	★ Level 3 Communications	Monroe Capital
Enfoca	gravitytank	▣ International Business Machines Corporation (IBM)	▣ Liberty Mutual Insurance Company	Moore & Warner Farm Management
Enphase Energy, Inc.	Great Hill Partners	★ International Finance Corporation	▣ Lincoln International LLC	☞ Morgan Stanley
▣ Ernst & Young	☞ Groupon Inc.	Interproperties	LinkedIn	Mosaic
▣ Evercore Partners	The Growth Hub	Intuit	Lojas Americanas	Motorola Mobility, Inc.
Everstring	Grupo ABX	☞ Intuitive Surgical	Macquarie Capital	Motorola Solutions
Expedia, Inc.	Grupo Santander	Invenergy LLC	Macquarie Group	Narrative Science
Experian	GTCR Golder Rauner LLC	Itaú Unibanco	Macy's, Inc.	Nations Photo Lab
Export-Import Bank of Korea	Gulf Capital	☞ Jefferies & Company, Inc.	★ M&T Bank Corporation	★ Navigant Consulting, Inc.
▣ ExxonMobil	Halliburton	▣ Johnson & Johnson	★ Marakon	Navis Investment Partners (Asia) Limited
☞ Facebook	Handybook	Johnson Controls Inc.	▣ Mars, Incorporated	Nestlé USA
Farmers Insurance Group	Hanwha Chemical	Jones Lang LaSalle, Inc.	Martin Investment Management, LLC	☞ Nike, Inc.
FBR Capital Markets	Hanwha Life Insurance	☞ J.P. Morgan	★ Masco Corporation	★ Nissan North America, Inc.
★ Federal Bureau of Investigation	The Hartford Financial Services Group	JPMorgan Chase	Match.com	☞ Nordstrom Inc.
Fenwick & West	Heirlume	Kaiser Permanente	☞ Mattel, Inc.	Northern Light Venture Capital
▣ Fidelity Business Consulting	▣ The Hershey Company	Kellogg Center for Research in Technology & Innovation (CRTI)	MBA Manufacturing	Northwestern Memorial Hospital
First Capital Partners	Hewlett-Packard	Kellogg School of Management	McDermott Will & Emery LLP	★ Northwestern Mutual Capital
★ FMC Technologies	☞ Hillshire Brands Company	▣ The Keystone Group	McDonald's Corporation	Northwestern University Innovation and New Venture Office
▣ Ford Motor Company	★ Hines	▣ Kimberly-Clark Corporation	McKesson Corporation	Novartis Pharmaceuticals
Freedom	H.J. Heinz Company	Kinea	McKinsey & Company	★ Oliver Wyman
Frontier Communications	▣ Houlihan Lokey	Kirkland & Ellis LLP	McNally Capital	OMERS Private Equity
Front Row Education	HSBC North America	☞ Kohl's	Medline Industries, Inc.	
Furie Petroleum	Hudson Advisors	Konga Online Shopping Ltd	★ Medtronic, Inc.	
Gap Inc.	Hypermarcas S.A.	▣ Kraft Foods Group	★ Mercer	
GE Capital	IBM Global Business Services	Krung Thai Bank	☞ Merck	
▣ Genentech, Inc.	IDEO, Inc.	KVH Co. Ltd	▣ MetLife, Inc.	
▣ General Electric	Imagine Easy Solutions		MGM Resorts International	
▣ General Mills	Impact Investment Exchange		★ MHT Partners	

Recruited on campus for:

★ Full-time employees

☞ Summer interns

▣ Both full-time employees and summer interns

OMERS Ventures
 ★ Omnicom Group, Inc.
 Oppa
 Oppenheimer Funds, Inc.
 Orbitz Worldwide
 ☞ Ovative/Group
 ☞ Pacific Alternative Asset Management Company
 Pacific Eagle Asset Management
 Pacific Life
 Page Vault
 Paramount Pictures
 ☞ The Parthenon Group
 PayPal Inc.
 Pearson Education
 ☐ PepsiCo, Inc.
 Pfizer, Inc.
 Philips Healthcare
 PIMCO
 Pine Tree Equity Partners
 ☞ Piper Jaffray & Co.
 ☐ Point B, Inc.
 ★ Praxis Management International, LLC
 Principia Management Group
 ☐ Procter & Gamble
 Project Frog
 Prolec GE
 ☐ Prophet
 Prospect Hill Group
 Prospect Partners, LLC
 Providence Equity Partners
 ★ Prudential Financial
 ☐ PwC
 Qualcomm Ventures
 Qualtrics
 QuinStreet, Inc.
 Raymond James Financial, Inc.

Reckitt Benckiser
 Related Companies
 Relay Health
 Results for Development
 Revelry Brands
 Reyes Holdings, LLC
 Riot Games
 The Riverside Company
 Riverwood Capital
 ☐ Robert W. Baird & Co. Incorporated
 ☐ Roland Berger Strategy Consultants
 Rouse Asset Services
 ★ Royal Caribbean Cruises Ltd.
 Sage Clarity
 Samsung Card
 Samsung Global Strategy Group
 ☞ Samsung Telecommunications America
 Sandbox Industries, LLC
 ☐ Schlumberger Business Consulting
 ★ Schneider Electric
 ☞ SC Johnson
 ☐ Sears Holdings Corporation
 Sephora
 Shasta Ventures
 Shell Oil Company
 Shipston Group LTD
 Shree Paramhans Processing Works Pvt. Ltd.
 Sibson Consulting
 ☐ Siemens Management Consulting
 Silver Spring Networks
 Simmons & Company International
 ★ Simon-Kucher and Partners

Simpson Thacher & Bartlett LLP
 SK Group
 Skyline Global Partners
 Sony Electronics Inc.
 Sony Network Entertainment International
 Sony Pictures Entertainment
 Sound Physicians
 ☐ Sprint
 Standish Mellon Asset Management, LLC
 ☞ Starbucks Coffee Company
 ☞ Starwood Hotels & Resorts Worldwide Inc.
 ★ Stax, Inc.
 Sterling Partners
 Sterling Ventures
 Storm8
 ★ Surgical Care Affiliates
 SVI Public Company
 Swellbox
 ★ Symantec Corporation
 SYPartners
 Taco Bell
 ☞ Takeda Pharmaceuticals USA, Inc.
 Taleris (GE/Accenture JV)
 ☐ Target Corporation
 Tarpon Investimentos S/A
 ☞ Tata Consultancy Services
 Teach for America
 TechnoServe
 Terlato Wine International
 TerraCycle
 Tokyo Gas Co., Ltd.
 Toyota Motor Sales USA, Inc.
 TPG Capital
 Trammell Crow Company

Tresalia Capital
 TriBridge Residential
 TripAdvisor
 Tuthill Corporation
 ☞ UBS Investment Bank
 UBS Securities Japan
 UNICEF Innovation
 ☐ Unilever
 ★ United Airlines
 ★ UnitedHealth Group
 ★ URS
 U.S. Department of the Treasury
 Van Eck Global Investors
 Vanguard
 Varsity Healthcare Partners
 Vino Volo
 Virtus Partners
 ☞ VISA Inc.
 VIVO Ventures
 VMware
 VNT Industry Company Limited
 Vosges Haut-Chocolat
 ☞ Walgreens
 ☞ Walmart, Inc.
 The Walt Disney Company
 ★ Waterstone Management Group LLC
 Waud Capital Partners
 WellPoint, Inc.
 ★ Wells Fargo & Company
 ☐ William Blair and Company, L.L.C.
 ★ Wilshire Media Group
 Wind Point Partners
 ☐ The Wine Group
 Wm. Wrigley Jr. Company
 Wolverine Worldwide Inc.

World Bank Group — International Bank for Reconstruction and Development
 Yieldex Inc.
 Zillow.com
 ★ Zimmer, Inc.
 ☐ ZS Associates

Recruited on campus for:
 ★ Full-time employees
 ☞ Summer interns
 ☐ Both full-time employees and summer interns

JOB ACCEPTANCES BY ORGANIZATION

This listing includes all graduates who reported their employing company. In some cases, graduates may have chosen not to include their names. We have included the total number of graduates hired by each organization in parentheses after the organization name

3M (1)

Koh, Nigel Chong Hoe

A

ABBOTT (1)

ABBVIE (1)

Sanderson Schrems, Kelly Jo

ACCENTURE (13)

Burnett, Leslie Hardin
DePalma, Michael Paul
Gaur, Vikas
Gordon, Graham Charles
Hart, Elizabeth
Kemper, Jason Myles
Mills, Casey Austin
Perez-Hobrecker, Gabriela
Poddar, Varun
Reynolds, Hannah
Sommer, Gil Zvi

ACCORD GROUP HOLDINGS LLC (1)

McKinney, Malachi Eric

ACUMEN FUND (1)

Collery, John

ADOBE SYSTEMS (2)

Jenks, Catherine Jameson

Lyell, Jennifer Marie

ALBRIGHT STONEBRIDGE GROUP (1)

Mayekar, Samir

ALCOA, INC. (1)

ALVAREZ & MARSAL (2)

Nelson, Kyle Nels

AMAZON (9)

Ali, Tahsin
Bhatnagar, Nilay
Naim, Fahim
Saranow, David Martin
Singh, Abhishek Kumar
Thowatana, Pintira
Vadakkanmarveetil, Jayadev

AMD VENTURES (1)

Ebrahim, Tabrez Yusuf

AMERICAN AIRLINES, INC. (2)

Malinowski, Daniel Patrick
Xie, Jihui

AMERICAN EXPRESS (1)

Ng, Serena

ANHEUSER-BUSCH INBEV (1)

Zwiener, Carolyn Jean

AON CONSULTING (1)

McLachlan, Michael Charles

APPLE, INC. (4)

Oliver, Carson Alexander
Carmichael
Salam, Remi
Tan, Jingfei
Yang, Annie

APPNEXUS (1)

Tellis, Viren

ARES MANAGEMENT LLC (1)

Goel, Anup

THE ARMOURY GROUP (1)

Son, Kan Ho

ASSISTED LIVING CONCEPTS (1)

Kerns, Kristen

A.T. KEARNEY (8)

Calahorra Jimenez, Rafael
de Barros Barreto, Guilherme
Faria de Oliveira Filho, Fabio
Koh, Geok Hui
Lima de Almeida, Joao Caetano
Moiz, Shehzad
Ortigosa Agudo, Ricardo
Premkumar, Jayant

B

BAIN & COMPANY (38)

Ahluwalia, Arjun
Ali, Afsheen Aziz
Amu, Chudi
Blazevich, Rex Blake
Bronson, Daniel David
Bushy, Mackenzie Catherine
Chan, Chung Yan
Dip, Daniel
Duncan, Jamie Marcus
Goel, Gaurav
Grey, Amanda Kathryn
Han, James Junewoo
Iyer, Prashant
Johnson, Katherine Case
Khandelwal, Sushant
Kinn, Carlyn Kener
Langsen, Matthew Kirwan
LeMay, Gregory Charles
Meehan, John Patrick
Olenak, Matthew Thomas
Pan, Jiuzhu
Poindexter, Elliot Jason
Rodriguez Sada, Marcelo de Jesus
Rossen, Stuart Graham
Schuster, Joseph
Shah, Nisha
Singhal, Shobhit
Smyth, Alexander David
Sparling, Elena Marie Roe

Tarlecki, Derek Scott
Ujereh, Sebastine Onyema-Echi
Valentine, David Aldon
Walker, Jordan Christina
Wallace, Michael Thompson

BANK OF AMERICA (1)

Tacha, Nathan Grethen

BANK OF AMERICA MERRILL LYNCH (4)

Goel, Akshat
Krule, Edward
Washington, Shelby Lauren

BARCLAYS CAPITAL (2)

Das, Ananya

BAXTER HEALTHCARE (2)

Barrett, Lydia Renata
Candler, Samuel

BD — BECTON, DICKINSON AND COMPANY (2)

Chatterjee, Aniruddha

BEAM INC. (1)

Lindsay, Tanya Marie

BECHTEL ENTERPRISES (1)

Haygood, Corey James

BELCORP (1)

Vojvodic Perez, Piero Adan

BERTELSMANN (1)

Rosenbaum, Christopher

BEST COAST WINES (1)

Sainati, Nicholas Rogers

BIZCORPS (1)

John, Asuquo Tommy

BLUE CANYON PARTNERS (1)

Terese, Adam Nicholas

BMO CAPITAL MARKETS (1)

Butcher, Corbin Shusta

BOOZ & COMPANY (6)

Bronston, William Jacob

Mani, Rakesh

Margain Gonzalez, Roberto Xavier

Pensky, Yury

Vishwanath, Nina

Walter, David Alan

THE BOSTON CONSULTING GROUP (34)

Barkley, Amber Nicole

Beattie, Andrew

Gatto, Jeanne Marie

Gulati, Aakanksha

Harris, Mark J

Hayward, Sara Catherine

Jatukanyaprateep, Ploy

Kambic, Matthew Dominic

Karkowski-Schelar, Robin Nicole

Keiserman, Bruna

Kinn, Matthew James

Martinez, Martin Josel

Mathewson, Sean David

Meyer, Travis Orin

Moschner, Matthew Frank

Nieto Filho, Regis

Rand, Itay

Sacchetti, Benjamin Michael

Saunders, Dominic

Sheth, Rushi Rajesh

Tang, Shenqing

Toh, Hung Yi

Wheatley, Kristin Elizabeth

Wu, Quansheng

Zhang, Susan Yunshi

Zhong, Ran

BRATUS CAPITAL (1)**BRAVE WARRIOR ADVISORS (1)**

Monson, Matthew Blake

BRIDGER CAPITAL LLC (1)

Parana Barbosa Lemes, Paulo

Henrique

THE BRIDGESPAN GROUP (1)

Sweat, Earnest Lee

BRIGHTSTAR CORP. (1)

Segal Wenker, Robert Amos

BTG PACTUAL/CELFIN (1)**C****CAESARS ENTERTAINMENT (1)****CALAMOS INVESTMENTS (1)**

Jiang, Kelvin

THE CAMBRIDGE GROUP (3)

Perkins, Jessica Leigh

Strine, Steven

Wang, Christine Ellen

CAMPBELL SOUP COMPANY (1)

Williams, Ryan C

CAPGEMINI CONSULTING (2)

Meuschke, Timothy Brennan

CAPITALSPRING (1)

Stern, Michael Scott

CARGILL (2)

Sethi, Ankit

CCS (1)

Steinberg, Briel Lauren

CERNER CORPORATION (3)

Griffin, Marc Carlton

Smith, Kevin Klees

Speller, Junelle Patien

THE CHAMBERLAIN GROUP, INC. (1)**THE CHARTIS GROUP (4)**

Frankel, Eviatar

Frantz, Robert William

Shah, Saurabh

CHEIL WORLDWIDE (1)

Ryu, Heejoon

CHICAGO FIRE SOCCER CLUB (1)

Kim, Jenny Hyomin

CICERO GROUP (1)

Neuner, Scott James

CIM GROUP, LP. (2)

Faron, Douglas James

Lin, Edward

CISCO SYSTEMS (8)

De Saboia, Henrique Elias

Jas, Aparajita

Lu, Yesu

Nguyen, Bao Nguyen

Park, Ji Hoon

Poturnak, Nikolay

CITI (4)

Kim, Jae Won

Mathur, Rachit

Ratti, Giancarlo

Srisuksawadi, Yotsakorn

CLEVELAND INDIANS BASEBALL CLUB (1)

Schmidt, Nicole Anne

THE CLIFTON GROUP (1)

Persuitti, Justin Thomas

THE CLOROX COMPANY (1)

Arifin, Humaira

COBALT TRANSPORT SERVICES, INC. (1)**THE COCA-COLA COMPANY (3)**

Cheung, Amanda Ga-Yee

Dixit, Rohit

Giordano, Jenna Marie

COMMIT! (1)

Desai, Sagar Pankaj

COMPASS GROUP MANAGEMENT (1)

Sawtelle, Zachary Taylor

CONAGRA FOODS, INC. (2)

Rindels, Talon Fern

Spade, Ashley Elizabeth

CONTEXT NETWORK (1)

Creagh, Daniel Halsey

CONTINUUM (1)

Bee, Sydney

CONVERSION PARTNERS (1)

Coelho, Angelo Jose

CORPBANCA (1)**CORPORACIÓN LINDLEY / COCA-COLA BOTTLING (1)**

Gomez Milla, Erik Luis

CREATION INVESTMENTS CAPITAL MANAGEMENT, LCC (1)

Code, Adam Joseph

CREDIT SUISSE (1)

Dammrich, Matthew Thomas

CRESCENT CAPITAL GROUP LP (1)

Olofson, Hayes Shaw

CUMMINS INC. (1)

Zhang, Yu

D

DAIWA SECURITIES GROUP INC. (2)

Fujita, Muneyoshi
Kiuchi, Nobutaka

DANAHER CORPORATION (3)

Braden, Brooks Darby
Younus, Danish Mohammed
Zamora Palacios, Sergio Alejandro

DARDEN RESTAURANTS, INC. (1)

Felton, John Leslie

DAVID YURMAN (1)

Wolfe, Daniel

DAVITA, INC. (3)

Sequeira, Priya Ann
Westcott, Spencer Ely

DEERE & COMPANY (1)

Silva, Brad Anthony

DELL INC. (1)

Bodicherla, Kartik Prakash

DEL MONTE FOODS (2)

Coy, Elizabeth Strother
Khuu, Theresa Heather

DELOITTE CONSULTING LLP (34)

Antani, Isha
Balbale, Rashaad Sami
Bhagavatula, Sai Krishna Kumar
Brooks, Traci Nicole
Drake, Adam Dale
Garfinkel, Amanda Clair
Gendler, Alexandra

Golden, Matthew William
Gunturu, Phanindra
Hanna, Jaymes Francis
Hess, Benjamin
Hoyle, Caroline Teresa
Kotowsky, Mathew Paul
Kuvich, Inna
Lothrop, Amanda Marie Bennett
Mercep, Eric John
Nehru, Vishal
Noodleman, Justin
Osinubi, Oluwafemi Michael
Roach, Michael Vincent
Santoso, Katherine
Schonfeld, Daniel Reuben
Semere, Solomon
Semmer, Kathryn Holton
Sender, Juliana Wesley
Shen, SiSi
Shree, Kanu
Sood, Supriya
Spitulnik, Alyssa Lynn
Sullivan, Emily Jo Roesner
Wong, Art

DELTA INSTITUTE (1)

To, Tsz Chung

DELTA PARTNERS GROUP (2)

Romero Ramirez, Mauricio

DEVELOPMENT BANK OF JAPAN INC. (2)

Ikeno, Ken
Kuroda, Kotaro

DIAGEO PLC (1)

Shome, Ratula Milly

DIRECTV (1)

Aksoy, Sezin

DISCOVER FINANCIAL SERVICES (1)

Endres, Jacqueline Anne

DISH NETWORK (4)

Bishnoi, Ankit
Dave, Sunil
Kim, Jee Yun
Pomeroy, Mark Warren

DISQUS (1)

Wong, Ernest

DUFF & PHELPS (1)

Sieglen, Michael Benjamin

E

E & J GALLO WINERY (1)

EASTDIL SECURED (1)

EATON CORPORATION (2)

Duffett, Katheron Charee
van der Vaart, Hendrik Hubertus

EMERSON ELECTRIC COMPANY (2)

Weil, Matthew

EMPRESAS CMPC (1)

Rodriguez Lopez, Emilio

ENFOCA (1)

Rodrigo, Jorge-Luis Fernando

ERNST & YOUNG (2)

Gebisa, Lello
Vella, Christopher Andre

EVERCORE PARTNERS (3)

Eisenberg, Aaron
Tobias, Michael
Venugopal, Bharat

EXPEDIA, INC. (1)

Finkel, Daniel Jacob

EXPERIAN (1)

Tanno, Andre Mamoru

EXPORT-IMPORT BANK OF KOREA (1)

Park, Daekyoo

EXXONMOBIL (5)

Foster, Taft Michael
Johnston, Jordan Chad
Ng, Adrian Hoyin
Zakarian, John Crossy

F

FARMERS INSURANCE GROUP (1)

Snoddy, Crystal M

FBR CAPITAL MARKETS (1)

Dugan, Jeffrey Stephen

FREEDOM (1)

Lashkari, Dheer Vijay

FRONTIER COMMUNICATIONS (1)

Parikh, Arpit

FURIE PETROLEUM (1)

Chenault, William Iley

G

GAP INC. (2)

Gallien, Laurie Beth
Yam, Michelle

GE CAPITAL (1)

GENENTECH, INC. (1)

Fernandez, Daniel Higinio

GENERAL ELECTRIC (1)

Agbesi, Kwaku

GENERAL MILLS (7)

Bortinger, Michael David
Day, Jeffrey
Frantz, Collin Godard
Miller, Stefan Lawrence
Timm, Aubrey Tera
Wagner, Andrew James
Yu, Shana

GENERAL MOTORS (1)

Early, Mitchell Arnold

GENERAL MOTORS TREASURER'S OFFICE (1)

Liu, Yangxian

GLAXOSMITHKLINE (1)

Martinez, Joaquin

GOLDMAN, SACHS & CO. (5)

Browne, Elizabeth Allcorn
Byczek, Alison Elizabeth

Marcus, Gabriel
Miller, Brett
Zhu, Lingbo

GOODWIN PROCTER, LLP (1)

GOOGLE (2)
Kletzl, Christian
Phillips, Matthew Ryan K

GORTON'S (1)
Holbrook, Jake

GOTHAM CONSULTING PARTNERS (1)

GOUDY PARK CAPITAL (1)
Liao, Roy Joel

GRAVITYTANK (1)
Marcus, Leah Robin

GREAT HILL PARTNERS (1)
Byrnes, Craig Kenneth

GROUPON INC. (1)
Uyeshiro, Lauren Lan Ko

GRUPO ABX (1)
Hauser Garcia, Alejandro David

GRUPO SANTANDER (1)
Sanchez-Rey Rambla, Juan Agustin

GTCR GOLDER RAUNER LLC (1)

GULF CAPITAL (1)
Isaac, Paul

H

HANWHA LIFE INSURANCE (1)

Yang, Seok Chin

THE HERSHEY COMPANY (2)

Criezis, Anthony William
Minderman, Amy B

HEWLETT-PACKARD (1)

Hong, Timothy Junggih

HILLSHIRE BRANDS COMPANY (1)

Thomas, Kathleen Elizabeth

HINES (1)

Engleman, Benjamin Smith

H.J. HEINZ COMPANY (1)

Gibson, Ashleigh

HSBC NORTH AMERICA (1)

Khandelwal, Rahul

HYPERMARCAS S.A. (1)

I

IBM (2)

Lee, Justin H
Perez, Paul Anthony

IDEO, INC. (1)

Dhillon, Tejpal Singh

IMAGINE EASY SOLUTIONS (1)

Kalita, Rahul M

IMS CONSULTING GROUP (1)

Pfister, Matthew Edward

INDU PROJECTS LIMITED (1)

Indukuri, Sidharth Reddy

INSIGHT EQUITY (1)

Dobbs, William Fisher

**INTEGRADORA DE SERVICIOS
PETROLEROS ORO NEGRO (1)**

INTEL CORPORATION (1)

Powe, Audrey N

INTERBANK (1)

Alegria Motte, Javier

INTERPROPERTIES (1)

Ikeda Campos, Ricardo Nobuo

INTUIT (2)

Chang, Eric Chibong
Sethia, Tarang S

INVENERGY LLC (1)

Palmer, Marc

J

JOHNSON & JOHNSON (2)

Esguerra, Allison Anree
Utts, Kathryn Lindy

JONES LANG LASALLE, INC. (1)

Haynes, Deana Alexandra

J.P. MORGAN (4)

Lamba, Digvijay
Sidana, Gajendra
Thorne, Robert Tyler

JPMORGAN CHASE (2)

Charbonneau, Kristine
Lee, Yuan Chung

K

KAISER PERMANENTE (1)

Janczyk, Paul Anthony

**KELLOGG SCHOOL OF
MANAGEMENT (1)**

Alcaino Lamarca, Alfredo

KIRKLAND & ELLIS LLP (2)

KRAFT FOODS GROUP (6)

Cerato, Kimberly Marie
Guerten, Nicholas Paul
Madden, Nicholas
Valenti, Kate Elizabeth
Wyrwicz, Allison M

KRUNG THAI BANK (1)

KVH CO. LTD (1)

L

LAN AIRLINES (1)

Griffith Semsch, Pamela Dee

LAZARD FRÈRES & CO. LLC (1)

Lukehart, Laura Marilyn

L.E.K. CONSULTING (6)

Huang, Anna Julia
O'Neil, Timothy
Swieboda, Jakub
Trakhtenberg, Ilya
Wong, Austin

LIBERTY MUTUAL (1)

Ngo, Charles Quang

LINCOLN INTERNATIONAL LLC (1)

Molinaro, Scott Allan

LINKEDIN (1)

Abou-Said, Zeina Leslie

LOJAS AMERICANAS (1)

Montes Zegers, Juan Luis

M

MACQUARIE CAPITAL (2)

Feeney, Patrick James
Rakyan, Saahil Kumar

MACQUARIE GROUP (1)

Yang, Suo

MACY'S, INC. (1)

Glassman, Bennett Jacob

MARAKON (1)

Grzywacz, Christopher George

MASCO CORPORATION (1)

Clay, Kenneth Harvey

MATCH.COM (1)**MATTEL, INC. (1)**

Froeb, Aislinn Boyer

MBA MANUFACTURING (1)

Itterman, Brett Thomas

MCKESSON CORPORATION (1)

Iyer, Simrata

MCKINSEY & COMPANY (46)

Arni, Sudhir

Bandi, Ravi Tej

Bauer, Florian Josef

Bernard, Christopher Whitten

Biederman, Michael Robert

Broeker, Thomas Jamison

Chang, Carrol Jung

Doverspike, Daniel Leon

Dychter Shenberg, Samuel

Goel, Abhinav

Greene, Michael Frederick

Hopson, Adam Drew

Hu, Qinyu

Ivory, Julia Mary

Jhalani, Jitendra

Johnson, Rebecca Margaret

Jokel, Nathan Andrew

Klempner, Jesse Maxwell

Klippenstein, David Tomoji

Kovalevich, Nicholas

Laures, Christopher

Lee, Jung In

Mellors, Nicholas Michael

Mesa Molina, Rebeca

Mowery, Aaron Joseph

Opsomer, Rob Joris Dirk

Poturnak, Tatyana

Riederer, Guilherme

Roux, Rebecca Parsons

Sakurai, Yasuaki

Sawhney, Rahul

Schneider, Edward

Shum, Richard

Skinner, Valerie Rachael

Thakur, Saurav

Thomas, Tarra Elysse

Travis, Thomas Wesley

Wu, Jiabin

Yoon, Tyler Jae

You, Yeongmin

Yu, Huiling

Zhang, Feng

MCNALLY CAPITAL (1)**MEDLINE INDUSTRIES, INC. (1)**

Cabrera, Erick Joshua

MEDTRONIC, INC. (1)

Jani, Shantanu

METLIFE, INC. (2)

Duvancic, Davor

Talgar, Selin

MGM RESORTS INTERNATIONAL (1)

Schroeder, Amanda Colleen

MICROSOFT CORPORATION (10)

Andrews, Ajay Chandy

Chan, Ting-Fang

Lynch, Greer Karlis

Mathias, Patrick Joel

Samal, Savyasachi

Teriakidis, Christos

MILLERCOORS (1)

Robberson, Sean Joseph

MITSUBISHI CORPORATION (1)

Takata, Kazuhiro

MIZUHO CORPORATE BANK, LTD. (1)

Maruyama, Kentaro

MONDELEZ INTERNATIONAL, INC. (2)

Burditt, Elise Carver

MONITOR DELOITTE (1)

Maduck, Joel Anthony

MONITOR GROUP (2)

Sherman, Barry Grant

MONROE CAPITAL (1)

Molzahn, Thomas Walter

MOORE & WARNER FARM MANAGEMENT (1)

Kolb, Jonah Allan

MORGAN STANLEY (2)

Schlock, Timothy Alan

Tan, Swee Cheng

N**NATIONS PHOTO LAB (1)****NESTLÉ USA (1)**

McLaughlin, Kerry Ann

NIKE, INC. (3)

He, Qin

NISSAN NORTH AMERICA, INC. (1)

Jairaj, Aditya

NORDSTROM INC. (1)

Berger, Gabrielle Marie

NORTHWESTERN MEMORIAL HOSPITAL (1)

McCarthy, Daniel Patrick

NORTHWESTERN MUTUAL CAPITAL (1)

Roberts, John Charles

O**OLIVER WYMAN (2)**

Lyden, Timothy

Ravindranath, Deepa

OMERS PRIVATE EQUITY (1)

Bunn, Ryan Robert

OMERS VENTURES (1)

Gupta, Megh

OMNICOM GROUP, INC. (1)

Char, Radhika Usha

ORBITZ WORLDWIDE (1)

Chookaszian, David Charles

P**PACIFIC EAGLE ASSET MANAGEMENT (1)**

Tantitham, Praeo

PACIFIC LIFE (1)

Newman, Andre

THE PARTHENON GROUP (1)

Shulga, Natalya

PAYPAL INC. (2)

Mehta, Devanshi

Shah, Amar Anil

PEPSICO, INC. (4)

Cabanas Suarez, Jorge Rodrigo

Cease, Elizabeth

Gambill, Emily Herzog

Khan, Sarah

PFIZER, INC. (1)

Kittel, Laura

PHILIPS HEALTHCARE (1)

Tuli, Sunaina

PIMCO (1)

Jin, Ronald

PINE TREE EQUITY PARTNERS (1)

Briedis, David Paul

PROCTER & GAMBLE (1)

Wang, Christina

PROJECT FROG (1)

So, Monique

PROLEC GE

Montemayor Cantu, Jorge Jose

PROPHET (1)

Schumeister, Stacey

PROSPECT HILL GROUP (1)

Pihl, Ian

PROSPECT PARTNERS, LLC (1)

Hunter, Heath Scott

PROVIDENCE EQUITY PARTNERS (1)

Rowland, Nicholas Edward

PWC (5)

Chirasani, Divya
Fritzsche, Allison Anne
Gupta, Archana
Takou Tuh, Jacques

Q**QUALTRICS (1)**

Maughan, Michael Hanks

QUINSTREET, INC. (1)

Ernis, Elodie Julie Caroline

R**RAYMOND JAMES FINANCIAL, INC. (1)**

Lynch, Brendan Patrick

RECKITT BENCKISER (1)

Chowdhury, Rahul

RELAY HEALTH (1)

Fujita, Lindsey

RESULTS FOR DEVELOPMENT (1)

Tyler, Nikki Lee

REYES HOLDINGS, LLC (1)**RIOT GAMES (1)**

Bonaparte, Ruthven Anderson

THE RIVERSIDE COMPANY (1)

Flanigan, Andrew Allen

RIVERWOOD CAPITAL (1)**ROBERT W. BAIRD & CO. INCORPORATED (2)**

Arras, Daniel Peter
Fiser, Jeremy Daniel

ROUSE ASSET SERVICES (1)

Rusch, Douglas

S**SAMSUNG GLOBAL STRATEGY GROUP (3)**

Alley, Kevin James
Buntornvorapun, Sirunya
Hadley, Patrick Russell

SCHLUMBERGER BUSINESS CONSULTING (1)**SCHNEIDER ELECTRIC (3)**

Singh, Dipeshwar
Yang, Lei
Yuan, Jim Wangji

SC JOHNSON (1)

Overbey, Susannah Christine

SEARS HOLDINGS CORPORATION (3)

Kwiatek, Marta Eliza

SEPHORA (1)

Lo, Teresa J

SHASTA VENTURES (1)

Chopra, Nitin

SHIPSTON GROUP LTD (1)

Tremain, Brett Allan

SHREE PARAMHANS PROCESSING WORKS PVT. LTD. (1)

Goel, Nripraj Rakesh

SILVER SPRING NETWORKS (1)

Peterson, Guy Edward

SK GROUP (1)

Kim, Soyeon

SONY ELECTRONICS INC. (1)

Pan, Beily

SONY PICTURES ENTERTAINMENT (1)

Farkas, Daniel Erez

SOUND PHYSICIANS (1)**SPRINT (1)**

Arivukkarasu, Anand

STANDISH MELLON ASSET MANAGEMENT, LLC (1)

Earle, Nathaniel Dallas

STARBUCKS COFFEE COMPANY (2)

Herod, Katherine Elizabeth
Rumsey, Erin Reed

STAX, INC. (1)

Schellpfeffer, Amelia Anne

STERLING PARTNERS (1)

Friedman, Joshua Sallen

STERLING VENTURES (1)

Harrington, Douglas

STORM8 (1)

Poon, John How Yin

SVI PUBLIC COMPANY (1)**SWELLBOX (1)**

Khomut, Boris

SYMANTEC CORPORATION (1)

Joseph, Joel Antony Xavier

SYPARTNERS (1)

Zhao, Christina Veronica

T**TARGET CORPORATION (4)**

Iles, Anne Schuler
Quinn, Jamie Donchess
Trotter, Nicole Gabrielle

TEACH FOR AMERICA (1)

Camargo, Marcela

TERLATO WINE INTERNATIONAL (1)

Johnson, Daniella

TOKYO GAS CO., LTD. (1)

Saito, Shu

TPG CAPITAL (2)

Kannukkaden, Sebbby Jos

TRAMMELL CROW COMPANY (1)

Bills, Casey

TRESALIA CAPITAL (1)

Bravo Bustamante, Francisco Javier

TRIPADVISOR (1)

Sung, Samuel

TUTHILL CORPORATION (1)

Tuthill, Andrew Butler

U**UNILEVER (3)**

Akey, Lisa Kristen
Isaacson, David
Reiman, Mitchell Stuart

UNITED AIRLINES (1)

Andrade, Saul

U.S. DEPARTMENT OF THE TREASURY (1)

Eng, Tiffany

V**VAN ECK GLOBAL INVESTORS (1)**

Smith, Colgate

VIRTUS PARTNERS (1)

Fantoni, Juan Francisco

VISA INC. (1)

Ribero, Michael Anthony

VIVO VENTURES (1)

**VNT INDUSTRY COMPANY
LIMITED (1)**

Rattanuengyot, Vimolmas

W

WALMART ECOMMERCE (1)

Garg, Karan

WALMART, INC. (1)

WAUD CAPITAL PARTNERS (1)

Lattner, Kyle Douglas

WELLPOINT, INC. (1)

Klufio, Melissa-Claire Naa Adzorkor

WELLS FARGO & COMPANY (1)

**WILLIAM BLAIR AND COMPANY,
L.L.C. (2)**

Meyer, Devin Lester

Rozylowicz, Paul Andrew

THE WINE GROUP (1)

WM. WRIGLEY JR. COMPANY (1)

Mesdag, Kira Ann

Y

YIELDEX INC. (1)

Nath, Sonali

Z

ZILLOW.COM (1)

Wang, Stephanie

ZS ASSOCIATES (1)

Moran, Sean Patrick

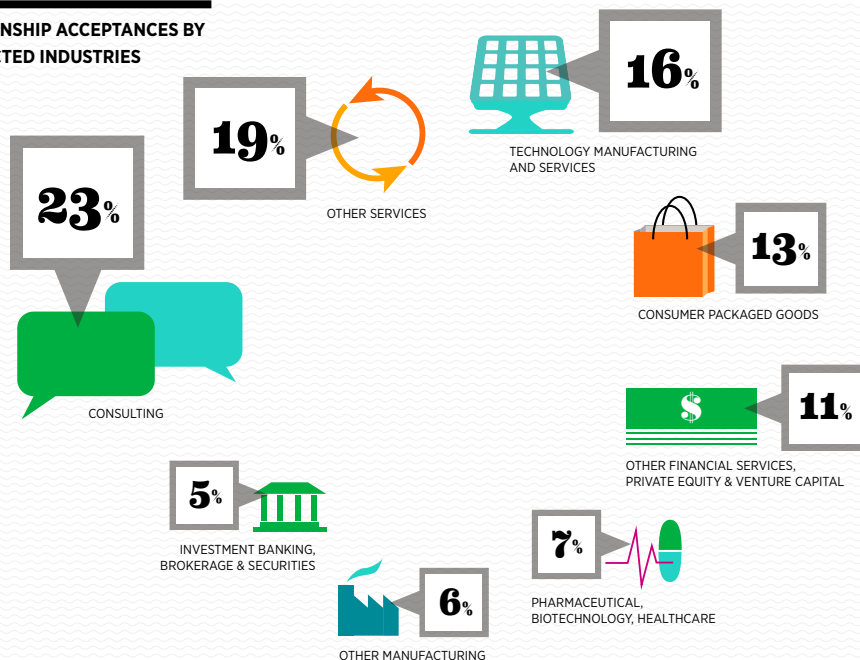
CLASS OF 2014 SUMMER INTERNSHIPS

MAJOR INDUSTRIES

CHOSEN BY SUMMER INTERNS, 2009–2013

INDUSTRY	ACCEPTANCES (%)*				
	2013	2012	2011	2010	2009
Consulting	23	25	25	21	15
Consumer Packaged Goods	13	13	14	12	14
Investment Banking, Brokerage & Securities	5	7	8	7	7
Other Financial Services, Private Equity & Venture Capital	11	14	10	13	12
Other Manufacturing	6	5	5	8	7
Other Services	19	17	16	19	20
Pharmaceutical, Biotechnology, Healthcare	7	5	8	9	13
Technology Manufacturing & Services	16	14	14	11	12

INTERNSHIP ACCEPTANCES BY SELECTED INDUSTRIES



Based on 96.3% of internship accepting first-years who provided usable salary information.

* Percentages have been rounded to the nearest whole number.

The following industries were each represented by less than 1 percent of reported acceptances and are not included in the above table: Aerospace/Aviation/Defense, Agribusiness, Commercial Banking, Economic Development/Microfinance, Electronics, Engineering Services, Entertainment/Leisure/Recreation, Environmental Services & Sustainability, Insurance, Luxury Goods, Media, Medical Devices, Multimedia Products & Services, Other Consumer Products, Sports & Sports Management, Transportation/Logistics.

MONTHLY SALARIES

BY INDUSTRY, SUMMER INTERNS, CLASS OF 2014

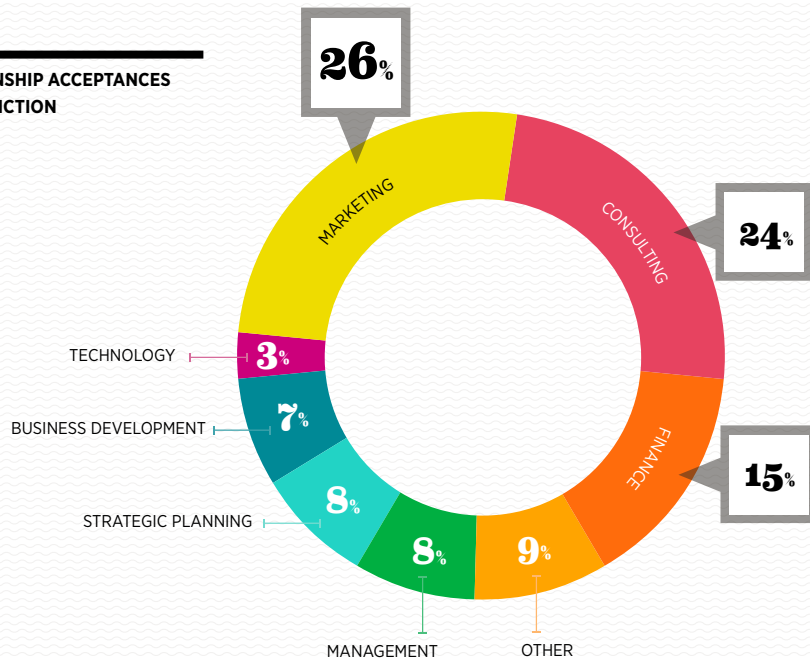
INDUSTRY	ACCEPTANCES (%)*	RANGE (\$)	AVERAGE (\$)	MEDIAN (\$)
Manufacturing	34	1,000–11,700	6,594	6,600
Apparel/Textiles	1	4,900–7,276	5,985	6,292
Automotive	1	4,200–7,500	6,125	6,250
Biotechnology	1	2,800–7,200	5,647	6,500
Chemicals	1	1,800–9,600	6,942	8,183
Food and Beverage	9	2,000–7,500	6,271	6,371
Household/Personal	2	3,000–7,750	6,190	6,100
Other Manufacturing	3	6,000–9,200	7,555	7,332
Other Technology	3	1,000–8,000	5,475	6,400
Pharmaceuticals	2	3,200–7,625	6,504	6,873
Software	3	4,000–8,500	7,220	8,000
Technology Equipment/Hardware/Networking	4	5,280–10,000	7,328	8,000
Services	66	625–20,000	8,058	8,000
Consulting	23	1,250–11,575	10,095	11,000
Diversified Financial Services	2	6,000–9,000	7,523	7,200
Education	2	2,000–6,000	3,829	3,200
Energy/Utilities	2	1,250–10,200	5,952	6,200
Healthcare Providers & Services	2	3,300–7,686	5,784	6,600
Hospitality/Tourism	2	4,000–6,800	5,324	5,500
Internet Services/E-Commerce	5	2,500–10,000	7,061	8,000
Investment Banking/Brokerage	5	4,100–10,850	8,678	8,333
Investment Management	3	2,500–8,350	7,313	8,300
Law/Legal Services	2	10,000–14,175	12,459	12,400
Nonprofit	2	1,195–5,000	2,933	2,600
Other Financial	1	1,200–8,333	5,133	5,500
Other Healthcare	1	6,000–8,000	6,874	6,800
Private Equity	3	2,000–20,000	9,731	8,000
Real Estate	1	2,000–7,050	3,816	2,400
Retail	7	4,000–9,850	6,429	6,500
Telecommunications	1	6,150–11,675	8,052	8,000
Venture Capital	2	625–8,000	5,060	5,000

MAJOR FUNCTIONS

CHOSEN BY SUMMER INTERNS, 2009–2013

FUNCTION	ACCEPTANCES (%)*				
	2013	2012	2011	2010	2009
Business Development	7	7	6	6	3
Consulting**	24	28	27	22	19
Finance	15	18	19	19	22
Management	8	5	4	4	4
Marketing	26	24	24	29	30
Other	9	11	13	11	14
Strategic Planning	8	7	7	8	8
Technology	3	—	—	—	—

INTERNSHIP ACCEPTANCES
BY FUNCTION



Based on 96.3% of internship accepting first-years who provided usable salary information.

*Percentages have been rounded to the nearest whole number.

**Includes consulting positions with public accounting firms as well as internal corporate consulting.

The following functions were each represented by less than 1 percent of reported acceptances and are not included in the above table: Administration, Commercial Banking, Corporate Development, Economic Analysis/Research, Financial Analyst/Research, Healthcare/Medical Professional, Human Resources, Market Research, Merchandising/Retail, Other Technology, Real Estate Development/Construction, Real Estate Finance, Research & Development, Retail Management, Sales, Technology Integration/Implementation.

MONTHLY SALARIES

BY FUNCTION, SUMMER INTERNS, CLASS OF 2014

FUNCTION	ACCEPTANCES (%)*	RANGE (\$)	AVERAGE (\$)	MEDIAN (\$)
Business Development	7	1,500–9,175	5,993	6,400
Consulting	24	1,300–11,575	10,030	11,000
Entrepreneurship	2	625–9,175	3,573	2,250
Finance	15			
Corporate Finance	3	5,000–7,500	6,563	6,500
Investment Banking	5	4,100–10,833	8,612	8,333
Investment Management	2	2,500–8,333	7,154	8,167
Mergers & Acquisitions	1	2,000–20,000	9,497	8,450
Other Finance	2	1,195–11,000	6,142	7,300
Private Client Services/ Wealth Management	1	8,000–8,333	8,272	8,333
Lawyer/Legal Professional	2	10,000–14,175	12,459	12,400
Management	8			
General Management/ Leadership Development	4	2,000–9,850	6,886	7,000
Operations/Production	1	4,200–8,200	6,767	7,600
Project Management	1	3,600–8,000	6,200	6,450
Supply Chain/Logistics	1	1,200–8,200	5,460	6,000
Marketing	26			
Brand/Product Management	14	1,440–8,500	6,466	6,371
Buyer/Merchandising	2	6,500–9,000	6,813	6,500
General Marketing	7	1,250–10,175	6,024	6,400
Product Development	1	3,880–8,200	7,216	8,000
Other	3	2,800–8,000	6,076	6,600
Strategic Planning	8	1,000–11,675	5,969	6,283
Technology	3			
Business Analysis and Design	1	4,000–8,800	7,025	7,650
E-Commerce/Internet/ Website Management	1	7,500–8,000	7,900	8,000

MAJOR EMPLOYERS OF SUMMER INTERNS

FIRMS HIRING THREE OR MORE STUDENTS

The Boston Consulting Group	22	Johnson & Johnson	6	L.E.K. Consulting	4	Kellogg Center for Research in Technology & Innovation (CRTI)	3
Bain & Company	18	Walmart, Inc.	6	PepsiCo, Inc.	4	Mattel, Inc.	3
McKinsey & Company	17	Danaher Corporation	5	Wm. Wrigley Jr. Company	4	MillerCoors	3
Apple, Inc.	14	Davita, Inc.	5	7-Eleven, Inc.	3	Morgan Stanley	3
Amazon	12	Dell Inc.	5	Baxter Healthcare	3	PwC	3
Kraft Foods Group	11	General Mills	5	Cambridge Leadership Associates (CLA)	3	Starbucks Coffee Company	3
Booz & Company	10	Groupon Inc.	5	DuPont	3	Starwood Hotels & Resorts Worldwide Inc.	3
Deloitte Consulting LLP	10	J.P. Morgan	5	Education Pioneers	3	UBS Financial Services	3
Target Corporation	10	VISA Inc.	5	Ernst & Young	3	Unilever	3
A.T. Kearney	7	Accenture	4	Evercore Partners	3	Total	283
Microsoft Corporation	7	Bank of America Merrill Lynch	4	Facebook	3		
Nike, Inc.	7	The Coca-Cola Company	4	Genentech, Inc.	3		
Goldman, Sachs & Co.	6	Dow Corning Corporation	4	Google	3		



SOURCES OF ACCEPTED INTERNSHIP JOB OFFERS

All first-years who reported their employing company are included in this listing.

*Includes: Alumni referral, employer informational meeting/dinner, faculty referral, off-campus interview (CMC facilitated).

**Includes: Career forum, conferences, search firm/employment agency, starting own business.

SUMMER INTERN ACCEPTANCES BY ORGANIZATION

This listing includes all first-years who reported their employing company. In some cases, students may have chosen not to include their names. We have included the total number of students hired by each organization in parentheses after the organization name.

21ST CENTURY ONCOLOGY (1)

Garcia, Carolina Nunez

3M — STRATEGIC BUSINESS DEVELOPMENT (1)

Quell, Michael James

500 STARTUPS (1)

Espinosa de los Monteros, Miguel Castillo

7-ELEVEN, INC. (3)

Mathews, Geetha Jane
Ness, Erin Leigh
Vranderic, Peter Fenwick

A

AAEF (1)

Cabiri, Ertjan

ABBVIE (1)

Speelman, Christopher Aaron

ACCENTURE (4)

Eckhardt, Douglas William
Fraier, Joseph
Gast, Rebecca
Siu, Sonia Tim-Chi

ACCESS MOBILE (1)

Price, Alexander Stevens

ACE METRIX (1)

Davis, Brynna Gauer

ACUMEN FUND (1)

O'Dell, Holly

ADOBE SYSTEMS (2)

Hartz, Neil Eric
Venzon, Matthew

AGAMYA CAPITAL LLC (1)

Poucel Sanchez Medal, Pablo

ALYESKA INVESTMENT GROUP (1)

Saretsky, Matthew

AMAZON (12)

Archer, William Andrew
Chatterjee, Anirban
Han, Chuhuang
Ingalsbe, Adam Howard
Li, Kangcheng
Pan, Ang
Pan, Caroline
Sathyamoorthy, Vinayak
Shaban, Yousef
Suri, Kritarth
Yokoshima, Emi

AMPHENOL ALDEN PRODUCTS (1)

Ahn, Young-Eun

ANGIE'S LIST, INC. (1)

Benefiel, Ty Eugene

ANHEUSER-BUSCH INBEV (2)

Carnero Pinto, David
Fumagalli, Matthew William

APPLE, INC. (13)

Fong, Lisa
Fraser, Christine Allison
Lee, Eric Wonsuk
Littel, Christopher John
Longenbaker, Patrick William
Novielli, Colleen Susan
Phichaphop, Napat
Saha, Susmita
Ventura, Dyanne Liwanag
Wang, Julia Elise Jiuzhu
Zafirovski, Matthew D

APPLE, INC. — ITUNES (1)

Shah, Ravi Kirit

ARDENT CAPITAL (1)

Assavarujikul, Ekachat

AREZZO & CO. (1)

Fernandes, Leonardo Gurgel

ASIAN DEVELOPMENT BANK (1)

Tumewu, Elma Melinda Dorothy

AT&T (1)

Veal, Matthew Aaron

A.T. KEARNEY (7)

Bhatia, Siddharth
Chafin, Jesse Ryan
Coleman, Lowell
Goel, Dhruv
Goyal, Hemant
Kinnear, Bryan Javier
Villaca Lopes da Cruz, Luis
Guilherme

AURASENSE THERAPEUTICS (1)

Marques Nogueira, Marcelo

B

BAIN & COMPANY (18)

Abdollahian, Aydin Mohamad
Anwar, Sameer
Arnone, Scott Peter
Badanes, Elizabeth Corinne
Beckmann, Andrew David
Ford, Tyson Eliot
Kaneko, Yukihiko
Khandelwal, Richie
Narui, Jun
Nguyen, Trinh Huong
Sandig, Robert Laurence
Sepehrnia, Sahand
Steward, Oscar Colin
Thompson, Brenton Jarrett
Xanthakis, Chris
Xu, Jing

Zhang, Yuan

BAKER BOTTS (1)

Halverson, Joseph Thomas

BANCO ITAÚ S/A (1)

Reinoso Garcia Calderon, Maria Teresa

BANK OF AMERICA (1)

Woodley, Aria Ruth

BANK OF AMERICA MERRILL LYNCH (4)

Chen, Xi
Saxena, Manvendra S
Schachman, Matthew David
Setia, Vishwas

BARCLAYS CAPITAL (1)

Craig, Charles Douglas

BARING PRIVATE EQUITY ASIA (1)

Fang, Kai

BAXTER HEALTHCARE (3)

Danforth, Steven Dewitt
Ogieguata, Dominic Edosa
Villaroya, Aaron Paul

BD — BECTON, DICKINSON AND COMPANY (2)

Berman, Yael
Herleman, Andrew Robert

BIOGEN IDEC (1)

Coughlin, Jonathan Joseph

 BIOMARIN (1)

Chen, Cindy Ju-Hsin

 B LAB (1)

Hand, Katherine MacMillan

 THE BOEING COMPANY (1)

Bruns, Lauren Elizabeth

 BOOZ & COMPANY (10)

Briones Eraso, Maria

Diniz de Almeida, Tarcisio

Inoue, Yasutaka

Levy, Rachel Pauline

Luo, Jiali

Miller, Itai Solomon

Nene, Deepti

Rocha de Freitas, Elisabeth

Shekhar, Sudhanshu

Thakor, Akshay Ramesh

 BOSE CORPORATION (1)

Dronamraju, Harsha Sri

 THE BOSTON CONSULTING GROUP (22)

Arayakarnkul, Pochara

Barbour, Christopher

Binder, Carl Johan

Casaretto Caycho, Guillermo Mariano

Christopoulos, Nicole Jana

Colgan, Mitchell John

Fang, Kai

Gagnon, Jane Marie

Inglesby, Jaclyn

Kimes, Tyler Glen

Kosuge, Reina

Mioton, Christopher

Murali, Rajiv

Ross, Kaleigh Elizabeth

Roy, Nilotpal

Schepp, Richard Charles

Serlin, Joshua Allen

Strott, Johnathan Thomas

Unangst, Gilbert Stewart

 BRITISH TELECOMMUNICATIONS (1)

Kothari, Shradha

 C **CAESARS ENTERTAINMENT (1)**

Golin, Veronica Tallon

 CAMBRIDGE LEADERSHIP ASSOCIATES (CLA) (3)

Lee, Ting-Chia

Sarino, Carlyn Paliza

Tuck, Timothy Francis

 CARGILL (2)

Bowe, Patrick Earl

Lansard, Ingrid

 CATHOLIC HEALTH INITIATIVES (1)

Wallace, Terrance Terrell

 THE CHARTIS GROUP (1)

Schlund, Michael Joseph

 CHEVRON (2)

Balyka, Aliaksandr

Zhao, Richard

 CHICAGO CUBS (2)

Barrack, Tyler Pilkington

Rucci, Edmund Platt

 CHRYSLER GROUP LLC (1)

Sax, Daniel

 CIM GROUP, LP. (1)

Bryer, Nicholas Gilman

 CISCO SYSTEMS (2)

Zhou, Meng

 CITI (2)

Lai, Yi-Ling

 CITRUS PAY (1)

Goyal, Tina

 CIVIC CONSULTING ALLIANCE (1)

Fischer, Cody Michael

 CLASSIFIED VENTURES, LLC — CARS.COM (1)

Kelly, Asheley Danielle

 CLEARSKY POWER & TECHNOLOGY FUND (1)

Suri, Riti

 CLEARY GOTTLIEB STEEN & HAMILTON (1)

Waldin, Benjamin Edward

 THE CLOROX COMPANY (1)

Dobrowski, Aimee Catherine

 THE COCA-COLA COMPANY (4)

Barnes, Julia Kathleen

Burzminski, Christopher Michael

Markham, Kathryn Anne

 COLGATE-PALMOLIVE COMPANY (1)

Morris, Erica Joy

 CONAGRA FOODS, INC. (1)

Louie, Andrew David

 COYOTE LOGISTICS (1)

Hutchins, Thomas Nikolaus

 CREDIT SUISSE (1)

Rauner, Elizabeth Burr

 CUSTOMMADE (2)

Zhang, Rong

Zhang, Zhuo

 CVS/CAREMARK (1)

Smythe, Marguerite Leighton

 CYRELA (1)

Madruga da Silva, Andre Felipe

 D **DALBERG GLOBAL DEVELOPMENT ADVISORS (1)**

Kita, Akifumi

 DANAHER CORPORATION (5)

Cook, Steven Richard Earl

Higgins, Ryan Charles

Koren, David Tannehill

Miorin, Christopher David

Wachsmuth Suttner, Mathias

 DAVITA, INC. (5)

Bajaj, Shoib

Nagarajan, Anand

Pan, Nancy

Shastri, Priya

Stutz, Sara Therese

 DELL INC. (5)

El Manser, Otmane

Popelard, Alexandre

Zvoma, Muchadei Tichafa

 DELOITTE CONSULTING LLP (10)

Aidasani, Divesh Kishan

Aromire, Olakunle Olukayode

Evans, Meladee LaShae

Hatch, Westin Russell

Karnes, Laurel Kemp

Orr, Ryan Daniel

Perales Oltra, Javier

Subramanian, Rohit

Wang, Sara Qian

 DIMENSIONAL FUND ADVISORS (2)

Brown, Patrick Dean

Wampler, Samuel Rogers

 DOVER CORPORATION (2)

Murray, Michael James Chiotti

Sajjan, Sanjeev

 THE DOW CHEMICAL COMPANY (1)

Ali, Mir Khalid

 DOW CORNING CORPORATION (4)

Chen, Yizhou

Dong, Li-Wei

Kim, Byung Sung

Wang, Liangliang

DREAMIT VENTURES (1)

O'Briant, Jeremy

D-REV: DESIGN REVOLUTION (1)

Harvey, Megan Elizabeth

DUPONT (3)

Feng, Hsin-Yi

Gutgutia, Abhishek

Sato, Hiroyasu

E**E & J GALLO WINERY (1)**

Sharma, Mala Karuna

EBAY, INC. (1)

Banerjee, Shayak

EDUCATION PIONEERS (3)

Desmond, Colleen Marie

Pramatarova, Tatyana Ivanova

**ELEMENT BARS— ELEMENT
ENDURANCE (2)**

Dhir, Sandhya

Ellis, Jeffrey David

ELI LILLY AND COMPANY (2)

Ebihara, Shindo

Shin, Seung Ho

EMERSON ELECTRIC COMPANY (1)

Kim, Andrew J

ENDEAVOR GLOBAL (1)

Assavarujikul, Ekachat

ENPHASE ENERGY, INC. (1)

Arumilli, Gautham Venkat

ERNST & YOUNG (3)

Antonio, Nene Akuteye

Kreimer, Abraham Baruch

Piggee, Javier

EVERCORE PARTNERS (3)

Burke, Kerry Elizabeth

Comtois, Marcel Dominic

Waite, Adam Blair

EVERSTRING (1)

Chu, Zhuxiu

EXPEDIA, INC. — HOTELS.COM (1)

Wheless, Wesley

F**FACEBOOK (3)**

Chae, Iris Yesla

Chew, Ming-Hwei

Vijay, Rajeev

FENWICK & WEST (1)

Yang, Liu

FIRST CAPITAL PARTNERS (1)

James, Brian Daniel

FMC TECHNOLOGIES (1)

Boatwright, Austin Leeland

FORD MOTOR COMPANY (1)

Mosco, Christopher Robert

FRONT ROW EDUCATION (1)

Edwards, Jackson Aljian

FRONTIER COMMUNICATIONS (2)

Lahav, Ouri

G**GENENTECH, INC. (3)**

Chen, Gina

Shetty, Pooja Narayana

Zeiberg, Max

**GENERAL ELECTRIC — GE
CAPITAL (1)**

Proulx, Geoffrey

**GENERAL ELECTRIC — GE
ENERGY (1)**

Brozek, Kamil Piotr

GENERAL MILLS (5)

Crump, Stephen Alexander

Henry, Michael John

Lynch, Jenna Marie

Nankiinga, Louise

**GENERAL MOTORS TREASURER'S
OFFICE (1)**

Iguchi, Marcio

**GENZYME, A SANOFI COMPANY
(1)**

Del Alcazar Gil-Casares, Diego

GOLDMAN, SACHS & CO. (6)

Adams, Samuel Anderson

Diwakar, Gayathri Nagamannar

Lundquist, Kasey Boyer

Mills, Michael Garrett

Qu, Xianda

GOOGLE (3)

Besquin Neumann, Daniel

Carvajal, Rudolph Thomas

Cunningham, Anna Esther

GRASSROOT SOCCER (1)

Hsu, Joshua

GROUPON INC. (5)

Amouyal, David Ryan

Banks, Carlos Edwin

Dube, Richard Joseph

Semwal, Preeti

Snyder, Eric Robert

THE GROWTH HUB (1)

Haerum, Stina Merete

H**HALLIBURTON (1)**

Aggarwal, Hitesh

HANDYBOOK (1)

McKelvy, James Peter

HANWHA CHEMICAL (1)

Kim, Jonghyuk

**THE HARTFORD FINANCIAL
SERVICES GROUP (1)**

Ackuaku, Yorm

HEIRLUME (1)

Frucher, David MacArthur

HUDSON ADVISORS (1)

Smith, David Hal

I**IBM GLOBAL BUSINESS SERVICES
(1)**

Libershteyn, Yekaterina

IDEO, INC. (1)

Gurr, Jeffrey Ryan

**IMPACT INVESTMENT EXCHANGE
(ASIA) PTE. LTD. (1)**

Kiriyama, Takuya

INFOSYS, LIMITED (1)

Skouloudis, Andreas

INSIGHT EQUITY (1)

Henry, Jay Ross

**INTERNATIONAL BUSINESS
MACHINES CORPORATION (IBM)
(1)**

Seward, Andrew Grant

INTUIT (1)

Donner, Alan Joseph

INTUITIVE SURGICAL (1)

Larkin, Gregory Byrne

ITAÚ UNIBANCO (1)

Mones Cazon, Pedro Jose

J

JEFFERIES & COMPANY, INC. (1)

Park, Soo Jin

JOHNSON & JOHNSON (2)

Obiri, Angelique Balthazar

Ross, Rochelle

JOHNSON & JOHNSON — ETHICON ENDO-SURGERY, INC. (1)

Golden, Katherine

JOHNSON & JOHNSON — MCNEIL (2)

Craig, Kathleen Elizabeth

Dorsten, Margaret Elizabeth

JOHNSON & JOHNSON — NEUTROGENA (1)

Siemak, Renee Cristina

JOHNSON CONTROLS INC. (1)

Sinha, Karn Raj

J.P. MORGAN (5)

Aranguren, Matias

Cooney, Ellen Noreen

Kellert, Kevin

O'Grady, Sean Frederick

Shen, John

JPMORGAN CHASE (2)

Kawar, Nicholas Raji

K

KAISER PERMANENTE — THE PERMANENTE MEDICAL GROUP (1)

Mele-Algus, Alexandra

KELLOGG CENTER FOR RESEARCH IN TECHNOLOGY & INNOVATION (CRTI) (3)

Milazzo, Megan Lynne

Vij, Diksha

Wenger, Jordan Elizabeth

KIMBERLY-CLARK CORPORATION (1)

Kan, Thomas

KINEA (1)

Nunes Cerchiari Almeida, Ana

Paula

KIRKLAND & ELLIS LLP (2)

Calderon, Catherine Reed

Essen, Rosalyn Kristine

KONGA ONLINE SHOPPING LTD (1)

Odogwu, Amaka Frances

KRAFT FOODS GROUP (11)

Agrawal, Nisa Shivprasad

Facey, Tonya Natasha

Fleming, Evan Davis

Gonzales, Angela Paraiso

Hazelrig, Michael John

Larkin, Andrew

Palmer, Terika Lanese

Reardon, Marisa Lem

Rollins, Marcus Jamaal

Waterhouse, Jeff Irwin

L

LATAM CAPITAL ADVISORS (1)

LATHAM AND WATKINS (1)

Scherbring, Bridget

LAZARD FRÈRES & CO. LLC (1)

Cromelin, Paul Bowen

LEBUA HOTELS & RESORTS (2)

Prabhakaran, Balaji

Yu, Yijing

L.E.K. CONSULTING (4)

Akhauri, Nitesh

Chin, Zheng

Darland, Gregory Alexander

Pollak, Charles Fisher

LIBERTY MUTUAL INSURANCE COMPANY (2)

Bernardi, Elizabeth

Mei, Xiaojing

LINCOLN INTERNATIONAL LLC (1)

Orr, Richard Lowman

LINKEDIN (1)

Lien, Jennifer Su Yuan

M

MARTIN INVESTMENT MANAGEMENT, LLC (1)

Shao, Wan-Ting

MATTEL, INC. (3)

Baumann, Elizabeth Marie

Brito Cleto Lopes Domingues,
Pedro Miguel

Wu, Justin

MCDERMOTT WILL & EMERY LLP (1)

Tanton, Alexander Herrick

MCDONALD'S CORPORATION (1)

Darcy, Matthew John

MCKINSEY & COMPANY (17)

Bellido Hoefken, Ximena

Broit, Ori

Cadieux, Stephanie

Gonzalez Rugamas, Ricardo Miguel

Joyce, Thomas Michael

Kaul, Gayatri

Kim, Do Yeon

Lai, Eric

Liu, Caleb

Panikkar, Krishna Rohit

Quirolo, Michael Joseph

Ramaa, Ranjani

Shangkuan, Jason

Wein, Lauren

White, Matthew Joseph

Yokoshima, Emi

MCNALLY CAPITAL (1)

Willich, Barrett John

MEDTRONIC, INC. (1)

Harris, Ashley Peace

METLIFE, INC. (1)

Bassey, Utibe Odokwo

MGM RESORTS INTERNATIONAL (1)

Shapiro, Joshua David

MICROSOFT CORPORATION (7)

Chon, Christopher Dongho

Gaw, Jonathan Allen

Kurdin, Georgy

Lane, Jessica Danielle

Paine, Justin Seth

Rewari, Malavika

Roy, Sumanta

MILLERCOORS (3)

Bergson, Alexander

Brown, Taylor Kim

Clark, Joshua Daniel

MINIMAL DESIGN (1)

Sclater, Edward Ian

MOET HENNESSY USA (1)

Dana Beyda, Mauricio

MONDELEZ INTERNATIONAL, INC. (2)

Poon, Jim

Thompson, Ian Matthew

MORGAN STANLEY (3)

Kilduff, Daniel

Narui, Jun

Ning, Jing

MOSAIC (1)

Colman, Alexander Eric

MOTOROLA MOBILITY, INC. (1)

Zuo, Zhibo

MOTOROLA SOLUTIONS (1)

Navarro Garcia, Alejandro

N**NARRATIVE SCIENCE (1)**

Rennaker, Ryan Webster

NAVIS INVESTMENT PARTNERS (ASIA) LIMITED (1)

Cheng, Zhi Wei

NESTLÉ USA (1)

Biason, Kimberly Villanueva

NIKE, INC. (7)

Bates, Melvin

Binder, Joel Samuel

Galindo Escobedo, Sharon Andrea

Stamp, Todd Hunter

Taha, Rahshiene

Wickramasekara, Sachira Udes

Zarthar, Mark Matthew

NISSAN NORTH AMERICA, INC. (1)

Lee, Chul Heon

NORDSTROM INC. (2)

Ku, Angela Hai Sy

Richeda, Elizabeth Shauffer

NORTHERN LIGHT VENTURE CAPITAL (1)

Su, Chia-Chen

NORTHWESTERN UNIVERSITY INNOVATION AND NEW VENTURE OFFICE (1)

Hsieh, Edward

NOVARTIS PHARMACEUTICALS (1)

Kewalramani, Ritesh

O**OPPA (1)**

Adhanom, Emanuel B

OPPENHEIMER FUNDS, INC. (1)**OVATIVE/GROUP (1)**

Langone, Danielle

P**PACIFIC ALTERNATIVE ASSET MANAGEMENT COMPANY (1)**

Qu, Xianda

PAGE VAULT (2)

Cervieri, Guilherme

Olguin Perez, Jose Ignacio

PARAMOUNT PICTURES (1)

Screwvalla, Aviv Zarire

THE PARTHENON GROUP (2)

Saraf, Gaurav

PEARSON EDUCATION (1)

Bronesky, Antoinette Almeda

PEPSICO INTERNATIONAL (1)

Maqsood, Khurram

PEPSICO, INC. (3)

Patel, Priti Mafat

Riddell, Katherine Ann

Wilderotter, Daniel Philip

PFIZER, INC. (1)

Burke, Blair Elizabeth

PRINCIPIA MANAGEMENT GROUP (1)

Jeon, Donghoon

PROCTER & GAMBLE (1)

Irving, Camiel J

PROPHET (2)

Cooper-Mullin, Emma

John, Sara Elizabeth

PWC (3)

Bass, Joseph Daniel

Mitra, Abhishek

Turner, Cory

Q**QUALCOMM VENTURES (1)**

Jain, Varun

R**RECKITT BENCKISER (2)**

Pagliuca, Alessio

Raghvendra, Namrta

RELATED COMPANIES (1)**REVELRY BRANDS (1)**

Cook, Alexander Andrews

ROLAND BERGER STRATEGY CONSULTANTS (2)

Rastogi, Gautam

Thum, Eric Jonathan

S**SAGE CLARITY (1)**

Oliphant, Thomas Jason

SAMSUNG CARD (1)

Chung, So Young

SAMSUNG GLOBAL STRATEGY GROUP (2)

Kenley, Joseph Alexander

Wang, Shiyuan

SANDBOX INDUSTRIES, LLC (1)**SC JOHNSON (1)**

Congress, Catherine Rose

SEARS HOLDINGS CORPORATION (1)

Su, Ya-Hsuan

SEPHORA (1)**SHELL OIL COMPANY (1)**

Bennett, Malachi Causey

SIBSON CONSULTING (1)

Stolarczuk, Elizabeth

SIMMONS & COMPANY INTERNATIONAL (1)

Iyengar, Vinu Sampath

SIMPSON THACHER & BARTLETT LLP (2)

Im, Hyung Jean

Yang, Liu

SKYLINE GLOBAL PARTNERS (1)

Strother, Emory Shepard

SONY NETWORK ENTERTAINMENT INTERNATIONAL (1)

Assedou, Guy Shlomo

STARBUCKS COFFEE COMPANY (3)

DeJulio, Nicholas Gordon

Nguyen, Hiep Tan

Ogunmola, Eniola Mojisola

STARWOOD HOTELS & RESORTS WORLDWIDE INC. (3)

Alexander, Christopher Kevin George

Berengut, Zarifa

Jin, Ye

STERLING PARTNERS (1)

Berghorst, Alexander Carter

SYMANTEC CORPORATION (1)

Sheth, Vaidehi Rajen

T**TACO BELL (1)**

Huang, Linda Jingzhou

TAKEDA PHARMACEUTICALS USA, INC. (2)

Bechtel, Andrea Leigh

Ellingson, Brandon Christopher

TALERIS (GE/ACCENTURE JV) (1)

Cepeda, Daniel Enrique

TARGET CORPORATION (10)

Brennen, Michael Joseph

Colyer, Christine Elizabeth

Henry, Claire Elizabeth

Mulrain, Brendan Timothy

Padgett, Elizabeth Kashi

Souffrant, James

Spackey, Natasha Pelayo

Tran, Diana

Whalen, Andrew Christopher

Zwiener, Laura Burr

TARPON INVESTIMENTOS S/A (1)

Rodrigues Aranha, Raniery

TECHNOSERVE (1)

TERRACYCLE (1)

Furr, Jessica Lynne

TOYOTA MOTOR SALES USA, INC. (1)

Greenberg, Julia

TRIBRIDGE RESIDENTIAL (1)

Ahmed, Ashfaque

U

UBS INVESTMENT BANK (2)

Tafuna, David Finau

UBS SECURITIES JAPAN (1)

Kosuge, Reina

UNICEF INNOVATION (1)

Krishnan, Charag

UNILEVER (3)

Hubbard, Paul

Jagannath, Diana Jaffe

URS (1)

Kumar, Rupesh

V

VANGUARD (2)

De Luca, Thomas J

Victorius, Jared Frederick

VARSITY HEALTHCARE PARTNERS (1)

Vipond, Michael David

VINO VOLO (1)

Shepard, Samuel Winslow

VISA INC. (5)

Aryeetey, Lawrence Seth Nii Armah

Fang, Esther Weiting

Jabbara, Younes Michael

Lu, Daniel

Turbahn, Gilad

VMWARE (2)

Blits, Navot

Nagelmeyer, Thomas George

VOSGES HAUT-CHOCOLAT (1)

Johnson, Emily

W

WALGREENS (2)

Kaplan, Ann Yahr

Rachmiel, Sarah Reisler

WALMART, INC. (4)

Kargbo, Mohamed Sahid

Lin, Christina

Molinaro, Lisa

WALMART LABS (1)

Goldman, Kyle

WAL-MART STORES, INC. (1)

Dalphonse, Diana Ivanova

THE WALT DISNEY COMPANY (1)

Moore, Eric Timothy

WELLS FARGO & COMPANY (2)

Cornell, William Hendrick

Elenjickal, Mathew Joseph

WILLIAM BLAIR AND COMPANY, L.L.C. (1)

McCourt, Michael Patrick

WIND POINT PARTNERS (1)

Lawler, Joseph Christopher

THE WINE GROUP (2)

Lauderdale, Christopher James

Tangney, Melinda Anne

WM. WRIGLEY JR. COMPANY (4)

Angle, Devin James

Barot, Aasha

Healey, Dustin Jerome

Wan, Ting-wei

WOLVERINE WORLDWIDE INC. (1)

Crowley, Meredith

**WORLD BANK GROUP —
INTERNATIONAL BANK FOR
RECONSTRUCTION AND
DEVELOPMENT (1)**

Muramatsu, Takechi

CORPORATE AFFILIATES

\$250,000+

Abbott Laboratories Fund

\$50,000 to \$249,999

BP International
 Deloitte
 Eisai Co. Ltd.
 Illinois Tool Works
 Northern Trust Company
 Qualcomm

\$25,000 to \$49,999

Bain & Company
 BMO Harris Bank
 Booz & Company
 Deere & Company
 General Mills
 General Motors Foundation
 New World Ventures
 The Raytheon Company
 Target Corporation

\$10,000 to \$24,999

Accenture
 Anheuser-Busch
 The Boeing Company
 The Boston Consulting Group
 Brown-Forman Corporation
 Chevron
 ConAgra Foods, Inc.
 Danaher
 Eaton Corporation
 Eli Lilly & Co
 Emerson
 Goldman, Sachs & Co.
 Johnson & Johnson
 Leo Burnett
 Macquarie Capital Group
 Mead Johnson Nutrition
 McKinsey & Company
 Mondelez International Inc.
 Nike, Inc.
 Northwood Investors, LLC
 PricewaterhouseCoopers LLP
 Telephone and Data Systems, Inc.
 Teradata
 Unilever

\$5,000 to \$9,999

Alliance for a Green Revolution
 Banco de Credito Del Peru
 Bank of America
 Baxter Healthcare Corporation
 BD — Becton Dickinson and Company
 Bristol-Myers Squibb Co.
 Dermody Properties
 Equity Office Properties
 Green Mountain Coffee Roasters, Inc.
 Kirkland and Ellis LLP
 Minute Suites, LLC
 Oando Energy Resources
 ProLogis
 SC Johnson & Son Inc.
 Vendome Capital, LLC
 Ventas Realty Limited Partnership
 Wal-Mart Stores Inc.
 Winston & Strawn LLP
 Zall Development Group Ltd.

CAREER MANAGEMENT CENTER STAFF

EMPLOYER RELATIONS

Liza Kirkpatrick

Director, Employer Relations

Madeleine Brown

Assistant Director, Business Development

Jo Falk

Assistant Director, Business Development

Lisa Kozlo

Assistant Director, Industry Relations

Sam Samberg

Assistant Director, Industry Relations

Megan Thomas

Assistant Director, Industry Relations

Mario Vela

Assistant Director, Business Development

CAREER ADVISING AND EDUCATION

Mary Simon

Director, Career Advising and Education

Silvia Bajo

Associate Director

Kate Bradley

Associate Director

Joseph Patton

Associate Director

Michael Schaefer

Associate Director

Nancy Sims

Associate Director

GLOBAL RELATIONS AND INTERNATIONAL COACHING

Carla Edelston

Director, Global Relations and International Coaching

Madison Morris

International Resource Coordinator

CAREER RESOURCE CENTER

Kara Moore

Librarian

Michalla Sedano

Assistant Librarian

OFFICE ADMINISTRATION

Lin-Wei Bonney

Administrative Assistant, Alumni, Part-Time and Executive MBA Career Services

Evelyn Davis

Career Management Associate

Danielle Hudak

Office Manager

Marissa Moore

Department Assistant, Programs

Julia Navarre

Assistant Director

PART-TIME AND EXECUTIVE MBA CAREER SERVICES

Adnan Rukieh

Director, Part-Time and Executive MBA Career Services

ALUMNI CAREER SERVICES

Matthew Temple

Director, Alumni Career Services

Ann Browning

Career Coach

Karie Davis

Career Coach

Beth Korn

Career Coach

Bob Langewisch

Career Coach

Alyssa Matheson

Career Coach

© 2013 Northwestern University. All rights reserved. The information in this book may not be reproduced in any form without the written consent of the Kellogg School of Management. 11-13/KSM-KM

Northwestern University is an equal opportunity, affirmative action educator and employer.

Northwestern University does not discriminate or permit discrimination by any member of its community against any individual on the basis of race, color, religion, national origin, sex, sexual orientation, gender identity, gender expression, parental status, marital status, age, disability, citizenship, or veteran status in matters of admissions, employment, housing, or services or in the educational programs or activities it operates.

Harassment, whether verbal, physical, or visual, that is based on any of these characteristics, is a form of discrimination. This includes harassing conduct affecting tangible job benefits, interfering unreasonably with an individual's academic or work

performance, or creating what a reasonable person would sense is an intimidating, hostile, or offensive environment.

While Northwestern University is committed to the principles of free inquiry and free expression, discrimination and harassment identified in this policy are neither legally protected expression nor the proper exercise of academic freedom.

For advice or assistance regarding this policy, contact the Office of Equal Opportunity & Access, 720 University Place, Evanston, Illinois 60208-1145, 847.491.7458

Northwestern University reserves the right to change without notice any statement in this publication concerning, but not restricted to, rules, policies, tuition fees, curricula, and courses. This booklet is part of a package of informational publications intended to provide information related to the Kellogg School of Management.

THINK BRAVELY™



CAREER MANAGEMENT CENTER

KELLOGG SCHOOL OF MANAGEMENT | NORTHWESTERN UNIVERSITY
2001 SHERIDAN ROAD | EVANSTON, IL 60208-2001

847.491.3168 | CMC@KELLOGG.NORTHWESTERN.EDU
[KELLOGG.NORTHWESTERN.EDU/CAREER](https://kellogg.northwestern.edu/career)