

Installing X-Win32

Written by P. Ledesma
September 22, 2000

1. Downloading and installing the application

- All the necessary files are located in the following URL, a web page from Northwestern's Academic Technologies group:

<http://avendesora.at.nwu.edu/x-win32/>

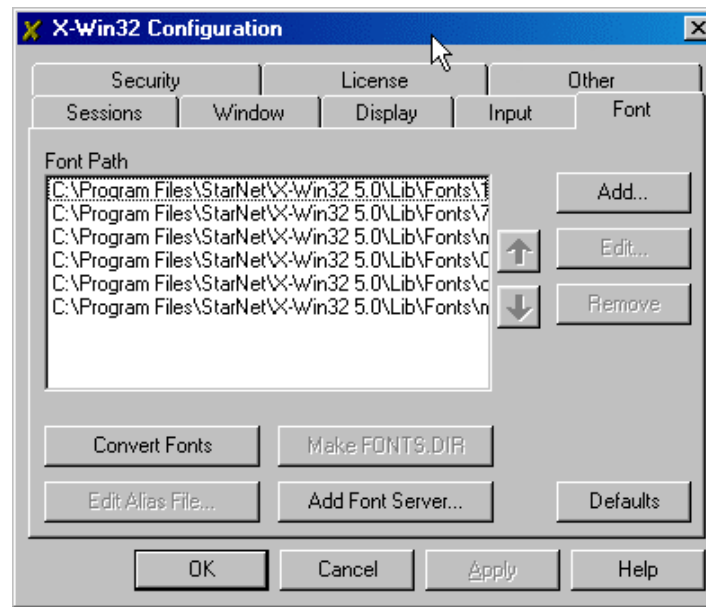
- Download the application installer to a temporary directory. The download link for version 5 is provided in the first paragraph of the document listed above.
- Launch the installer. Open the directory where you stored it. The file name is "X-Win503s.exe". As you go through the installation process, you will be prompted for a serial number, also available in the web page referenced above. All of Kellogg's machines in Anderson/Leverone are part of the 129.105.0.0 subnet.

2. Help file "glitch"

- The first time you launch *X-Config* (or *X-Win32*) and try to call the help menu, the application may not find the Help files. You can browse your files to find the file manually and the application will "remember" the location for future use. The help file is called "XWin32_en.hlp" and it was installed in the same directory as the application (for example, "C:\Program Files\StarNet\X-Win32 5.0")

3. Adding fonts

- When you install *X-Win32*, there are four sets of fonts installed by default in the "Fonts" folder, which is a sub-directory of the "X-Win32 5.0\Lib" folder. Each font set is stored in a separate folder.
- You may need additional fonts sets. Additional font sets can be downloaded through the link provided above (scroll to the end of that web page). In particular, you may want to install the "Sun CDE fonts" and the "Math fonts".
- Download each set of necessary fonts to a separate folder within X-Win32 5.0\Lib\Fonts. For example, create a folder called "cde" for the Sun CDE font set.
- Go to each folder and double click on the executable file you downloaded to extract all the fonts in the set. For example, to expand all the Sun CDE fonts, double click on the "fon_cde".exe file you downloaded.
- Open *X-Config* by choosing it from the Start menu.
- Click on the Fonts tab



- Click on “Add”. *X-Config* will prompt you for the location of the additional font set. Find and open the folder for the first of the font sets you want to add. Repeat the procedure for each of the new font sets. When you are done, click on the “OK” button.