

## Beyond plain vanilla: Modeling joint product assortment and pricing decisions

Michaela Draganska · Michael Mazzeo ·  
Katja Seim

Received: 21 October 2007 / Accepted: 20 November 2008  
© Springer Science + Business Media, LLC 2009

**Abstract** This paper investigates empirically the product assortment strategies of oligopolistic firms. We develop a framework that integrates product choice and price competition in a differentiated product market. The present model significantly improves upon the reduced-form profit functions typically used in the entry and location choice literature, because the variable profits that enter the product-choice decision are derived from a structural model of demand and price competition. Given the heterogeneity in consumers' product valuations and responses to price changes, this is a critical element in the analysis of product assortment decisions. Relative to the literature on structural demand models, our results show that incorporating endogenous product choice is essential for policy simulations and may entail very different conclusions from settings where product assortment choices are held fixed.

---

The authors thank MSI for financial support and Noriko Kakihara for excellent research assistance. This paper has greatly benefited from comments from Ulrich Doraszelski, Brett Gordon, Ken Wilbur and seminar audiences at University of Chicago, Duke, UNC, USC, and the Summer Institute for Competitive Strategy at Berkeley.

---

M. Draganska (✉)  
Graduate School of Business, Stanford University, Stanford, CA 94305-5015, USA  
e-mail: draganska\_michaela@gsb.stanford.edu

M. Mazzeo  
Kellogg School of Management, Northwestern University, Evanston, IL 60208-2001, USA  
e-mail: mazzeo@kellogg.northwestern.edu

K. Seim  
Wharton School of Business, University of Pennsylvania, Philadelphia, PA 19104-6372, USA  
e-mail: kseim@wharton.upenn.edu

**Keywords** Product assortment decisions · Multi-product firms · Discrete games

**JEL Classification** L0 · L1 · L2 · L8 · M3

## 1 Introduction

Decisions about product assortments and prices are among the most fundamental choices firms make. When selecting which products to offer, a firm in a competitive environment has to weigh the benefits of a “popular” product space location against the potential downside of fiercer price competition. Ever since Hotelling’s (1929) seminal paper, this fundamental tradeoff has been central to the literature. Deciding how to weigh demand against competitive considerations also remains a primary concern in applied contexts, with managers grappling over pricing and product assortment decisions.

The tradeoff between demand and strategic considerations is also at the heart of the empirical market entry literature (Seim 2006; Mazzeo 2002; Bresnahan and Reiss 1991, 1987). This literature relies solely on information contained in discrete firm decisions to infer bounds on profitability. For example, the fact that a firm operates in a particular market allows the inference that it is more profitable to operate in that location than to exit. The coarseness of these discrete data make it difficult to base the profit function on all but the simplest of demand structures, ones which generally do not represent product-market competition in oligopolistic industries with differentiated products well. As a result, the majority of the literature focuses on relatively homogeneous competitors, such as single-outlet retail stores in well-delimited, small markets. For frequently purchased products that differ in attributes, quality, and brand value, the interplay between consumer preferences for product attributes and their price sensitivities is central to the product offering decision. Detailed modeling of demand and price competition is therefore of key importance in empirically assessing the determinants of product choices.

In this paper we develop an integrated empirical framework to investigate how firms make product-choice decisions in differentiated products industries. In contrast to the extant empirical entry literature, we model explicitly product market competition between the products that firms choose to offer. The resulting structural profit function allows us to separate the role of consumer preferences for products’ attributes from marginal and fixed cost considerations for product introductions. We start with a discrete-choice demand model for differentiated products and from it develop an equilibrium model of joint product assortment and pricing decisions. The availability of richer data, in particular data on prices and quantities, allows us to better separate the strategic considerations in product assortment decisions from market heterogeneity that drives consumer demand and marginal costs.

We demonstrate in a series of counterfactual experiments how changes in demand or market structure affect equilibrium product assortments and

prices. Considering product choices as strategic variables to the firm when conducting policy analyses yields different predictions than a simpler model that holds these fixed. We show, for example, that a reduction in the number of competitors due to a merger may be profitable for the merging firm, while at the same time benefiting consumers in the form of higher product variety. To the extent that consumer surplus gains from product variety outweigh losses from higher prices in the more concentrated market, we illustrate that a merger may be unambiguously welfare enhancing. This prediction critically depends on the ability of firms to respond in their assortment choices to the new market structure: With fixed assortment choices consumers always lose from the merger due to higher prices.<sup>1</sup>

The existing literature has made considerable progress in characterizing competition among heterogeneous firms by focusing on component parts of the product assortment decisions with separate streams of research. Structural demand models generate consistent estimates of price elasticities given the products that firms have chosen to offer, but they assume that these products and their characteristics are exogenous and fixed (see e.g., Berry 1994; Berry et al. 1995; Nevo 2000). However, firms frequently adjust their product portfolios in response to changes in the economic environment, such as consolidation due to mergers. Similarly, a national manufacturer can easily adapt offerings in a given market to reflect changing local demographics, seasonal demand spikes, or changes in the local competitive environment. Berry and Waldfogel (2001) and Berry et al. (2004) provide empirical evidence of instances of product repositioning after consolidation or expansion in an industry. The assumption of fixed product assortments may thus be problematic.

At the same time, there is growing literature on the supply side that endogenizes product-choice decisions for heterogeneous competitors, emphasizing the strategic aspects of product choice (Mazzeo 2002; Einav 2003; Seim 2006). These models focus on explaining entry and location decisions in situations where prices are not a choice variable of the firm or use a reduced-form profit function that does not explicitly incorporate the prices and quantities of the products offered. Firms' product-space locations and those of their competitors are the sole arguments of the firms' objective function, thereby also limiting the scope of counterfactual exercises one can conduct using the estimated parameters. Without an explicit model of demand and post-entry product market competition, for example, we cannot make inferences about equilibrium prices after a product portfolio change, e.g., due to a merger. An early attempt to tackle this issue is Reiss and Spiller (1989), albeit in the context of symmetric firms offering one of two products. Thomadsen (2007) uses estimated demand systems to conduct counterfactual analyses of location competition between single-outlet retailers. His work does not attempt to

---

<sup>1</sup>These results complement recent theoretical work by Gandhi et al. (2008) that finds the potential for substantial differences in consumer welfare and profitability effects of a merger when allowing post-merger product repositioning relative to a fixed product assortment.

directly exploit the information entailed in firms' location choices to infer fixed cost determinants of entry decisions, but instead highlights the role of travel costs in determining equilibrium choices in simulations.

We estimate our empirical model of price and product selection by multi-product firms using data on supermarket ice cream sales to illustrate the empirical implementation. Industry analysts and regulators frequently discuss the interaction between flavor selection and pricing in shaping the competitive environment of ice cream markets. The U.S. Federal Trade Commission (FTC) recently sought a preliminary injunction to block a proposed merger between two competing ice cream manufacturers on the grounds that it would "... lead to anticompetitive effects ... including less product variety and higher prices."<sup>2</sup>

We focus on two national manufacturers—Breyers and Dreyers—that meet in 64 separate regional markets. Since our data is aggregated across stores in a market area, we consider the manufacturers' product-choice decisions of which flavors to offer at the market level abstracting from the manufacturer-retailer interaction. The institutional realities in the ice cream industry suggest that manufacturers have substantial control over the varieties placed in the supermarkets. Ice cream is not handled through supermarket warehouses but through a direct-to-store distribution network.<sup>3</sup> Ice-cream manufacturers "rent" freezer space in the stores and retain full responsibility for what to stock.

We model the possible offerings in the "vanilla" subcategory, which is by far the most frequently purchased flavor, accounting for more than one quarter of all sales. Interestingly, in recent years there has been a number of new product introductions in this space—Breyers and Dreyers now offer up to six varieties of vanilla. The size and evolution of the product category suggests that choices among vanillas are important in their own right, while also being representative of flavor offering decisions across the entire product assortment for these brands.

We consider a two-stage setup where firms initially make their assortment decisions in a discrete game that draws on their variable profits derived in the subsequent stage of price competition. In our set-up, firms have at their disposal a set of previously developed flavors from which they choose a subset of offerings depending on local product market and competitive conditions. We assume that competing firms have incomplete information about each others' profitability of offering particular assortments. This assumption allows us to avoid comparing all possible product configurations for all firms to ensure that no profitable unilateral deviation exists, which is necessary to compute the equilibrium in a complete information setting (Seim 2006). Instead, we derive the Bayesian Nash equilibrium conjectures—a computationally much easier task (Rust 1994). As such, the observed product offerings are optimal

<sup>2</sup>Information from the FTC website at [www.ftc.gov/opa/2003/03/dreyers.htm](http://www.ftc.gov/opa/2003/03/dreyers.htm). Note that the FTC's concerns related primarily to Dreyers' super-premium brands (Dreamery, Godiva and Starbucks).

<sup>3</sup>It is delivered by partners of Breyers (an independent broker network) and by Dreyers' in-house distribution arm.

ex ante—if others had been chosen, the resulting price and quantity outcomes would have yielded lower profits for the market participants. The sequential structure of the game where firms choose prices after observing their competitors' first-stage assortment choices allows us to separately identify demand and marginal cost parameters from other determinants of the assortment decisions.

In summary, this paper makes several contributions. We advance the existing market entry research by incorporating a fully specified model of product market competition to derive the payoffs of alternative flavor offering strategies. In the process, we discuss which assumptions are necessary to incorporate unobservable demand and supply components into such a joint modeling approach and how to modify existing estimation procedures to accommodate it. We show how data on prices and quantities can enrich the insights obtained from traditional location choice or entry models. Relative to standard demand models, we demonstrate how incorporating endogenous product choice is essential for policy simulations, as it may entail very different conclusions from settings where product assortment choices are held fixed.

The remainder of this paper is organized as follows. In Section 2 we develop the modeling framework. Section 3 describes the ice cream market and the data we use for the empirical analysis. We outline our estimation approach in Section 4 and then discuss the estimation results in Section 5. The proposed modeling framework along with the estimated parameters allow us to conduct various policy experiments, which are presented in Section 6. Section 7 concludes with directions for future research.

## 2 Model

A total of  $b = 1, \dots, B$  firms (brands)<sup>4</sup> decide which flavors to offer in a given market and how to price them given their expectation of their competitors' offerings, demand, and a fixed cost of offering each subset of flavors.

In the first stage, the firms decide which flavors to offer. Each firm starts with a predetermined set of potential flavors to offer and selects the optimal subset of flavors among this potential set. In the second stage, firms observe each others' flavor choices. Conditional on their own and their competitors' choice of offerings, firms choose prices.

Clearly, firms do not revise offerings for all potential flavors in each period and market. There are certain flavors that a brand always offers. We call them staples. The assortment decisions being made concern only what we refer to as the optional flavors. The flavor choice model can be thus thought of applying to optional flavors of a brand that are not offered in all of the markets, as

---

<sup>4</sup>In the remainder of the paper we use firms and brands interchangeably.

opposed to the staple flavors of a brand.<sup>5</sup> While we abstract from the product offering decision for staple flavors, our model takes into account the demand for staples in determining the price for all flavors in the market.

More formally, brand  $b$  has flavors  $f = 1, 2, \dots, O_b, O_b + 1, O_b + 2, \dots, F_b$  at its disposal. The optional flavors are  $1, \dots, O_b$ ; flavors  $O_b + 1, \dots, F_b$  are the staples that the firm always offers. Note that the optional and staple flavors may differ from brand to brand. Define the vector  $d_{bt} = (d_{b1t}, \dots, d_{bO_bt}) \in \{0, 1\}^{O_b}$ , where  $d_{bft}$  indicates whether optional flavor  $f$  is offered by competitor  $b$  in market  $t$ .

### 2.1 Stage 2

In the second stage, we solve for equilibrium prices for every possible combination of flavor choices. These prices then flow back into the first stage to determine profits for each of the flavors that a firm is considering.

*Consumer demand* We assume a discrete choice model of demand. Let  $U_{bfkt}$  denote consumer  $k$ 's utility for brand  $b$ 's flavor  $f$  in market/period  $t$ . We specify

$$U_{bfkt} = X_{bfkt}\beta_k - \alpha_k p_{bt} + \epsilon_{bfkt} = \delta_{bft} + \mu_{bfkt} + \epsilon_{bfkt} \tag{1}$$

where  $\delta_{bft}$  is the mean utility across consumers. We allow for consumer heterogeneity through  $\mu_{bfkt}$ , a deviation from mean utility (for a similar demand formulation, see e.g. Nevo (2001) or Berry et al. (1995)). In the above specification of utility,  $X_{bfkt}$  denotes observed characteristics of the flavor, such as firm and/or flavor fixed effects, whether the flavor is featured in the store ads or on display in the store in a given market.  $p_{bt}$  denotes the price charged by firm  $b$  in market  $t$ . Note that prices for all flavors within a brand are the same, as is typical in product categories such as ice cream (Shankar and Bolton 2004; Draganska and Jain 2006). We assume that the random component of utility,  $\epsilon_{bfkt}$ , is distributed according to an extreme value distribution. It is known to the consumer, but observed by the firms or the researcher only in distribution.

Let the distribution of  $\mu_{bfkt}$  across consumers be denoted as  $H(\mu)$ . We integrate the consumer-level probabilities to derive an offered flavor's aggregate market share across all consumers:

$$s_{bft}(p_{1t}, \dots, p_{Bt}; d_{1t}, \dots, d_{Bt}) = \int \frac{e^{\delta_{bft} + \mu_{bfkt}}}{e^{\delta_{00t}} + \sum_{b'} \sum_{f'=1}^{O_{b'}} d_{b'f't} e^{\delta_{b'f't} + \mu_{b'f't}} + \sum_{b'} \sum_{f'=O_{b'}+1}^{F_{b'}} e^{\delta_{b'f't} + \mu_{b'f't}}} dH(\mu). \tag{2}$$

<sup>5</sup>The loss of information is not severe because all we can learn from the fact that a brand always offers a particular flavor is that the cost of offering that flavor is smaller than the lowest incremental variable profit across periods from offering it, which would only yield an upper bound on such costs.

Market shares depend on prices  $p_{1t}, \dots, p_{Bt}$  as well as flavor offerings  $d_{1t}, \dots, d_{Bt}$ . We allow the mean utility for the outside good,  $\delta_{00t}$ , to vary with market demographics and seasonal effects.

Demand models of this type typically incorporate unobserved (to the researcher) product attributes in consumer utility that are a potential source of price endogeneity (Berry 1994; Berry et al. 1995). In addition, the presence of unobservable characteristics presents a classic selection problem (Heckman 1978) because firms only offer products with anticipated high demand. Modeling firms' product assortment choice explicitly as we do is a potential way to correct for this selection bias, but it requires recovering the full distribution of the unobservable characteristics. While we can infer market/time-specific unobservable attributes associated with product assortment that have been chosen, inferring the value of the unobservables for non-offered products is infeasible without imposing additional (strong) assumptions. For example, if we assumed that firms only observe the demand shocks at the time of their pricing, but not at the time of their assortment decision, then firms would need to form expectations over them in choosing offerings. However, as will become clearer when we present the supply model below, a flavor's variable profit is a highly nonlinear function of the unobservables, so taking this expectation is a nontrivial exercise. In particular, we would need to make some distributional assumption for the unobservables, thus implying that we know the distribution of the equilibrium prices (see Berry (1994) for an explanation of why this type of assumption is inconsistent with the equilibrium model). Our solution to this problem is pragmatic: We assume that in our empirical setting the brand-flavor-specific constants in the demand system along with the market characteristics and time effects capture most of the unobserved determinants of brand-flavor shares across markets.

*Firm profits* For a set of flavors determined in the first stage, firm  $b$  chooses prices to maximize expected profit. Firms are assumed to compete in Bertrand-Nash fashion, given their cost structures.

Firm  $b$  incurs a marginal cost of  $c_{bt}$  for each unit offered in market  $t$ . The marginal costs of offering a flavor include costs for ingredients such as milk, cream, sugar, and flavorings and costs of packaging, labeling, and distributing the product. We specify them as  $c_{bt} = \sum_k w_{bkt}\gamma + \eta_{bt}$ , where  $w_{bt}$  are brand-specific cost shifters  $k$  and  $\eta_{bt}$  is a brand-specific component of marginal cost.<sup>6</sup> We assume that firms observe each other's marginal costs when they choose prices, i.e., marginal costs are public information.

We follow the literature in allowing part of the marginal costs to be unobservable to the researcher (Berry et al. 1995). Similar to the demand-side problem of accounting for unobserved product characteristics for absent flavors, we have to confront the problem that we do not observe the value of

<sup>6</sup>While our model readily accommodates cost shifters that are brand-flavor specific, our application to ice cream does not require this additional generality, see Section 4.1 for details.

the unobservable marginal cost components for a brand-flavor combination that is not offered. We solve this problem by assuming that the unobservable component of marginal cost varies by time and brand but not by flavor. Assuming that firms set their prices optimally (conditional on the chosen assortment), we can then recover the value of this unobservable from the pricing first-order conditions and use it to estimate the firm's marginal cost of flavors that it ultimately does not include in its assortment.

In addition, we assume firm  $b$  has a fixed cost to offer flavor  $f$  in each market  $t$ ,  $v_{bft}$ , distributed according to probability distribution function  $G_{bf}$  that differs across brands and flavors. The fixed costs of offering a flavor includes the operating costs of producing the flavor (foregone economies of scale due to smaller batches, cost of cleaning machines, labeling, etc.), the distribution costs of getting the flavor to customers (such as additional inventory and stocking costs that likely increase in the number of flavors offered), advertising costs associated with promoting the flavor (which may vary on a flavor-by-flavor basis depending on the offerings of the local competition). Other fixed costs relate to slotting fees paid by manufacturers to retailers. These are substantial in the ice cream category and, according to a recent investigation by the FTC, generally vary region-by-region and across brands and flavor offerings for any given retailer. When a manufacturer offers an additional flavor, the retailer adjusts its slotting fees to reflect opportunity costs that are significant in the frozen food area of the supermarket, where shelf space is scarce. Such opportunity costs vary over time within a market, due to, for example, product introductions in the broader ice cream or other frozen foods categories or growth of a particular frozen food category.

We assume furthermore that this fixed cost is only observed by the firm itself, but not by its competitors, i.e., it is private information. In contrast to marginal costs, which are primarily driven by observable costs for homogeneous inputs, fixed costs may depend on the efficiency of each firm's processes, proprietary strategic decisions they have made, or specific agreements between the firm and its retailers over slotting fees, the terms of which are generally private information between the parties to the agreement.

If a firm decides to offer more than one optional flavor, we assume that its total fixed costs are the sum of the individual fixed costs. This additive formulation allows us to handle multi-product firms without adding too much complexity. The drawback is that we rule out economies of scope, i.e., the fixed cost of adding a particular flavor does not change with the products that are already being offered.

Firm  $b$ 's objective is to maximize the profit from the staples and the optional flavors that it offers (as indicated by  $d_{bt} = (d_{b1t}, \dots, d_{bO_b t})$ ):

$$\max_{p_{bt}} (p_{bt} - c_{bt}) M \left( \sum_{f=1}^{O_b} s_{bft}(\cdot) d_{bft} + \sum_{f=O_b+1}^{F_b} s_{bft}(\cdot) \right) - \sum_{f=1}^{O_b} v_{bft} d_{bft}, \quad (3)$$

where  $M$  is the size of the market. To simplify the notation, we suppress  $(p_{1t}, \dots, p_{Bt}; d_{1t}, \dots, d_{Bt})$  as arguments of  $s_{bft}$ .



Differentiating yields the competitors’ first-order conditions with respect to prices:

$$p_{bt}(d_{1t}, \dots, d_{Bt}) = c_{bt} - \frac{\sum_{f=1}^{O_b} s_{bf_t}(\cdot) d_{bf_t} + \sum_{f=O_b+1}^{F_b} s_{bf_t}(\cdot)}{\sum_{f=1}^{O_b} \frac{\partial s_{bf_t}(\cdot)}{\partial p_{bt}} d_{bf_t} + \sum_{f=O_b+1}^{F_b} \frac{\partial s_{bf_t}(\cdot)}{\partial p_{bt}}}. \tag{4}$$

Solving the system of Eq. 4 yields equilibrium prices for the specific flavor offerings considered. Because we are dealing with multi-product firms, the conditions for uniqueness outlined in Caplin and Nalebuff (1991) do not necessarily hold.

We emphasize the dependency of prices on flavor offerings by writing  $p_{bt}(d_{1t}, \dots, d_{Bt})$  for equilibrium prices. We solve for equilibrium prices for the remaining possible flavor sets analogously. This gives us a vector of  $2^{\sum_b O_b}$  different prices for firm  $b$ , one for each possible bundle of flavors that could be offered. We let  $s_{bt}$  denote brand  $b$ ’s aggregate market share at time  $t$  as a function of its and its competitors’ flavor offerings,  $s_{bt} = (\sum_{f=1}^{O_b} s_{bf_t}(d_{bt}, d_{-bt}) d_{bf_t} + \sum_{f=O_b+1}^{F_b} s_{bf_t}(d_{bt}, d_{-bt}))$ , where  $d_{-bt} = (d_{1t}, \dots, d_{b-1t}, d_{b+1t}, \dots, d_{Bt})$  are the flavor offerings of all brands but  $b$ .

### 2.2 Stage 1

Each firm chooses the optimal set of flavors given its expectation of the other firms’ choices and prices under each configuration. Firm  $b$  chooses  $d_{bt} = (d_{b1t}, \dots, d_{bO_bt})$  to maximize expected profits given by:

$$\begin{aligned} E[\Pi_{bt}(d_{bt}, d_{-bt})] &= E \left[ (p_{bt}(d_{bt}, d_{-bt}) - c_{bt}) Ms_{bt}(d_{bt}, d_{-bt}) - \sum_{f=1}^{O_b} v_{bf_t} d_{bf_t} \right] \\ &= \sum_{d_{-bt}} \left( (p_{bt}(d_{bt}, d_{-bt}) - c_{bt}) Ms_{bt}(d_{bt}, d_{-bt}) \right) \Pr(d_{-bt}) - \sum_{f=1}^{O_b} v_{bf_t} d_{bf_t} \\ &= \bar{\Pi}_{bt}(d_{bt}) - \sum_{f=1}^{O_b} v_{bf_t} d_{bf_t}. \end{aligned} \tag{5}$$

The first part of the expression is the expected variable profit and the second represents the fixed costs. Since firm  $b$  does not know the fixed costs of its rivals, it cannot predict their flavor offerings with certainty. Hence, firm  $b$  forms expectations over its rivals’ flavor offerings. In particular,  $\Pr(d_{-bt})$  is the joint probability that its rivals offer the particular subset of flavors in  $d_{-bt}$ .

The marginal probability that firm  $b$  offers bundle  $d_{bt}$  is:

$$\begin{aligned} \Pr(d_{bt}) &= \Pr \left( E[\Pi_{bt}(d_{bt}, d_{-bt}) \geq E[\Pi_{bt}(d'_{bt}, d_{-bt})] \quad \forall d'_{bt} \in \{0, 1\}^{O_b} \right) \\ &= \int_{A(d_{bt})} \prod_{f=1}^{O_b} dG_{bf}(v_{bf_t}), \end{aligned} \tag{6}$$

where we let  $A(d_{bt})$  denote the set of values for  $v_{bt} = (v_{b1t}, \dots, v_{bO_bt})$  that induce the choice of flavor bundle  $d_{bt}$ :

$$A(d_{bt}) = \left\{ v_{bt} \mid \bar{\Pi}_{bt}(d_{bt}) - \bar{\Pi}_{bt}(d'_{bt}) \geq \sum_{f=1}^{O_b} v_{bft}(d_{bft} - d'_{bft}) \quad \forall d'_{bt} \in \{0, 1\}^{O_b} \right\}. \quad (7)$$

Assuming independence across firm cost shocks,  $v_{bft}$ , entails that the joint probability of observing a particular set of product offerings in the market  $(d_{1t}, \dots, d_{Bt})$  is the product of the marginal probabilities for  $d_{bt}$  defined in Eq. 6. Substituting the flavor choice probabilities defined above into each firm's expected profit yields a measure of the attractiveness of each choice as a function of the competitors' probabilistic choices. The probability that firm  $b$  chooses flavor offering  $d_{bt}$  is then the probability that the expected profit of offering  $d_{bt}$  exceeds expected profits of any other flavor offering  $d'_{bt}$ , given its conjecture of its competitors' behavior.

The expressions defined in Eqs. 5 and 6 characterize a system of  $\sum_{b=1}^B 2^{O_b}$  equations in  $\sum_{b=1}^B 2^{O_b}$  unknown flavor choice conjectures. We solve for each firm's probability of offering a given product assortment by numerically integrating over its unobserved fixed cost  $v_{bt}$ , as a function of its competitors' assortment choice probabilities. The equilibrium probabilities of offering each flavor combination solve the system of equations for all competitors, yielding the  $\sum_{b=1}^B 2^{O_b}$  flavor offering probabilities. We use a nonlinear equation solver to do so, which is a more reliable, faster solution mechanism than commonly used iterative fixed point algorithms that may not be able to reach certain solutions of the system of equations. The resulting fixed point in flavor offering probabilities is the Bayesian Nash equilibrium for the system of best response functions.

One difficulty in estimating discrete games is the possibility of a multiplicity of equilibrium assortment choices.<sup>7</sup> The literature has addressed this problem in a number of ways. Uniqueness generally ensues if one is willing to impose that the players make their assortment decisions sequentially in Stackelberg fashion. This assumption is difficult to justify in our environment both because of the frequent decision-making and the relative symmetry of the two companies in our context. Alternative two-step estimators that initially predict which equilibrium is chosen before computing profits (Bajari et al. 2006) are difficult to implement for lack of exogenous shifters of each firm's equilibrium selection mechanism. Instead as in Orhun (2006), Seim (2006) and Zhu and Singh (2006), we investigate the prevalence of multiple equilibria in our context numerically, by computing the number of assortment equilibria that arise for each of a set of grid points that span a large part of the parameter space. At the estimated parameters, we find that there is always a unique equilibrium.

<sup>7</sup>Recall from Section 2.1 that in our multi-product firm setting we also may have multiple equilibria of the pricing game.

*Two-firm-two-flavor example* As an illustration of the expected profit function and flavor choice conjectures, consider a two-firm problem ( $B = 2$ ) where each firm has a choice of two optional flavors to offer ( $O_1 = O_2 = 2$ ). To focus on the flavor choice stage, we restrict our attention to optional flavors only ( $F_1 = O_1; F_2 = O_2$ ). Each firm then chooses to offer that set of flavors that maximizes expected profit in a given market. With two flavors, there are four possible choices, offering either, both, or none of the flavors, i.e., we have  $d_b = (d_{b1}, d_{b2}) \in \{(0, 0), (0, 1), (1, 0), (1, 1)\}$ . The firms thus compare four expected profit levels and choose the flavor(s) that corresponds to the highest level of expected profit. Figure 1 illustrates the example.

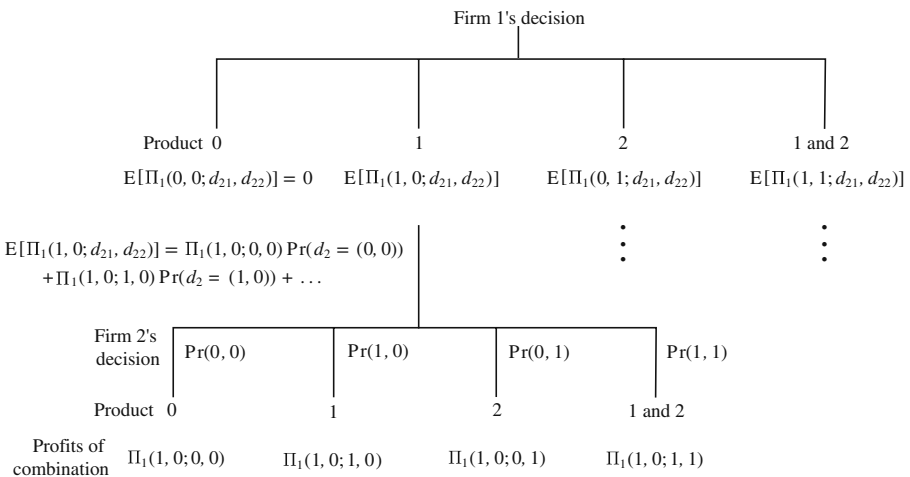
Suppressing market subscripts for ease of readability, firm 1’s expected profit if it chooses flavor 1, or  $d_1 = (1, 0)$ , is given by:

$$E[\Pi_1(1, 0, d_{21}, d_{22})] = E[(p_1(1, 0, d_{21}, d_{22}) - c_1)Ms_{11}(1, 0, d_{21}, d_{22})] - v_{11}. \tag{8}$$

Since firm 1 does not observe firm 2’s fixed cost, it has to form an expectation of firm 2’s optimal flavor choice, that is, a probability assessment of how likely it is that firm 2 chooses any one of its four possible flavor sets. Integrating over firm 2’s cost type yields expected profit of the form:

$$\begin{aligned} E[\Pi_1(1, 0, d_{21}, d_{22})] &= \sum_{d_{21}, d_{22} \in \{0,1\}} (p_1(1, 0, d_{21}, d_{22}) - c_1)Ms_{11}(1, 0, d_{21}, d_{22}) \Pr(d_{21}, d_{22}) - v_{11} \\ &= \bar{\Pi}_1(1, 0) - v_{11}, \end{aligned} \tag{9}$$

where  $p_1(1, 0, d_{21}, d_{22})$  denotes firm 1’s optimal price as determined in stage 2 if it offered flavor 1 and firm 2 offers the flavor set  $d_2 = (d_{21}, d_{22})$ , while



**Fig. 1** Expected profits

$\Pr(d_{21}, d_{22})$  denotes the probability that firm 2 offers that flavor set. The flavor offering considered by firm 1 and the possible flavors offered by firm 2 are thus reflected in both the price firm 1 charges and its expected market share. Firm 1’s expected profit for flavor 2 is computed similarly. As in the entry literature (Bresnahan and Reiss 1991), we normalize the expected profit from not offering any flavor to zero, yielding the traditional profit threshold crossing condition for offering a flavor.

The expected profit if firm 1 offers both flavors, i.e., chooses flavor set  $d_1 = (1, 1)$ , is given by:

$$E[\Pi_1(1, 1, d_{21}, d_{22})] = \bar{\Pi}(1, 1) - (v_{11} + v_{12}). \tag{10}$$

Firm 2’s expected profits are derived analogously.

Each firm’s expected profit depends on its assessment of how likely it is that its competitor offers each of its possible flavors and flavor combinations. Four flavor choice conjectures need to be formed: firm 1’s assessment of firm’s 2 probability of not offering any flavor, offering flavor 1, offering flavor 2, and offering both flavors.

Firm 1’s assessment of firm 2’s probability of offering flavor 1 is given by:

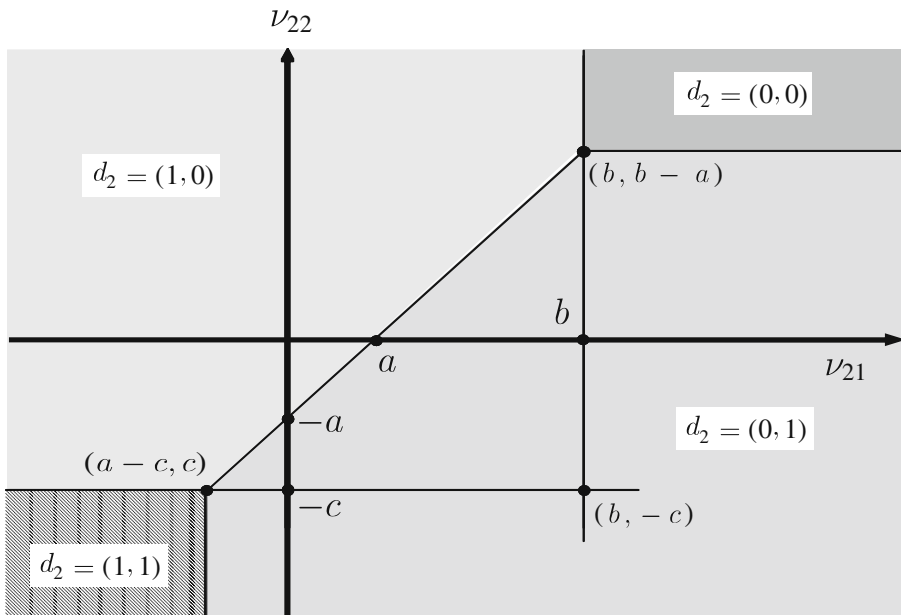
$$\begin{aligned} \Pr(d_2 = (1, 0)) &= \Pr\left(E[\Pi_2(d_{11}, d_{12}, 1, 0)] > E[\Pi_2(d_{11}, d_{12}, 1, 1)] \right. \\ &\quad \wedge E[\Pi_2(d_{11}, d_{12}, 1, 0)] > 0 \\ &\quad \left. \wedge E[\Pi_2(d_{11}, d_{12}, 1, 0)] > E[\Pi_2(d_{11}, d_{12}, 0, 1)]\right) \\ &= \Pr\left(-v_{22} < \bar{\Pi}_2(1, 0) - \bar{\Pi}_2(1, 1) \wedge v_{21} < \bar{\Pi}_2(1, 0) \right. \\ &\quad \left. \wedge v_{21} - v_{22} < \bar{\Pi}_2(1, 0) - \bar{\Pi}_2(0, 1)\right). \end{aligned} \tag{11}$$

Let the distributions of  $v_{21}$  and  $v_{22}$  be  $G_{21}$  and  $G_{22}$  with corresponding densities  $g_{21}$  and  $g_{22}$  and denote  $\bar{\Pi}_2(1, 0) - \bar{\Pi}_2(0, 1)$  as  $a$ ,  $\bar{\Pi}_2(1, 0)$  as  $b$ , and  $\bar{\Pi}_2(1, 0) - \bar{\Pi}_2(1, 1)$  as  $c$ . The probability of offering flavor 1 is thus

$$\Pr(d_2 = (1, 0)) = \Pr(-v_{22} < c, v_{21} < b, v_{21} - v_{22} < a), \tag{12}$$

which in  $v_{21} \times v_{22}$  space in Fig. 2 is the area left of  $b$  and above  $-c$  minus the triangle spanned by  $(b, -c)$ ,  $(a - c, -c)$ , and  $(b, b - a)$ . Hence,

$$\begin{aligned} \Pr(d_2 = (1, 0)) &= G_{21}(b)(1 - G_{22}(-c)) - \int_{v_{21}=a-c}^b \int_{v_{22}=-c}^{v_{21}-a} g_{22}(v_{22})dv_{22}g_{21}(v_{21})dv_{21} \\ &= G_{21}(b)(1 - G_{22}(-c)) - \int_{v_{21}=a-c}^b (G_{22}(v_{21} - a) - G_{22}(-c))g_{21}(v_{21})dv_{21} \\ &= G_{21}(b)(1 - G_{22}(-c)) + G_{22}(-c)(G_{21}(b) - G_{21}(a - c)) \\ &\quad + \int_{v_{21}=a-c}^b G_{22}(v_{21} - a)g_{21}(v_{21})dv_{21}. \end{aligned} \tag{13}$$



**Fig. 2** Regions of integration and product offerings

The above presumes  $b \geq a - c$ . If  $b < a - c$ , then the probability simplifies to:

$$\Pr(-v_{22} < c, v_{21} < b, v_{21} - v_{22} < a) = G_{21}(b)(1 - G_{22}(-c)).$$

Depending on the distribution assumed for  $G_{21}$  and  $G_{22}$ , a closed-form solution for these probability expressions may not exist. However, one can easily find the probabilities using numerical integration techniques.

The probability that flavor 2 is chosen over no flavor, flavor 1, or flavors 1 and 2 together is obtained analogously. The probability that firm 2 offers both flavors, flavors 1 and 2, is given by:

$$\begin{aligned} \Pr(d_2 = (1, 1)) &= \Pr(v_{22} < \bar{\Pi}_2(1, 1) - \bar{\Pi}_2(1, 0) \wedge v_{21} < \bar{\Pi}_2(1, 1) - \bar{\Pi}_2(0, 1) \\ &\quad \wedge v_{21} + v_{22} < \bar{\Pi}_2(1, 1)), \end{aligned} \tag{14}$$

while the probability that firm 2 chooses not to offer any flavors equals

$$\Pr(d_2 = (0, 0)) = \Pr(v_{21} > \bar{\Pi}_2(1, 0) \wedge v_{22} > \bar{\Pi}_2(0, 1) \wedge v_{21} + v_{22} > \bar{\Pi}_2(1, 1)). \tag{15}$$

Equations 11, 14–15 together with their analogues for firm 2’s assessment of firm 1’s probabilities form a system of eight equations in the eight unknown equilibrium probabilities.

The two-by-two model illustrates the computational demands of solving and estimating the model. In particular, the number of profit scenarios that have to be computed and the dimension of the fixed point go up exponentially in

number of flavors. In the above example with  $O_1 = O_2 = 2$ , there are  $2^4 = 16$  scenarios for profits. Each firm has  $2^2 = 4$  possible assortments. If we added one more flavor, say,  $O_1 = 3$  and  $O_2 = 2$ , then there would already be  $2^5 = 32$  scenarios for profits, so there is exponential growth. Firm 1 now has  $2^3 = 8$  possible assortments and firm 2 has  $2^2 = 4$  possible assortments, so the fixed-point problem we have to solve also grows exponentially in the number of flavors.

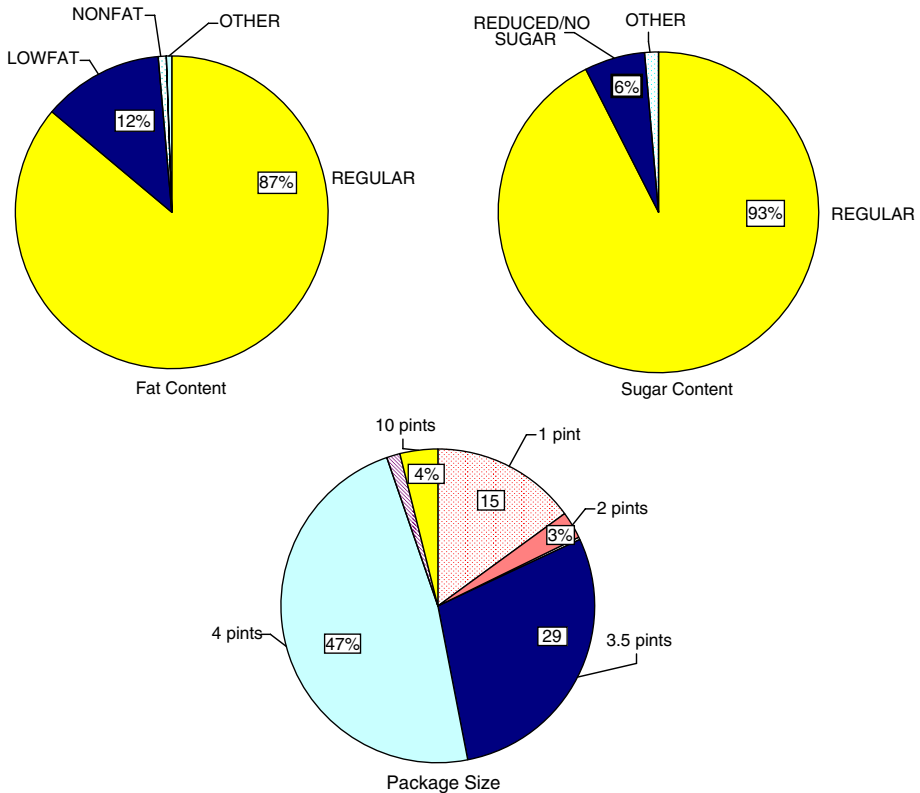
### 3 Data

The main data for our analysis were collected by Information Resources, Inc. (IRI) and cover 64 geographic markets across the U.S. for a period of 104 weeks from September 2003 to September 2005. We have weekly information on the units of ice cream sold, dollar sales, and percentage of sales sold on promotion for all UPCs in the markets. While retail prices and promotions may vary weekly, manufacturer decisions are made at a lower frequency. We are interested in the strategic decisions of manufacturers and therefore conduct the empirical analysis at the monthly level. Aggregating the data leaves us with 1,600 observations (25 months, 64 markets) for each UPC.

We declare a product available in a given market and period if there are nonzero sales for this particular brand-flavor combination. Thus, another compelling reason to aggregate to the monthly level is to avoid situations where a particular brand/ flavor is on some store shelves, but does not record any sales over a short period of time. In constructing the monthly sample, we verified that we did not lose important weekly variation in flavor availability. We computed for each of the optional flavors the number of weeks in the month that the product was available in a particular market. In approximately 97% of the market-month observations, the flavor appeared in the data in either all or none of the weeks in that month. For the remaining 3% of market-month observations, we assume that the flavor is available, even though it appears in the data in only 3 weeks (1.3% of the data), 2 weeks (0.8%), or 1 week (0.9%) in that month. Treating the flavor as unavailable in these instances did not change the empirical findings.

Ice cream is one of the most popular categories in supermarkets: 92.9% of households in the United States purchase in the category (IRI Marketing Factbook, 1993). In the general category of ice cream, there is a distinction between ice cream, frozen yogurt, sherbet and sorbet. Depending on butterfat content, ice cream is further disaggregated into superpremium, premium, and economy categories. While a half-cup serving of Häagen Dazs Vanilla Bean ice cream, a superpremium flavor, has 18 g of fat and 290 calories, the equivalent serving of Dreyers, a premium brand, has only 8 g of fat and 140 calories. Furthermore, ice cream is offered in a multitude of package sizes, fat and sugar content levels. Figure 3 presents an overview.

Regular fat ice cream accounts for 86% of ice cream sales, and only 7.5% of all ice cream sold has reduced or no sugar content. The most popular size



**Fig. 3** Dollar shares of ice creams by fat content, sugar content, and package size

is 4 pints with about 48% of all sales, followed by the closely related 3.5 pint size with 29%,<sup>8</sup> and 1 pint with 15%. Most of the superpremium ice cream brands such as Ben & Jerry’s and Häagen Dazs are sold almost exclusively in the smaller, 1 pint tubs, whereas the other brands are usually sold in larger sizes.

To illustrate the model developed in this paper, we focus our attention on non-diet ice cream (i.e., full fat and regular sugar) in the premium category, and in particular on the decisions of the two leading national brands—Breyers and Dreyers—pertaining to their assortment of vanilla flavors in the most popular family size of 3.5/4 pints. Vanilla flavors represent up to one-third of total category sales. Our data reveal a total of 22 different varieties of vanilla ice cream, involving subtle differences in the ingredients. For example, Vanilla

<sup>8</sup>Some brands, like Breyers, replaced their 4 pint packages with 3.5 pint ones without changing the unit price. This strategy of increasing the per-ounce price is fairly common among manufacturers of frequently purchased consumer packaged goods because it is not as obvious to consumers as a change in the unit price.

**Table 1** Market share rank of manufacturers across the 64 regional ice cream markets

Market share rank	Number of markets					Total
	1st	2nd	3rd	4th	5th–10th	
Breyers	14	21	23	5	1	64
Dreyers	5	11	14	20	14	64
Deans	0	0	0	1	10	11
Friendly	1	0	3	0	11	15
Hiland	0	2	0	0	5	7
Hood	1	2	0	2	3	8
Kemps	1	1	0	0	8	10
Mayfield	1	1	2	2	6	12
Pet	0	0	2	4	5	11
Prairie Farms	1	0	1	0	10	12
Tillamook	0	1	0	2	0	3
Turkey Hill	1	1	1	1	10	14
United Dairy	0	1	1	1	7	10
Wells Blue Bunny	3	0	4	6	15	28
Yarnells	1	0	0	2	2	5
Private Label	30	15	10	5	4	64
Other	5	8	3	13	32	61

Bean flavors contain visible specks of vanilla, while French Vanillas have a higher egg content. The most popular vanilla varieties in the data are “French Vanilla,” “Vanilla,” “Vanilla Bean,” “Natural Vanilla,” and “Extra Creamy Vanilla.” We do not include flavors with substantial additional ingredients or flavorings, such as Cherry Vanilla or Vanilla Fudge. Because manufacturers do not “specialize” in vanilla, but the number of vanilla flavors is highly correlated with the total number of flavors offered, an analysis of the vanilla market should shed considerable light on the firms’ product assortment decisions in general.

Table 1 presents a market structure snapshot across the 64 geographic regions in our data set. For the purposes of this analysis, we have classified brands that do not have at least 5% market share in at least 5% of the markets (i.e., three markets) as “other.” For each brand, the table presents the number of markets out of 64 for which the brand has each particular market share position. Note that the entries for “Private label” and “Other” in Table 1 are aggregates of all the private label (other brands) that are available in different regions and in different stores within a region. Hence, their competitive position is overstated.<sup>9</sup>

Breyers and Dreyers<sup>10</sup> are the only premium brands that are truly national and have a presence in all markets. However, given the production requirements and distribution economics associated with ice cream, many regional manufacturers established in the early and middle parts of the twentieth

<sup>9</sup>Because it is difficult to determine how their flavors map to the other brands’ vanilla offerings based on the names, we include the private label and other brands in the outside good.

<sup>10</sup>Dreyer’s ice cream is sold under the brand name Edy’s in the Midwestern and Eastern United States after Kraft (the makers of Breyers) raised objections in 1985.



century have maintained their market position through the present. Brands such as Hood in the Northeast, Blue Bunny in the Midwest and the Southeast, and Tillamook in the Pacific Northwest have substantial sales; indeed, they are holding the top share in several markets. In addition, sales of private label brands vary in importance from one region to the next. The data in Table 1 suggest that Breyers and Dreyers face very different competitive conditions across the various geographic markets in which they compete.

Table 2 focuses on the vanilla flavors offered by the regional manufacturers, listing the number of vanilla flavors offered by each across the geographic markets and over the 25 months in our sample period. The first column in Table 2 reports the maximum number of market-month observations, obtained by multiplying the number of geographic markets in which the regional brand has a presence by the number of months. Columns two and three indicate the maximum number of flavors that a brand ever offers in our sample period and the number of markets in which the brand is ever present, respectively. With the exception of Kemps and Hiland, the regional players tend to offer fewer vanillas than Breyers and Dreyers. The remaining columns in the table report how frequently the brands carry a full assortment (or a subset) of their available flavors. Most of the regional brands exhibit relatively little variety in their product assortments across markets and over time—for ten of the 13 brands, the modal number of flavors offered in the data occurs more than two-thirds of the time. We use this evidence to support our assumption that the regional brands do not act strategically with respect to product portfolio choice, and that the national players compete market-by-market taking the flavors offered by regional competitors to be exogenous. As such, this assumption provides an additional source of exogenous variation that can be helpful in identification of the model parameters.

Importantly, there is variation in the availability of some of the vanilla flavors for Breyers and Dreyers across geographic regions and months. Table 3 provides the details. Natural Vanilla, French Vanilla and Extra Creamy Vanilla for Breyers and Vanilla, French Vanilla and Vanilla Bean for Dreyers are (almost) always available and can thus be treated as staples. Breyers Homemade Vanilla and Dreyers Natural Vanilla, Double Vanilla and Vanilla Custard are the optional flavors, whose offering varies widely by markets and periods. Double Vanilla was introduced towards the end of our sample period, so it is a somewhat special case. Since we do not model the nationwide rollout of a new product, we drop it from the product-choice analysis. We also drop Breyers Vanilla because it only appears in two markets and a few months.

Table 4 illustrates the distribution of the market shares of Breyers and Dreyers' vanilla flavors conditional on them being offered, along with the percentage of market-months in which they are offered. Given that all flavors have the same price and marginal cost of production, the market share of a flavor is indicative of its profitability (prior to fixed costs) within the brand. A comparison of average market shares and availabilities shows that more profitable flavors tend to be offered more often. The correlation between average market share and the percentage of months offered is 0.5619. Among

**Table 2** Distribution of flavor availability for regional manufacturers across markets/months in the data set

	Market-month obs.	No. of flavors	No. of markets	Percent of market-months in which # of flavors is offered						
				0	1	2	3	4	5	6
Wells Blue Bunny	700	4	28	0.1	-	-	27.7	72.1	-	-
Friendly	375	3	15	-	-	14.9	85.1	-	-	-
Turkey Hill	350	3	14	-	-	2	98	-	-	-
Prairie Farms	300	3	12	1	-	9.7	89.3	-	-	-
Mayfield	300	4	12	-	-	1.7	6	92.3	-	-
Deans	275	4	11	-	-	66.9	24	9.1	-	-
Pet	275	3	11	1.8	-	0.7	97.5	-	-	-
Kemps	250	6	10	3.2	4	22.8	10	11.6	20.8	27.6
United Dairy	250	4	10	-	1.6	16.4	80.4	1.6	-	-
Hood	200	3	8	-	-	24	76	-	-	-
Hiland	175	6	7	0.6	2.3	2.3	5.1	46.9	18.3	24.6
Yarnells	125	4	5	10.4	1.6	4.8	36.8	46.4	-	-
Tillamook	75	2	3	-	-	100	-	-	-	-

**Table 3** Percentage of months in which a flavor is available in a geographic market

Market	Breyers				Dreyers						
	Vanilla	Extra creamy vanilla	French vanilla	Homemade vanilla	Natural vanilla	Vanilla	French vanilla	Natural vanilla	Double vanilla	Vanilla bean	Vanilla custard
Albany, NY	0	100	100	96	100	100	100	0	27	100	0
Atlanta, GA	0	100	100	100	100	100	100	65	27	100	65
Baltimore/	4	100	100	100	100	100	100	88	27	100	42
Washington	0	100	100	100	100	100	100	50	27	100	38
Birmingham/											
Montgom											
Boise, ID	0	100	100	54	100	100	100	50	19	100	31
Boston, MA	0	100	100	65	100	100	100	0	27	100	0
Buffalo/Rochester	0	100	100	96	100	100	100	50	27	100	0
Charlotte, NC	0	100	100	100	100	54	100	73	27	100	77
Chicago, IL	0	100	100	100	100	100	100	77	31	100	35
Cincinnati/Dayton	0	100	100	100	100	100	100	65	27	100	23
Cleveland, OH	0	100	100	100	100	100	100	73	23	100	42
Columbus, OH	0	100	100	100	100	100	100	50	23	100	88
Dallas/Ft Worth	0	100	100	100	100	100	100	100	27	100	88
Denver, CO	0	100	100	100	100	100	100	88	27	100	92
Des Moines, IA	0	100	100	100	100	100	100	54	27	100	23
Detroit, MI	15	100	100	100	100	100	100	42	23	100	38
Grand Rapids, MI	0	100	100	0	100	100	100	35	23	100	12
Green Bay, WI	0	100	100	100	100	100	100	81	27	100	50
Harrisburg/	0	100	100	100	100	100	100	54	27	100	0
Seranton											
Hartford/	0	100	100	96	100	100	100	0	27	100	0
Springfield											
Houston, TX	0	100	100	100	100	100	100	100	27	100	85
Indianapolis, IN	0	100	100	100	100	100	100	73	27	100	58
Jacksonville, FL	0	100	100	77	100	100	100	81	27	100	81
Kansas City, KS	0	100	100	100	100	100	100	62	27	100	35
Knoxville	0	100	100	100	100	81	100	58	27	100	46

**Table 3** (continued)

Market	Breyers				Dreyers						
	Vanilla	Extra creamy vanilla	French vanilla	Homemade vanilla	Natural vanilla	Vanilla	French vanilla	Natural vanilla	Double vanilla	Vanilla bean	Vanilla custard
Little Rock, AR	0	100	100	100	100	85	65	0	0	73	0
Los Angeles, CA	0	100	100	100	100	100	100	100	27	100	100
Louisville, KY	0	100	100	35	100	100	100	92	27	100	77
Memphis, TN	0	100	100	100	100	100	100	54	4	100	4
Miami/Ft Lauderdale	0	100	100	100	100	100	100	81	27	100	81
Milwaukee, WI	0	100	100	100	100	100	100	81	27	100	62
Minneapolis/St Paul	0	100	100	100	100	100	100	69	27	100	35
Mississippi	0	100	100	100	100	100	100	0	19	100	0
Nashville, TN	0	100	100	100	100	65	100	27	27	100	0
New England	0	100	100	100	100	100	100	0	27	100	0
New Orleans/Mobile	0	100	100	81	100	100	100	0	27	100	0
New York	4	100	100	100	100	100	100	100	27	100	92
Oklahoma City, OK	0	85	100	0	100	100	100	0	27	27	0
Omaha, NE	0	100	100	100	100	100	100	50	27	100	12
Orlando, FL	0	100	100	88	100	100	100	88	27	100	81
Peoria/Springfield	0	100	100	100	100	100	100	81	27	100	50
Philadelphia, PA	0	100	100	100	100	96	100	100	27	100	81
Phoenix/Tucson	0	100	100	100	100	100	100	100	27	100	58
Pittsburgh, PA	0	100	100	100	100	100	100	42	0	100	0

Portland, OR	0	100	100	46	100	100	100	100	100	81	27	100	31
Providence, RI	0	100	100	88	100	100	100	100	100	0	27	100	0
Raleigh/Greensboro	0	100	100	100	100	100	100	100	100	77	27	100	85
Richmond/Norfolk	0	100	100	100	100	100	100	100	100	81	27	100	0
Roanoke, VA	0	100	100	100	100	54	100	100	100	46	27	100	46
Sacramento, CA	0	100	100	100	100	100	100	100	100	100	27	100	88
Salt Lake City, UT	0	100	100	62	100	100	100	100	100	65	27	100	46
San Ant/Corpus Chr	0	85	100	100	100	100	100	100	100	100	27	100	92
San Diego, CA	0	100	100	100	100	100	100	100	100	100	27	100	85
San Fran/Oakland	0	100	100	100	100	100	100	100	100	100	27	100	77
Seattle/Tacoma	0	100	100	0	100	100	100	100	100	85	27	100	38
South Carolina	0	100	100	100	100	100	100	100	100	77	27	100	50
Spokane, WA	0	100	100	0	100	100	100	100	100	81	27	100	54
St. Louis, MO	0	100	100	100	100	100	100	100	100	88	27	100	42
Syracuse, NY	0	100	100	85	100	100	100	100	100	54	27	100	0
Tampa/St Petersburg	0	100	100	96	100	100	100	100	100	85	27	100	85
Toledo	0	100	100	100	100	100	100	100	100	85	27	100	65
Tulsa, OK	0	85	100	0	100	100	100	100	100	0	27	69	0
West Tex/New Mex	0	100	100	73	100	100	100	100	100	100	27	100	92
Wichita, KS	0	100	100	100	100	100	100	100	100	31	23	100	19

**Table 4** Market share of Breyers and Dreyers flavors conditional on offering

	Mean	Std. dev.	Min.	Max.	Percent of market months offered
<b>Breyers</b>					
Extra creamy vanilla	0.0831	0.0329	0.0054	0.1541	99.30%
French vanilla	0.1469	0.0322	0.0722	0.2287	100.00%
Homemade vanilla	0.0344	0.0348	0.0004	0.1508	86.50%
Natural vanilla	0.3765	0.1046	0.1817	0.5618	100.00%
Vanilla	0.0102	0.0177	0	0.0307	0.40%
<b>Dreyers</b>					
Double vanilla	0.0392	0.0201	0.0004	0.0868	25.20%
French vanilla	0.0921	0.0383	0.0223	0.1895	99.50%
Natural vanilla	0.0295	0.0273	0.0018	0.1365	62.00%
Vanilla	0.1176	0.0788	0.0013	0.3026	97.40%
Vanilla bean	0.1156	0.0541	0.0034	0.2532	98.00%
Vanilla custard	0.0078	0.0073	0.0001	0.0382	43.40%

optional flavors, Dreyers Vanilla Custard has the lowest market share (0.0078) and is offered the least frequently (43.40%) while Breyers Homemade Vanilla has the highest market share (0.0344) and is offered the most frequently (86.50%).

These correlations, albeit based on small samples of flavors, provide some evidence that the role of unobserved demand shocks that affect both the availability and the market share of a flavor is limited in our application. Such demand shocks could result in a negative correlation between shares and availabilities due to rarely offered flavors capturing high market shares when offered.

**Table 5** Market shares and prices of brands included in the analysis

	Market share		Price	
	Average	Std. dev.	Average	Std. dev.
Breyers	0.2118	0.0983	\$3.78	\$0.49
Dreyers	0.1379	0.0873	\$3.43	\$0.51
Deans	0.0236	0.0320	\$3.64	\$0.74
Friendly	0.0838	0.0724	\$3.46	\$0.62
Hiland	0.0563	0.0907	\$3.53	\$0.54
Hood	0.0898	0.1052	\$2.80	\$0.51
Kemps	0.0365	0.1054	\$4.01	\$1.01
Mayfield	0.0812	0.1080	\$3.90	\$0.66
Pet	0.0484	0.0562	\$3.05	\$0.54
Prairie Farms	0.0393	0.0739	\$3.25	\$0.54
Tillamook	0.1184	0.0491	\$4.14	\$0.48
Turkey Hill	0.1090	0.1049	\$3.16	\$0.54
United Dairy	0.0502	0.0513	\$3.91	\$0.87
Wells Blue Bunny	0.0710	0.1002	\$3.69	\$0.75
Yarnells	0.1201	0.1458	\$3.80	\$0.52

Note: Market shares are with respect to the inside goods only and conditional on the brand being present in the market. Numbers do not add to 1 because market shares are conditional and private label and small brands are not reported

Table 5 presents a summary of the market shares and prices for the brands included in the demand analysis. Breyers is the clear market leader with an average market share of 21%, followed by Dreyers with a market share of almost 14%. Tillamook, Turkey Hill and Yarnells have also sizeable shares in their markets, reflecting their position as strong—albeit small—regional players. The brands vary in their pricing strategies. Breyers and Dreyers occupy the middle ground, while many regional players have lower (Hood, Pet, Turkey Hill) or higher (Tillamook, Kemps) average prices.

As mentioned above, the IRI data include measures of units sold and revenue (with which we calculate average prices) for each UPC in each market. To estimate the econometric model, we complement these data with information drawn from a variety of sources. Table 6 outlines the variables, their sources,

**Table 6** Summary of non-IRI data

Variable	Source	Level of variation	Mean	Std. dev.
<i>Demographic and demand variables</i>				
Population	2000 U.S. Census	Market	3,164,796	3,044,238
% African American	2000 U.S. Census	Market	0.124	0.097
Avg. household size	2000 U.S. Census	Market	2.560	0.141
Per capita income	2000 U.S. Census	Market	21,831.210	2,917.420
% under 18	2000 U.S. Census	Market	0.257	0.019
% 18–24 years	2000 U.S. Census	Market	0.098	0.011
% 25–44 years	2000 U.S. Census	Market	0.306	0.018
% 45–64 years	2000 U.S. Census	Market	0.219	0.013
% over 65	2000 U.S. Census	Market	0.121	0.024
% Males	2000 U.S. Census	Market	0.489	0.006
Temperature	NOAA	Market & Month	67.454	17.245
<i>Measures of various input costs</i>				
Commercial paper rate	Datastream	Month	2.035	0.951
Cream II (\$ per lb)	Dairy Market News	Month	2.247	0.405
Nonfat dry milk (\$ per lb)	Dairy Market News	Month	0.926	0.092
Sugar (cents per lb)	Bloomberg	Month	9.039	1.560
Manufacturing wage (NAICS 3115)	Bureau of Labor Statistics	Month	688.407	17.316
Fuel price (\$ per gallon)	Energy information administration	Market & Month	147.471	31.746
Distance from closest production facility to market (Breyers)	Own calculations	Market & Firm	283.815	200.063
Distance from closest production facility to market (Dreyers)	Own calculations	Market & Firm	321.364	207.822
<i>Market structure—complementary industries</i>				
# of Wal-Mart stores	Own calculations	Market	26.594	17.112
Local distributors (NAICS 424330)—population per establishment	County business patterns	Market	152,667	56,801
Local distributors (NAICS 424330)—share of employment in ctop-4 firms	County business patterns	Market	0.492	0.201

and the level of aggregation. For example, the data that we have on individual demographics are from the 2000 Census—these data vary across geographic markets, but not over time. We have monthly information on several input cost measures; some (e.g., fuel prices) also vary across geographic markets while others (e.g., cost of capital represented by the commercial paper rate) do not. We have calculated the distance from each geographic market to the nearest production facility for Breyers and Dreyers. These are the only data that vary across the manufacturers (but are the same in each time period).

The panels of Table 6 are split based on the way we use these additional variables. The top section of the table includes market demographics and temperature; we think that these may be associated with ice cream demand. There may be differences in input costs as well—the variables in the second panel possibly influence the costs of manufacturing and/or distributing the product. In the bottom panel, we have included some statistics on the market structure of complementary industries that may affect the ice cream market on either the supply or the demand side. Prices and measured quantities sold in supermarkets may be affected if there are more Wal-Mart stores in the local market. Since manufacturers rely on distributors that are specifically equipped to transport frozen dairy products, the market structure of these distributors may also be relevant.

## 4 Empirical strategy

Below we first give details on the specification of our empirical model, which differs from the model presented in Section 2 by fully accounting for regional and private label brands in the demand estimation. We thus no longer assume that exactly the same brands appear in both stages of the game. We then discuss the estimation procedure in more detail.

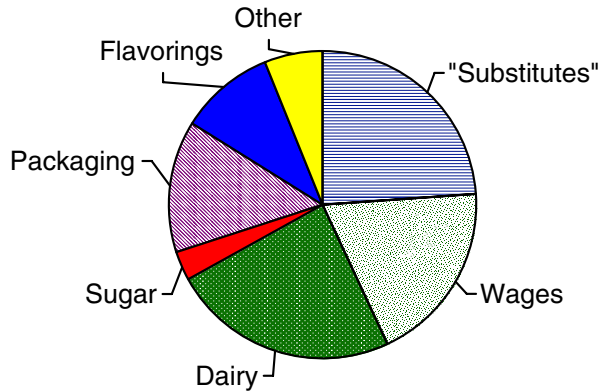
### 4.1 Econometric specification

We define the potential market size based on the total supermarket sales of regular, 3.5/4 pint ice cream in each market and calculate the shares of the competing brands relative to this size  $M$ .<sup>11</sup> While we consider only Breyers and Dreyers at the product-choice stage, our demand model also includes private labels and regional players. The utility of these alternatives is specified in the same way as for the branded flavors in Eq. 1. We assume that the prices for these alternatives are set in a non-strategic way, independent of the product offerings or prices of Breyers and Dreyers and therefore substitute their observed prices in the demand model. Because the identity of the smaller

<sup>11</sup>We tried several alternative definitions for  $M$ . In general, definitions based on ice cream consumption, which include non-supermarket ice cream sales (e.g., sales in ice cream parlors and specialty stores) were too broad to produce reasonable empirical results. Different definitions based on supermarket sales did, however, yield similar estimates to those reported here.



**Fig. 4** Breakdown of manufacturing cost in the ice cream industry. 1997 Economic Census



players changes from market to market, we use a separate demand model for each market that includes the available flavors in that market.

On the demand side, the observed characteristics of flavor  $f$  offered by brand  $b$  in market  $t$ ,  $X_{bft}$ , include a brand constant, a flavor constant, and the price. We allow for random coefficients on the price and the brand constants for Breyers and Dreyers.<sup>12</sup> For the outside good we include in  $X_{00t}$  the market's monthly average temperature, monthly dummies and indicators for US regions (Northeast, Midwest, and South), the market population's breakdown by gender (%male), age (%18–24, %25–44, %45–64, and %65 and above), and race (%African American), as well as the average household size, per capita income, and lastly the number of Wal-Mart stores operating in the market, capturing one of the primary alternatives to supermarket shopping. This rich set of demographics that vary city-by-city affects demand for all inside goods relative to the outside good. Due to the random coefficients, these demographics also affect the relative market shares of Breyers and Dreyers. Additional factors that explain differences in the prevalence of Breyers and Dreyers across cities include differences in flavor offerings across cities and market-specific marginal cost shifters that result in differences in prices across cities.

On the cost side, as evident from Fig. 4, the flavor-specific “flavorings” component of total cost is relatively small; thereby justifying our assumption that marginal costs are constant across flavors offered by a given firm. Further, the primary cost components—dairy, packaging, and wages—are likely constant within regions and across manufacturers, consistent with our notion that these costs are common knowledge across players. In our empirical specification, we include as marginal cost shifters in  $w_{bt}$  a brand-specific constant, transportation costs (distance between the market and a brand's closest distribution center,

<sup>12</sup>For comparison purposes, we have also estimated a homogeneous logit demand model. To make this specification more flexible, we replaced the brand and flavor constants by brand-flavor constants.

average fuel cost), input prices (sugar, cream, dry milk, the local average weekly wage, and the commercial paper rate), and distribution costs (measures of market structure in local distribution: population per local distributor and share of employment in the top 4 local distributors).

The inclusion of the regional players in the demand model results in differences in variable profit for a particular optional flavor offered by Breyers or Dreyers across markets. Variable profits depend on marginal cost shifters, demographics, and the entire set of rivals' products. Since regional players and their offerings differ across markets, the differences in the degree of substitution between the regional players' flavors and those of the national players result in differences in the profitability of a particular flavor that results in different flavor offering probabilities across markets.

We assume that the flavor-specific fixed offering costs are drawn from a log-normal distribution with brand-flavor specific scale and shape parameters and a location parameter of zero, i.e.,  $G_{bf} = \ln(\bar{v}_{bf}, \sigma_{bf}^2)$ , where  $\bar{v}_{bf}$  and  $\sigma_{bf}^2$  denote the parameters of the normal distribution of the log of  $v_{bf}$ . We use the log-normal distribution as a flexible distribution that ensures positive fixed costs and that allows us to compute in a tractable fashion the distribution of fixed costs when firms offer both flavors and the fixed costs equal to the sum of the two flavors' fixed costs. The mean of the distribution,  $\exp(\bar{v}_{bf} + \frac{1}{2}\sigma_{bf}^2)$ , captures all factors that determine product assortment choices that are not accounted for in the average estimate of variable profits, while its standard deviation captures deviations from the average decision across markets/months.

## 4.2 Estimation

For a given set of parameters for the demand and pricing equations, the second stage of the model yields predicted market shares for the flavors offered in a given market. These market share values are then scaled by our estimates of market size  $M$ . In addition, the pricing stage generates estimates of marginal costs that the observed prices and the assumption of Bertrand-Nash pricing imply.<sup>13</sup> These marginal costs flow into the first-stage profit function to determine profits of all potential assortment choice combinations. The first stage then focuses on determining an equilibrium probability of each potential flavor being offered in a given market.

We observe each brand's actual assortment decisions,  $d_{bt}^o = (d_{b1t}^o, \dots, d_{bO_{bt}}^o)$ , the actual market share,  $s_{bft}^o$ , for all flavors  $f$  that are part of the assortment chosen in the first stage (including both staples and optional flavors), and the price,  $p_{bt}^o$ , charged by the brand for all flavors in the chosen assortment (recall that the price for a given brand is uniform across flavors). To estimate the parameters of the model, we match firms' behavior in terms

<sup>13</sup>The data for one of the markets, Little Rock, AR, was suspect because Dreyers was not at all present for a couple of quarters. For this reason we could not back out marginal cost as described, and we drop this market from the analysis.

of these three variables to the model predictions for these variables using simulated method-of-moments estimators (Hajivassiliou and McFadden 1998).

The first set of moment conditions matches the expected market shares as defined in Eq. 2 to the ones observed in the data. We define market share prediction errors, denoted by the  $F_b$ -dimensional row vector  $e_{b,t}^s$  with elements

$$e_{b,t}^s = \begin{cases} \{s_{bft}^o - s_{bft}(d_{1t}^o, \dots, d_{Bt}^o)\}d_{bft}^o & \text{if } f = 1, \dots, O_b, \\ \{s_{bft}^o - s_{bft}(d_{1t}^o, \dots, d_{Bt}^o)\} & \text{if } f = O_b + 1, \dots, F_b, \end{cases} \tag{16}$$

where predicted market shares are conditional on actual assortment decisions. The difference between observed and expected market shares is due to sampling error. Our first set of moment conditions is thus the sum of squared deviations of predicted from observed market shares:

$$Q_{1b}(\theta) = \sum_t e_{b,t}^s (e_{b,t}^s)'$$

Second, we exploit the assumption that observed and unobserved components in the pricing first-order condition, Eq. 4, are uncorrelated. We use Eq. 4 to back out the unobserved marginal cost contribution,  $\eta_{b,t}^o$ , that sets predicted prices equal to the observed prices for the chosen bundle. We then interact it with observed marginal cost shifters in a moment condition. Note that we cannot use a moment condition matching the predicted prices to the actual ones for the estimation because we already exploit the pricing first-order conditions to back out the cost shock. We use weights to combine the moment conditions pertaining to brand  $b$  into the least-squares objective:

$$Q_{2b}(\theta) = \eta_b' W_b (W_b' W_b)^{-1} W_b' \eta_b,$$

where  $\eta_b$  is a  $T \times 1$  vector of marginal cost shocks for brand  $b$  and  $W_b$  is a  $T \times K$  matrix of the exogenous marginal cost shifters  $w_{b,t}$  (e.g., manufacturer transportation cost, price of milk and sugar for brand  $b$ ). We obtain marginal cost estimates from minimizing this objective function.

Our third and last set of moment conditions results from matching the firms' actual assortment choices to the ones predicted by the model. Formally, we define assortment prediction errors (the difference between the predicted choice probability and the actual assortment choice), denoted by the  $2^{O_b}$ -dimensional row vector  $e_{b,t}^a$  with elements:

$$e_{b,t}^a = 1(d_{b,t}^o = d'_{b,t}) - \Pr(d'_{b,t}) \quad \forall d'_{b,t} \in \{0, 1\}^{O_b}, \tag{17}$$

where  $1(\cdot)$  is the indicator function. We match observed to predicted choice probabilities:

$$Q_{3b}(\theta) = \sum_t e_{b,t}^a (e_{b,t}^a)'$$

We obtain fixed-cost estimates by minimizing this objective function.

Reflecting the two-stage nature of the game, this last stage of the estimation takes the demand and marginal cost estimates as inputs. We break up the

estimation problem into smaller pieces. First we obtain the demand parameters. Given the demand parameters, we estimate the marginal cost coefficients. Finally, with both demand and marginal cost parameters in hand, we obtain the fixed cost.<sup>14</sup>

To calculate the objective function we draw a large number of fixed costs ( $S = 5,000$ ) and obtain a nonparametric estimate of the frequency with which a firm offers a particular assortment given its beliefs about its rival's offerings. Because the frequency count can jump even for small changes in the parameter values, the objective function is discontinuous. Therefore we use a Nelder-Mead simplex algorithm for the minimization. In addition, we bootstrap standard errors. To this end, we create 100 artificial data sets of the same size as our original data set by drawing observations with replacement from our original data set. We then apply our estimator to each of the artificial data sets. The empirical distribution of the estimates on the artificial data sets then approximates the distribution of our estimator.

*Monte Carlo experiments* We tested the ability of our estimation procedure to recover the fixed costs using Monte Carlo simulations. We generate 100 replications of a simulated data set of 256 potential markets. We work with a very simple market structure scenario: there are two competitors and each has the option to offer zero, one, or two flavors. Demand is homogenous logit and there are brand-flavor fixed effects. The firms are constrained to charge the same price for both products if they offer both varieties, similar to the current practice in the ice cream industry. We generate demand and cost shifters in the form of temperature and manufacturer-specific transportation costs by drawing from the empirical distribution of these variables in our data.

Given the distribution of the unobservables, the exogenous characteristics, and a reasonable, fixed set of parameters, we calculate the optimal choices of the operating firms with respect to the products they offer and the price they charge, as well as the corresponding market share for each offered product. Then we proceed to estimate the parameters of the model to see if we recover the true values that generated the predictions. Even when we start with values that are quite far from the truth (each estimation run is based on starting values of 0.0001 for all parameters), our procedure yields average estimates that are very close to the true values.<sup>15</sup>

<sup>14</sup>The main advantage of estimating the parameters sequentially is savings in computing time. The computationally expensive component of the estimating problem is the product choice stage, in particular since we bootstrap standard errors. The separate estimation of the fixed cost, price, and demand sides reflects the information available to firms at different stages of the model. We assume, for example, that firms learn their competitors' flavor choices before making a price choice. As such, estimating the parameters separately yields consistent, albeit inefficient parameter estimates.

<sup>15</sup>Results available from the authors upon request.

## 5 Estimation results

### 5.1 Demand and Marginal Cost

Table 7 presents the parameters of the demand and pricing equations for the ice cream data. As a baseline, we include a homogeneous logit model that allows for separate brand-flavor dummies for all offered flavors (not reported in the table). The second column in Table 7 contains our main random-coefficients demand specification. The majority of estimated coefficients is stable across the two specifications. The demand for each flavor falls in the brand's price, with an implied elasticity ranging from  $-2.01$  to  $-1.52$  for the homogeneous logit model and  $-2.02$  to  $-1.40$  for the random-coefficients logit model, which is comparable to other frequently purchased consumer goods in mature categories.

In addition we control for variables that shift demand for all inside goods relative to the outside option such as market demographics and time dummies. Our estimates indicate that there is statistically significant seasonal and geographic variation in the demand for vanilla flavors in supermarkets. In addition, the demographic composition of a market has a pronounced impact on demand: Markets with a higher percentage of males and African Americans tend to have higher demand for vanilla ice cream (lower demand for the outside good).

Most aggregate marginal cost shifters, such as the price of sugar and dry milk, are not statistically significant, possibly due to the lack of variation across markets and brands. As expected, marginal costs increase in brand-specific transportation (distance to the nearest distribution facility) and fuel costs, as well as the proxies for the size and density of the local distribution network.

### 5.2 Fixed Cost

Reasonable starting values for the flavor fixed cost distributions should reflect variation in actual fixed costs. To determine the likely magnitude for these costs, we use the following procedure. Beginning with initial estimates for demand and marginal cost, we calculate variable profits for each possible offering. We then loop through flavors and use data on whether the flavor is offered to infer bounds on fixed costs that would make the observed flavor offering decision optimal ex-post. This procedure differs from our estimation below in that we recover fixed costs consistent with ex-ante optimality. We use the midpoint of each flavor's average range as a starting value for mean fixed cost and the average standard deviation of the lower and upper bounds as a guess at the distribution's standard deviation. Draganska et al. (2007) contains a detailed description of the computation of starting values.

Table 8 presents estimates of the distribution parameters of the underlying normal distribution of the log of fixed costs using the random-coefficients logit demand model, while Table 9 contains the associated mean, standard deviation, and median for the level of fixed costs for each of the three optional

**Table 7** Demand and marginal cost estimates

	Homogeneous logit model		Random coefficients logit model	
	Estimate	Std. error	Estimate	Std. error
<i>Demand—inside flavors</i>				
Price	-0.5019	0.0209	-0.5070	0.0264
Price SD			0.0623	0.0158
Breyers constant			0.7958	0.1853
Breyers SD			0.1081	0.0813
Dreyers constant			-0.5733	0.1791
Dreyers SD			0.1455	0.1280
<i>Demand—outside option</i>				
Temperature	0.0009	0.0011	0.0087	0.0018
January dummy	-0.0080	0.0448	0.0048	0.0088
February dummy	0.0880	0.0384	0.0544	0.0591
March dummy	0.1193	0.0441	-0.0765	0.0603
April dummy	0.0762	0.0448	-0.2425	0.0466
May dummy	0.1198	0.0496	-0.2559	0.0608
June dummy	0.1121	0.0560	-0.3904	0.0643
July dummy	0.1134	0.0545	-0.4421	0.0674
August dummy	0.1306	0.0641	-0.2518	0.0719
September dummy	0.0745	0.0580	-0.3650	0.0666
October dummy	0.0689	0.0479	-0.1748	0.0546
November dummy	-0.0747	0.0453	-0.0227	0.0363
Northeast dummy	0.6097	0.0449	-0.5940	0.0483
Midwest dummy	0.3090	0.0365	-0.4844	0.0371
South dummy	0.4451	0.0418	-0.4895	0.0505
% African American	-1.1401	0.1566	-0.1863	0.1614
% Male	-9.6801	1.7030	-21.3949	0.5949
% 18–24 old	-4.4395	1.4749	1.6635	1.5779
% 25–44 old	-3.7634	1.5196	-3.6254	1.2495
% 45–64 old	-2.9410	1.3352	-2.2134	1.3165
% 65 and older	-8.0026	0.9295	-1.7608	0.8625
Average household size	0.2340	0.1461	-0.7608	0.0955
Per capita income	-0.0001	1.1E-05	0.0001	6.7E-06
Wal-Mart	0.0015	0.0007	-0.0041	0.0009
<i>Marginal cost</i>				
Breyers constant	5.2320	0.9258	4.5881	0.9104
Dreyers constant	4.8952	0.9254	4.2710	0.9099
Transportation cost	0.0002	3.2E-05	0.0002	3.2E-05
Sugar price	-0.0027	0.0252	-0.0057	0.0244
Wage	-0.0037	0.0014	-0.0040	0.0013
Commercial paper	-0.0108	0.0600	-0.0035	0.0587
Cream II price	-0.1180	0.0512	-0.1180	0.0503
Dry milk price	-0.2712	0.2043	-0.2916	0.2031
Distributor employment	0.4236	0.0584	0.4578	0.0583
Population per distributor	-2.0E-06	1.8E-07	-2.0E-06	1.8E-07
Fuel cost	0.0029	0.0007	0.0031	0.0007

Brand-flavor constants (homogeneous logit) and majority of brand and all flavor constants (random coefficients logit) omitted for brevity

flavors we consider in estimation, Breyers Homemade Vanilla and Dreyers Natural Vanilla and Vanilla Custard. Given the assumed log-normal distribution of fixed costs, the median level of fixed costs may be the most informative summary measure. As a check on their magnitudes, we compare the fixed costs

**Table 8** Normal distribution parameters of estimated log fixed cost

Parameter	Estimate	Std. error <sup>a</sup>	Confidence interval <sup>a</sup>	
Mean $\bar{v}_{b,f}$				
Breyers homemade vanilla	5.5397	0.2555	4.9245	6.0253
Dreyers natural vanilla	8.3850	0.1221	8.1301	8.6555
Dreyers vanilla custard	5.0629	0.1223	4.8732	5.3448
Standard deviation $\sigma_{b,f}$				
Breyers homemade vanilla	2.1791	0.2495	1.7400	2.7197
Dreyers natural vanilla	1.9015	0.1495	1.5468	2.1735
Dreyers vanilla custard	2.1672	0.1689	1.9886	2.5601

<sup>a</sup>Bootstrapped standard errors and confidence intervals based on 100 bootstrap replications

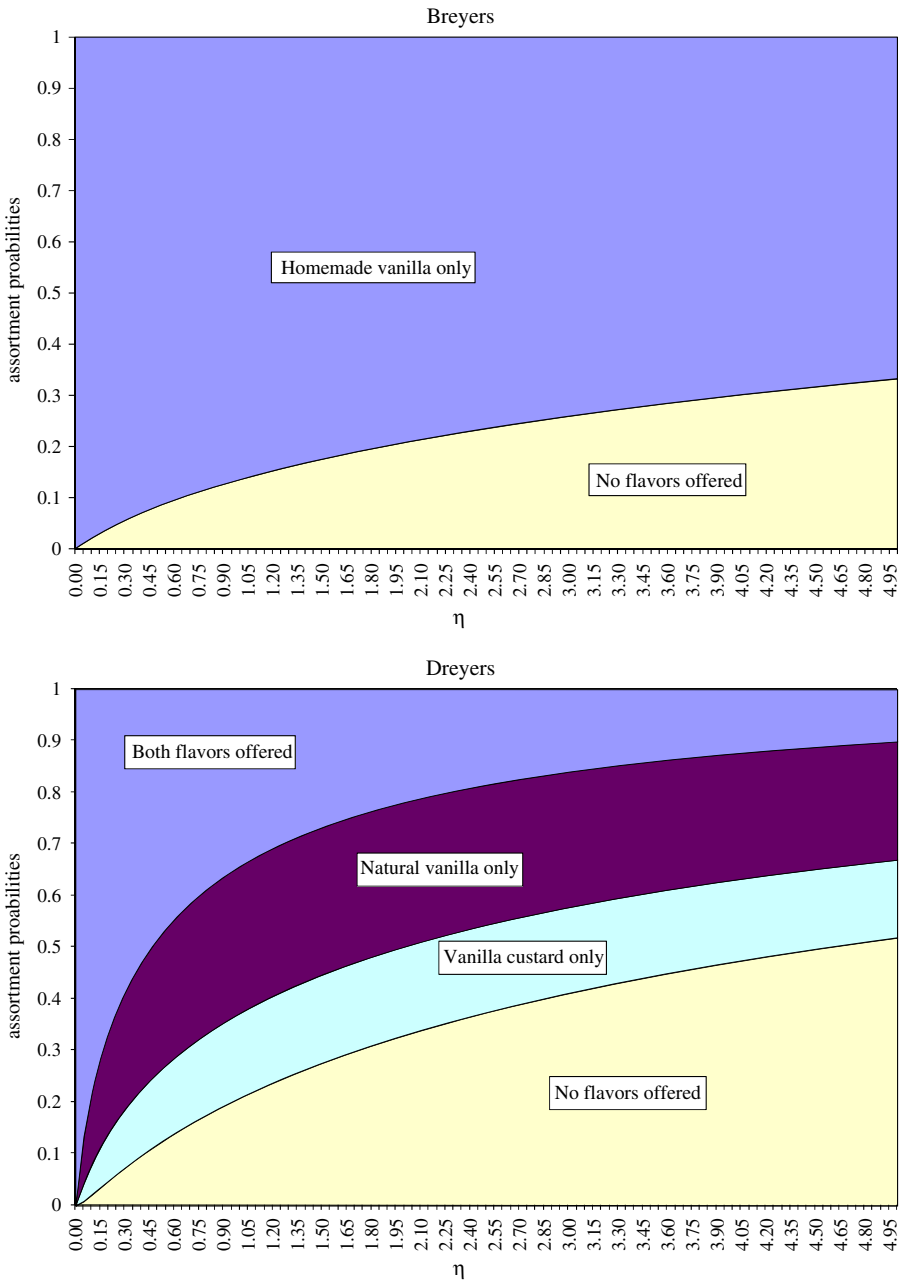
to the variable profits implied by the demand and marginal cost parameters presented in Table 7. The variable profits amount to \$5,961.78 (standard deviation of \$5,792.69) for Breyers Homemade Vanilla, \$14,903.37 (standard deviation of \$14,792.72) for Dreyers Natural Vanilla, \$288.09 (standard deviation of \$279.81) for Dreyers Vanilla Custard. They are comparable to the estimated fixed costs, suggesting that our fixed costs estimates are reasonable, as their value would translate into frequent, though not universal, offering of the three flavors in question.

Across flavors, our estimates imply significant variation in fixed costs across markets and time. The estimated large variances are at least partly explained by the role the fixed costs play in our econometric model. Fixed costs close the model from an econometric perspective while our pricing and demand analysis determines the variable profit in each market and period based on the demographic characteristics, marginal cost shifters, and competition. The fixed-cost estimates rationalize the combination of the pricing and product choice (availability) decisions observed in the data. As such, the estimates could more broadly be considered measures of unobservable, non-demand or marginal cost factors determining product availability. However, in our application we feel that interpreting them as fixed costs makes the most economic sense.

**Table 9** Implied means, standard deviations, and medians of estimated fixed costs

Parameter	Estimate	Confidence interval <sup>a</sup>	
Mean			
Breyers homemade vanilla	3340.9	1759.8	6353.6
Dreyers natural vanilla	28447.0	15959.2	46020.1
Dreyers vanilla custard	2302.1	1103.1	4844.8
Standard deviation			
Breyers homemade vanilla	83533.0	8510.6	256505.2
Dreyers natural vanilla	188332.6	54739.4	407440.3
Dreyers vanilla custard	44679.3	7990.0	107313.2
Median			
Breyers homemade vanilla	252.2	137.6	413.7
Dreyers natural vanilla	4653.4	3395.3	5741.7
Dreyers vanilla custard	167.2	130.7	209.5

<sup>a</sup>Bootstrapped confidence intervals based on 100 bootstrap replications



**Fig. 5** Assortment probabilities as a function of level of fixed costs

Figure 5 shows how the flavor offerings change with the fixed costs. We plot changes in the optimal product portfolio offered by Breyers and Dreyers in response to uniform increases in the level of fixed costs across flavors.  $\eta$



is a scale factor that multiplies fixed costs across flavors, where the baseline fixed costs result from setting  $\eta$  equal to one. In the case of Dreyers, the figure illustrates differential effects of higher flavor fixed costs on bundle offerings, with the probabilities of offering only one of the optional flavors or not offering any optional flavor initially gaining steadily in fixed cost at the expense of the option of offering both flavors. For higher levels of fixed cost, however, the single-flavor options hold relatively steady assortment shares, while the option of offering neither of the two flavors continues to grow in likelihood. This finding suggests that the two flavors substitute for each other, such that with high fixed cost, demand is not sufficient to offer both, but more than outweighs the fixed cost of offering only one of the two flavors. We investigate the role of differentiation between optional flavors in greater detail in the next section.

## 6 Policy experiments

We demonstrate the economic significance of the estimated structural parameters in several illustrative analyses. First, because we explicitly model demand to derive the variable profits that drive firms' product choices, we can study how changes in demand affect assortment choices; i.e., changes in heterogeneity in preferences or willingness to pay can be traced through to firms' responses in flavor offerings. Second, our model allows firms to adjust their product offerings optimally in response to a change in the competitor's assortment. We illustrate the advantages of this approach in a merger simulation.

### 6.1 Horizontal differentiation

Given the logit specification for consumer demand in Eq. 1, we can investigate the role of horizontal preference heterogeneity by varying the logit scale parameter (Anderson et al. 1992). In estimation, we normalize it to one. In a counterfactual, we compute how market shares, mark-ups, and ultimately assortment choices respond to changes in the scale parameter (or equivalently, to rescaling all demand estimates).

We find that as the heterogeneity in consumer tastes increases, both Breyers and Dreyers are more likely to increase the number of flavors they offer. With increased horizontal differentiation, even small "pockets" of demand become more valuable, thus giving firms an incentive to crowd the product space. Dreyers, for example, is more aggressive in offering Natural Vanilla than Vanilla Custard alone for low to intermediate degrees of product differentiation. This reflects that while Natural Vanilla has a higher estimated average fixed cost than Vanilla Custard, it also has a higher estimated flavor preference, making it on average more attractive to consumers than Vanilla Custard. As horizontal differentiation increases, Vanilla Custard becomes the most frequently offered stand-alone product since its flavor preference and thus profitability are amplified, now balancing its fixed costs. Most frequently,

however, with a sufficiently high degree of horizontal product differentiation, both flavors make up Dreyers' optimal portfolio.

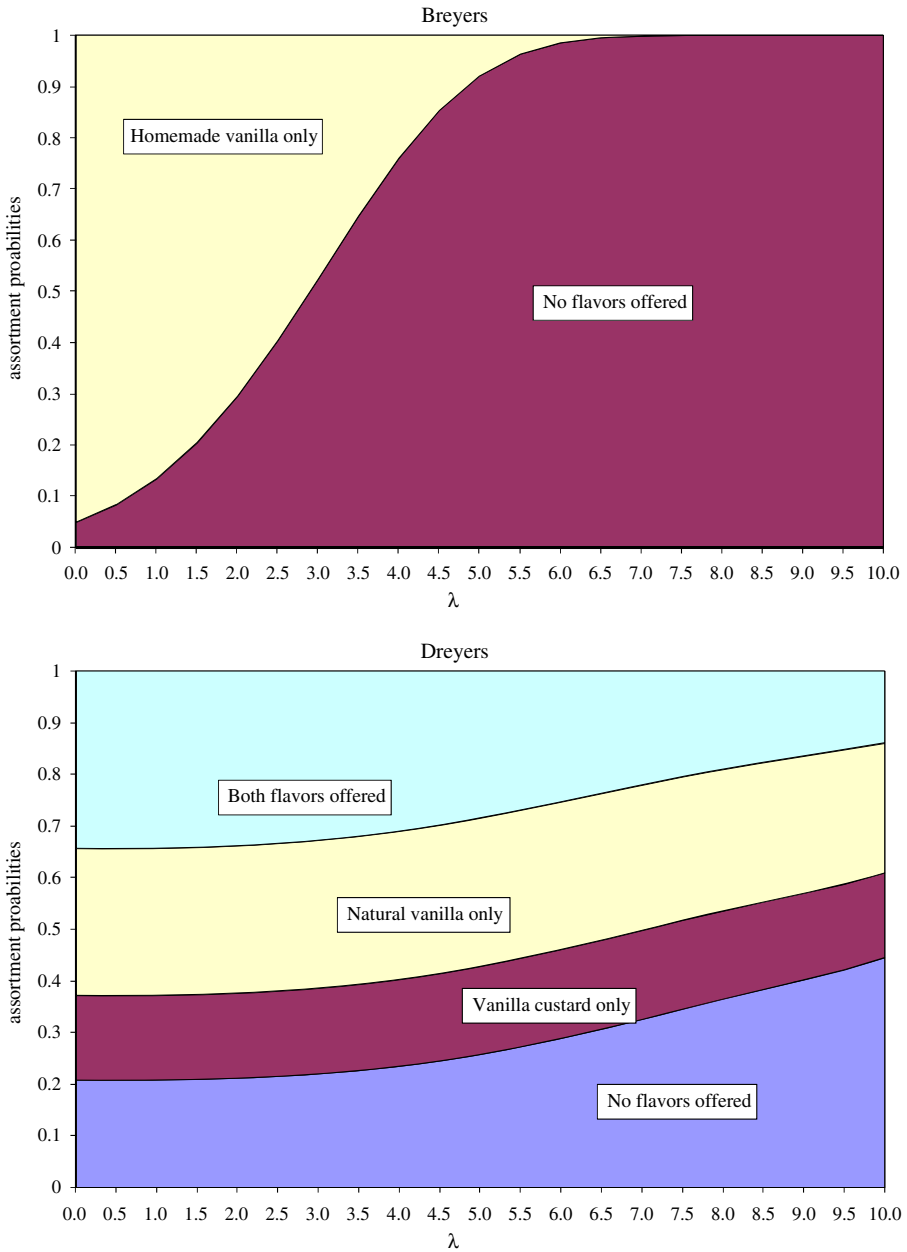
## 6.2 Vertical differentiation

Next we consider the effect on each brand's assortment of increasing the dispersion in the flavor constants for each brand's set of optional and staple vanilla flavors included in the demand system. A brand may consider what extent of vertical differentiation (i.e., variation in the perceived quality) among its flavors is optimal. On the one hand, offering a large array of options may appeal to a set of consumers with differing willingness to pay. On the other hand, offering options of vastly differing quality may dilute the brand image. Thus if a brand can invest in promotion efforts, would it pay off to focus on only some offerings to raise the degree of vertical differentiation of the product line? Alternatively, if a brand decides to extend its product line, is it beneficial to add a product of similar quality to the line?

We vary the degree of vertical differentiation between each brand's flavors by decomposing the contribution of the brand and flavor constants into the mean brand effect  $\beta_b + \bar{\beta}_b$ . (9.83 for Breyers and 5.60 for Dreyers) and deviations from the mean, where  $\beta_b$  denotes the estimated brand constant and  $\bar{\beta}_b$  denotes the mean flavor constant. Thus,  $\beta'_{bf} = \lambda_b (\beta_{bf} - \bar{\beta}_b) + \beta_b + \bar{\beta}_b$ . Our model estimates above are based on a specification where  $\lambda_b = 1$ . We vary the dispersion in brand-flavor constants by increasing  $\lambda_b$  from zero, equivalent to there being no vertical differentiation between the brand's flavors, to a value of ten, which corresponds to significantly more vertical differentiation than in our estimates. In particular, if we estimate a given flavor dummy to be above (below) average for the brand, then it becomes more (less) attractive for  $\lambda_b > 1$ . By construction, we leave the average preference for the brand, and therefore the attractiveness of the brand's entire portfolio, unchanged.

As above, we use the estimated random-coefficient demand, marginal, and fixed cost parameters, together with varying values for  $\lambda_b$ , to trace out how the product assortment of each brand changes as the degree of vertical differentiation in its flavors changes. Figure 6 illustrates the effect that increasing vertical differentiation in its flavors has on Breyers' own assortment choice, as well as the competitive effect of such a change on Dreyers' assortment choice.

To see the own-brand effects, consider the case of Breyers. The estimated brand and flavor effects for the optional flavor that we consider in the product choice stage (Homemade Vanilla) are below Breyer's average of 9.83, with a value of 8.52 (see Table 10 for the flavor point estimates and implied values for the brand-flavor combinations). The vertical preferences for the flavor thus falls as we increase the degree of vertical differentiation in the product line ( $\lambda_{\text{Breyers}}$ ). Panel 1 in Fig. 6 illustrates that in response Breyers is increasingly likely not to offer the flavor, an effect that is magnified by the fixed costs that Breyers pays for offering the flavor (which is normalized to zero for all other flavors). The probability that Homemade Vanilla is offered decreases



**Fig. 6** Assortment probabilities as a function of Breyers’ degree of vertical differentiation

monotonically. In general, as  $\lambda$  goes to infinity, we would expect only the top flavor of a brand to be offered.

The bottom panel in Fig. 6 shows that there is also a competitive response to the varying degree of Breyers’ vertical product differentiation on Dreyers’

**Table 10** Flavor constants<sup>a</sup>

	Breyers		Dreyers	
	Estimated constant	Implied brand-flavor value	Estimated constant	Implied brand-flavor value
Vanilla	10.1082*	10.9040	10.1082*	9.5349
French vanilla	9.1267*	9.9225	9.1267*	8.5534
Natural vanilla	9.8130*	10.6088	9.8130*	9.2397
Homemade vanilla	7.7256*	8.5214		
Extra creamy vanilla	8.3811*	9.1769		
Vanilla bean			9.9889*	9.4156
Vanilla custard			5.8449	5.2716
Double vanilla			-7.8658	-8.4391

<sup>a</sup>Recall from Table 7 that Breyers constant is 0.7958 and Dreyers is -0.5733

\*Denotes significance at the 5% level

assortment choice. As the degree of vertical product differentiation rises, it puts downward pressure on the single price that Breyers charges for all its flavors. Since in the Bertrand pricing game prices are strategic complements, Dreyers' price declines as well. The associated decline in variable profit makes it increasingly difficult for Dreyers to cover the fixed cost of offering its optional flavors, so that the likelihood of offering the full assortment of optional flavors declines monotonically in  $\lambda_{Breyers}$ . The probabilities that Natural Vanilla or Vanilla Custard are offered on their own do not respond significantly to increases in Breyers' vertical differentiation, suggesting that as the full assortment is slowly removed from the market, some of the demand for the removed flavor is redirected to the remaining optional flavor.

### 6.3 Merger analysis

One compelling reason to model endogenous product choice together with demand is to generate more accurate merger simulations. As discussed previously, simulations based on demand models that do not allow for the possibility of a change in the composition or characteristics of the post-merger product portfolio do not necessarily reflect the firm's optimal behavior. Our model permits a more accurate simulation, as both price and the set of offered products can be optimally adjusted. To illustrate the impact of this change, we computed a series of simple merger counterfactuals using our estimated parameters. The results demonstrate the potential pitfalls that can occur by ignoring endogenous product choice.

We simulate equilibrium behavior in three different scenarios. First is the base duopoly case in which Breyers and Dreyers are rivals, choosing products to offer and then competing on price. We then allow the firms to merge, acting like a monopolist in choosing assortments and potentially offering all three optional flavors. We distinguish between two alternatives: constraining the merged firm to offer the same products that the duopolists did (fixed products, the current standard in the literature) or allowing it to re-optimize in the

product-choice stage (endogenous choices). As a consequence, the monopolist potentially chooses a different set of products to offer than in the competitive environment.

Table 11 presents a summary of the key market-level outcomes under these scenarios (monopoly, fixed product choice, endogenous product choice), with all figures representing the average outcomes across markets. The leftmost panel of Table 11 uses our estimation setting and includes as choices on the demand side all brands and flavors. Since the optional flavors of Breyers and Dreyers, which are the focus of our analysis, represent a very small share of the total market, the effects of a merger are—unsurprisingly—small. To investigate the role of the category’s market size, we thus consider as an alternative a setting where the market is comprised only of the three optional flavors and the value of the outside option is decreased by 50%. These results are reported in the central panel of Table 11. In the rightmost panel we present how the impact of a merger in this second environment is affected by an increase in the fixed cost of offering a flavor.

Our “fixed products” merger simulation generates reasonable findings in line with other studies using similar methodology. Comparing the first two columns of each panel, prices and profits are higher for the merged firm than for competing duopolists, while consumer surplus is lower. By construction, the number of flavors is the same in each of the first two columns. When no longer constrained, total industry profits are (necessarily) higher, as the newly merged firm chooses to offer a different assortment some of the time. The post-merger product assortment depends critically on the interplay between the flavors’ profitability and the level of the fixed costs of offering additional flavors. For our empirical setting, the differences between the fixed and endogenous products scenarios are small, reflecting the small market share of the optional flavors. With a higher base value of consuming vanilla, the differences between the fixed and endogenous products cases are more pronounced, in particular as the fixed cost of offering a flavor increases.

In the scenarios depicted in the two right panels of Table 11, the number of flavors offered decreases once we allow for post-merger assortment adjustments, and more so with higher fixed costs. The changes in assortment affect all flavors whose offering probabilities decrease uniformly. Such assortment adjustments allows the monopolist to reduce the substitutability and thus cannibalization between its offerings. This in turn limits the monopolist’s incentive to raise prices, relative to the fixed products case. The results for the two scenarios studied here reflect such trends: the average price falls slightly relative to the fixed product case, restricting the anticompetitive effects of the merger. Incorporating endogenous product choice into the merger analysis thus has two effects on consumer surplus; it falls in response to the decrease in variety that the merged firm offers, but rises in response to the lower prices of the changed variety. Our results suggest that on net, the loss due to decreased variety dominates, resulting in a consumer surplus that is comparable, to but slightly lower, than the consumer surplus obtained in the fixed products analysis.

**Table 11** Merger analysis based on empirical results<sup>a</sup>

	All flavors & firms			Breyers & Dreyers' optional flavors only					
	Duopoly	Merged firm		Estimated fixed cost			High fixed cost		
		Fixed products	Endog. choices	Duopoly	Fixed products	Endog. choices	Duopoly	Fixed products	Endog. choices
Price, Breyers	3.785	3.846	3.846	4.549	6.329	6.283	4.763	5.980	5.761
Price, Dreyers	3.427	3.530	3.530	4.842	6.027	6.003	4.764	5.552	5.508
Total profits, Breyers	8.379	8.392	8.392	3.260	3.348	3.394	2.174	2.240	2.330
Total profits, Dreyers	4.721	4.723	4.723	5.307	6.480	6.461	3.790	4.438	4.540
Industry total profits	13.101	13.115	13.115	8.567	9.828	9.855	5.964	6.678	6.871
Profits, opt. flavors, Breyers	4.392	4.408	4.231	3.260	3.348	3.394	2.174	2.240	2.330
Profits, opt. flavors, Dreyers	7.497	7.518	7.452	5.307	6.480	6.461	3.790	4.438	4.540
Number of flavors	1.999	1.999	1.980	2.550	2.550	2.483	1.581	1.581	1.435
Share of time offered									
Natural vanilla	0.865	0.865	0.862	0.975	0.975	0.951	0.611	0.611	0.535
Homemade vanilla	0.628	0.628	0.619	0.869	0.869	0.841	0.587	0.587	0.553
Vanilla custard	0.507	0.507	0.498	0.706	0.706	0.691	0.384	0.384	0.347
Consumer surplus	14.730	14.651	14.628	14.906	14.074	14.055	14.048	13.662	13.657

<sup>a</sup>Results in the first panel are based on the estimated coefficients and the full set of flavors and competitors. Consumer surplus is computed for optional flavors only. Results in the second and third panel eliminate Breyers' and Dreyers' staple flavors and regional players from the analysis; set the total market to 5% of the actual market; and scale down the value of the outside option by 50%. Panel 3 contains the results in this setting from increasing the mean of log fixed cost by a factor of 1.75, 1.25, and 1.5 for Natural Vanilla, Homemade Vanilla, and Vanilla Custard, respectively, and decreasing the standard deviation of log fixed cost by a factor of 0.9 for Homemade Vanilla and Vanilla Custard

These simulated merger results also give some idea about magnitudes; in particular, whether ignoring product assortment endogeneity generates substantial changes between the fixed and endogenous assortment results (as compared with the differences between the duopoly and the fixed products monopoly scenarios). As such, one could interpret the results in Table 11 as suggesting that ignoring product choice has minimal effect if the fixed costs to offering each product are low. However, it is important to recognize that the example constrains the merged firm to optimize only among the previously offered flavors. In a case where the merged firm has the entire Hotelling line available to choose from (as in Gandhi et al. 2008) or a larger flavor choice set at its disposal, the impact is likely to be more substantial. Additional market participants may also re-optimize portfolios post-merger, generating more changes to surplus and profits. Nonetheless, this exercise clearly demonstrates the importance of endogenizing product choice in the context of a policy simulation.

The results in any specific case will rely critically on the estimated parameters of the model. In the analyses shown here, the merged firm offers fewer flavors on average than an optimizing monopolist. It is also possible that the merged firm offers more products than a duopolist because the reduction in price competition subsequent to the merger allows the monopolist to profitably incur the fixed costs to offer additional flavors some of the time. As a consequence, the merger could result in both higher total profits and higher consumer surplus as compared with the duopoly case. Table 12 provides an example of such an outcome for a simpler demand structure than the one used

**Table 12** Merger analysis with simulated data<sup>a</sup>

		Duopoly	Merged firm	
			Fixed products	Endog. choices
Low fixed cost	Price brand 1	4.1707	4.8710	4.8317
	Price brand 2	3.9295	4.7381	4.6685
	Total profits brand 1	0.2117	0.4981	0.4833
	Total profits brand 2	0.2075	0.3266	0.3822
	Industry total profits	0.4191	0.8247	0.8656
	Number of flavors	1.8585	1.8585	1.4361
	Consumer surplus	2.7593	1.2642	1.2261
High fixed cost	Price brand 1	4.6044	4.7048	4.8011
	Price brand 2	4.4347	4.4736	4.5245
	Total profits brand 1	0.0487	0.0488	0.0646
	Total profits brand 2	0.0818	0.0819	0.0790
	Industry total profits	0.1305	0.1307	0.1436
	Number of flavors	0.4395	0.4395	0.4709
	Consumer surplus	0.6356	0.6348	0.6766

<sup>a</sup>Both scenarios assume the same demand parameters of  $\beta_0 = [6.5; 6.0; 5.0; 5.5]$ ,  $\beta_{\text{price}} = -2.5$ ,  $\beta_{\text{temp}} = 0.1$ , where  $[\beta_0^1 \dots \beta_0^4]$  denotes the four flavor-specific intercepts, and marginal cost parameters of  $\gamma_0 = [0.45; 0.30]$ ,  $\gamma_{\text{distribution}} = 0.001$ , and  $\gamma_{\text{sugar}} = 0.3$ , where  $\gamma_0^1, \beta_0^2$  denotes brand-specific intercepts. The low fixed cost scenario assumes the following parameter values for the four flavor fixed cost distributions:  $\bar{v} = [0.35, 0.3, 0.09, 0.12]$  and  $\sigma = [0.16, 0.16, 0.16, 0.16]$ , while the high fixed scenario is based on  $\bar{v} = [1.44; 1.20; 1.00; 1.12]$  and  $\sigma = [0.16; 0.16; 0.16; 0.16]$

here. We simulated data with two firms offering two products each, where the only demand shifters are brand-flavor constants, price and temperature. As is evident from the table, the resulting endogenous post-merger product assortment depends critically on the level of the fixed costs of offering additional flavors. In the low fixed cost regime the merged firm offers fewer flavors on average either at duopoly or at monopoly prices, while the merged firm occasionally offers more products in the high fixed cost scenario. Indeed, it appears that the reduction in price competition makes it worth spending the higher fixed cost to offer an additional flavor some of the time. As a consequence, in the high fixed cost simulation the merger results in both higher total profits and higher consumer surplus as compared with the duopoly case. The gain accruing to consumers due to the availability of more products offsets the higher prices due to reduced competition. Hence a merger in this case is unambiguously welfare enhancing, contrary to the inferences based on the commonly used methodology, where firms cannot reoptimize their product offerings.

The various scenarios studied here highlight the range of effects that assortment changes could have on consumer surplus and profitability subsequent to a merger. Assortment adjustments by merged firms reflect attempts to reduce within-assortment cannibalization weighed against the higher margins captured by each flavor in the assortment in a more concentrated industry. In the cases we study, a reduction in the size of the merged firm's assortment is accompanied by lower prices relative to the fixed products case, reflecting the reduced cannibalization of its sales. The opposite is true when the firm optimally expands its assortment and increases substitution between its offerings. The ability to capture the effect of such price and variety trade-offs on consumers is a unique benefit to a framework such as ours. It highlights that a fixed-products merger analysis may overstate the consumer welfare implications of mergers, by ignoring that product variety generates standalone consumer benefits or that product assortment adjustments may mitigate subsequent price increases.

## 7 Conclusions

In this paper, we show how a location choice model can be extended to study product assortment decisions. Because demand structure and price competition are critical in markets with differentiated products, a derivation of profits from an explicit model of the strategic interactions in the product market is needed. We thus develop a framework which integrates endogenous product choice and demand-and-supply model of competition in a market with differentiated products. The empirical model generates estimates of the fixed costs associated with offering particular products in addition to the typical demand and marginal cost parameters.

With these estimates in hand the researcher is better able to conduct counterfactual experiments by allowing competitors to change their product offerings optimally as part of the exercise. We demonstrate the impact of



endogenizing product-assortment decisions in the context of a merger simulation, in which the merged firms often choose a different set of products than those previously offered, generating higher profits. The impact of abstracting from endogenous product choice may or may not be large, depending on the estimated cost and demand parameters. What is clear though is that sometimes we reach fundamentally different conclusions by modeling joint product assortment and pricing decisions.

Unlike the reduced-form approaches used in the entry literature, by explicitly modeling price competition we show how demand-side factors affect product-assortment decisions. In particular, we investigate the effect of horizontal and vertical differentiation on equilibrium assortments and prices. With increased horizontal differentiation, even small consumer segments can become valuable enough to give firms an incentive to crowd the product space. The effect of a change in vertical product differentiation is more subtle and depends on how exactly consumers value the various products alternatives that a firm may consider offering. There is no doubt, however, that product assortment decisions are not made in a competitive vacuum: As our empirical findings indicate, when a rival's products become more differentiated, the price level in the market may fall and the firm may be inclined to cull the variety offered since variable profits no longer can cover fixed costs.

Our two-stage game partially captures the relative irreversibility of assortment decisions, but ideally the model would also reflect the different periodicity of the pricing and product choice decisions. One may also want to allow for serial correlation in firms' assortment decisions over time. Short of specifying and estimating a fully dynamic model, one could enrich the present model to introduce state-dependence, thus allowing the distribution of fixed costs to differ systematically depending on whether the product has been offered in the previous period.

Another promising venue for future research is to extend the proposed model in order to account for the selection bias in demand estimation in the presence of unobserved product characteristics. The selection bias occurs because firms only offer products with anticipated high demand, i.e., favorable unobservable (to the researcher) characteristics. Modeling firms' product assortment choices explicitly as we do is a potential way to correct for the selection bias, but it requires recovering the full distribution of the unobservable characteristics. The estimates of such a selection model, together with the current estimates that reflect exclusively fixed cost considerations, would provide two useful benchmarks for assessing the likely magnitude of assortment adjustments in response to changes in preferences or the competitive environment.

## References

- Anderson, S., de Palma, A., & Thisse, J. (1992). *Discrete choice theory of product differentiation*. Cambridge, MA: MIT.

- Bajari, P., Hong, H., Krainer, J., & Nekipelov, D. (2006). Estimating static models of strategic interaction. NBER Working Paper No. W12013.
- Berry, S. (1994). Estimating discrete-choice models of product differentiation. *RAND Journal of Economics*, 25, 242–262.
- Berry, S., Levinsohn, J., & Pakes, A. (1995). Automobile prices in market equilibrium. *Econometrica*, 63, 841–890.
- Berry, S., Levinsohn, J., & Pakes, A. (2004). Differentiated products demand systems from a combination of micro and macro data: The new vehicle market. *Journal of Political Economy*, 112(1), 68–104.
- Berry, S., & Waldfogel, J. (2001). Do mergers increase product variety? Evidence from radio broadcasting. *Quarterly Journal of Economics*, 116, 1009–1025.
- Bresnahan, T., & Reiss, P. (1987). Do entry conditions vary across markets? *Brookings Papers on Economic Activity*, 1987(3), 833–881.
- Bresnahan, T., & Reiss, P. (1991). Entry and competition in concentrated markets. *Journal of Political Economy*, 99(51), 977–1009.
- Caplin, A., & Nalebuff, B. (1991). Aggregation and imperfect competition: On the existence of equilibrium. *Econometrica*, 59, 26–59.
- Draganska, M., & Jain, D. (2006). Consumer preferences and product-line pricing strategies: An empirical analysis. *Marketing Science*, 25(2), 164–174.
- Draganska, M., Mazzeo, M., & Seim, K. (2007). *Beyond plain vanilla: Modeling product assortment choices in the ice cream market*. Working Paper No. 1982R, Stanford Graduate School of Business.
- Einav, L. (2003). *Not all rivals look alike: Estimating an equilibrium model of the release date timing game*. Working Paper, Stanford University.
- Gandhi, A., Froeb, L., Tschanz, S., & Werden, G. (2008). Post-merger product repositioning. *Journal of Industrial Economics*, 56(1), 49–67.
- Hajivassiliou, V., & McFadden, D. (1998). The method of simulated scores for the estimation of ldv models. *Econometrica*, 66(4), 863–896.
- Heckman, J. (1978). Dummy endogenous variables in a simultaneous equation system. *Econometrica*, 46(6), 931–959.
- Hotelling, H. (1929). Stability in competition. *Economic Journal*, 39, 41–57.
- Mazzeo, M. (2002). Product choice and oligopoly market structure. *RAND Journal of Economics*, 33, 221–242.
- Nevo, A. (2000). Mergers with differentiated products: The case of the ready-to-eat cereal industry. *RAND Journal of Economics*, 31(3), 395–421.
- Nevo, A. (2001). Measuring market power in the ready-to-eat cereal industry. *Econometrica*, 69(2), 307–342.
- Orhun, Y. (2006). *Spatial differentiation in the supermarket industry*. Working Paper, GSB Chicago.
- Reiss, P. C., & Spiller, P. T. (1989). Competition and entry in small airline markets. *Journal of Law & Economics*, 32(2), S179–202.
- Rust, J. (1994). Estimation of dynamic structural models, problems and prospects: Discrete decision processes. In C. Sims (Ed.), *Advances in econometrics: Sixth world congress* (Vol. 2). Cambridge: Cambridge University Press.
- Seim, K. (2006). An empirical model of firm entry with endogenous product-type choices. *RAND Journal of Economics*, 37(3), 619–642.
- Shankar, V., & Bolton, R. (2004). An empirical analysis of determinants of retailer pricing strategy. *Marketing Science*, 23(1), 28–49.
- Thomadsen, R. (2007). Product positioning and competition: The role of location in the fast food industry. *Marketing Science*, 26(6), 792–804.
- Zhu, T., & Singh, V. (2006). *Spatial competition and endogenous location choices: An application to discount retailing*. Quantitative Marketing and Economics, Forthcoming.