

Leading into the Future:

Managing in a Changing World

November 1 – November 12, 2020

Information Session

Northwestern | Kellogg

EXECUTIVE EDUCATION

The Team



David Collins
Program Manager

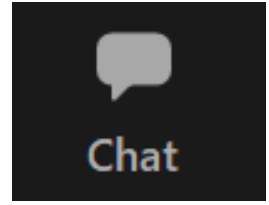


Gretchen Baker
Associate Director
of Advising



Cindee Bath
Session Support

Chat Prompt



Where are you joining us from?

Program Academic Director



David S. Friedman

Clinical Assistant Professor of Executive Education

Senior Program Director of Executive Education

Program Overview

Leading into the Future

Northwestern | Kellogg


Why attend this program



- Learn tools to survive and thrive - as you lead into the future
- Take the time to think about how each tool links to what you do, and what you'll need to do
- Learn from faculty and from each other



Why Live Virtual?

- 
- A smiling man with a beard, wearing a light blue polo shirt, is sitting at a desk. He is looking towards the camera. In front of him is a computer monitor and a mouse. A large, stylized world map is in the background, with yellow lines connecting various points across the continents, symbolizing global connectivity. The map is blue with white outlines for landmasses. Yellow lines with small yellow circles at the end connect various points across the map, representing a global network or virtual connections.
- Very interactive – not a webinar or an “online program”
 - You can do it now!
 - Get the knowledge
 - Make the connections

Resources & Opportunities to Connect



Network with your peers during small group lunches

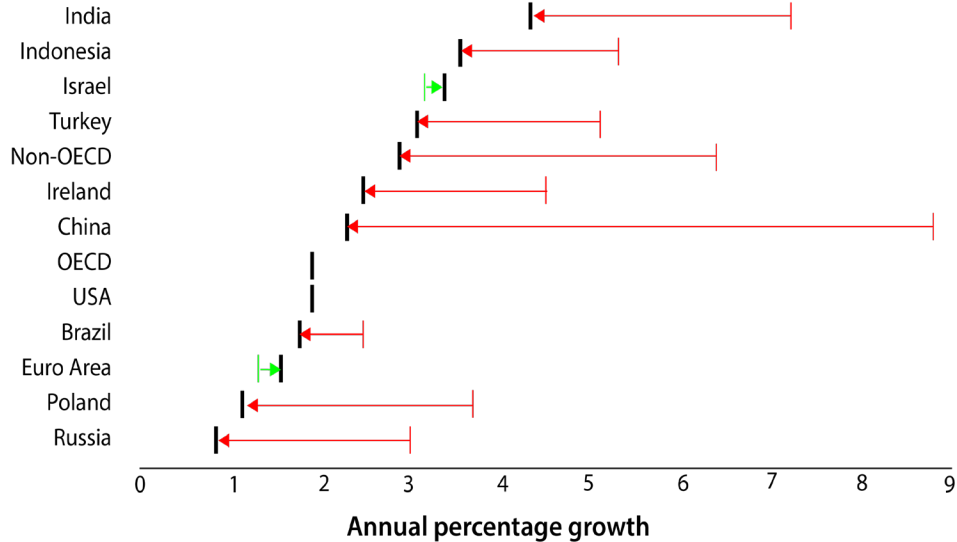
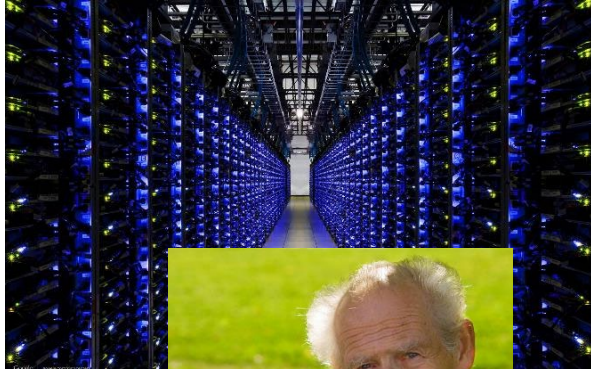


Dig deeper during faculty office hours



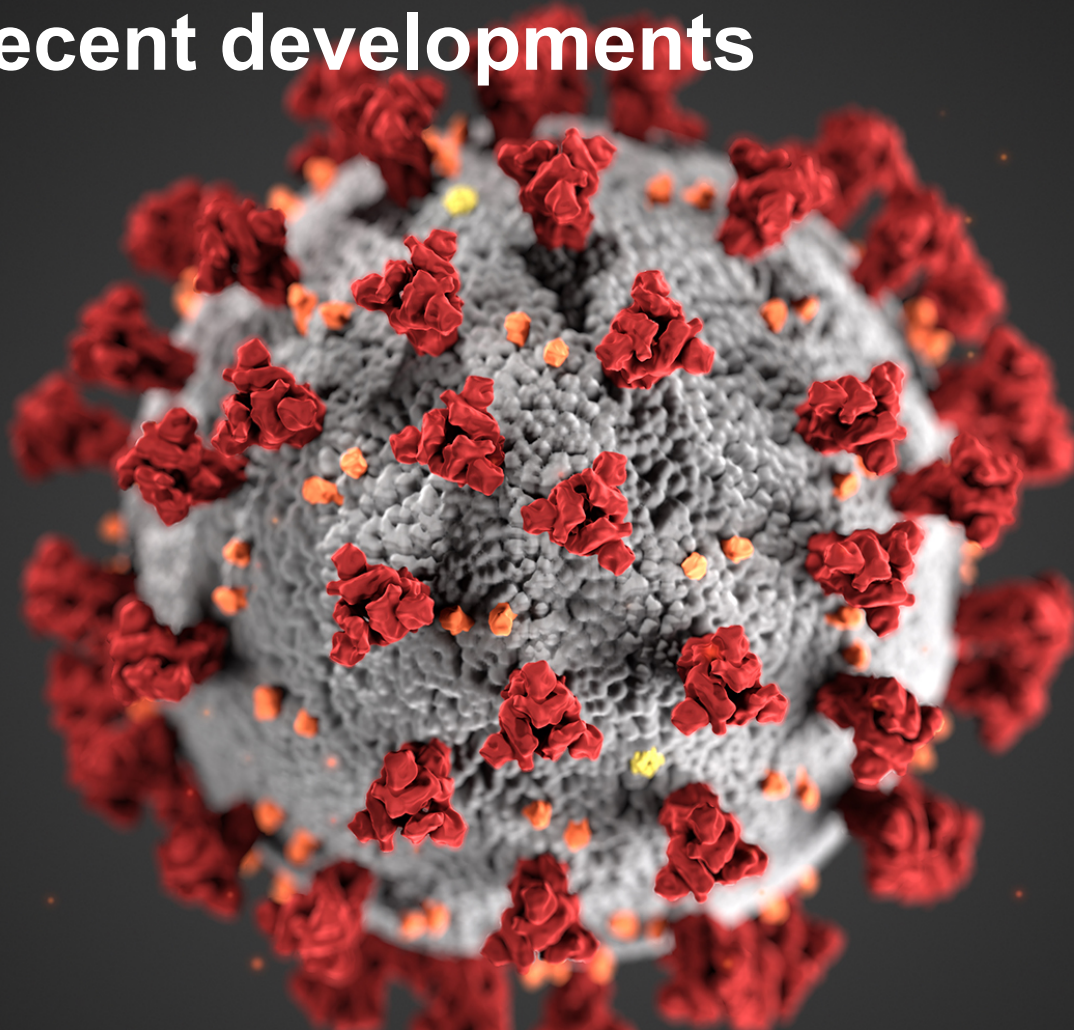
Explore resources on a robust course site

Gain tools to respond wisely to long-term forces..



Source: OECD long-term baseline projections, No. 103

... and recent developments



Let's talk with each other



- Name
- Your organization & responsibilities
- What are the biggest challenges and issues you face?
- What are the biggest opportunities you face?

Challenges

Opportunities

Future is both challenge and opportunity



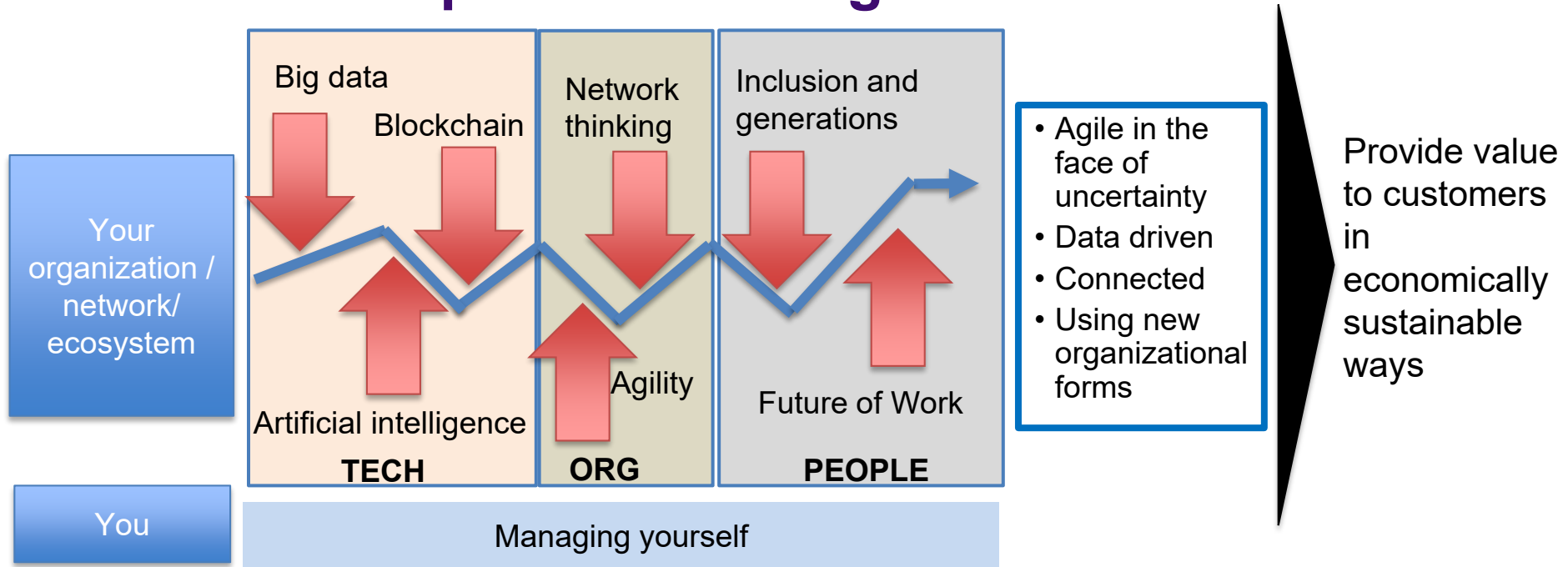
Three questions we want you to answer - repeatedly

What?

So
what?

Now
what?

Program goal – serving customers well by effective response to change



First Week

Northwestern | Kellogg

Participant Introductions on Sunday, November 1, at 10:00 AM CDT

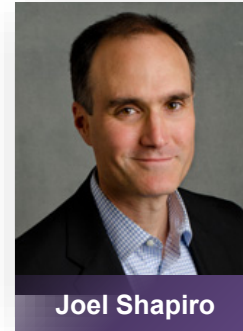
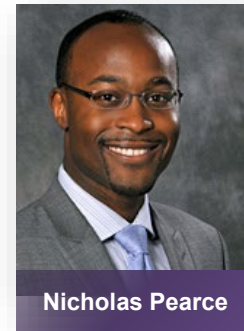
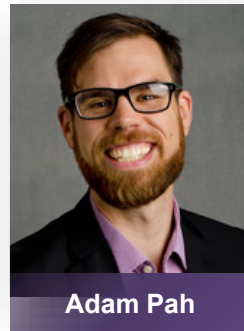
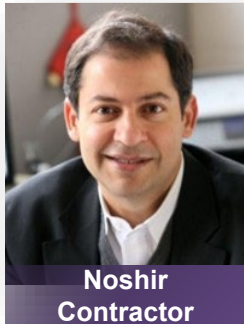
LEADING INTO THE FUTURE			FIRST WEEK: NOVEMBER 1-6, 2020		
Academic Director: David Friedman david.friedman2@kellogg.northwestern.edu			Program Manager: David Collins d-collins@kellogg.northwestern.edu		
TIME (US CENTRAL)	MONDAY NOVEMBER 2	TUESDAY NOVEMBER 3	WEDNESDAY NOVEMBER 4	THURSDAY NOVEMBER 5	FRIDAY NOVEMBER 6
7:45 - 8:00	Zoom meeting opens	Zoom meeting opens	Zoom meeting opens	Zoom meeting opens	Zoom meeting opens
8:00 AM - 9:30 AM	Program Introduction (8:00-8:30 AM)	Generating Business Value with Data Analytics	Beyond Diversity: Accelerating Inclusion & Leading for Equity	The Network Insight	Blockchain Technology and Your Organization
	David Friedman	Joel Shapiro	Nicholas Pearce	Noshir Contractor	Sarit Markovich
9:30 - 9:45	Break	Break	Break	Break	Break
9:45 AM - 11:15 AM	Creating Customer Value (8:30-9:30 AM)	The What, Why and Where of Artificial Intelligence	Beyond Diversity: Accelerating Inclusion & Leading for Equity (cont'd)	Network Tools and Signatures	Blockchain Technology and Your Organization (cont'd)
	Rick Kolsky	Adam Pah	Nicholas Pearce	Noshir Contractor	Sarit Markovich
11:15 - 11:30	Break	Break	Break	Break	
11:30 AM - 1:00 PM	Creating Customer Value (cont'd) (9:45-11:15 AM)	The What, Why and Where of Artificial Intelligence (cont'd)	U.S. Elections – Optional Chat (until 12:15 PM)	Understanding and Improving My Own Network	
	Rick Kolsky	Adam Pah	David Friedman	Noshir Contractor	
OFFICE HOURS		Office Hours – Rick Kolsky 1:15 - 2:00 PM			
NETWORKING	Virtual Lunch 11:30 AM - 12:30 PM			Social Hour 1:15 - 2:15 PM	Virtual Lunch 11:30 AM - 12:30 PM

Second Week

Northwestern | Kellogg

LEADING INTO THE FUTURE		SECOND WEEK: NOVEMBER 9-11, 2020	
Academic Director: David Friedman david.friedman2@kellogg.northwestern.edu		Program Manager: David Collins d-collins@kellogg.northwestern.edu	
TIME (US CENTRAL)	MONDAY NOVEMBER 9	TUESDAY NOVEMBER 10	WEDNESDAY NOVEMBER 11
7:45 - 8:00	Zoom meeting opens	Zoom meeting opens	Zoom meeting opens
8:00 AM - 9:30 AM	Strategic and Organizational Agility Ned Smith	The Future of Work David Friedman	The Emotional Brain: Managing Yourself to Manage Others Robin Nusslock
9:30 - 9:45	Break	Break	Break
9:45 AM - 11:15 AM	Strategic and Organizational Agility (cont'd) Ned Smith	The Future of Work (cont'd) David Friedman	Looking for the Future David Friedman
11:15 - 11:30	Break	Break	Break
11:30 AM - 1:00 PM	Strategic and Organizational Agility Organized Breakout Discussion Ned Smith/ David Friedman	"So What's" and "Now What's" Optional Discussion David Friedman	Program Close (until 12:00 PM) David Friedman

Meet the rest of the faculty



Q & A

For more information:

- Go to kell.gg/kxcentury
- Contact your program Advisor – Gretchen Baker
gretchen-baker@kellogg.northwestern.edu

Thank you!