



**Fact Sheet for Full-Time MBA Program
Academic Year 2016-2017
SKK Graduate School of Business**

SKK GSB, the Best MBA in Korea!

SKK Graduate School of Business was established in 2004 at Sungkyunkwan University in cooperation with Samsung Foundation and MIT Sloan School of Management. Since then, it has made tremendous progress.

In only ten years its Full-Time MBA program has been ranked No. 1 in Korea and top 1% in the world since 2012 by The Financial Times Global MBA Rankings. With its innovative research, dedicated education, and excellent students from over the world, SKK GSB has earned a global reputation as the best MBA school in Korea for the quality of its MBA education and faculty research. We offer three acclaimed MBA programs at SKK GSB that fit your career needs and goals: Full-Time MBA, Professional MBA, and Executive MBA.

1. CONTACTS

Mailing Address:	#90206, International Hall, Sungkyunkwan University, 25-2, Sungkyunkwan-ro, Jongro-gu, Seoul, Korea 03063
Website:	http://gsb.skku.edu/en/
Contact:	Ms. EunJin Kim Assistant Director of International Relations jinsmile@skku.edu Phone: +82-2-740-1506 / Fax: +82-2-740-1503

2. ACADEMICS

Language of Instruction:	All courses are offered in English
Class Size:	20 - 30 students for each elective course (40-50 students per batch)
Course Load:	4 - 5 courses for one 7-week Module Period (MP) and 1 course for one 1-week Intensive Week (IW)
Credit Hours:	Each course is 1.5 credits (22.5 class contact hours)
Course Registration:	Exchange students will work with the SKK GSB office to select and register their courses before their arrival
Grading:	The grading scale is A+, A, B+, B, C+, C, F, P (Pass) on a 4.5 GPA scale

3. CAREER SERVICES

Exchange students will have access to the Career Development Center and most activities while on exchange.

- Career Advising
- Job Information
- Resume Clinic
- Mock Interviews
- Alumni / Guest Speaker Series

4. ACADEMIC SCHEDULE

Fall 2016

MP5	August 22 – October 14, 2016*
	<i>*Chuseok Recess: September 12 – 16, 2016</i>
IW6	October 17 – October 21, 2016
MP6	October 24 – December 09, 2016

Spring 2017

MP3	January 09 – March 03, 2017**
	<i>** Lunar New Year Recess: January 23 – 27, 2017</i>
IW2	March 06 – March 10, 2017
MP4	March 13 – April 28, 2017

Summer 2017

IW3	May 01 – May 05, 2017
IW4	May 08 – May 12, 2017
IW5	May 22 – May 26, 2017

NOTE:

*Exam period is accounted for in the dates listed above
Dates are subject to change*

5. ESTIMATED EXPENSES

Housing*: \$1,500 - \$2,500 per semester

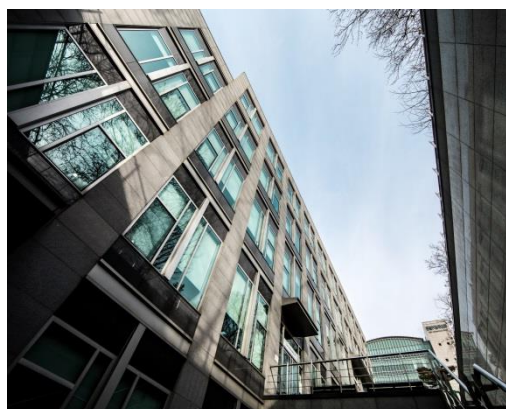
**The office will try to provide dormitory rooms (<http://dorm.skku.edu/>) but it could not be guaranteed*

Course Materials: \$350 per semester

Health Insurance: \$400 per semester (may be waived, provided the student has his/her own health insurance)



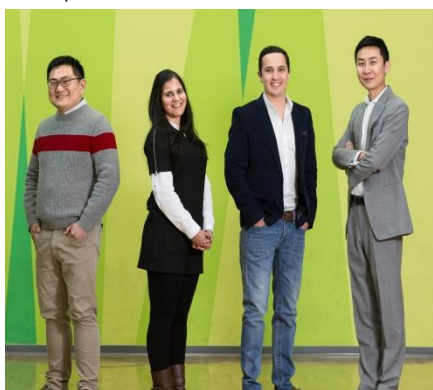
Spring in SKKU (Bicheondang & International Hall)



International Hall



Class Photo



Full-Time MBA students (Year 2016)



Alumni Mentoring Night