

**KSA**

Kellogg Student Association

---

**Kellogg Student Association**

*Overview Presentation*

## Representative Kellogg student government...a *super club*

- 200+ student leaders (1st and 2nd yrs) across
  - KSA Executive Committee
  - KSA Executive Board
  - Other KSA Affiliated Groups
- Sponsors \$250,000 budgets for 100 committees, clubs, and organizations that together comprise...“Kellogg”
- Kellogg’s student-led culture is a differentiating factor compared to other schools... **and KSA is the driving force behind that**

## What does KSA do?

- KSA represents FT student concerns across Kellogg
  - **Academics** (interacts with professors, departments, and Deans to review faculty performance and curriculum offerings)
  - **Career** (supports CMC in assisting students with internship and job search to identify and promote quality employment opportunities)
  - **Global** (represents the global perspective to ensure Kellogg remains a global leadership institution)
  - **Technology** (liaisons with KIS to troubleshoot technology issues and provide strategic thinking for technology needs)
  - **Culture & Social** (plans and hosts numerous events, parties and cultural gatherings for every Kellogg student)
  - **Alumni Relations** (enhances interaction between the Kellogg alumni community and current Kellogg students)
  - **Business with a Heart (BWAH)** (coordinates and champions Kellogg community's service efforts)

# Why Should I Join KSA?

- KSA interacts with many stakeholders
  - Prospective students
  - Current students
  - Alumni
  - Faculty
  - Administration
  - Community
- As such, it offers the following benefits:
  - High potential to impact Kellogg and its culture
  - Significant contact with the senior leaders of Kellogg
  - Chance to take initiative and affect change
  - Unique experience at Kellogg that requires balancing the needs/motivations of a diverse group of stakeholders while managing a process to deliver an end goal

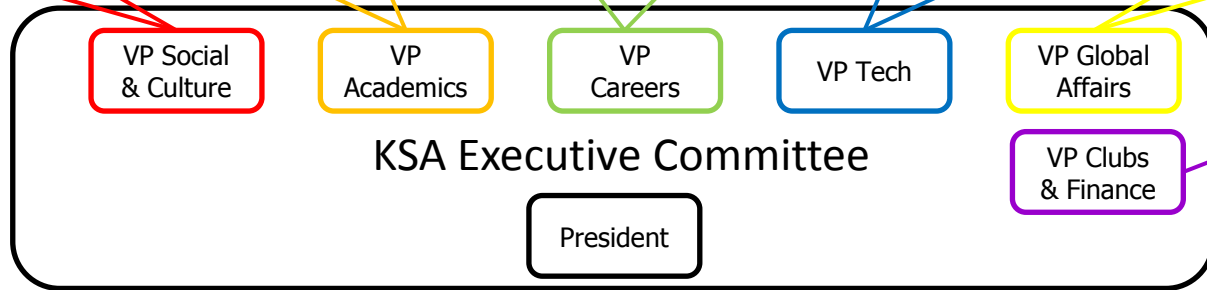
# How is KSA Structured?

- **KSA Executive Committee (7 positions)**
  - President
  - Clubs and Finance Vice President
  - Academic Vice President
  - Career Management Vice President
  - Global Affairs Vice President
  - Technology Vice President
  - Cultural & Social & Vice President
- **KSA Executive Board (21 positions)**
  - 1st Year Board Representative (8) plus MMM (1)
  - Second Year Board Representative (5) plus MMM (1)
  - VP of Alumni Relations (1)
  - 1Y (2), Internal Transfer (1), JD/MBA (1), and International Exchange (1)

# KSA Structure

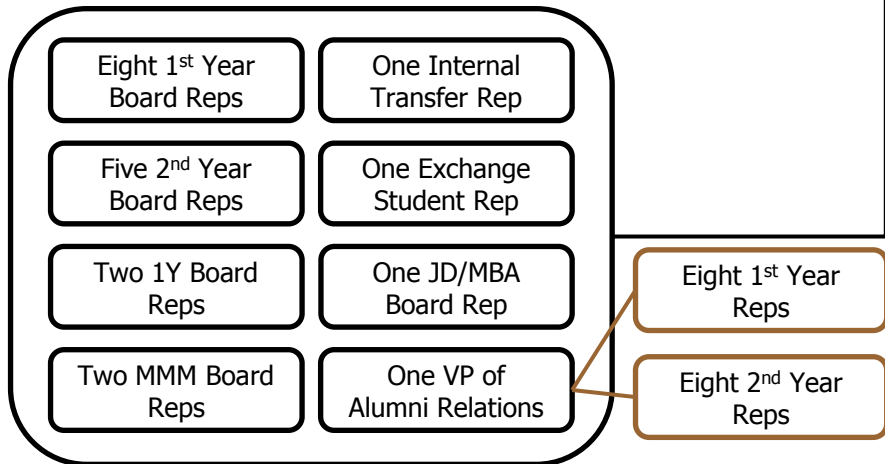
Largest student-run organization at Kellogg, with over 200 active leaders

## KSA Executive Sub-Committees

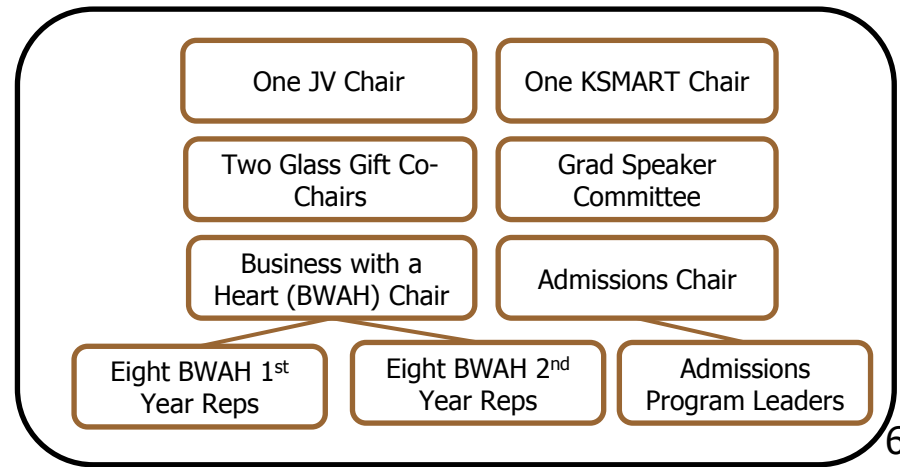


Ninety clubs with about 450 club leaders  
  
Twelve conferences with about 100 leaders

## KSA Executive Board



## KSA Affiliated Groups



## **Board Positions**

- Board Representative (1, 1Ys have 2)

## **Committee Positions (2 year commitment)**

- Academic Section Representative (1)
- Career Management Section Representative (1)
- Global Affairs Section Representative (1)
- Technology Section Representative (1)
- Cultural & Social Section Representatives (2)
- Alumni Relations Section Representative (1)
- Business With a Heart Representative (1)

## **Board Representative Responsibilities:**

- Be a voice for your section and fellow students
- Identify and complete initiatives important to your section and the broader student body – working with other students and administration to push them forward
- Work with other reps in your section to meet section needs
- Attend/participate in all Thursday KSA Board meetings (5:15-6:15pm)

## **Section Representative Responsibilities:**

- Work with committee leader and committee members (from other sections) to push forward initiatives created by group
- Work with other reps in your section to meet section needs
- Attend all committee meetings (most committees biweekly)

## Want to Learn More?

---

- Check out the KSA website!  
<http://www.kellogg.northwestern.edu/student/ksa/site/index.html>