

**Figure 1: Employee Effort and Firm Profit**

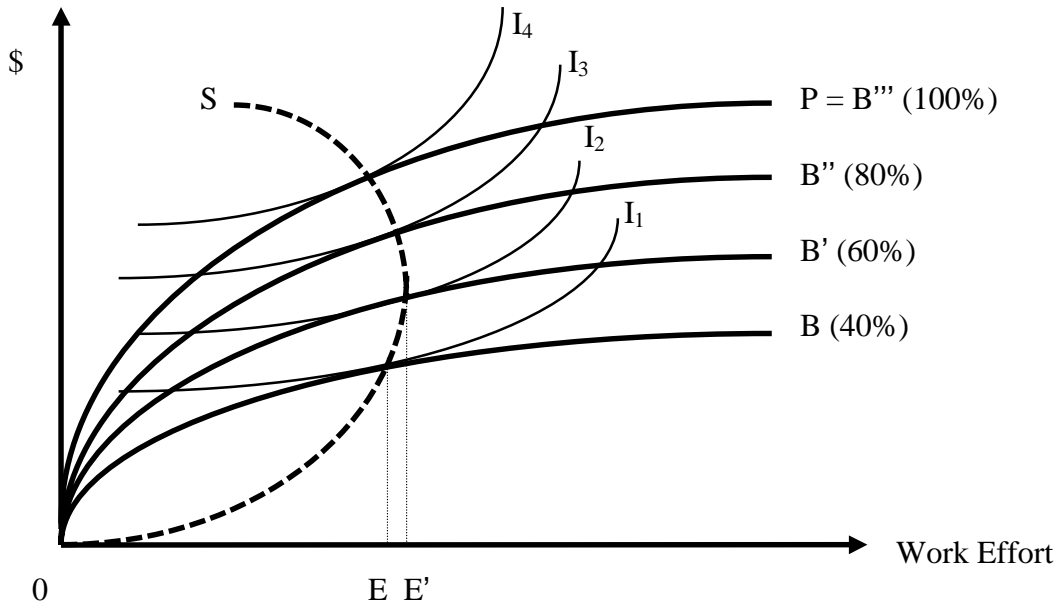
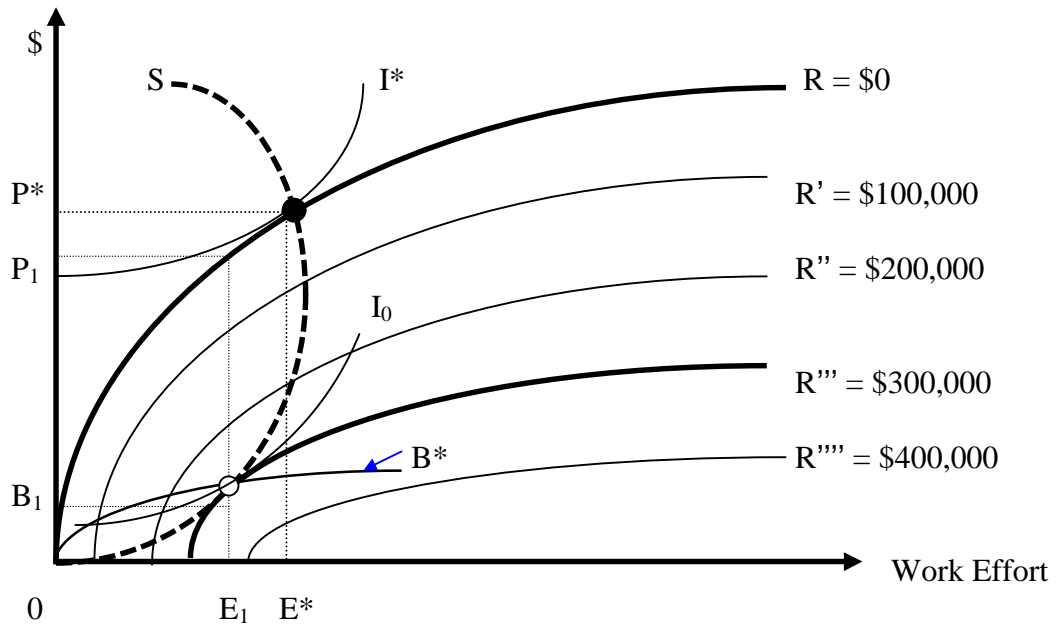


Figure 2: Diminishing Returns to Employee Effort



**Figure 3: Ability and the Incentive to be an Entrepreneur**

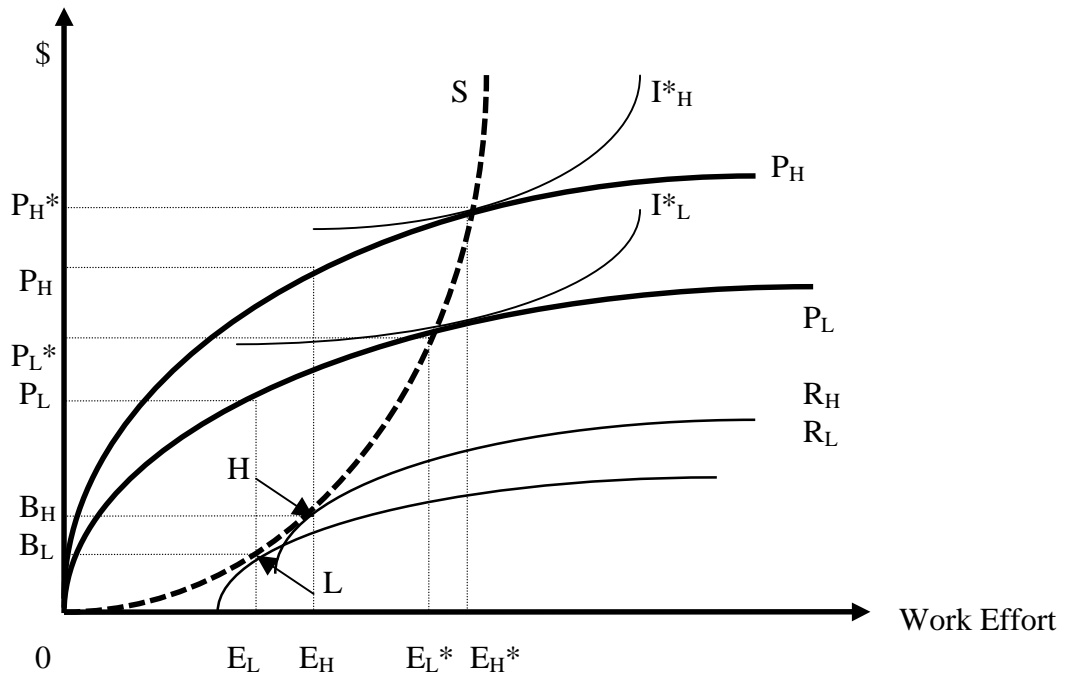
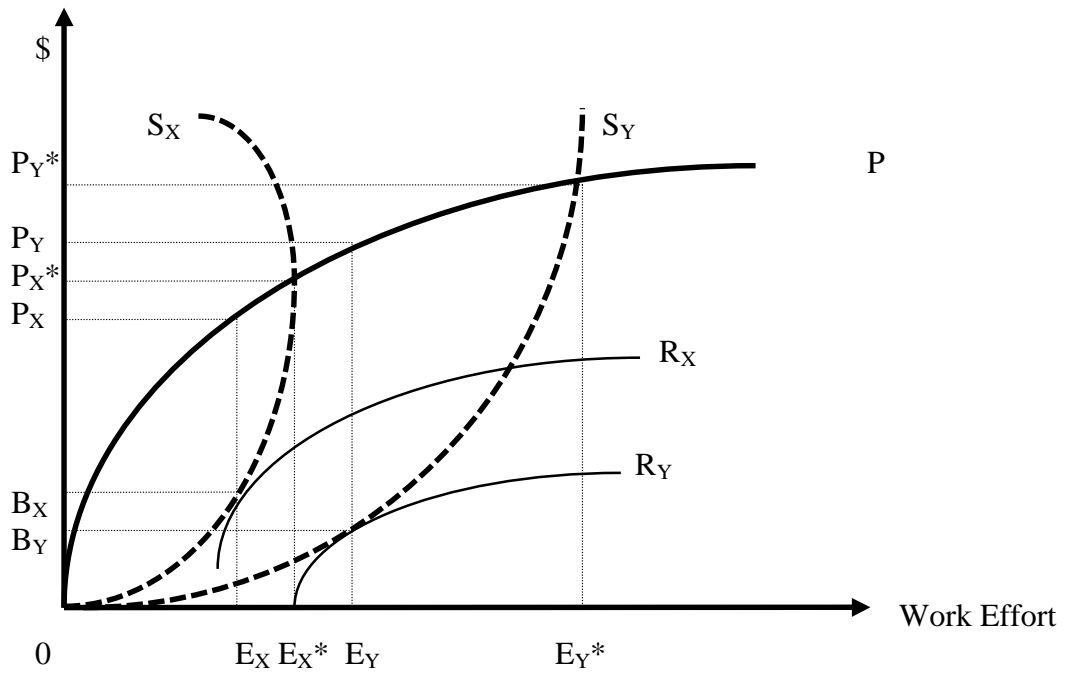
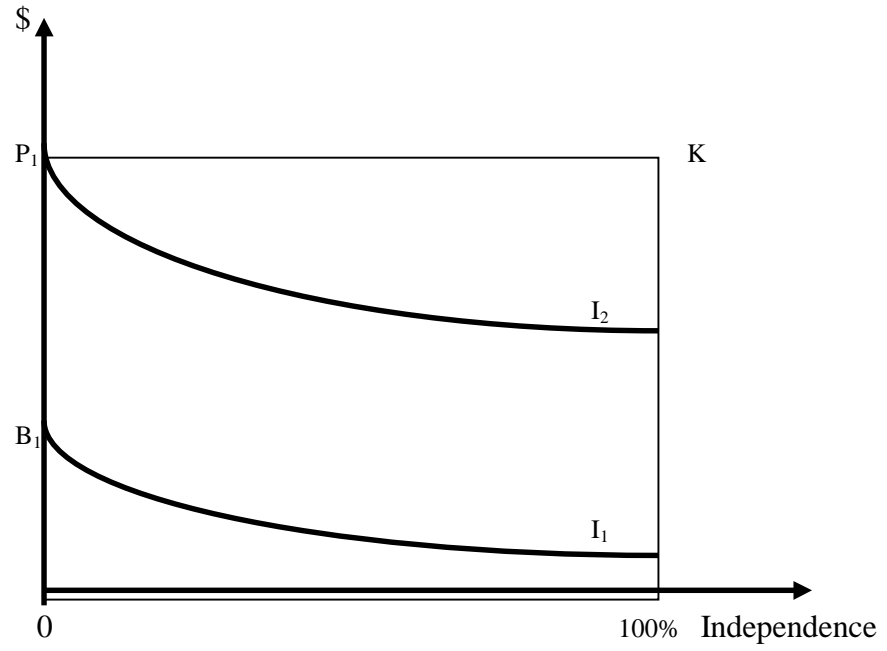


Figure 4: Attitude to Work Effort and the Incentive to be an Entrepreneur



**Figure 7: A Preference for Independence**



**Figure 6 Attitude to Independence and Incentive to be an Entrepreneur:  
Slight Aversion.**

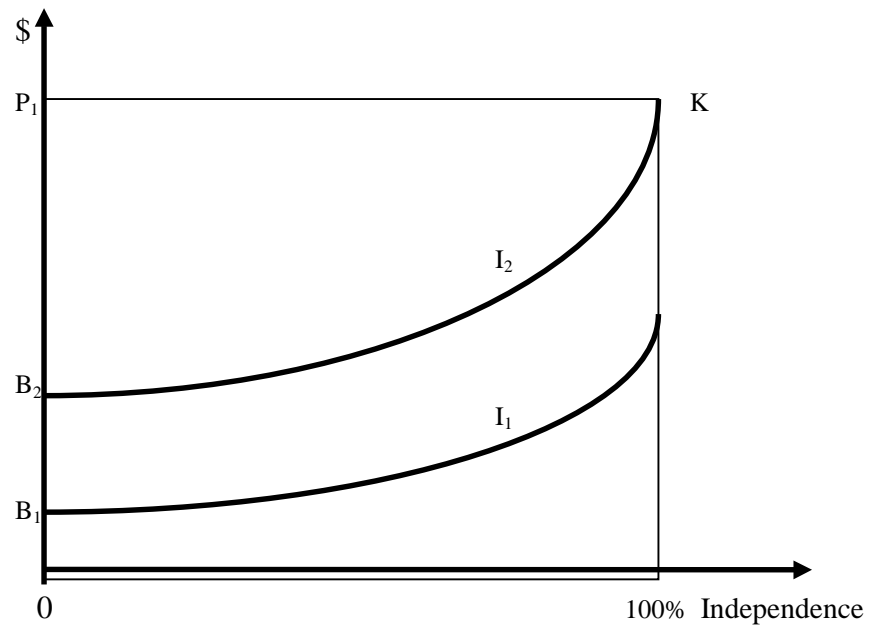


Figure 5: Attitude to Risk and the Incentive to be an Entrepreneur

