

## Accessing *skew3* using X-Win32

Written by P. Ledesma  
September 22, 2000

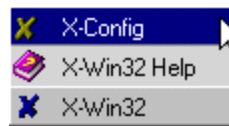
### 1. Before you begin

Before moving on to the next section, make sure that:

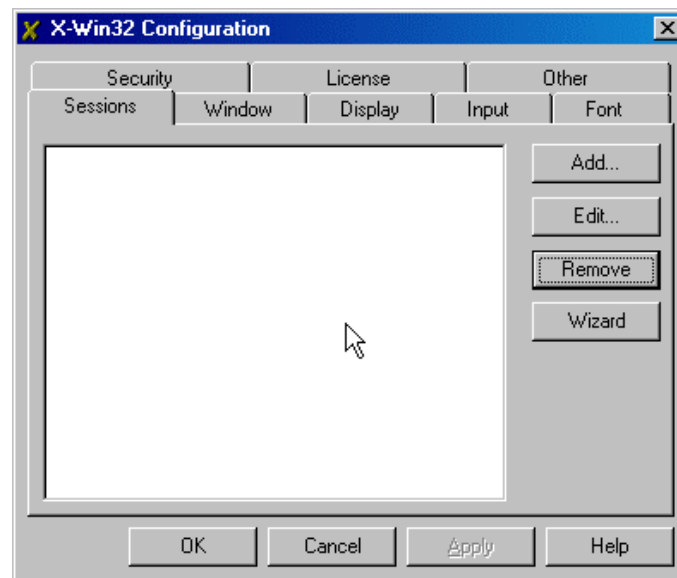
- You have a *skew3* account already and that you can telnet into *skew3*.
- StarNet's X-Win32 (version 5) must be already installed in your computer.

### 2. Configuring X-Win32

- Open the "X-Config" application, which is under the "X-Win32 5.0" menu created under the Start menu when you installed the application:



- This brings up the Configuration window, with the Sessions tab selected.



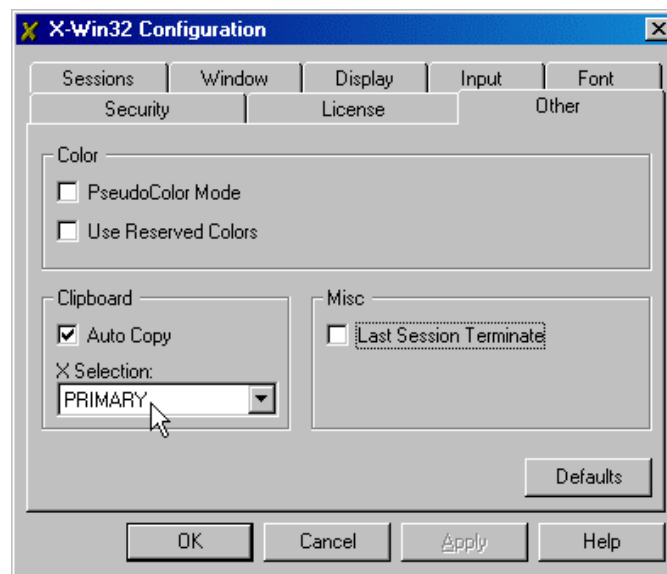
- Click on the "Wizard" button. This will bring up a series of screens in which you provide information about *skew3* and the connection method. The next few paragraphs provide the necessary information for the setup. Each paragraph starts with the title of the corresponding dialog window you will see.

- *Host*: Here you will provide the complete hostname for *skew3*:

`skew3.kellogg.northwestern.edu`

Click on the “Next” button to continue.

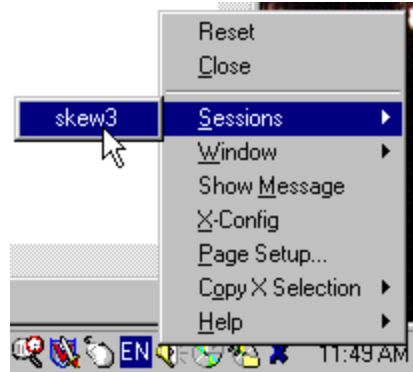
- *Connection method*: Choose XDMCP (the last option listed). XDMCP stands for “X Display Management Control Protocol”, which is a protocol that allows control of the “xdm” program, a display manager, in the host (*skew3*). Click on the “Next” button to continue.
- *XDMCP*: Set the XDMCP broadcast mode to “Query”. Click on the “Next” button to continue.
- *Name of session*: Finally, provide a name for the session. For example, call it “*skew3*”. This is the name you will use to launch the session on *skew3*, once everything is configured. Make sure the “Launch this session now” option is not selected. Click on the “Finish” button.
- You should be back at the X-Win Configuration window. Click on the “Other” tab (shown below)



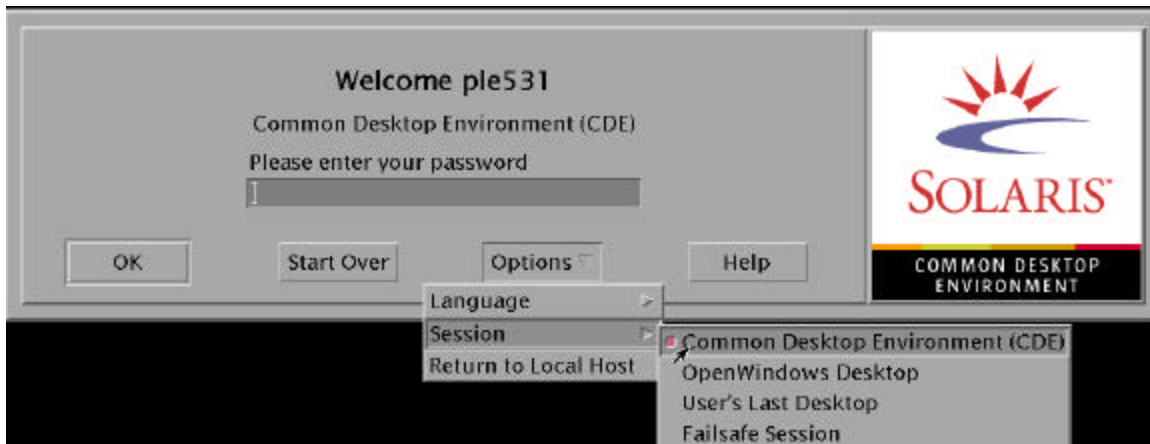
Make sure that “PRIMARY” is the option selected under “X Selection”. Click “OK” to finish.

### 3. Starting a session on skew3

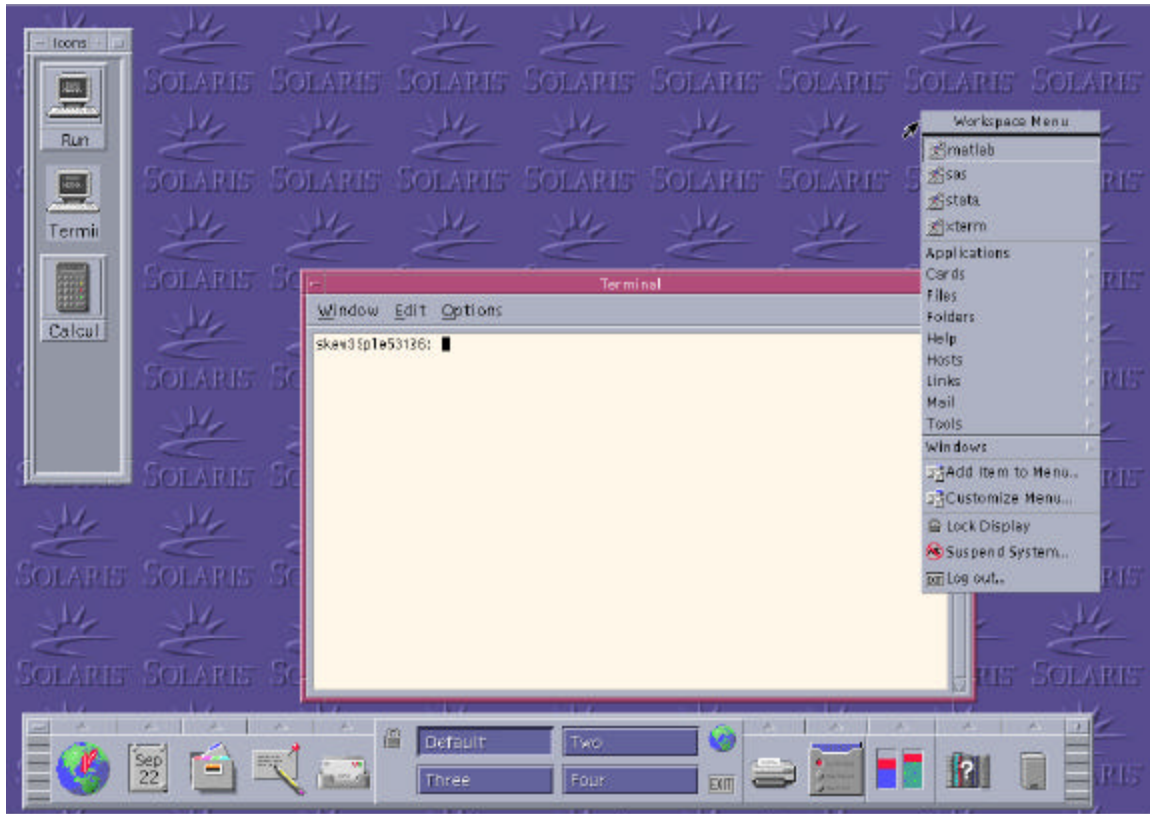
- Launch X-Win32. You will see its icon (a blue X) appear in the system tray. Right click on it to get the full menu. You will see the “*skew3*” session you created under the “Sessions” menu.



- Selecting the skew3 session will bring up screens in which you will be prompted for your user name (net ID) and password. The second one, where you are prompted for the password, allows you to select the type of session to run. Click (and hold the mouse button down) on the Options button, select “Session” to choose “Common Desktop Environment”.



- After a few seconds (depending on network traffic, the speed of your machine, etc), you will finally see the desktop. Here is a sample desktop:



#### 4. Learning more about Sun's CDE:

To learn more about the CDE, you may refer to the online documentation provided by Sun Systems. Point your web browser to:

<http://docs.sun.com/query.html>

Query for "CDE". One of the available titles is "*Solaris Common Desktop Environment. User's Guide*".

There is also online help within the CDE, clicking on the question mark icon in the "front panel" (the panel located at the bottom of the screen).

#### 5. Creating a shortcut on your MS Windows desktop

You can create a shortcut to your session for quick access by right clicking on your desktop and selecting "New", "Shortcut". The command should read:

```
"C:\Program Files\StarNet\X-Win32 5.0\xwin32.exe" skew3
```

The exact path to "xwin32.exe" depends on your installation.