

NUCATS news

Northwestern University Clinical and Translational Sciences Institute

Fall 2009

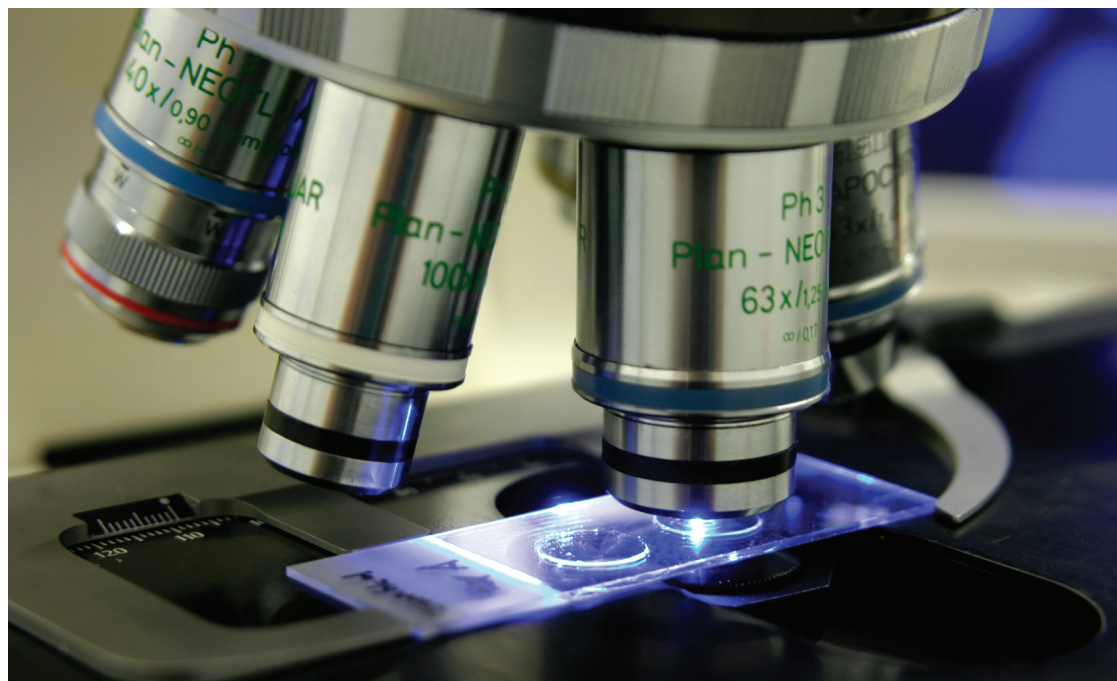


NORTHWESTERN
UNIVERSITY

Table of Contents

An Update from Dr. Greenland	2
Grantsmanship Overview	3
Science of Team Science— A NUCATS Original	3
NUCATS Innovation Day	4
NUCATS' Pilot Grant Award Winner	4
NUCATS Announces Three New MCTS Program Scholars	5
CRC Basic Training Course Dates for 2010	5
A Look at LatticeGrid	6
eNOTIS Subject Enrollment	6
Clinical Research Unit (CRU) Announces New Space	7
Center for Clinical Research (CCR) Continues Transition	7
CERC Partners with Several CTSA Cohorts	8
CERC Seed Grants	8
Upcoming Events/ Announcements	9
NUCATS' High Fives	10

www.nucats.northwestern.edu



Northwestern University Clinical and Translational Sciences Institute Secures More Than \$2 Million in NIH/ARRA Funding

NUCATS is valued as a complete partner and is strategically positioned to remove the roadblocks that slow interdisciplinary clinical and translational research.

The Northwestern University Clinical and Translational Sciences (NUCATS) Institute announced that it received four supplement awards totaling more than \$2 million from the National Center for Research Resources (NCRR), part of the National Institutes of Health (NIH). The awards—made possible through the American Recovery and Reinvestment Act (ARRA)—support the NUCATS' mission of developing cross-disciplinary scientific teams focused on accelerating biomedical research discoveries to improve human health.

Each new award will provide two years of funding for collaborative projects, during which teams are expected to complete the research. The funded projects, which span a number of schools throughout the University, are:

■ Engineering in Medicine Program Between McCormick School of Engineering and the Feinberg School of Medicine.

A two part initiative, the first of which addresses education and training in clinical and translational research for engineering post-doctoral trainees. This two-year program includes a structured life sciences/medicine educational experience, and co-mentored research with faculty from FSM and MCC, integrating engineering and life sciences/medicine. The second program creates a new mini-sabbatical fellowship for engineering faculty to collaborate in a clinical or translational research lab at FSM. The project is led by Lewis Smith, MD, professor of medicine

(continued on next page)

An Update from Dr. Greenland

Hello, NUCATS Team-

I wanted to take a moment to provide some background on the Portfolio Framework process, which many of you are involved with. You'll continue to hear from me on this topic, as it is an important initiative for the Institute.



NUCATS Institute and Northwestern Memorial Hospital are partnering in an evaluation project called the Portfolio Management Charter. The Portfolio Management project integrates with our internal Evaluation team's activities, and is intended to complement these efforts. The Portfolio Management project extracts high level metrics from NUCATS logic models in order to offer an executive dashboard of NUCATS

progress and goal attainment. The partnership maps to the NUCATS' Mission and Vision by creating a unified culture committed to results.

The process is straightforward:

- Teams are currently finalizing logic models and charters, which will be shared internally over the next few weeks:
 - Logic Models: Evaluation—Operational data
 - Portfolio Framework Charters—Key metrics, high-level
- On an ongoing basis, teams will collect data on various projects related to the charters and logic models—this is one set of data—that will also be available for other reporting needs such as the annual CTSA and FSM reports.
- Progress will be reported through the evaluation, leadership and center-level meetings, and will also be communicated to our stakeholders.
- ClearCATS will launch later this year, providing a central repository for gathering and viewing the data.

The Institute has accomplished a lot in the past year, but we still need to focus our efforts and actively report on our progress. The initiatives will both be in place through the CTSA grant and provide greater insight and accountability internally and externally. This is also part of the Northwestern Medicine Initiative, which Dean Jameson mentioned during the recent State of the School address.

We need your support in making this a smooth process—part of that includes sharing data and ensuring your team is on track. If you have questions, please ask your manager, those involved with the process from your team, those on the Evaluation Working Group, or you can come to me.

Regards,
Phil

Northwestern University Clinical and Translational Sciences
Institute Secures More Than \$2 Million in NIH/ARRA Funding (continued from cover)

and co-director, Center for Education and Career Development, NUCATS Institute, and Bill Miller, PhD, professor of Chemical and Biological Engineering at McCormick School of Engineering (MCC).

■ Centralized Clinical Studies Informatics Infrastructure.

Developed with the University Office of Research, NMH Office of Research Compliance, and NMFF, the web-based workflow system, eNOTIS, will provide the ability to share clinical trials information, integrate with the IRB and centralize process across the University to advance the pace at which clinical and translational research is conducted. The project is led by Warren Kibbe PhD, research associate professor, NUCATS Institute and the Robert H. Lurie Comprehensive Cancer Center, Feinberg School of Medicine (FSM).

■ **Biomedical Intelligence Core.** Building on partnership between NUCATS and Northwestern's Kellogg School of Management, the goal of this collaboration is to better understand the potential application of and addressable market for biomedical research projects. Identifying business literacy and technology transfer issues earlier in the process will speed the translation of treatments into health solutions. The project is led by Alicia Löffler, PhD, Kellogg professor and director for the school's Center for Biotechnology Management.

■ **Science of Team Science Learning Module.** Northwestern leads this emerging discipline examining the process by which transdisciplinary research teams organize themselves. Researchers from FSM, Kellogg School of Management and the School of Education and Social Policy are involved in this project, which will produce online learning modules, intended to draw new students into the field. The project is led by Bonnie Spring, PhD, professor, Department of Preventive Medicine and director of Behavioral Medicine, FSM and Kemi Jona, PhD, research associate professor, School of Education and Social Policy and Department of Computer Sciences.

"The NUCATS Institute, through partnerships with other schools at Northwestern University, is clearly demonstrating strong commitment to building interdisciplinary teams," said NCRR Director Barbara Alving, M.D. "The ARRA funding will provide training in business principles and technology transfer, as well as access to robust informatics infrastructure."

"The ARRA funding will significantly advance our progress toward the NUCATS mission," said Dr. Philip Greenland, director of the NUCATS institute. "Each award promotes our ability to catalyze research collaborations across the University and provides an infrastructure for innovative translational research and entrepreneurship. More broadly, the awards will support job creation and economic goals associated with a research enterprise."

The NUCATS Institute is an integral link in Northwestern University's clinical and translational research enterprise, including schools, partners and medical affiliates. The Institute accelerates translational innovation by providing research teams with consultative resources and expertise. NUCATS is valued as a complete partner and is strategically positioned to remove the roadblocks that slow interdisciplinary clinical and translational research. This approach promotes a dynamic research environment focused on discoveries and solutions to improve human health.

Grantsmanship Overview

The research landscape is becoming more competitive and preparing a grant proposal that stands out from others is critical to securing research funding. The NIH has mandated that in January of next year, the structure of grant proposals will change significantly. At the same time, junior faculty can no longer rely solely on other colleagues for assistance, as their time is increasingly scarce.

A course offered by NUCATS' Research Team Support (RTS) in conjunction with Northwestern's School of Continuing Studies (SCS) provides research professionals with detailed guidance on the grant development process, including new NIH guidelines.

The course, **Grantsmanship for the Research Professional**, aims to teach and enhance skills associated with effective grant opportunity identification, preparation, writing, and submission to investigators engaged in research, as well as research administrators responsible for pursuing grant opportunities. The course is appropriate for researchers at all levels, graduate students through faculty and research administrators conducting or supporting research in the biological, medical, and natural sciences; physical sciences and mathematics; social/behavioral sciences; engineering; law; education; and technology development.

Getting training on grant writing from Holly was great in many ways; it gave me a new perspective, a new vision, it opened up many doors right in front of me, the doors that I did not know even existed; it gave me the energy, the courage that I needed to write, to write more and to write better to reach the ultimate goal of explaining my science and to align my goals with the betterment of human health.

Hande Ozdinler, PhD, Director of Les Turner ALS Laboratory II and recipient of NUCATS translational Innovation Award

This course is currently offered three times a year, both on the Chicago & Evanston campuses. Northwestern-paid employees are eligible for a significant tuition discount through their benefit plan. The tuition fee can also be paid using a Northwestern chartstring (contact the **Human Resources Benefits Division**) or by credit card on the course registration site **CAESAR**.

This two day course is time well spent—success in the first submission of a grant proposal translates to time spent conducting research rather than revising a proposal and waiting another funding cycle.

RTS also offers custom training sessions and workshops on the topic of grantsmanship and finding funding opportunities upon request. Contact Holly Falk-Krzesinski, PhD, h-falk@northwestern.edu, 3-0889.

Science of Team Science—A NUCATS Original

*What makes a research team successful?
How does collaboration happen?*

The Science of Team Science looks for the answers to those questions to better understand the formation of collaborative teams pursuing translational research. Investigators supported by the NUCATS Research Team Support (RTS) conduct research in this new interdisciplinary field.

Under Professor Noshir Contractor, Science of Networks in Communities (SONIC) and Professor, Industrial Engineering and Management Science (McCormick School of Engineering and Applied Sciences), Management and Organizations (Kellogg School of Management), and Communications Studies (School of Communication) and NUCATS research assistant professor, Marta Sales-Pardo, one study in progress examines the impact of NUCATS in the creation of new collaborative teams and the characteristics of teams that lead to successful interdisciplinary research. In the study's first phase, applicants from the first round of pilot grants are analyzed



Professor Noshir Contractor

in order to establish a baseline measure of what collaborations are being formed and the common traits of these collaborations related to tenure and department affiliation. So far, this analysis revealed that there is no significant difference in the number of pilot grant applicants within different stages of the tenure career track and that the majority of proposals (55%) were submitted by teams of investigators. A full 76% of these teams involved investigators affiliated in different departments. The second stage will analyze subsequent rounds of funding to assess whether the scientific community reached by NUCATS is growing and the emergence of new collaborations as well as keep track of the evolution of previous collaborations with the aim of identifying the traits of successful collaborations that will enable the establishment of guidelines for the recommendation of potentially successful collaborations among scientists.



Professor Brian Uzzi

Two additional studies, conducted by Professor Brian Uzzi of Kellogg School of Management, Co-Director, Northwestern Institute on Complex Systems and Professor of Management and Organizations (Chair; Kellogg School of Management), Sociology (Weinberg College of Arts & Sciences), and Industrial Engineering and Management Science (McCormick School of Engineering and Applied Sciences) are examining 1) how on-line, self-organized communities stimulate and facilitate scientific collaboration and 2) the depth of a collaborative relationship from email analysis. Currently little research exists on scientific collaboration within on line social networks (OSN). Uzzi and his team have been investigating the development of a virtual community called Nature Networks (nature networks. com), which was started by the journal *Nature*. It is a free online community designed to promote collaboration among scientists, journalists, researchers, students, writers and inventors. By examining usage data collected since the site began in 2006, preliminary findings suggest that this particular OSN has not significantly promoted new ties among scientists and their potential collaborators, but rather provides another channel for the types of ties formed in the physical world. As the project progresses, the team will seek to understand how to promote diverse connections among researchers.

The second study looks at collaboration through unobtrusive measures—in this case, email. No research currently exists that examines how email can be a predictor of a person's "social network." The study analyzes the associations between self-reported network data and more than 1.4M emails exchanged among 1000 plus directors in a global services firm. The findings, which are currently under editorial review, shine light on how to convert email, which includes a person's entire communication network, into social network data.



Commercialization Seminars Continue

Mark your calendars for the 2009-2010 academic year:

Medical Device Development 101
Dec. 2009

Diagnostics Development 101
Jan. 2010

SBIR 101
Feb. 2010

Jim Bray, Assistant Director, Center for Translational Innovation, NUCATS Institute
Licensing University Inventions

March 2010
Alan Hauser, Director of Business Development, Technology Transfer Program
Legal Issues for Entrepreneurs

April 2010
Esther Barron, Clinical Assistant Professor of Law, NU School of Law; and Assistant Director, Bluhm Legal Clinic's Small Business Opportunity Center (SBOC)
Steve Reed, Clinical Assistant Professor of Law, NU School of Law; and Supervisor, SBOC

Keep up to date on the Commercialization Seminar series at:

<http://www.nucats.northwestern.edu/education/seminars-lectures/commercialization/index.html>

Save the Date: NUCATS Innovation Day, May 7, 2010

Following BIO 2010 International Conference held in Chicago

NUCATS will host **Innovation Day on May 7th, 2010**. Showcasing translational research projects across the University and medical affiliates, this year the event falls on the heels of one of the largest conferences dedicated to Biotechnology Research, the **BIO 2010** International Convention.

Similar to last year's Innovation Day, recipients of the spring round of NUCATS' **pilot grant program** will be named during the event, which provide funding for new high risk/high reward projects that address significant unmet needs in clinical research. The RFA for the fall round will be released in early November, and will close December 6. Full time faculty at NU, and full time investigators based at Children's and RIC are eligible to apply. Young investigators and proposals with co-investigators are especially encouraged, as are proposals from multiple institutions or schools, and those with new collaborators.

BIO hosts its own Translational Research Forum during the conference and NUCATS is also coordinating efforts across the University to build a strong presence. According to Jim Bray, assistant director for NUCATS' Center for Translational Innovation "Panels and talks at the Translational Research Forum will focus on current and planned future efforts among academic, government, industry, and community groups to improve and streamline the translational research process." NU also stands to have several faculty involved in panel discussions when general convention programming is announced early next year.

Translational Innovation Pilot Grants are now open for submission and will close December 6th. For more information contact Jim Bray, j-bray@northwestern.edu

NUCATS' Pilot Grant Award Winner, Teri Odom, Presents During Mornings at McCormick Series

On Thursday November 12, Teri Odom, one of NUCATS' pilot grant award winners, who also holds a Joint Appointment with McCormick's Materials Science and Engineering Department and Weinberg College of Arts and Sciences Chemistry, presented at a Mornings @ McCormick event, titled "David vs Goliath: Can Nanostructured Surfaces Beat Commercial Instruments for Sensing?"

This talk described how nanostructured metal surfaces offer an inexpensive and unique alternative to label-free sensing, addressing how advances in nanofabrication can compete with established technology because of a combination of factors: (1) simplicity in manufacturing nanostructures and (2) unexpected fundamental discoveries.

The presentation also showed how substrates patterned with nanopyramidal arrays exhibit extremely narrow resonances that result in very high sensitivities. Odom's study also observed that when the nanopatterned surfaces were made from different materials (other than gold), different protein binding efficiencies were found. These findings could have consequences for screening molecules and drug discovery.

Register Online for the Mornings @ McCormick series at:
<http://www.industry.northwestern.edu/mornings/registration.php>

NUCATS Announces Three New MCTS Program Scholars

In the summer of 2009, NUCATS announced plans to host a Multidisciplinary Clinical and Translational Scientist (MCTS) Scholar Program competition. Many qualified candidates in the Northwestern University community applied for the MCTS Scholar Program competition highlighting the interest in and need for additional mentored research experiences among junior faculty.

The KL2 Program Advisory Committee, chaired by Richard Pope, MD, evaluated and selected scholars for the award capable of both working effectively within multidisciplinary clinical research teams and shaping the next generation of clinical and translational researchers. The KL2 Program Advisory Committee is pleased to announce that invitations have been extended to the following individuals to participate in the Multidisciplinary Clinical and Translational Scientist (MCTS) Scholar Program:

- **Zeeshan Butt, PhD**, Research Assistant Professor, Departments of Medical Social Sciences and Surgery (Division of Organ Transplantation) and Institute for Healthcare Studies for *Development of Patient-Reported Outcome (PRO) Tools for Kidney Recipients and Living Donors*
- **Emily Rogalski, PhD**, assistant research professor, Cognitive Neurology and Alzheimer's Disease Center for *Anatomy of anomia in primary progressive aphasia*
- **Kelly Lowry, PhD**, Assistant Professor, Department of Psychiatry and Behavioral Sciences for *Exploring effects of parent feeding styles on child eating and weight in early childhood*.

As part of the award these scholars will receive two years of support for their proposed research as well as mentoring to assist in furthering the research projects. The NUCATS Institute and Program Advisory Committee would like to extend appreciation to all who applied for the scholarship in support of our efforts to train new translational investigators.

CRC Basic Training Course Dates for 2010

This three-day intensive training program, held at the NUCATS Institute, is designed to meet the needs of coordinators who have less than one year of experience or who have never received formal training. It is useful to anyone who requires a fast, thorough introduction to clinical research trial conduct, Good Clinical Practices (GCPs), and the federal regulations governing research. The class is geared toward providing practical information to get students "up and running" in the clinic, with many tools and templates to assist with study implementation.

Dates for 2010 are:

January 11–13	May 3–5
January 25–27	June 7–9
February 8–10	July 12–14
March 8–10	August 9–11

Topics Addressed in the Course Include:

- Informed Consent
- Clinical Trial Initiation and Budget Negotiation
- FDA Forms and Procedures
- Regulatory Documents and Binder Maintenance
- Source Documents
- Study Initiation and Close-Out Visits
- Subject Recruitment, Compliance and Retention
- Drug Compliance, Storage, and Documentation
- IRBs, IRB Submissions, and HIPAA
- Adverse Events and Safety Monitoring
- Quality Assurance Audits and Monitor Visits
- Preparing for FDA Audits

If you have any questions, or if you would like more information, please contact us at nucats-ed@northwestern.edu or call our Office of Education and Training at 312-503-7952.

NUCATS PRESENTS WITH COLLEAGUES FROM WEILL CORNELL MEDICAL COLLEGE AND ROCKEFELLER UNIVERSITY AT AMERICAN EVALUATION ASSOCIATION EVENT IN NOVEMBER

Sheila Kessler presented: "Clinical and Translational Science Awards (CTSA) Evaluators' Survey: An Overview" at this year's annual conference of the American Evaluation Association in Orlando. The presentation was the result of collaboration between Northwestern and colleagues from Weill Cornell Medical College and Rockefeller University's CTSA institutions and presented as a multi-paper session of CTSA Evaluators. The presentation highlighted structured input gathered from their colleagues towards the development of a basic CTSA Evaluators Survey. The survey investigated common trends in three critical areas: 1) the management of evaluation, 2) data sources and collection methods, and 3) analysis or evaluation activities currently being conducted. The goal of this survey was to provide a comparative overview of all current CTSA Evaluators, to allow each team to solicit best practices, and to allow the various CTSA evaluation teams to orient themselves relative to their peers."

A Look at LatticeGrid—Finding New Collaborations Is Easier With Social Networking Tool Aimed at Researchers

Bonnie Spring Campus Chicago Address 680 N Lake Shore Dr #1102 CH D335 Telephone +1 312 908 2293 Email bspring@northwestern.edu		Academic Title Professor Primary Department Preventive Medicine Other Appointments Psychiatry and Behavioral Sciences Center Affiliations Robert H. Lurie Comprehensive Cancer Center	
Publications (15) Lynch, E.; Liu, K.; Wei, G. S.; Spring, B.; Kiefe, C.; Greenland, P. The relation between body size perception and change in body mass index over 13 years: the Coronary Artery Risk Development in Young Adults (CARDIA) study. <i>Am J Epidemiol</i> (2009) 169:857-866. Mohr, D.C.; Spring, B.; Freedland, K. E.; Becker, V.; Areen, P.; Hollon, S. D.; Ockene, J.; Kaplan, R. The Selection and Design of Control Conditions for Randomized Controlled Trials of Psychological Interventions. <i>Psychother Psychosom</i> (2009) 78:275-284. Pagoto, S. L.; Spring, B.; McChargue, D.; Hilsman, B.L.; Smith, M.; Appelhaus, B.; Hedeker, D. Acute tryptophan depletion and sweet food consumption by overweight adults. <i>Eat Behav</i> (2009) 10:36-41. Spring, B.J. Health decision making: lynchpin of evidence-based practice. <i>Med Decis Making</i> (2008) 28:866-874. Spring, B.J.; Cook, J. W.; Appelhaus, B.; Maloney, A.; Richmond, M.; Vaughn, J.; Vanderveen, J.; Hedeker, D. Nicotine effects on affective response in depression-prone smokers. <i>Psychopharmacology (Berl)</i> (2008) 196:461-471. Spring, B.J.; Schneider, K.; Smith, M.; Kendzor, D.; Appelhaus, B.; Hedeker, D.; Pagoto, S. Abuse potential of carbohydrates for overweight carbohydrate cravers. <i>Psychopharmacology (Berl)</i> (2008) 197:637-647. Hilsman, B.L.; Spring, B.J.; Pingitore, R.; Munafò, M.; Hedeker, D. Effect of tryptophan depletion on the attentional salience of smoking cues. <i>Psychopharmacology (Berl)</i> (2007) 192:317-324.		Bonnie Spring Graph Interactions Co-Authors: Brian Hilsman Kiang Liu Philip Greenland David Mohr Arlene Hankinson Similar Investigators: Alan Dyer 2752 Zoran Martinovich 1543 John Csermanský 1381 Joel Charrow 1317 Mark Reinecke 1213 Linda Van Horn 1196 David Baker 1165 Helen Binns 1122 Jerilyn Logemann 978 Mercedes Carmelton 977 Juned Siddique 962 M. Marseel Mesulam 947 Robert Bonow 899 Todd Parrish 890 Jay Yen 876 ...more investigators	

The NUCATS Biomedical Informatics Center (NUBIC) has launched a new online knowledge management system linking researchers from disparate disciplines. Building on the capabilities of existing social networking and knowledge management platforms, LatticeGrid assesses collaboration patterns using institutional and public data such as PubMed, eIRB, and pre-award and post-award systems. LatticeGrid integrates and visualizes these data around organizational constructs such as centers and departments to build models of collaboration patterns. LatticeGrid is interoperable with other collaboration tools such as the Harvard Profiles system. However, LatticeGrid is uniquely able to define collaboration teams “on the fly” and provides multiple ways to represent

and map physical and virtual relationships between investigators.

LatticeGrid models also enable evidence-based decisions about how best to manage and direct organizational change to maximize the effectiveness of translational science initiatives. Toward this effort, LatticeGrid enables biomedical research organizations to monitor and measure more effectively collaboration and funding patterns and assess the effect of organizational and policy change. Understanding how shifts in institutional structure and policy affect translational science patterns of collaboration and funding is of fundamental importance to biomedical research community and the goals of the NUCATS Institute. This knowledge provides a mechanism to evaluate the “return on investment” in team science efforts.

The core of LatticeGrid can be viewed on the Robert H. Lurie Comprehensive Cancer Center of Northwestern University website at <http://latticegrid.cancer.northwestern.edu> and at the Northwestern Feinberg School of Medicine website at <http://latticegrid.feinberg.northwestern.edu>. The UCSF website is at <http://latticegrid.cancer.ucsf.edu>. The Fox Chase website is at <http://staffpubs.fccc.edu>.

The LatticeGrid system is and will continue to be open source to allow sharing with other Clinical and Translational Science Award (CTSA) institutions.

“Managing and tracking publications have always been a challenge for research universities. The NUBIC team saw the potential for an open source solution in addressing this need, and LatticeGrid is the result,” said Warren Kibbe, associate director of NUBIC, Director of Bioinformatics in the Robert H. Lurie Comprehensive Cancer Center, research associate professor in the Center for Genetic Medicine. “We’ve had great response from the biomedical research user community so far and plan enhancements as we incorporate their feedback and ideas for enhancements to the application.”

LATTICEGRID CAPABILITIES SNAP SHOT:

- Identify the network of collaborations that currently exist in a biomedical research organization.
- Highlight the expertise and existing collaboration patterns for an individual in that organization.
- Analyze changes in the pattern of collaboration for a given individual, virtual organizational unit, academic unit, or other organizational structure over time.
- Facilitate the application of this information to the promotion and support of intra- and inter- institutional collaboration.

eNOTIS Subject Enrollment

eNOTIS is a web-based research subject enrollment application for Northwestern University. Developed by the NUCATS Institute’s Northwestern University Biomedical Informatics Center (NUBIC), eNOTIS is designed to track all research accrual on research studies under IRB oversight, which includes any study run through NUCATS, NMH, NMFF and RIC. eNOTIS allows researchers to see if subjects are participating in multiple studies, view accrual information and read general descriptions of studies on a current and historic basis. However, eNOTIS users only have read/write access to specific details on their own studies and subjects.

eNOTIS will be the standard subject enrollment platform for NU and meets recent FDA guidelines on electronic reporting,

addressing a mandate that accrual information be tracked, validated and reported periodically to clinicaltrials.gov. eNOTIS will reduce or eliminate the need for manual study tracking, which is often a resource-intensive part of clinical research, especially when studies involve multiple disciplines, clinics and coordinators.

The first phase, launching in Winter 2010, is for interventional studies, with plans in place to expand to other areas of clinical research management over the coming months. All study coordinators, PIs, and department leadership who are administering multiple studies will have access to eNOTIS. Training and documentation will be available at the eNOTIS website in August. Currently, NUBIC would like to identify study coordinators and other clinical research team members to participate as early adopters in a beta (pre-launch) evaluation of eNOTIS.

For more information contact enotis@northwestern.edu.

Clinical Research Unit (CRU) Announces New Space

A new satellite CRU suite is now open on Galter 11, providing three additional exam rooms for clinical research. The space also includes lab equipment for blood work and assays, complementing the existing space in Feinberg 10th floor. The expansion is part of a larger plan to expand cost-effective CRU programs across the NU medical enterprise over the next two years.

The CRU is one of the many resources that NUCATS offers to assist investigators in translating research discoveries to improve human health. In an effort to meet the needs of investigators from over fourteen Feinberg School of Medicine departments or divisions, as well as investigators at Children's Memorial Hospital, those interested in engaging the CRU for services can submit protocols online at: http://www.nucats.northwestern.edu/centers/ccr/investigators_info.html

CRU Orientation Schedule for Remainder of 2009

FOR RESEARCH PERSONNEL WHO USE THE CLINICAL RESEARCH UNIT OR CRU

Thursday, 11/19/09 1-2:30 p.m.

Location: Feinberg 3B

Part II: Orders and In-service

Thursday, 12/17/09 1-2:30 p.m.

Location: Feinberg 3B

Part I: Seeing Subjects on CRU

Center for Clinical Research (CCR) Continues Transition

The CCR continues transitioning under the new Clinical and Translational Research Award (CTSA) parameters and has changed administrative policies on how the center's services are charged to investigators. The focus of these changes are to continue providing exceptional facilities, services and support staff, while maximizing budgetary resources. This is not only an initiative across the NU medical enterprise, but is also aligned with goals for better transparency and accountability of funds within NIH/NCRR.

As a result, investigators are required to build funds into their grants for use of CCR resources, including the Clinical Research Unit and Regulatory Support. NUCATS is currently working on a consultative basis with several investigators to ensure a smooth transition.

As an example, Dr. Bill Lowe, Dr. Mary McDermott and Peggy Mitchell analyzed costs associated with a study that Dr. McDermott is conducting on functional impairment and decline in persons with lower extremity peripheral arterial disease (PAD). The team determined that there were multiple areas where costs could be reduced or reassessed based on more accurate usage data or by scaling processes, such as lab tests, on an aggregated basis. Coordinators were also involved and determined that by shifting the consent process to a different setting, costs could also be reduced. These types of analyses will help the CCR improve operations across research services.

By January 1, 2010, all investigators will be required to include clear, accurate estimates for the use of CCR services in their grant proposals. The NUCATS team will be available to support investigators and their teams in the process to ensure existing studies are migrated to the new guidelines effectively. Questions can be directed to Peggy Mitchell, Administrative Director at, 312-503-2242, peggy-mitchell@northwestern.edu

**United
Way**



Only 6 weeks left to contribute to the
2009 United Way Northwestern Campaign Fund Drive.

[Click here](http://www.northwestern.edu/unitedway) for more info or visit www.northwestern.edu/unitedway

NUCATS IT Support

As many of you may know there have been recent changes to desktop support, which is now provided directly by Brandon DeLallo through DSS. For many of you, the greatest difference is that you can contact Brandon directly via email at bdelallo@northwestern.edu.

What does this mean for you?

- Desktop support is still handled by Brandon DeLallo

- You may stop by the office or preferably send an email requesting service
- Netid and new employee requests will continue to go through Margarita Chung, m-chung@northwestern.edu
- MIS will continue to provide the Email and File Server services for NUCATS, but requests for service will need to be directed through Brandon DeLallo

Look for more changes in the coming months!

CERC Announces Seed Grants

Both the Practice-Based Research Program (PBR) and Alliance for Research in Chicago-land Communities (ARCC) recently announced new RFPs for seed grants.

The PBR Seed Grant Program aims to build partnerships between community clinicians and NU affiliated full-time faculty members to foster study of research ideas initiated in the community and facilitate the gathering of pilot data needed for larger, externally-funded projects. Any NU-affiliated faculty member partnering with community clinicians or a community clinician partnering with an NU faculty member can apply. Research originating in community clinical settings is of particular interest. Previously funded projects have had a budget ranging from \$13,000 to \$40,000.

Pre-proposal decisions will be communicated by December 1, 2009. Full proposals are due in February of 2010 and funding decisions will be announced by April 1, 2010.

The ARCC seed grant, now in its third round, aims to build the capacity of communities and Northwestern University academic partners to engage in authentic collaborative research partnerships through two types of grants, Partnership Building grants and Community-Based Participatory Research (CBPR) Implementation grants. Required letters of intent are due December 4. Invited full proposals will be due February 26.

A total of \$110,000 is available.

Partnership Building grants have a maximum amount of \$10,000 per grant with a grant period duration of up to 12 months; CBPR Implementation grants have a maximum amount of \$30,000 per grant and a duration of up to 18 months. The requested project amounts and timeline should be designed to fit the needs described in the proposal. The number and amount of awarded grants will be based on the quantity and quality of submitted proposals. Award amounts will vary depending on the scale of the project.

Those interested should review the web site information for more details:

<http://www.nucats.northwestern.edu/centers/cerc/PBR/pbr-seed-grants.html>

<http://www.nucats.northwestern.edu/centers/cerc/CBPR/cbpr-seed-grants.html>

CERC Partners with Several CTSA Cohorts in ARRA Funded Initiatives and Sharing of Best Practices

The Community-Engaged Research Center (CERC) has been actively working with several CTSA institutions on projects through ARRA funding. In most cases, CERC will serve as an advisory resource, providing expertise in a particular area of program development:



- **The University of Chicago**—aimed at increasing U of C's capacity for community-based participatory research (CBPR), this initiative supports infrastructure development to improve bi-directional communication between the University and community partners.



- **Indiana University**—this initiative creates a set of resources or tools that will help existing and future CTSA's facilitate participatory research with their community partners. The team includes a strong network community partners and CBPR teams from institutions across the region.

Tufts



- **Tufts University/Harvard**—this program seeks to build capacity in community-based organizations to participate in community engaged research by providing relevant, interactive training sessions that utilize local examples and that support participants as they develop projects for their organizations.



- In addition, in September CERC hosted Maureen A. Smith, MD, MPH, PhD, Associate Professor, School of Medicine and Public Health, Assistant Director, **University of Wisconsin** Institute for Clinical and Translational Research for a discussion that included CERC community partners, faculty and staff. Smith provided an overview of their experience building community-academic partnerships for research at the University. The UW-M program has gained solid traction in engaging with diverse community partners across the state, and has also been successful in generating foundation investments. The discussion provided an interesting contrast in programs. For example, UW-M, much of their community-based participatory research engages with rural populations vs. CERC's urban focus. UW-M was impressed with CERC's approach to seed grants and that these opportunities were available to community organizations, and the overall level of equanimity in CERC's relationships with community partners.

Upcoming Events

Northwestern University Feinberg School of Medicine and McCormick School of Engineering
are pleased to announce the

Dean's Grand Challenge Lecture Series in Engineering and Medicine.

The series of six lectures brings together engineering and medical faculty members to catalyze interdisciplinary collaboration.

The first will be held on November 19, 2009 with a post-event reception hosted by the NUCATS Institute intended to further collaborative discussions. Join us!

4:00 p.m., Hughes Auditorium,
Robert H. Lurie Medical Research Center
303 E. Superior, Chicago Campus

CERC Seminars

Wednesday, November 18

The Pediatric Practice-Based Research Group at 25 Years: Implementing Innovation in Primary Care

Speaker: Adolfo Ariza, MD, Associate Director,
Pediatric-Practice Based Research Group,

Time: 11 am–12 noon

Location: Chicago Campus: Ward 5-230, Chicago Ave.
and Fairbanks. Video Conference Location:
Children's Memorial Research Center: 1731 N.
Marcey Conf Room A&B

December 9

The Impact of Health Screening via PDA on Adolescent Obesity Risk Counseling: Using a Hand-Held Computer Data Collection Device to Screen Vulnerable Populations.

Speaker: Ardis Olson, MD, Dartmouth Medical School

Time: 2:30 pm–4:30 pm

Location: Lakeview Conference Room, 11th Floor, Rubloff Bldg.

Drug Development Short Course— From the Bench Through the Clinic

Location: University Technology Park at IIT
3440 South Dearborn Street, Chicago, IL 60616

Dates: November 20, 2009 – Discovery to IND
December 7, 2009 – Phase I to NDA

Lewis Smith, MD, professor of medicine and co-director, Center for Education and Career Development, NUCATS Institute and David Johnson, PhD, associate director, Center for Translational Innovation Northwestern University are both speaking at the 12/7 event.

Sponsor: Catalyzing Collaborations between Industry and Academia Working Group and the Illinois Institute of Technology

Registration: <https://payment.iit.edu/item.php?item=440>

Save The Date: April 22-23, 2010
Science of Team Science Conference

Welcome NUCATS New Hires!

Kirthika J. Padmanabhan

Research Analyst/Report Associate
NUBIC–Enterprise Data Warehouse

Robyn Mann

Coordinator of Grants and Administration
Center for Education and Career Development

Josh Lamb

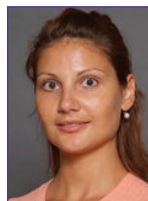
Program Assistant
NU Biomedical Informatics Center

Michael Wilson

Temp Financial Assistant
NUCATS Institute – Administration

Lina Cho

Temp Receptionist/Program Assistant
NUCATS Institute – Administration



Marta Melar-New joins as Project Manager, Innovation-to-Commercialization Group/Biomedical Intelligence Core in November. This is a joint effort between NUCATS and the Kellogg School of Management. She received her PhD in Microbiology and Immunology from UIC in 2006 (taking only 3 years to do so) and just completed a post-doc in Dr. Lou Laimins' lab. She's also earned a pregraduate Business Administration Professional Development Certificate from NU in 2007 and is a current student in the part-time Kellogg MBA program (Health Enterprise Management and Entrepreneurship and Innovation Majors). For the past year she has been an Entrepreneur-in-Residence with the Technology Transfer Program at NU working to develop a business plan around university intellectual property.



Welcome Baby Fu, 9/25/2009!
Congratulations to Dong and Family!

Follow Clinical and Translational Research on twitter

Want an easy way to keep up on Clinical and Translational research #ctresearch? Follow the conversation on Twitter. Many CTSAs are posting news, events and updates including NUCATS @NUCATSInstitute. You can also follow @HarvardCatalyst, @octriadm, CTCISCEProgram, @OCTRIDirector, @ICTSIowa, & @ncrr_nih_gov.

Q4 Birthdays

Marko, Darlene	10/3	De Luca, Colleen	10/31
Crespo, Francisca	10/4	Remich, Robin	11/16
LeBailly, Susan	10/5	Sanchez, Maria	11/20
Fu, Dong	10/10	Agarwal, Anita	11/22
Greenland, Philip	10/11	Chung, Margarita	11/26
Patel, Jignesh	10/16	Harakal, Donna	12/10
Mitchell, Peggy	10/28	Kinsella, Annette	12/27

NUCATS' "High-fives" Recognize great work across the Institute

A new feature, each issue of NUCATSnews will publish "high-five" notes of recognition showcasing people who have done exemplary work in support of the Institute. Anyone can submit "high-fives" to Elizabeth Kollross at e-kollross@northwestern.edu.

Brandon DeLallo

Brandon has been *amazing* at moving my project manager and myself onto FSM's systems and computers from other NU systems and computers. He has been so efficient and responsive to our needs—which have been time sensitive, it feels as if we've had our own personal IT rep! There was one night in particular last week that Brandon stayed very late making sure that the software that would allow syncing between my calendar and Blackberry got installed on my computer, and then he even called me later that night after he got home to make sure everything was working correctly!

—Holly Falk-Krzesinski, PhD

Jill Bockes

Jill is an outstanding employee who always goes the extra mile and seems happy to do it. Last year, while working on the CTSA annual report Jill developed file structures to keep the required information organized and any time she saw a need she did what she could to address it. What I find so admirable is that Jill is not responsible for any part of the annual report process. She saw we needed help and jumped in as if it was one of her primary responsibilities.

—Colleen DeLuca

Mary Ratliff

Mary has gone above and beyond to develop a new initiative for the Center for Education and Career Development. She leads a team in the development of online courses to enable clinical research support staff to learn concepts of clinical research and contribute to successful clinical research conduct. The Clinical Research Online Course Library includes four courses that provide an introduction to clinical research, an overview of human subjects protection, highlight key aspects of good clinical practice and address billing compliance best practices. Courses are designed to be completed by all staff who interact with clinical research subjects. Mary managed surveying clinical research subject matter experts to define the course library, the instructional design process and course development. The courses can be delivered through NUCATS Online or licensed to hospitals and clinics to deliver through their own learning management systems. Mary also negotiated a contract with a vendor who will distribute the courses nationwide. This initiative will enable NUCATS to have a role in educating clinical research professionals throughout the US.

—Paula Carney

Tyler Smith

Tyler Smith recently tackled a project head-on for the RTS and NUBIC teams. The assignment was to create a custom intake form for use in surveys within a tight schedule. He made the form extremely usable, and flexible enough so it can be reused in other areas, as needed. This is another great example of his work. Tyler was promoted on August 31st, and is now working with the Evaluation and Communication Teams on a full-time basis.

—Sheila Kessler

Jim Bray

Earlier this Fall, Jim learned from a NUCATS' partner that Sen. Arlen Specter wished to speak to an NU Investigator. Bray contacted Northwestern's Office of Sponsored Research (OSR) and Government Relations quickly to identify someone who would be available and adequately prepared for a phone call with the Senator. Jim managed to coordinate all of the activity in under an hour.

—Elizabeth Kollross

To Michelle Melin-Rogovin—
We're all really proud of you!
From the entire NUCATS Team

Teamwork

Over the past year, a team consisting of, Anita Agarwal, Donna Harakal, Annette Kinsella, Hilary Reach, Marcella Oliver, Thomas Hancko, Lew Smith, Kelly Carroll and Julie Johnson have persevered in tackling a tough assignment in resolving myriad issues related to a complex study. The year-long project management effort included working with several groups at NU including IRB, ORI, Regulatory, Compliance, HR and others. Even the study monitor, who initially was leery, is very impressed with the effectiveness of the NUCATS' response and our team effort. A big thank you from me to all of you as I was very proud to listen to her praises knowing where we started on this mission. We have more to do and we will complete the task and learn from this experience.

—Barb Ferry