

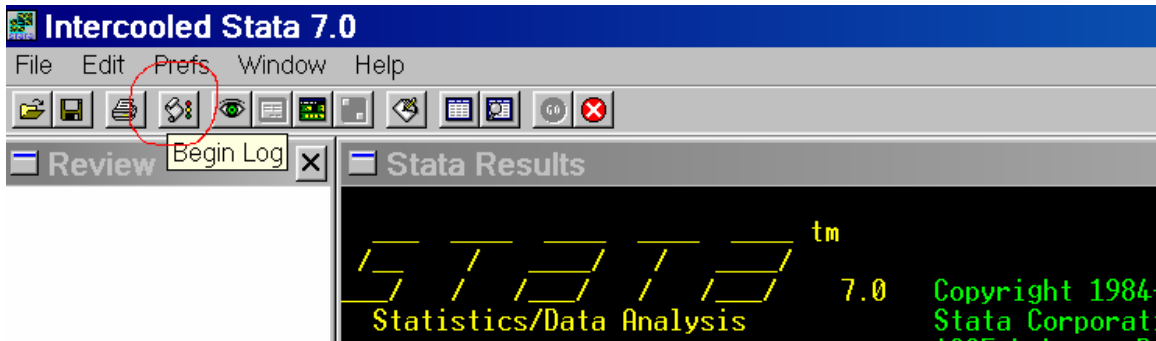
Mgmt 469

Creating and Printing a Stata Log File

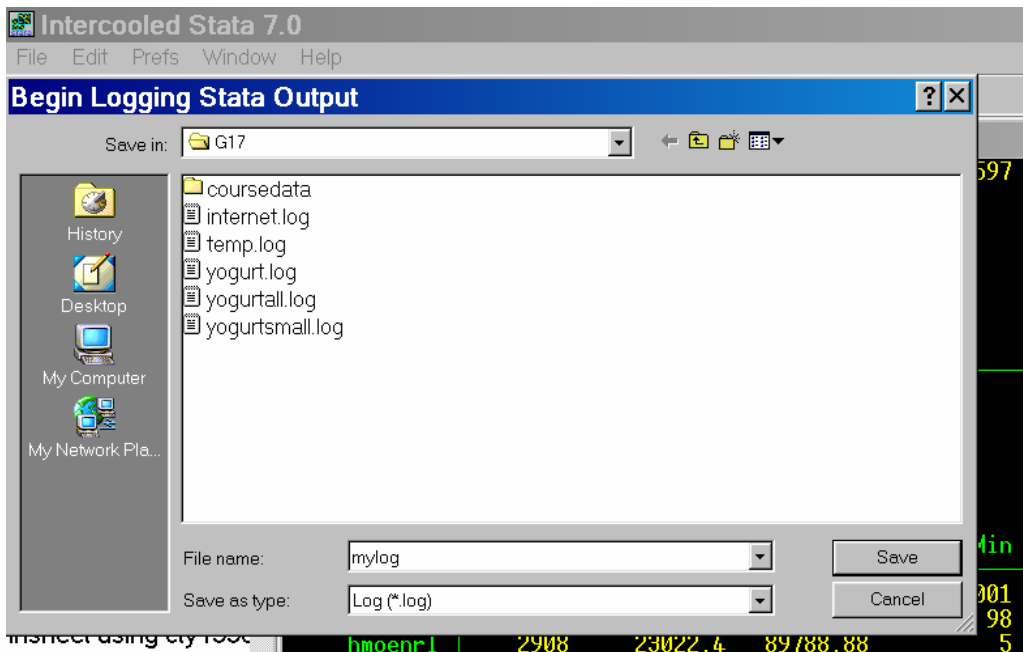
A Stata log file is an electronic record of your commands and results that can be printed or saved to a file. Here are the steps you need to take to create, print, and save a log file.

GUI approach:

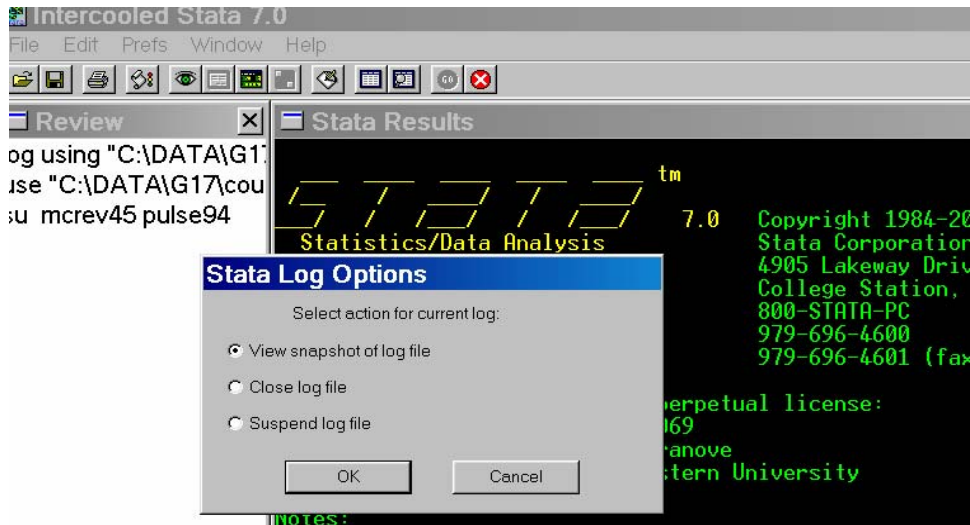
1) Click on the log button (This is the fourth button. It appears as a scroll of parchment with tiny green, yellow, and red buttons next to it.)



2) If you do not have an active log (i.e. you have not already opened a log file), then Stata gives you the option to open one. You can specify any file name for your log. The log suffix should be .log, rather than the .smcl Stata uses as a default. Here, I chose the name mylog.log



3) If there is a currently active log, then when you click on the log button, it gives the option to view the log, close it, or suspend it. If you suspend it, the log remains open, but results will no longer be added to it until you choose to continue it.



Interactive approach:

Make sure you are in the folder where you want to save the log file, or else be sure to specify the path as part of the filename. Then type:

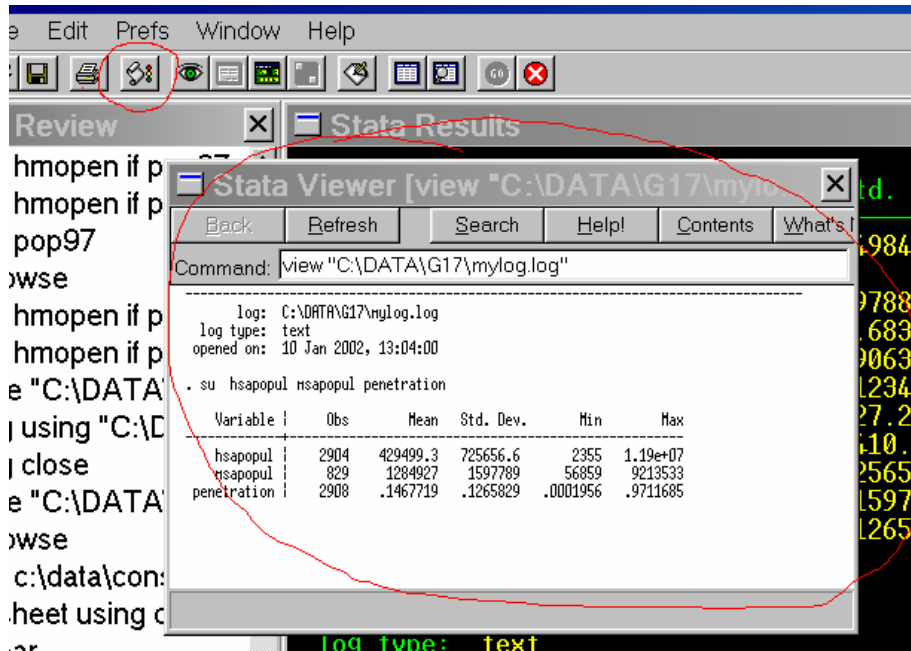
log using filename,log

or

log using filename,log replace (if the filename already exists)

You can suspend entries into the log by typing **log off**. You can resume entries by typing **log on**. You can close the log completely by typing **log close**.

When you want to view your log, you can click on the log button and select “view snapshot of log file.” (See above.) You can then examine your results, as below.



At some point you will want to print your log. One way to do this is to open the log file using MS Word. But you can also print directly from Stata. To do this, make sure you can view it (see step 5). Then click on the File command, and select “print viewer”. Note that after you do this, Stata will give you a series of options to select your printer, label the output, and even to adjust the font. (I find that size 11 font works well.)

