

# Learning and Bargaining in Dispute Resolution: Theory and Evidence from Medical Malpractice Litigation

Yasutora Watanabe<sup>‡</sup>  
Northwestern University

August 2006

## Abstract

This paper studies the dispute resolution process with special emphasis on the dynamic patterns of litigation and settlement as well as the legal costs incurred and associated payments. I propose a dynamic bargaining model of dispute resolution with learning, estimate the model using micro data on medical malpractice disputes, and use the estimated model to assess the impact of proposed tort reforms. In my model the plaintiff and the defendant do not have a common prior on the probability of winning court judgment and learning takes place as they bargain. Estimation results show that the model fits all aspects of the data well. By conducting policy experiments using the estimated model, I find that capping jury awards or eliminating the contingency-fee arrangement significantly shortens the expected time to resolution and lowers the expected total legal costs. On the other hand, loser-pay-all allocation of legal fees delay resolution and increase costs.

**Keywords:** *Bargaining, Settlement, Tort Reform, Medical Malpractice*

---

\*I am grateful to Antonio Merlo for invaluable guidance and encouragement and to Ken Wolpin for very helpful discussions and suggestions. I also benefitted from conversations with Albert Choi, Hulya Eraslan, Richard Holden, Elena Krasnokutskaya, George Mailath, Sankar Mukhopadhyay, Ryo Okui, Elena Pastorino, Chris Sanchirico, Kathy Spier, Kathy Zeiler, and seminar participants at Brown, Cornell, Northwestern, UC Santa Cruz, Pennsylvania, Virginia, and Western Ontario. I thank Gilbert Gimm for helpful information on the data set.

<sup>‡</sup>Department of Management and Strategy, Kellogg School of Management, Northwestern University, 2001 Sheridan Road, Evanston, IL 60208. Email: y-watanabe@kellogg.northwestern.edu

# 1 Introduction

In recent years, medical malpractice litigation has been at the forefront of the public policy debate in the United States. The annual cost of payments to medical malpractice claims, which includes both legal fees and compensation payments, was about \$24 billion in 2002 and has doubled in the past 12 years (Tillinghast Towers-Perrin, 2003). A commonly held opinion is that the high cost of medical malpractice litigation has contributed to rising health care costs (see e.g. U.S. Congress Joint Economic Committee, 2003).<sup>1</sup>

Lengthy legal procedures and high legal costs are among the main drawbacks of the current litigation system.<sup>2</sup> In response to these problems, medical liability reforms, such as caps on jury awards or restrictions on lawyer fees, were adopted in many states during the 1990s and are currently under consideration at the federal level.<sup>3</sup>

This paper studies the process through which medical malpractice disputes are resolved. Special emphasis is given to the timing and the terms of dispute resolutions and the legal costs incurred by the negotiating parties. I propose a dynamic bargaining model of dispute resolution with learning, estimate the model using micro data on medical malpractice litigation, and use the estimated model to assess the impact of proposed tort reforms.

In the United States, doctors are liable for the damages caused by negligent care. Upon the alleged occurrence of such damage, the patient's claim against the doctor

---

<sup>1</sup>Medical malpractice litigation may also affect health care costs indirectly, through "defensive medicine" aimed at preventing litigation (Kessler and McClellan, 1996). Although this paper focuses on the direct cost of litigation, I discuss the issue of "defensive medicine" in Section 6 below.

<sup>2</sup>For example, Senator Joseph Lieberman argues in his speech during a Senate debate on March 21, 1996 (quoted by Babcock and Pogarsky, 1999)

"Everybody in America knows, at least most everybody know, that our Civil Justice System is not working well. We do not think anybody really can stand up and defend the status quo of the litigation system in America. The average person on the street - we stop them in Hartford, New Haven, Bridgeport - knows that lawsuits take too long; that people do not get justice in a timely fashion; that too much money goes to lawyers."

<sup>3</sup>In the U.S., medical malpractice liability is governed by state law. However, the Commerce Clause of the Constitution allows regulation by federal law. The House of Representatives passed the Help Efficient, Accessible, Low-Cost, Timely Healthcare (HEALTH) Act of 2003 in the 108th Congress, while the Senate voted against it. The bill has been reintroduced in 2004 and 2005 and is currently under consideration.

initiates a medical malpractice dispute. In this legal procedure, the plaintiff (i.e., the patient) and the defendant (i.e., the doctor) engage in negotiations over the terms of settlement in the shadow of court judgment. If the plaintiff files a lawsuit and the parties do not reach an agreement, they will face a judgment by the court, which determines whether the defendant is liable and, if so, the award to the plaintiff.

To study this process, I propose a dynamic model in which, following the occurrence of an alleged instance of medical malpractice, the plaintiff and the defendant bargain over a settlement. At any time during the negotiation, as long as no agreement has been reached, the plaintiff has the option of filing a lawsuit that would initiate the litigation phase. If no agreement is reached during the litigation phase, the case is resolved in court, where a jury verdict determines whether the defendant is liable and, if so the award to the plaintiff. In any period prior to the termination of a dispute, the defendant must pay his legal cost which I allow to differ depending on whether or not the plaintiff has filed a lawsuit. In particular, the defendant's legal costs are typically higher during the litigation phase, which entails additional legal procedures with respect to the pre-litigation phase. On the other hand, the plaintiff's legal costs are a fixed fraction of the compensation payment and are paid upon resolution of the dispute (the so-called "contingency fee rule").

In this study, I assume that the plaintiff and the defendant do not have a common prior belief over the probability of prevailing at trial. This asymmetry in initial beliefs may be due, for example, to differences in each party's perception of the relative ability of his or her lawyer, or to differences in opinion about the predisposition of potential juries. This assumption generates the possibility that parties may fail to reach an agreement over the terms of a settlement. As new information is revealed during bargaining, learning takes place, and the negotiating parties update their expectations of obtaining a favorable verdict. I allow the rate of arrival of information to differ in the pre-litigation and the litigation phases, because of, for example, the "discovery process" which follows the filing of a lawsuit. Learning has the effect of drawing the plaintiff and defendant's expectations of the trial results closer to each other, which in turn increases the probability of agreement.

I characterize the unique subgame-perfect equilibrium of this dynamic bargaining game. Equilibrium outcomes specify (i) the plaintiff's decision of whether to file a lawsuit and (ii) if so the time to filing, (iii) whether or not the case is settled out of court, (iv) the time to resolution, (v) the legal costs incurred, and (vi) the terms

of settlement. Delaying agreement is costly because of the per-period lawyer fees. However, the possibility of learning new information makes delay valuable for both players. This fundamental trade-off plays an important role in the equilibrium characterization and is a key determinant of the time to filing and the time to settlement. I find that the higher the rate at which new information arrives in bargaining, the shorter the time to settlement and the lower the legal costs. Furthermore, lower expected jury awards and less optimistic initial beliefs shorten settlement.

I estimate the model using a unique data set on individual medical malpractice disputes. The data set contains detailed information on the time, mode, cost, and terms of settlement as well as the time of filing lawsuit (if a lawsuit is filed) for all medical malpractice disputes in Florida over the period 1985-1999. The model fits all aspects of the data well. I find that learning plays a quantitatively important role in explaining the dynamic patterns of litigation and settlement observed in the data.

I use the estimated structural model to conduct policy experiments and evaluate the effects of proposed reforms of the medical liability system. I find that capping jury awards or eliminating the contingency fee rule significantly shortens the expected time to resolution and lowers the expected total legal costs. Because shorter legal procedures would reduce congestion in the legal system and savings of legal costs would lower the deadweight loss of litigation, I conclude that these reforms could have important welfare implications. On the other hand, replacing the current system with the “loser-pay-all” allocation of legal fees would not be a desirable policy, since it would delay resolution and increase costs.

There is a large theoretical literature on bargaining models of dispute resolution (see, e.g., the survey by Spier, 2005). A significant fraction of the literature considers models similar to the one I propose in this paper, in which the negotiating parties do not have a common prior belief over the probability of prevailing at trial (e.g., Landes, 1971; Posner, 1973; Priest and Klein, 1984; and Wittman 1988).<sup>4</sup> The main focus of these studies, however, is to analyze the parties’ decision of whether or not to settle their dispute out of court. For this reason, existing contributions consider only two-period bargaining models, in which failure to reach an agreement in the first period leads to a jury verdict in the second period. As indicated above, one of the main goals of my paper is to study the timing of filing and settlement decisions in

---

<sup>4</sup>Another strand of the literature considers instead bargaining models with asymmetric information (see, e.g., Bebchuk, 1984; Nalebuff, 1987; Reinganum and Wilde, 1986; Spier 1992).

legal disputes. I therefore consider a dynamic bargaining model.<sup>5</sup>

As illustrated by Yildiz (2003) in the context of a “divide-the-dollar” game, simple extensions of bargaining models without a common prior to an  $n$ -period environment may not be able to explain the occurrence of delay. Within the context of bargaining models of dispute resolution, this implies that either the parties would settle immediately or that the case would be resolved by court judgement. By introducing learning in a dynamic bargaining model without a common prior, I show that delayed settlement can occur in equilibrium.<sup>6</sup> Also, by making the plaintiff’s decision to file lawsuit endogenous, I show that delays in filing can emerge in equilibrium.

Corresponding to the theoretical literature summarized above, the main focus of the empirical literature on dispute resolution to date has been the estimation of the probability of defendants prevailing at trial and/or the probability of cases settling out of court.<sup>7</sup> The two papers that are most closely related to mine are Waldfogel (1995) and Sieg (2000). Waldfogel (1995) uses data on the mode of resolution of civil disputes to estimate a two-period bargaining model with without a common prior. Using the same data set I use in this paper, Sieg (2000) estimates a two-period bargaining model with asymmetric information to study the mode, cost, and terms of settlement in medical malpractice disputes. Neither paper, however, studies the dynamic patterns of filing and settlement in dispute resolution.<sup>8</sup>

Another strain of empirical research explores the effects of tort reforms. Yoon (2001) studies the effect of a reform implemented in Alabama that imposed a cap on

---

<sup>5</sup>Bebchuk (1996) considers an  $n$ -period bargaining model to explain why a plaintiff may file a lawsuit even though the expected value of litigation is negative. In his model, however, the players have identical expectations over the probability of prevailing at trial, and settlement always occurs in the initial period. Spier (1992) considers a dynamic bargaining model with asymmetric information, where in equilibrium the plaintiff makes a sequence of “screening” offers that only certain types of defendants accept, thus leading to the possibility of delay. Her analysis, however, abstracts from the plaintiff’s decisions of whether and when to file a lawsuit.

<sup>6</sup>Cooter and Rubinfeld (1994) introduce an interim stage of “discovery” in a two-period model to study the effect of the discovery process. They show that it is possible for a case to settle in the discovery stage. However, their paper abstracts from the decision of filing and is not interested in explaining the dynamic patterns of settlement and filing.

<sup>7</sup>See, e.g., Danzon and Lillard (1983), Farber and White (1991), and the survey by Kessler and Rubinfeld (2004).

<sup>8</sup>There is a small empirical literature that uses duration analysis to estimate hazard models of dispute resolution. Kessler (1996), for example, estimates a duration model to assess the effect of institutional features of the legal system on the time to resolution of civil disputes (see, also Fournier and Zuehlke, 1996 and Fenn and Rickman, 1999). These studies, however, are not interested in explaining the time to filing, the terms of settlement, or the legal costs incurred by the negotiating parties.

jury awards. He finds that such a reform significantly reduced average compensation payments. Using laboratory experiments, Babcock and Pogarsky (1999) find that caps on jury awards encourage settlement. Snyder and Hughes (1990) and Hughes and Snyder (1995) study the effect of a temporary implementation of the “loser-pay-all” rule for the allocation of legal fees in Florida and find that such rule increases settlement payments. The findings of my analysis are consistent with these results.

The remainder of the paper is organized as follows. In Section 2, I present the model and characterize the equilibrium. Section 3 describes the data and Section 4 presents the econometric specification. Section 5 contains the results of the empirical analysis. Finally, policy experiments are presented in Section 6.

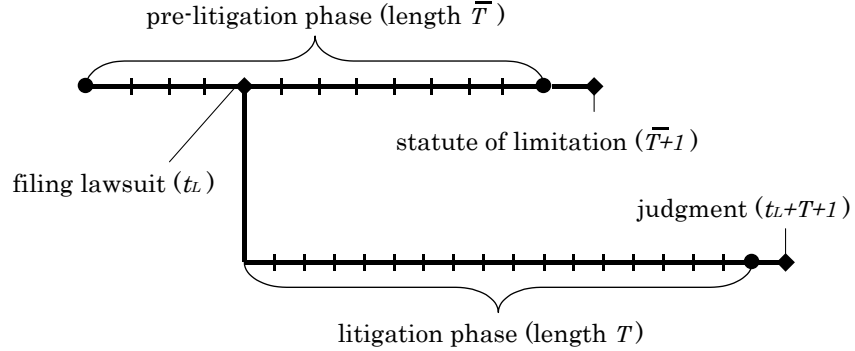
## 2 Model

I consider a perfect-information sequential bargaining model of legal dispute resolution with stochastic learning. The players of the bargaining game are a plaintiff ( $p$ ) and a defendant ( $d$ ). The plaintiff and the defendant bargain over the compensation payment  $x \in \mathcal{R}^+$  from the defendant to the plaintiff to resolve the dispute. Each player  $i \in \{d, p\}$  has linear von-Neumann-Morgenstern preferences over monetary transfer and legal costs. Both players know the amount of the potential jury award  $V \in \mathcal{R}^+$ , but the outcome of the judgement is uncertain, i.e. the players do not know who will win the case in the even of a trial.<sup>9</sup> The defendant pays  $V$  to the plaintiff if the plaintiff wins the judgment, while the defendant does not pay any amount otherwise. I denote the plaintiff’s probability of prevailing by  $\pi$ .

**Timing and Phases** The bargaining game has two multi-period phases depending on whether the plaintiff has filed a lawsuit or not: the pre-litigation phase (Phase  $O$ ) and the litigation phase (Phase  $L$ ). The game starts with Phase  $O$  at period  $t = 0$ . Players bargain every period until they reach an agreement. Phase  $O$  has a finite number of periods  $\bar{T} < \infty$ , due to the statute of limitation at period  $t = \bar{T} + 1 < \infty$ , after which the plaintiff’s claim to recover is barred by law. The plaintiff has an

---

<sup>9</sup>In the literature the uncertainty of the judgment is modeled either due to (i) the uncertainty of the winning probability (see e.g., Pries and Klein(1984)) or (ii) the uncertainty of the award amount (see e.g. Spier (1992)). In terms of modeling, the result mainly depends on the uncertainty in the expected award, not the decomposition of it into the winning probability and the award amount. I choose the former assumption for tractability of the model.



The plaintiff and the defendant start bargaining over a settlement in pre-litigation stage. At any time in pre-litigation stage, as long as no agreement has been reached, the plaintiff has the option of filing a lawsuit that endogenously determine  $t_L$  and would initiate the litigation stage. If neither a lawsuit is filed nor a settlement is reached by  $\bar{T}$  in pre-litigation phase, the case is no longer valid due to statute of limitation. If no agreement is reached during the litigation stage, the case is resolved by court judgment at  $t_L + T + 1$ .

Figure 1: Diagram of Model Structure

option of filing a lawsuit in Phase  $O$  as long as no agreement has been reached. The filing of a lawsuit moves the game to Phase  $L$ . Thus, in Phase  $O$ , a case may be filed (leading to Phase  $L$ ) or may conclude due to a settlement (without filing a lawsuit), or the statute of limitations

The plaintiff's endogenous decision to file a lawsuit initiates Phase  $L$ . Let  $t_L \in \{0, \dots, \bar{T}\}$  denote the date of the filing of lawsuit. Once the plaintiff files a lawsuit, the case is processed in court towards the judgment scheduled  $T + 1$  periods after the date of filing, that is date  $t = t_L + T + 1 < \infty$ . While the case is processed in court, the players can always agree to settle the case until  $t = t_L + T$ . Failure to reach a settlement agreement by  $t = t_L + T$  results in the resolution by the court judgment at  $t = t_L + T + 1$ .

**Stage Games** In Phase  $O$ , players play the following stage game in every period  $t \in \{0, \dots, \bar{T}\}$ . At the beginning of each period, information arrives with probability  $\lambda_{Ot}$  and does not arrive with probability  $1 - \lambda_{Ot}$ . The information is such that it affects the outcome of the judgment (e.g., the result of third-party medical examination) and is commonly observed by both players. Then, nature chooses the proposer, with probability  $\phi$  for the plaintiff and  $1 - \phi$  for the defendant. The chosen party proposes the amount of compensation payment  $x$ , which will be either accepted or rejected by the other party. If accepted, the game concludes with the proposed amount of money  $x$  being transferred from the defendant to the plaintiff, and the dispute is resolved. If the proposal is rejected, the plaintiff chooses whether or not to file a lawsuit. The case moves to Phase  $L$  if the plaintiff files a lawsuit, while it remains in Phase  $O$  and the same stage game is repeated if the plaintiff chooses not to file. If the case is neither filed nor settled during the  $\bar{T}$  periods, the statute of limitation renders the claim by the plaintiff to be ineffective.

After the plaintiff files a lawsuit, the parties play the following stage game in every period  $t \in \{t_L, \dots, t_L + T\}$  until the court judges on the case at  $t = t_L + T + 1$ . At the beginning of each period, information that affects the outcome of the judgment arrives with probability  $\lambda_{Lt}$  and does not arrive with probability  $1 - \lambda_{Lt}$ . Then, nature again chooses the proposer, with probability  $\phi$  for the plaintiff and  $1 - \phi$  for the defendant. The chosen party proposes the amount of compensation payment  $x$ , which will be either accepted or rejected by the other party. If accepted, the game terminates with the proposed amount of money being transferred from the defendant to the plaintiff, and the dispute is resolved. If rejected, the case remains in Phase  $L$  and the same stage game is repeated until  $t = t_L + T$ .

I allow the rates of information arrival to differ across phases. One of the reasons for differing rates stems from the “discovery process.” In this process, both parties can employ a variety of legal devices to acquire information on the case that follows the filing of a lawsuit.

In civil disputes, including medical malpractice disputes, plaintiffs’ lawyers use a contingency fee arrangement<sup>10</sup>, while defendants’ legal councils charge an hourly legal fee. The contingency fee arrangement entitles the plaintiff’s lawyers to a fraction (typically one-third to 40%) of the money received from the defendant only if a

---

<sup>10</sup>Sloan et al. (1993) reports that 99.4% of the cases adopted contingency fee arrangement in their Survey of Medical Malpractice Claimants conducted in Florida during 1989-1990.

positive payment is received. Because of this deferment, the plaintiff incurs no additional legal cost by delaying agreement. Hence, plaintiffs's objective is to maximize the expected payment from the defendant. While delaying settlement may not affect the plaintiff's legal costs, it leads to higher legal costs for the defendant. For the defendant, I assume per-period legal costs of  $C_O \in R^+$  and  $C_L \in R^+$  in Phases  $O$  and  $L$  respectively. I allow per-period costs to differ depending on whether or not the plaintiff has filed a lawsuit. In particular, the defendant's legal costs are typically higher in the litigation phase, which entails additional legal procedures with respect to the pre-litigation phase. I consider a common time-discount factor denoted by  $\beta \in [0, 1]$ .

**Information and Beliefs** The model is a game of perfect information. As described above, the players can observe all the actions of the other player. The information revealed is also commonly observed by both players. Hence, there is no asymmetric information. The players, however, do not have a common prior over the probability that the plaintiff will win the case ( $\pi$ ). This asymmetry in initial beliefs may be due for example to differences in each party's perception of the relative ability of his or her lawyer, to difference in legal standards expected to be applied to the case by the judges, to differences in opinion about the predisposition of potential juries.<sup>11</sup>

I assume that the players' beliefs of the probability of the plaintiff's prevailing  $\pi \in [0, 1]$  follow beta distributions, a flexible as well as tractable distribution with support  $[0, 1]$  that is widely used in statistical learning models on Bernoulli trial process. Player  $i$ 's initial belief, denoted by  $b_0^i$ , are represented by  $Beta(\theta_i, \rho - \theta_i)$ , where  $0 < \theta_d < \theta_p < \rho$ .<sup>12</sup> A common parameter  $\rho$  represents the firmness of belief as explained later. Thus, at the initial date, the players have expected probability of plaintiff's prevailing as

$$E(b_0^p) = \frac{\theta_p}{\rho} \text{ for the plaintiff, and}$$

$$E(b_0^d) = \frac{\theta_d}{\rho} \text{ for the defendant.}$$

---

<sup>11</sup>In an experimental study on dispute resolution of a tort case, Babcock, Loewenstein, Issacharoff and Camerer (1995) demonstrates that player do not have a common prior even though they have access to the same information.

<sup>12</sup>See Yildiz (2004) for a similar learning mechanism. Arrival of information is deterministic in his model, while it is stochastic in my model.

At the beginning of each period  $t$  in Phase  $J \in \{O, L\}$ , information related to winning probability (such as the result of a third party medical examination or testimony by an expert witness) arrives with probability  $\lambda_J$ . I denote an arrival of information at  $t$  by  $n^t \in \{0, 1\}$ , where  $n^t = 1$  means arrival of information while  $n^t = 0$  represents no arrival. The cumulated amount of information at period  $t$  is denoted by  $n_t \in \{0, \dots, t\}$ , and therefore

$$n_t = n_{t-1} + n^t.$$

Information is either in favor of or against the plaintiff. I denote the content of the arrived information  $n^t$  by  $m^t \in \{0, 1\}$ . The content is for the plaintiff if  $m^t = 1$ , while  $m^t = 0$  means the arrived information is against the plaintiff, and

$$m^t = \begin{cases} 0 & \text{with probability } 1 - \pi \\ 1 & \text{with probability } \pi, \end{cases}$$

where  $\pi$  is not known to the players. The cumulated information in favor of the plaintiff is denoted by  $m_t \in \{0, \dots, n_t\}$ , leading to

$$m_t = m_{t-1} + n^t m^t$$

where  $m^t$  is multiplied by  $n^t$  since the content of information matters only if information arrives.

Players update their beliefs according to Bayesian updating as follows: The beliefs at period  $t$ , denoted by  $b_t^p$  and  $b_t^d$ , follow  $Beta(\theta_p + m_t, \rho - \theta_p + n_t - m_t)$  and  $Beta(\theta_d + m_t, \rho - \theta_d + n_t - m_t)$  respectively. Hence, at period  $t$ , the expectations on the probability  $\pi$  of plaintiff's prevailing on the judgement are

$$E(b_t^p) = \frac{\theta_p + m_t}{\rho + n_t}$$

and

$$E(b_t^d) = \frac{\theta_d + m_t}{\rho + n_t}.$$

The players use these expectations as their estimates of  $\pi$ . The firmer the beliefs (i.e., the higher the firmness of belief parameter  $\rho$ ), the less is the impact of the information obtained in the legal process. By modelling beliefs this way, I can capture the

relative impact of new learning on prior beliefs. The information environment I have described above is common knowledge to both players. For notational convenience, I let  $k_t = (n_t, m_t) \in \{0, t\} \times \{0, t\}$  denote the information state.

## 2.1 Equilibrium Characterization

The model is a dynamic game with perfect information. Thus, I employ subgame-perfect equilibrium as the equilibrium concept. Because the model has a finite number of periods, backward induction provides us with a characterization of the unique subgame-perfect equilibrium. I start the analysis from the last stage in Phase  $L$ , and move to Phase  $O$ .

### 2.1.1 Equilibrium without Learning

In order to clarify the role of learning in the model, I first characterize the equilibrium for the case in which there is no learning.

**Proposition 1** *If no learning takes place ( $b_t^i = b^i$  for any  $t$  for  $i = p, d$ ), the players either settle immediately or the case is resolved by court judgement. Players settle immediately iff*

$$(b^p - b^d)\beta^T V \leq \frac{(1 + \beta^{T+1})C_L}{(1 - \beta)}, \quad (1)$$

*and the case is resolved by the court judgment otherwise. The case is filed immediately if it is not settled immediately.*

**Proof.** See Appendix A. ■

Proposition 1 states that delays in settlement and filing cannot occur if there is no learning. The parties settle immediately if their beliefs are sufficiently close, but if their beliefs differ significantly, they do not settle, and the case is resolved by court judgment. The threshold condition can be interpreted intuitively. The left hand side of inequality (1) is the discounted difference in expected award, and the right hand side represents the discounted sum of legal costs to be saved. If the total legal cost to be saved is large enough compared to the difference in expected award, the players settle immediately. The discounting in (1) is up to  $t = T$  to reflect the fact that the plaintiff will choose to file immediately if he does not settle immediately, because the award is discounted more if he files later.

This result clarifies the limitation of the existing models of dispute resolution without a common prior (e.g., Landes, 1971; Posner, 1973; Priest and Klein, 1984; and Wittman 1988). In such models, learning in the legal procedure is not considered, and the divergence of the beliefs is the sole reason for not agreeing immediately if legal cost is significantly large. If players do not agree immediately, the players will choose to file and face judgement rather than to settle after certain periods. However, this proposition shows that the divergence of expectation alone is not adequate to explain dynamic patterns of delayed settlements and filing which are typically observed in the data.<sup>13</sup> In the rest of the section, I consider the case with learning in which the delayed settlement and litigation occurs in equilibrium.

### 2.1.2 Phase $L$ (Litigation Phase)

I start my analysis from Phase  $L$  following backward induction. Recall that a Phase  $L$  subgame is reached only if the case is litigated at some period during Phase  $O$ . Let  $t_L \in \{0, \dots, \bar{T}\}$  denote the date of filing the lawsuit. If the players cannot settle by date  $t_L + T$ , the judgement by the court at  $t = t_L + T + 1$  determines the outcome of the last stage. Let  $V_{t-t_L}^i(k_t)$  denote the continuation value for player  $i \in \{p, d\}$  at the beginning of date  $t$  in Phase  $L$  with information state  $k_t$ . Note that the subscript is  $t - t_L$ , which is the number of periods in Phase  $L$ . Thus, the continuation value of the judgment is

$$V_{T+1}^p(k_{t_L+T+1}) = -V_{T+1}^d(k_{t_L+T+1}) = \begin{cases} V & \text{if the plaintiff prevails} \\ 0 & \text{otherwise.} \end{cases} \quad (2)$$

I obtain  $V_{t-t_L}^i(k_t)$  by applying backward induction and having (2) as final values. To do so, I consider two separate cases depending on whether the players will settle or continue.

First, consider the case of  $E_t^p[V_{t+1-t_L}^p(k_{t+1})] + E_t^d[V_{t+1-t_L}^d(k_{t+1})] > C_L$ , in which players do not settle. Suppose that the players settle in period  $t$  with monetary transfer  $x_t$ . The plaintiff agrees only if  $x_t \geq \beta E_t^p[V_{t+1-t_L}^p(k_{t+1})]$ , while the defendant agrees only if  $-x_t \geq \beta (E_t^d[V_{t+1-t_L}^d(k_{t+1})] - C_L)$ . This requires  $0 = x_t - x_t \geq E_t^p[V_{t+1-t_L}^p(k_{t+1})] + E_t^d[V_{t+1-t_L}^d(k_{t+1})] - C_L$ . This contradicts with

---

<sup>13</sup>Kessler (1996), Fournier and Zuehlke (1996), and Fenn and Rickman (1999) report data in which duration to resolution of legal disputes vary significantly across cases.

$E_t^p[V_{t+1-t_L}^p(k_{t+1})] + E_t^d[V_{t+1-t_L}^d(k_{t+1})] > C_L$ , which proves that the players will not settle at  $t$ . Hence, the continuation value of each players at the beginning of date  $t$  will be

$$\begin{aligned} V_{t-t_L}^p(k_t) &= \beta E_t^p [V_{t+1-t_L}^p(k_{t+1})], \\ V_{t-t_L}^d(k_t) &= \beta (E_t^d [V_{t+1-t_L}^d(k_{t+1})] - C_L). \end{aligned}$$

Now, consider the case of  $E_t^p[V_{t+1-t_L}^p(k_{t+1})] + E_t^d[V_{t+1-t_L}^d(k_{t+1})] \leq C_L$ , in which players settle. Both players accept an offer if it gives them at least their continuation value. If the plaintiff is recognized as a proposer, she chooses to offer  $x_t = \beta (E_t^d [V_{t+1-t_L}^d(k_{t+1})] - C_L)$ , the defendant's continuation value. This is because the plaintiff's settlement offer is larger than her continuation value, i.e.,  $-x_t = -\beta (E_t^d [V_{t+1-t_L}^d(k_{t+1})] - C_L) \geq \beta E_t^p[V_{t+1-t_L}^p(k_{t+1})]$ . I can apply the same argument for the cases in which the defendant is the proposer. Thus, in equilibrium, the proposer offers the continuation value of the opponent, and the opponent accepts. The continuation value of each player at the beginning of date  $t$  is written as

$$\begin{aligned} V_{t-t_L}^p(k_t) &= \phi\beta(-E_t^d [V_{t+1-t_L}^d(k_{t+1})] + C_L) + (1 - \phi)\beta (E_t^p [V_{t+1-t_L}^p(k_{t+1})]) \\ V_{t-t_L}^d(k_t) &= \phi\beta(E_t^d [V_{t+1-t_L}^d(k_{t+1})] - C_L) + (1 - \phi)\beta(-E_t^p [V_{t+1-t_L}^p(k_{t+1})]). \end{aligned}$$

Combining both cases, the argument presented above proves the following proposition.

**Proposition 2** *1. In the unique subgame perfect equilibrium, the payoff of the players at  $t \in \{t_L + 1, \dots, t_L + T\}$  in Phase L are expressed as*

$$\begin{aligned} V_{t-t_L}^p(k_t) &= \phi\beta \max \{ -E_t^d [V_{t+1-t_L}^d(k_{t+1})] + C_L, E_t^p [V_{t+1-t_L}^p(k_{t+1})] \} \\ &\quad + (1 - \phi)\beta E_t^p [V_{t+1-t_L}^p(k_{t+1})], \\ V_{t-t_L}^d(k_t) &= \phi\beta \{ E_t^d [V_{t+1-t_L}^d(k_{t+1})] - C_L \} \\ &\quad + (1 - \phi)\beta \max \{ -E_t^p [V_{t+1-t_L}^p(k_{t+1})], E_t^d [V_{t+1-t_L}^d(k_{t+1})] - C_L \}. \end{aligned}$$

*2. Given  $k_t$  and  $t_L$ , players settle at  $t \in \{t_L + 1, \dots, t_L + T\}$  in Phase L iff*

$$E_t^p[V_{t+1-t_L}^p(k_{t+1})] + E_t^d[V_{t+1-t_L}^d(k_{t+1})] \leq C_L.$$

3. Given that players settle at  $t \in \{t_L + 1, \dots, t_L + T\}$  in Phase  $L$ , the payment is

$$x_t = \begin{cases} \beta (-E_t^d [V_{t+1-t_L}^d(k_{t+1})] + C_L^d) & \text{if the plaintiff is a proposer} \\ \beta E_t^p [V_{t+1-t_L}^p(k_{t+1})] & \text{if the defendant is a proposer,} \end{cases}$$

and the total legal cost incurred is  $t_L C_O + t_S C_L$

This proposition characterizes the subgame perfect equilibrium in Phase  $L$ . Note that the identity of the proposer does not affect the settlement decision though it affects the compensation payment. This arises because the players choose to settle if the joint surplus of settling today is larger than the joint surplus of continuing the case. The compensation payment depends on the identity of the proposer because the recognized proposer obtains all of the surplus. Though the plaintiff incurs no per-period legal cost, delaying agreement is still costly for him because he misses the benefits of the saving of the defendant's legal costs that indirectly increases compensation payment. Therefore, delaying agreement is costly for both players, and quick settlement is preferable. However, the possibility of learning new information makes delay valuable, since this information enhances the probability of a settlement, which in turn generates positive surplus for both players. This fundamental trade-off plays an important role in the equilibrium characterization and is a key determinant of the timing of settlement.

### 2.1.3 Phase $O$ (Pre-Litigation Phase)

Let  $W_t^i(k_t)$  denote the continuation value for player  $i \in \{p, d\}$  at the beginning of date  $t$  in Phase  $O$  with information state  $k_t$ . Again, I start from the last stage of Phase  $O$  subgame. The maximum number of periods in Phase  $O$  is  $\bar{T}$ , after which the claim by the plaintiff loses its value due to the statute of limitation. Hence, each player has continuation payoff of 0 at date  $\bar{T} + 1$ , i.e.,

$$W_{\bar{T}+1}^p(k_{\bar{T}+1}) = W_{\bar{T}+1}^d(k_{\bar{T}+1}) = 0. \quad (3)$$

I compute  $W_t^i(k_t)$  by applying backward induction and having (3) as final values. In Phase  $O$ , the plaintiff has an option of litigating a case at any date  $t \in \{0, \dots, \bar{T}\}$ . Solving the value function in Proposition 2 up to the first period in Phase  $L$ , I can obtain the continuation value of the Phase  $L$  subgame,  $V_1^i(k_t)$ . Note that this

continuation value does not depend on the date of litigation  $t_L$  itself but does depend on the information state  $k_t$  at period  $t$ .

The plaintiff will choose to litigate at the end of date  $t$  if and only if

$$E_t [V_1^p(k_{t+1})] \geq E_t [W_{t+1}^p(k_{t+1})].$$

Hence, the continuation value for the plaintiff at the end of date  $t$  is written as

$$Y_t^p(k_t) = \beta \max \{ E_t [V_1^p(k_{t+1})], E_t [W_{t+1}^p(k_{t+1})] \},$$

while the continuation value for the defendant depends on the litigation decision by the plaintiff and is written as

$$Y_t^d(k_t) = \begin{cases} \beta (E_t [V_1^d(k_{t+1})] - C_L) & \text{if } E_t [V_1^p(k_{t+1})] \geq E_t [W_{t+1}^p(k_{t+1})] \\ \beta (E_t [W_{t+1}^d(k_{t+1})] - C_O) & \text{if } E_t [V_1^p(k_{t+1})] < E_t [W_{t+1}^p(k_{t+1})]. \end{cases}$$

Now, I repeat an argument similar to that of the Phase  $L$  regarding settlement decision. I consider two separate cases depending on whether the players will settle or continue the case.

First, consider the case of  $Y_t^p(k_t) > -Y_t^d(k_t)$ , in which players do not settle. Suppose that the players settle in period  $t$  with monetary transfer  $x$ . The plaintiff agrees only if  $x \geq Y_t^p(k_t)$ , while the defendant agrees only if  $-x \geq -Y_t^d(k_t)$ . This requires  $0 = x - x \geq Y_t^p(k_t) - Y_t^d(k_t)$ . This contradicts with  $Y_t^p(k_t) > -Y_t^d(k_t)$ , which proves that the players will not settle at  $t$ . Hence, the continuation value of each players at the beginning of date  $t$  will be

$$W_t^i(k_t) = Y_t^i(k_t).$$

Now, consider the case of  $Y_t^p(k_t) \leq -Y_t^d(k_t)$ , in which players settle. Each player accepts an offer if and only if it gives him at least his continuation value. If player  $i$  is recognized as the proposer, she offers  $Y_t^j(k_t)$  to player  $j$ , which is  $j$ 's continuation value. Thus, in equilibrium, a proposer  $i$  offers to give  $Y_t^j(k_t)$  to the opponent  $j$ , and  $j$  accepts this offer. I can write the continuation value of each player at the

beginning of date  $t$  as

$$\begin{aligned} W_t^p(k_t) &= \phi [-Y_t^d(k_t)] + (1 - \phi)Y_t^p(k_t), \\ W_t^d(k_t) &= \phi Y_t^d(k_t) + (1 - \phi)[-Y_t^p(k_t)]. \end{aligned}$$

This proves the following proposition.

**Proposition 3** *1. In any subgame perfect equilibrium, the payoffs of the players at  $t \in \{0, \dots, \bar{T}\}$  in Phase O are expressed as*

$$\begin{aligned} W_t^p(k_t) &= \phi \max \{-Y_t^d(k_t), Y_t^p(k_t)\} + (1 - \phi)Y_t^p(k_t), \\ W_t^d(k_t) &= \phi Y_t^d(k_t) + (1 - \phi) \max \{-Y_t^p(k_t), Y_t^d(k_t)\}. \end{aligned}$$

*2. Given  $k_t$ , players settle at  $t \in \{0, \dots, \bar{T}\}$  in Phase O iff*

$$Y_t^p(k_t) + Y_t^d(k_t) \leq 0.$$

*3. Given  $k_t$ , the plaintiff litigates at  $t \in \{0, \dots, \bar{T}\}$  in Phase O iff*

$$E_t [V_1^p(k_{t+1})] \geq E_t [W_{t+1}^p(k_{t+1})].$$

*4. Given that players settle at  $t \in \{0, \dots, \bar{T}\}$  in Phase O, the payment is*

$$x_t = \begin{cases} -Y_t^d(k_t) & \text{if the plaintiff is a proposer} \\ Y_t^p(k_t) & \text{if the defendant is a proposer,} \end{cases}$$

*and the total legal cost incurred is  $t_S C_O$ .*

This proposition characterizes the subgame perfect equilibrium in Phase O. The mechanics of the settlement decision are exactly the same as for the characterization for Phase L. The only difference is that the cost of delay and the possibility of learning in the next period depend on the plaintiff's decision to file or not at the end of each period.

The decision to file a lawsuit by the plaintiff is also derived from a trade-off between the cost of delay and the possibility of learning. The cost of delaying filing has two components. One is the per-period legal cost of the pre-litigation phase,

because the total length of the underlying game becomes one period longer if filing is delayed by one period. Even though the plaintiff incurs no legal cost per period, this delay still impacts him because minimizing the defendant's legal cost may result in a higher compensation payment to the plaintiff. The second component is the cost of delay due to discounting. The plaintiff prefers to obtain the continuation value of the Phase  $L$  subgame earlier, since a one-period delay in filing costs him  $(1 - \beta)V_1^p(\cdot)$  when no information arrives. The benefit of delaying filing by one period is that the parties have one more period to obtain new information and hence reach an agreement. Thus, the plaintiff prefers to stay in Phase  $O$  longer if  $C_O$  is small and  $\beta$  is large, while low  $\lambda_{Ot}$  provides an incentive for the plaintiff to file early.

### 3 Data

In Florida, a statute on professional liability claims requires medical malpractice insurers to file a report on *all* of their closed claims once the claim is resolved regardless of their outcomes. The reports are collected by the Florida Department of Financial Services, the insurance regulator of the Florida state government. The report contains detailed information on the dispute resolution process, as well as individual case characteristics. The information on the dispute resolution process includes important dates (calendar date of occurrence, initial claim, filing of lawsuit, resolution either by settlement or by court judgement), settlement payments (or award by the court in case of resolution by court judgment), and total legal costs incurred by the defendants. The information on case characteristics includes patient characteristics (e.g. age and sex), defendant characteristics (e.g. defendant type, specialty, and insurance policy), and the characteristics of injury (e.g. severity and place of occurrence). Hence, this data set contains detailed information on all the variables of interest, i.e., if and when a lawsuit is filed, whether or not the case is settled out of court, the time to resolution, the legal costs incurred and the terms of settlement.

My sample of observations consists of 3,845 claims against physicians<sup>14</sup> which were resolved between October 1985 and July 1999.<sup>15</sup> Following Sieg (2000), I restrict attention to cases with the defendant's legal cost exceeding \$1,000 and which were

---

<sup>14</sup>Claims against hospitals, HMOs, dentists, ambulance surgical centers, and crisis stabilization units are excluded from my sample to control for the heterogeneity of the plaintiff.

<sup>15</sup>During this period, there were no major changes in state law pertaining to resolution of medical malpractice disputes.

	Number of Observations	Resolution Probability	Mean Compensation	Mean Defense Legal Cost
Settled before lawsuit filed	472	0.123	314,266 (303,917)	9,047 (15,014)
Settled after lawsuit but before judgment	2,887	0.751	303,402 (379,909)	53,989 (88,887)
Resolved by Judgment with Positive Award	127	0.033	541,832 (620,722)	127,966 (113,147)
Resolved by Judgment with No Award	359	0.093	0 (0)	83,182 (87,268)
Total	3,845	1.000	284,283 (377,401)	53,641 (87,159)

Compensation payments and legal costs are measured in 2000 dollars. Numbers in parentheses provides standard deviations.

Table 1: Descriptive Statistics I - Resolution Probability, Payments and Legal Costs

not dropped during the litigation process.<sup>16</sup> Because the timing and disposition of cases differ greatly depending on the severity of the injury, I restrict attention to the cases in which injuries resulted in permanent major damage or death of the patient.

Tables 1 and 2 show the descriptive statistics of all the variables I use for estimation. In my data, 87.4% of the cases were settled by parties rather than facing judgment by the court. These cases were settled either after filing a lawsuit (75.3%) or without filing a lawsuit (12.3%). Only 12.6% of all the cases were resolved by a court judgment. Where this happened, the defendants were three times more likely to win the judgment (i.e., award was zero). Mean compensation payments were similar for the cases that were settled after filing a lawsuit and those that were settled without filing a lawsuit (around \$300,000).

Legal costs for defendants substantially differed across modes of resolution. Defense lawyers usually charge based on the amount of time they spent. It is not surprising to find that the mean of the defense legal costs correlates strongly with the mean time to resolution as displayed in Table 2. Mean of defence legal costs for cases settled without a lawsuit is about one-fifth of the cases settled after a lawsuit. This

<sup>16</sup>This procedure eliminates small and frivolous cases.

	Time to Filing	Time to Resolution after Filing	Total Time to Resolution
Settled without Filing	—	—	3.23 (2.41)
Settled after Filing	2.48 (2.26)	7.45 (4.55)	9.93 (5.16)
Resolved by Judgment with Positive Award	2.69 (2.67)	11.41 (6.61)	14.10 (7.17)
Resolved by Judgment with No Award	2.50 (3.21)	9.69 (5.17)	12.19 (6.24)
Total	2.58 (2.41)	6.88 (5.19)	9.46 (5.69)

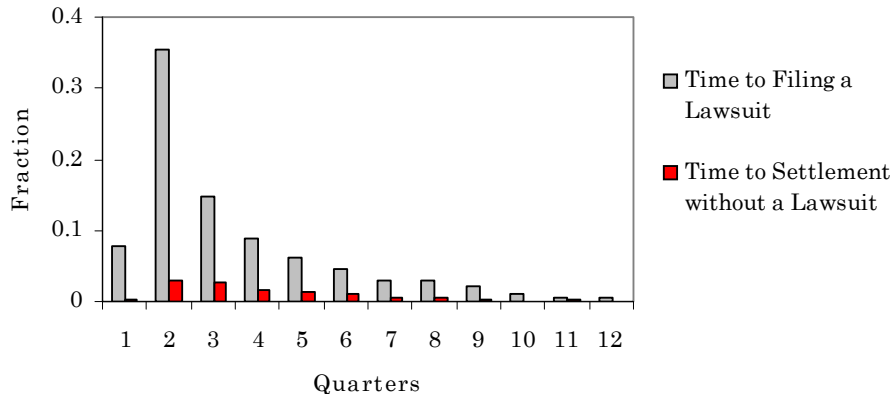
Numbers are in quarters of a year. The numbers in parentheses provide standard deviations.

Table 2: Descriptive Statistics II - Timings

difference correlates with the shorter mean time to resolution as in Table 2. The cases settled after filing a lawsuit have a significantly higher mean cost (\$53,989) compared to the settled cases without a lawsuit (\$9,047). Among the cases resolved by court judgement, mean defense costs are more than 50% higher for the cases won by the plaintiffs than the cases won by the defendants, which again corresponds to the longer time to resolution.

Mean time to filing a lawsuit, which corresponds to the periods spent in the pre-litigation phase, is similar for the settled cases and cases resolved by court judgment. The time to resolution differ between the cases settled after filing and the cases resolved by the judgment. This difference results from the difference in time to resolution after filing lawsuit. The cases settled without a lawsuit, which correspond to settlement in pre-litigation phase, spend longer periods in the pre-litigation phase than the filed cases on average.

Figures 2 offers more a detailed description of statistics on the time to filing and the time to settlement in pre-litigation phase. Figure 2 provides the histogram of filing and settlement without lawsuit. Note that the sum of the fractions for filing and settlement without lawsuit add up to one because each case is either filed or settled without lawsuit. In Florida, the statute of limitation regarding a medical malpractice



Fraction of time to filing a lawsuit and time to settle without a lawsuit add up to one. This is because cases are either 1) resolved after a lawsuit is filed or 2) settled without a lawsuit.

Figure 2: Histogram of Time to Filing and Settlement in Pre-Litigation Phase

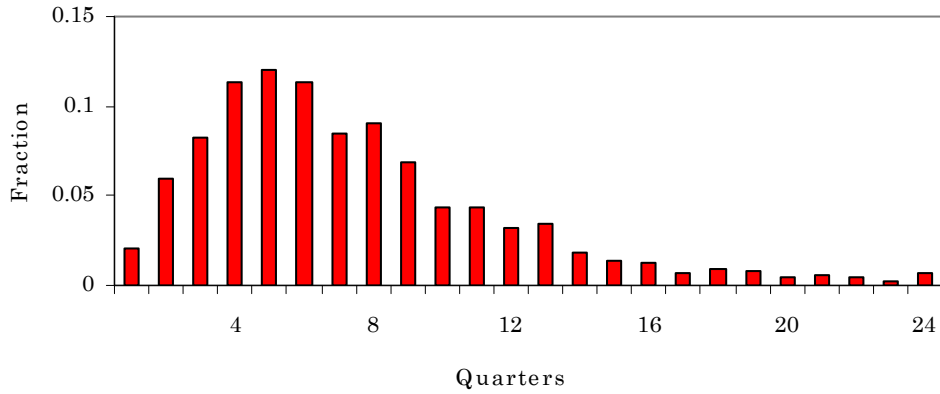
cases is two years. Hence, more than 95% of the cases are filed or settled without filing a lawsuit before the ninth quarter.<sup>17</sup>

The fraction of cases filing lawsuits in pre-litigation phase and a fraction of cases settling without lawsuits have a common pattern. In both the hazard rate increases significantly at the second quarter and gradually increases over time. Corresponding to a high hazard rate after the second quarter, the histogram reflects that more than 35% of cases are filed in the second quarter before the fraction declines rapidly over time. Regarding the time to settlement without a lawsuit, the decline after the second quarter is much slower as a result of the lower hazard rate.

Figures 3 presents more details on the time to settlement after filing a lawsuit. The hazard rate increases over time similar to the time to filing and the time to settlement without a lawsuit. Ninety percent of cases are settled in 13 quarters, and less than 5% of cases are settled after 16 quarters.

Compensation payments have very high variance. Figure 4 presents the histogram of (log) compensation payments from the defendant to the plaintiff. Of the total cases, about 9% of them concluded with judgment in favor of the defendant and, thus, have zero payments. The amount of positive payments have very high variance, and the shape of the distribution is close to log-normal distribution. More than half of the cases are between \$98,700 and \$729,400. The distribution for the cases judged with

<sup>17</sup>The remaining cases may be due, for example, to intervening medical complications that entail an automatic extension of the statute of limitations.



Time is counted from the date of filing a lawsuit in quarters. Cases exceeding 6 years are counted in the bin of 24 quarter.

Figure 3: Histogram of Time to Settlement after Filing

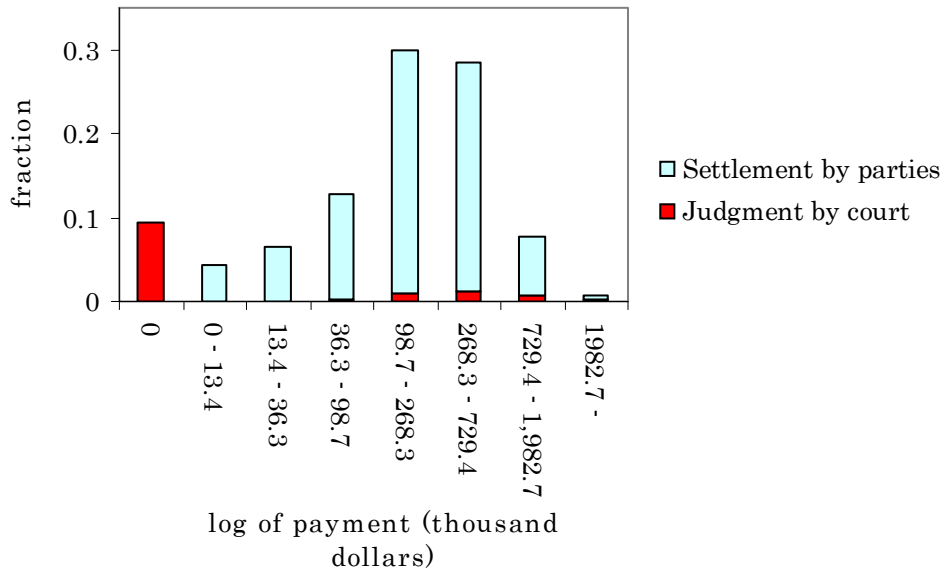


Figure 4: Histogram of Payments

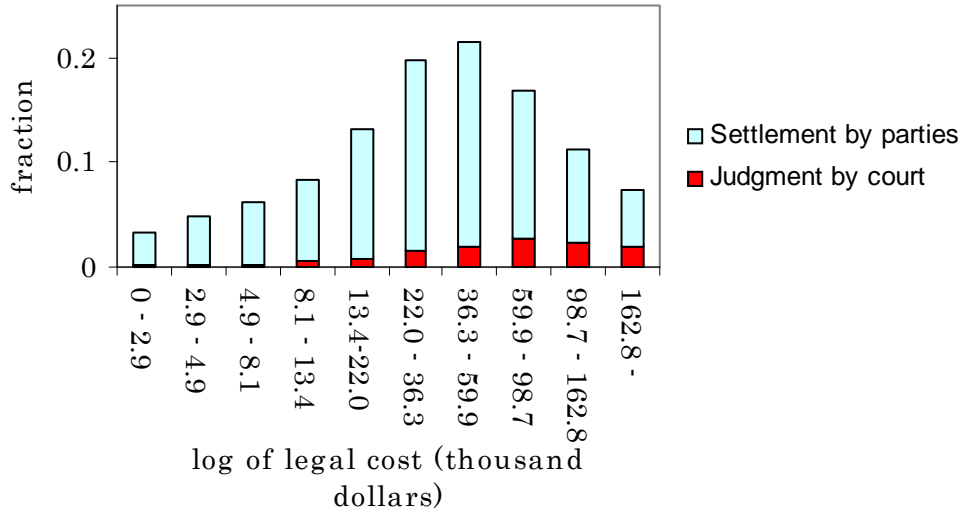


Figure 5: Histogram of Defense Legal Costs

positive award is also similar to the log-normal distribution, while the mean and variance are much larger.

Similar to that of compensation payments, the distribution of legal costs is close to a log-normal distribution. As clearly seen from Figure 5, the distribution of cost of the cases resolved by court judgment have much higher costs compared with the distribution of the other cases. The settled cases tend to have much lower costs compared to the cases resolved by court judgments.

## 4 Econometric Specification

Because the model does not admit closed-form solution and state space is large, I will solve the model numerically for each parameter values. The numerical solution of the model provides conditional probabilities of equilibrium outcomes. Due to unobserved heterogeneity in several dimensions, I will simulate the model using Monte Carlo integration to obtain the conditional probabilities, which is used to calculate likelihood. I estimate the model by maximum likelihood.

**Calculating Conditional Probabilities of Equilibrium Outcomes** In Chapter 2, I characterized the equilibrium outcome on the time, mode, cost, and terms of settlement, as well as the time of filing a lawsuit (if a lawsuit is filed). However, the

outcomes are contingent on the realization of the state of information  $k_t = (n_t, m_t) \in \{0, \dots, t\} \times \{0, \dots, t\}$  which is not observable to the econometrician. Thus, from the perspective of the econometrician, the litigation timing  $t_L$ , the settlement timing  $t_S$ , the compensation payment  $x$ , and the total legal cost  $C$  are all random variables because they depend on the (unobservable) realization of  $k_t$ . Hence, I first compute the conditional probability of observing the realization of random variables  $t_L, t_S, x, C$  in order to compute the likelihood contribution of each observation.

Let  $d_t^{SO}(n_t, m_t)$ ,  $d_t^{SL}(n_t, m_t, t_L)$ , and  $d_t^{FI}(n_t, m_t)$  denote the indicator function respectively for settlement in Phase  $O$ , settlement in Phase  $L$ , and filing of a lawsuit at period  $t$ . Using the results of Propositions 2 and 3, these indicator functions are written as

$$\begin{aligned} d_t^{SO}(n_t, m_t) &= I \{ Y_t^p(n_t, m_t) + Y_t^d(n_t, m_t) < 0 \}, \\ d_t^{SL}(n_t, m_t, t_L) &= I \{ E_t V_{t-t_L}^p(n_{t+1}, m_{t+1}) + E_t V_{t-t_L}^d(n_{t+1}, m_{t+1}) - C_L < 0 \}, \\ d_t^{FI}(n_t, m_t) &= I \{ E_t V_1^p(n_{t+1}, m_{t+1}) > E_t W_{t+1}^p(n_{t+1}, m_{t+1}) \}, \end{aligned}$$

where  $d_t^{SO}(n_t, m_t) = 1$ ,  $d_t^{SL}(n_t, m_t, t_L) = 1$ ,  $d_t^{FI}(n_t, m_t) = 1$  indicate settlement in Phase  $O$  and in Phase  $L$ , and litigation at period  $t$  given  $(n_t, m_t)$ ,  $(n_t, m_t, t_L)$ , and  $(n_t, m_t)$  while 0 otherwise. We assume the rates of information arrival as  $\lambda_{Ot} = \lambda_{O0} + t\lambda_{O1}$  and  $\lambda_{Lt} = \lambda_{L0} + t\lambda_{L1}$ . Let  $q_t^O(n_t, m_t)$  denote the probability of being in state  $k_t = (n_t, m_t) \in \{0, \dots, t\} \times \{0, \dots, t\}$  in Phase  $O$ , and let  $q_t^L(n_t, m_t, t_L)$  denote the probability of being in state  $k_t$  in Phase  $L$  given the litigation date of  $t_L < t$ . I can compute  $q_t^O$  recursively as follows:

$$\begin{aligned} q_0^O(0, 0) &= 1, \\ q_t^O(n, m) &= \lambda_{Ot}\pi q_{t-1}^O(n-1, m-1) [1 - d_t^{SO}(n-1, m-1)] [1 - d_t^{FI}(n-1, m-1)] \\ &\quad + \lambda_{Ot}(1-\pi) q_{t-1}^O(n-1, m) [1 - d_t^{SO}(n-1, m)] [1 - d_t^{FI}(n-1, m)] \\ &\quad + (1 - \lambda_{Ot}) q_{t-1}^O(n, m) [1 - d_t^{SO}(n, m)] [1 - d_t^{FI}(n, m)]. \end{aligned}$$

The initial condition for  $q_t^L$  is  $q_{t_L}^L$ , which can be written as

$$q_{t_L}^L(n, m, t_L) = \sum_{n_{t_L}=0}^{t_L} \sum_{m_{t_L}=0}^{t_L} q_{t_L}^O(n_{t_L}, m_{t_L}) d_{t_L}^{FI}(n_{t_L}, m_{t_L}).$$

I can compute  $q_t^L$  recursively for  $t > t_L$  as follows:

$$\begin{aligned} q_t^L(n, m, t_L) &= \lambda_{Lt} \pi q_{t-1}^L(n-1, m-1, t_L) [1 - d_t^{SL}(n-1, m-1, t_L)] \\ &\quad + \lambda_{Lt} (1 - \pi) q_{t-1}^L(n-1, m, t_L) [1 - d_t^{SL}(n-1, m, t_L)] \\ &\quad + (1 - \lambda_{Lt}) q_{t-1}^L(n, m, t_L) [1 - d_t^{SL}(n, m, t_L)]. \end{aligned}$$

Let  $l = \{FILE, NOFILE\}$  denote if a case is litigated ( $l = FILE$ ) or not ( $l = NOFILE$ ), and  $s \in \{SETTLE, JUDGE\}$  denote if the case is settled ( $s = SETTLE$ ) or reaches judgment by the court ( $s = JUDGE$ ). A case is resolved either by settlement with lawsuit ( $(l, s) = (FILE, SETTLE)$ ), by settlement without lawsuit ( $(l, s) = (NOFILE, SETTLE)$ ), or by judgement of the court ( $(l, s) = (FILE, JUDGE)$ ) on equilibrium path. With this notation, the probability that the econometrician observes litigation at date  $t_L$  can be written as

$$\Pr(FILE) \times \Pr(t_L | FILE) = \sum_{n_{t_L}=0}^{t_L} \sum_{m_{t_L}=0}^{t_L} q_{t_L}^O(n_{t_L}, m_{t_L}) d_t^{FI}(n_{t_L}, m_{t_L}),$$

where  $q_{t_L}^O(n_{t_L}, m_{t_L})$  is the probability of reaching state  $k_{t_L} = (n_{t_L}, m_{t_L})$  in period  $t_L$  and  $d_t^{FI}(n_{t_L}, m_{t_L})$  is the indicator of filing a lawsuit at  $t_L$  given the state  $k_{t_L}$ . Settlement in Phase  $L$  occurs only after litigation in Phase  $O$ . Thus, the probability of settlement in Phase  $L$  conditional on litigation at Phase  $L$  is written as

$$\Pr(t_S, SETTLE | t_L, FILE) = \sum_{n_{t_S}=0}^{t_S} \sum_{m_{t_S}=0}^{t_S} q_{t_S}^L(n_{t_S}, m_{t_S}, t_L) d_t^{SL}(n_{t_S}, m_{t_S}, t_L),$$

where  $q_{t_S}^L(n_{t_S}, m_{t_S}, t_L)$  is the probability of reaching state  $k_{t_S} = (n_{t_S}, m_{t_S})$  in period  $t_S$  given the case is litigated at  $t_L$  and  $d_t^{SL}(n_{t_S}, m_{t_S}, t_L)$  is the indicator of settlement in period  $t_S$  at state  $(n_{t_S}, m_{t_S})$  given the case is litigated at  $t_L$ . The probability of reaching judgment can be calculated similarly. If players do not settle for the whole period in Phase  $L$  between  $t_L+1$  and  $t_L+T$ , the case reaches judgment ( $s = JUDGE$ ) by the court. Hence, I can write the probability of reaching judgement as

$$\Pr(JUDGE | t_L, FILE) = \sum_{n_T=0}^T \sum_{m_T=0}^T q_T^L(n_T, m_T, t_L) [1 - d_t^{SL}(n_T, m_T, t_L)].$$

In some cases, players may settle in Phase  $O$  and there will be no litigation. Thus, the probability of observing settlement at date  $t_S$  without litigation ( $l = NOFILE$ ) is

$$\Pr(t_S, SETTLE|\emptyset, NOFILE) = \sum_{n_{t_S}=0}^{t_S} \sum_{m_{t_S}=0}^{t_S} q_{t_S}^O(n_{t_S}, m_{t_S}) d_t^{SO}(n_{t_S}, m_{t_S}),$$

where  $q_{t_S}^O(n_{t_S}, m_{t_S})$  is the probability of reaching state  $k_{t_S} = (n_{t_S}, m_{t_S})$  in period  $t_S$ , and  $d_t^{SO}(n_{t_S}, m_{t_S})$  is the indicator of filing lawsuit at  $t_S$  given the state  $k_{t_S}$ .

Regarding payment and cost, I compute conditional probabilities for payment and cost to fall into bins  $x_k$  and  $c_k$  since supports of payments and costs are continuous. A piece of information that affects payment but that is unobservable to the econometrician is the identity of the proposer. The identity of the proposer at the time of the settlement affects the payment as shown by both Propositions 1 and 2. Thus, we will consider this in computing the probability. Let  $d^p$  and  $d^d$  be the indicator function such that

$$\begin{aligned} d^p(n_t, m_t, x_k, t_S, t_L, FILE) &= I\{-\beta [E_t V_{t_S-t_L+1}^d(n_{t_S+1}, m_{t_S+1}) + C_L] = x \in x_k\}, \\ d^d(n_t, m_t, x_k, t_S, t_L, FILE) &= I\{\beta E_t [V_{t_S-t_L+1}^p(n_{t_S+1}, m_{t_S+1})] = x \in x_k\}, \\ d^p(n_t, m_t, x_k, t_S, \emptyset, NOFILE) &= I\{-Y_t^d(n_{t_S}, m_{t_S}) = x \in x_k\}, \\ d^d(n_t, m_t, x_k, t_S, \emptyset, NOFILE) &= I\{Y_t^p(n_{t_S}, m_{t_S}) = x \in x_k\}. \end{aligned}$$

Because nature chooses the plaintiff as proposer with probability  $\phi$  and the defendant with probability  $1 - \phi$ , the probability of observing payment  $x$  falling into bin  $x_k$  given the settlement date  $t_S$  and the litigation date  $t_L$ , is

$$\begin{aligned} &\Pr(x \in x_k | t_S, SETTLE, t_L, FILE) \\ &= \sum_{n_{t_S}=0}^{t_S} \sum_{m_{t_S}=0}^{t_S} \phi q_{t_S}^L(n_{t_S}, m_{t_S}, t_L) d^p(n_{t_S}, m_{t_S}, x_k, t_S, t_L, FILE) \\ &\quad + \sum_{n_{t_S}=0}^{t_S} \sum_{m_{t_S}=0}^{t_S} (1 - \phi) q_{t_S}^L(n_{t_S}, m_{t_S}, t_L) d^d(n_{t_S}, m_{t_S}, x_k, t_S, t_L, FILE). \end{aligned}$$

Similarly, I can express the probability of payment to be in bin  $x_k$  with settlements

without lawsuit in Phase  $O$  as

$$\begin{aligned}
& \Pr(x \in x_k | t_S, \text{SETTLE}, \emptyset, \text{NOFILE}) \\
&= \sum_{n_{t_S}=0}^{t_S} \sum_{m_{t_S}=0}^{t_S} \phi q_{t_S}^O(n_{t_S}, m_{t_S}) d^p(n_{t_S}, m_{t_S}, x_k, t_S, \emptyset, \text{NOFILE}) \\
&\quad + \sum_{n_{t_S}=0}^{t_S} \sum_{m_{t_S}=0}^{t_S} (1 - \phi) q_{t_S}^O(n_{t_S}, m_{t_S}) d^d(n_{t_S}, m_{t_S}, x_k, t_S, \emptyset, \text{NOFILE}).
\end{aligned}$$

If a case reaches judgement, the identity of the proposer does not matter because there is no bargaining taking place. The defendant pays the amount the jury awards if he loses, and makes no payments otherwise. Hence, I can express the density of the payment in judgment as

$$\Pr(x \in x_k | t_S, \text{JUDGE}, t_L, \text{FILE}) = \begin{cases} 1 - \pi & \text{if } x = 0 \\ \pi \Pr(\beta^{-t} V = x \in x_k) & \text{if } x > 0. \end{cases}$$

Probabilities that the total defense cost  $C$  will fall into a bin  $C_k$  can be computed similarly. For cases settled after filing lawsuit, the probability of total defense cost falling into a bin  $C_k$  is calculated as

$$\begin{aligned}
& \Pr(C \in C_k | t_S, \text{SETTLE}, t_L, \text{FILE}) \\
&= \begin{cases} 1 & \text{if } C = t_L C_O + (t_S - t_L) C_L \in C_k \\ 0 & \text{if } C = t_L C_O + (t_S - t_L) C_L \notin C_k, \end{cases}
\end{aligned}$$

while those for the cases settled without filing can be written as

$$\begin{aligned}
& \Pr(C \in C_k | t_S, \text{SETTLE}, \emptyset, \text{NOFILE}) \\
&= \begin{cases} 1 & \text{if } C = t_S C_O \in C_k \\ 0 & \text{if } C = t_S C_O \notin C_k. \end{cases}
\end{aligned}$$

Regarding the cases concluded by a court judgement, we can calculate it similarly as

$$\begin{aligned}
& \Pr(C \in C_k | t_S, \text{JUDGE}, t_L, \text{FILE}) \\
&= \begin{cases} 1 & \text{if } C = t_L C_O + (t_S - t_L) C_L \in C_k \\ 0 & \text{if } C = t_L C_O + (t_S - t_L) C_L \notin C_k, \end{cases}
\end{aligned}$$

This completes the computation of conditional probabilities.

**Observed and Unobserved Heterogeneity** I allow for unobserved heterogeneity in several dimensions. For instance, given two cases that are resolved by court judgment, the time to judgment  $T$  can significantly differ across cases. For example, congestion in the legal system in a particular jurisdiction affects the time to judgment  $T$ . Hence, I need to assume an unobserved heterogeneity on the exogenous parameter  $T$ . I assume  $T$  to follow a negative binomial distribution which is a flexible distribution with discrete support. I denote the cumulative distribution function (CDF) of  $T$  by  $F_T(\cdot)$  with parameters  $\psi_{0T}$  and  $\psi_{1T}$ .

The statute of limitation period  $\bar{T}$ , which is also exogenous in the model, also differs across cases though the statute of limitation date for medical malpractice litigation in Florida is set at 2 years. The legally determined statute of limitation period is not the actual length of time player can bargain without filing a lawsuit. The statute of limitation is legally counted from the date of the occurrence of incident, but the bargaining does not necessarily begin on the date of occurrence. For example, a plaintiff may begin bargaining 8 months after the occurrence of the incident, which leaves him 16 months before filing if the legal length of the statute of limitation is 24 months. I assume  $\bar{T}$  to follow a negative binomial distribution which is a flexible distribution with discrete support. I denote their CDFs by  $F_{\bar{T}}(\cdot)$  with parameters  $\psi_{0\bar{T}}$  and  $\psi_{1\bar{T}}$ .

Another factor that may differ from case to case is the probability of winning  $\pi$  as well as the initial beliefs. Cases differ on the likelihood of plaintiff's winning depending on many factors which are difficult to observe in the data. Hence, I let the winning probability  $\pi$  to differ from case to case, and draw it from a beta distribution  $F_{\pi}(\cdot)$  with parameters  $\pi_1$  and  $\pi_2$ .

Similarly, cases that are resolved by court judgment may also have very different potential jury awards  $V$  depending on the unobserved characteristics of the case, composition of the juries, and other factors. Hence, I consider unobserved heterogeneity in  $V$ . Potential jury awards  $V$  can also depend on some of the patient characteristics that is observable in the data such as the age of the patient. Thus, I will also consider  $V$  to depend on the age of the patient. I categorized patients' age into very young (before 22 years old, denoted as group 1), young (ages 23-44, denoted as group 2), middle (ages 45-65, denoted as group 3), and old (above 65 years old, denoted

as group 4). I assume that for group  $i$ ,  $V$  follows a log-normal distribution  $F_{V_i}(\cdot)$  with mean and variance denoted by  $\mu_{V_i}$  and  $\sigma_V^2$ . Note that the computational time increase linearly with the number of the groups because the equilibrium have to be recalculated for different values of  $\mu_{V_i}$ .

The per-period legal cost of the defendant also differs across cases due to factors such as the law firm the defendant employs or some unobserved characteristics. Given a case, however, the per-period legal cost after filing a lawsuit is most likely to increase due to the increase in the hours worked by the lawyers to prepare more documentations. Hence, I reparametrize  $C_L$  by a new parameter  $\alpha$  so that  $C_L = (1+\alpha)C_O$ . Since the degree of the increase of the per-period legal cost depends on the characteristics of the case, as well as the law firm employed for the case, I assume  $\alpha$  to have unobserved heterogeneity. Therefore, I consider unobserved heterogeneity in both pre-litigation and litigation phase legal cost and assume them to follow log-normal distributions whose cumulative distribution functions are denoted by  $F_C(\cdot)$  and  $F_\alpha(\cdot)$ , with parameters  $\mu_C, \sigma_C^2, \mu_\alpha, \sigma_\alpha^2$  respectively. In addition to the per-period legal cost, I allow an extra cost  $C_{EXt}$  for processing a case quickly.<sup>18</sup> The cost decreases over time and is written as  $C_{EXt} = \max\{C_{EX0} - t \times C_{EX1}, 0\}$ , where  $C_{EX0}$  is drawn from a log-normal distribution,  $F_{C'}(\cdot)$ , with parameters  $\mu_{C'}$  and  $\sigma_{C'}^2$ . For notational convenience, I denote the realization of unobserved heterogeneity by  $Z = \{C_O, C_{EX}, \alpha, \pi, V, T, \bar{T}\}$ .

**Estimation** I use the equilibrium characterization derived by Propositions 1 and 2 to compute the likelihood contribution of each observation. Because I can compute the conditional probabilities of equilibrium decisions (as above), I can now construct the likelihood function. The contribution to the likelihood function of each observation in the sample is equal to the probability of observing the vector of endogenous events  $(x, t_S, t_L, s, l)$  given the vector of the parameters  $\Theta = \{\beta, \theta_d, \theta_p, \rho, \lambda_A, \lambda_B, \pi, \phi, F_T, F_{\bar{T}}, F_\pi, F_C, F_{C'}, F_\alpha, \{F_{V_i}\}_{i=1}^4\}$ . Because I consider unobserved heterogeneity in  $Z = \{C_O, C_{EX}, \alpha, \pi, V, T, \bar{T}\}$ , I need to conduct a Monte Carlo integration over these variables  $Z$  in order to obtain the likelihood which can be written as

$$L(\Theta|x, t_S, s, t, i) = \int \int \int \int \int \int \int \int \Pr(x, C, t_S, s, t_L, l|Z; \Theta, i) dF_C dF_{C'} dF_\alpha dF_T dF_{\bar{T}} dF_{V_i} dF_\pi,$$

<sup>18</sup>The model do not generate the pattern of settlement and litigation that the fraction of settlement and litigation increases from period zero to one and then decreases gradually.

where  $\Pr(x, t_S, s, t_L, l|Z; \Theta, i)$  is computed using the conditional probabilities computed above as follows. I use Monte Carlo integration to compute the integration.

(i) For the cases settled without filing a lawsuit,  $\Pr(x, t_S, s, t_L, l|Z; \Theta)$  is obtained by

$$\begin{aligned} & \Pr(x, C, t_S, s, t_L, l|Z; \Theta, i) \\ = & \Pr(NOFILE|Z, \Theta, i) \times \Pr(t_S|SETTLE, \emptyset, NOFILE, Z, \Theta, i) \\ & \times \Pr(x \in x_k|t_S, SETTLE, \emptyset, NOFILE, Z, \Theta, i) \\ & \times \Pr(C \in C_k|t_S, SETTLE, \emptyset, NOFILE, Z, \Theta, i). \end{aligned}$$

(ii) For the cases settled after filing a lawsuit,  $\Pr(x, t_S, s, t_L, l|Z; \Theta, i)$  is computed by

$$\begin{aligned} & \Pr(x, C, t_S, s, t_L, l|Z; \Theta, i) \\ = & \Pr(FILE|Z, \Theta, i) \times \Pr(t_L|FILE, Z, \Theta, i) \times \Pr(SETTLE|t_L, FILE, Z, \Theta, i) \\ & \times \Pr(t_S|SETTLE, t_L, FILE, Z, \Theta, i) \\ & \times \Pr(x \in x_k|t_S, SETTLE, t_L, FILE, Z, \Theta, i) \\ & \times \Pr(C \in C_k|t_S, SETTLE, t_L, FILE, Z, \Theta, i). \end{aligned}$$

while (iii) for the cases resolved by court judgment, I have

$$\begin{aligned} & \Pr(x, t_S, s, t_L, l|Z; \Theta, i) \\ = & \Pr(FILE|Z, \Theta, i) \times \Pr(t_L|FILE, Z, \Theta) \times \Pr(JUDGE|t_L, FILE, Z, \Theta, i) \\ & \times \Pr(t_S|JUDGE, t_L, FILE, Z, \Theta, i) \\ & \times \Pr(x \in x_k|JUDGE, t_L, FILE, Z, \Theta, i) \\ & \times \Pr(C \in C_k|JUDGE, t_L, FILE, Z, \Theta, i). \end{aligned}$$

For the cases resolved by court judgement, I do not condition  $x$  and  $C$  by  $t_S$  because of computational limitation<sup>19</sup>. I take the log of above probability and sum them over all the elements in the sample to obtain the log-likelihood.

---

<sup>19</sup>Since I compute the distribution of equilibrium outcomes using numerical intergration, I need to increase the number of draws significantly in order to obtain reasonable conditional probability for events that occurs with very low probability.

## 5 Results

### 5.1 Parameter Estimates

Estimates are presented in Table 3. Difference in beliefs is significant at the initial stage. Mean of Plaintiff's belief on probability of his winning is  $\theta_p/\rho = 0.9566$ , while mean of defendant's belief on probability of plaintiff's winning is  $\theta_a/\rho = 0.2982$ . We can compare this to the estimated distribution of plaintiff's winning rate, that is  $Beta(3.5850, 3.6150)$ . This implies the mean of plaintiff's winning rate of 0.4979. Hence, both plaintiff and defendant have optimistic view in their belief; though the plaintiff is more optimistic than the defendant.

However, initial beliefs are very weak as shown by  $\rho = 0.005$ . The initial belief will have almost no impact compared to the information learnt in the process.<sup>20</sup> This implies that the learning is playing a very important role. Arrival rate of information at  $t$  in pre-litigation stage is  $\lambda_{Ot} = 0.0322 + 0.142 \times t$ , and that of litigation stage at  $t'$ -th period from litigation is  $\lambda_{Lt'} = 0.0466 + 0.292 \times t'$ . Thus, information are more likely to arrive as procedure advances. Also, the arrival rate is much higher once lawsuit is filed. This is very natural result because filing of lawsuit institutionally influences the arrival of new information affecting the outcome of judgment.

Other parameter I allow to differ across stage is the per period legal cost. Mean of defence legal cost per period in pre-litigation phase is \$2,762 with estimated variance of \$4,252. On average, legal cost per period increases 2.115 times after filing of lawsuit and mean legal cost per period in litigation phase is \$5,842. Mean of damage  $V^{21}$  is lowest for Group 4 (Ages 65+) at \$661,050 and highest for Group 2 (Ages 23-44) at \$1,540,143. Group 1 (Ages 0-22) is next to Group 2 at \$1,246,669, and Group 3 (Ages 45-64) is between Group 1 and Group 4 at \$794,672. These differences is most naturally understood by considering the difference in economic damages. Unfortunately, the data for the cases resolved by judgment do not provide breakdown of economic and non-economic damages. Finally, the relative bargaining power

---

<sup>20</sup>For example, if the first information arrived is in favor of the defendant, plaintiff's mean belief on his winning will decrease from 0.956 to 0.033 and defendant's mean belief on plaintiff's winning will decrease from 0.298 to 0.954. One of the reason that updating is very extreme in this model is that the model cannot allow information to have different strength. In order to model different strength for arriving information,  $n^t$  and  $m^t$  must take values more than  $\{0, 1\}$ , which will result in the expansion of state space of  $(n_t, m_t)$ . However, I could not allow such expansion due to the limit of computational power.

<sup>21</sup>This is the amount plaintiff will (potentially) receive if he won the judgment at trial.

between plaintiff and defendant is captured by  $\phi$ .<sup>22</sup> The estimate of  $\phi$  being 0.7757 implies that plaintiff have much stronger bargaining power.

## 5.2 Model Fit

As a result of estimation, I find that the model fits all aspect of the data well. I provide the fit of the model regarding the time to settlement and filing, as well as the compensation payments for different modes of resolution. In Figures 6 and 7, I present the fit of the model to the data on the time to settlement and filing. The model replicates the dynamic patterns of filing and settlement in pre-litigation very well as shown in Figure 6. In particular, the model fits the data on the time to filing, which increase sharply in period 2 and decreases gradually, very well. Regarding settlement in the pre-litigation phase, the magnitude of the fraction is captured correctly. The model under-predicts by about 0.02 for the fraction in periods 3 and 4. Figure 7 shows the fit of the model on the time to settlement after filing a lawsuit. The model captures the shape of the data, which increases for the first several period and then declines gradually. The difference between the predicted fractions of cases settling and the data in the first three periods and the last several periods may result from the linearity assumption on the rate of arrival. This assumption may have prevented the model from capturing some factors in the data.

Figures 8-10 present the fit of the model on the compensation payment. As shown in Figure 8, the fit on payments for the cases resolved by court judgment shows the same pattern as observed in the data. Figure 9 provides the fit of the model with respect to compensation payment for the cases settled after filing. The model replicates the shape of the data with fifth and sixth bins having the largest fractions. The fit of the highest three bins are precise though the fit for the rest of the bins have a gap of 0.05 to 0.1. Figure 10 presents the fit of the model regarding the compensation payment for the cases settled before filing. Similar to Figure 9, the shape is captured generally well, though fit for several bins are not very good. From Figures 9 and 10, the model overpredicts low compensation payment in the litigation phase, while the model overpredicts the high compensation payment for cases settled in the pre-litigation phase.

---

<sup>22</sup>In the model,  $\phi$  is a probability that the plaintiff will be recognized as a proposer. This is a measure of bargaining power in the model because proposer always benefits from proposer advantage, while the other party is only offered the amount equal to his continuation payoff.

Parameter	Estimates
$\beta$	0.9911
$\theta_d$	0.0149
$\theta_p$	0.0478
$\lambda_{O0}$	0.0322
$\lambda_{O1}$	0.0142
$\lambda_{L0}$	0.0466
$\lambda_{L1}$	0.0292
$\pi_1$	3.5850
$\pi_2$	3.6150
$\phi$	0.7757
$\rho$	0.0500
$\mu_C$	7.3165
$\sigma_C^2$	1.1021
$\mu_\alpha$	-0.8472
$\sigma_\alpha^2$	1.7870
$\mu_{V1}$	13.6738
$\mu_{V2}$	13.8852
$\mu_{V3}$	13.2235
$\mu_{V4}$	13.0394
$\sigma_V^2$	0.8511
$\psi_{0T}$	5.4425
$\mu_{C'}$	13.2166
$\sigma_{C'}^2$	1.3944
$C_{EX1}$	68475.02
$\psi_{1T}$	0.0814
$\psi_{0\bar{T}}$	18.9955
$\psi_{1\bar{T}}$	0.7684
Log-likelihood	-29940.66

Table 3: Maximum Likelihood Estimates

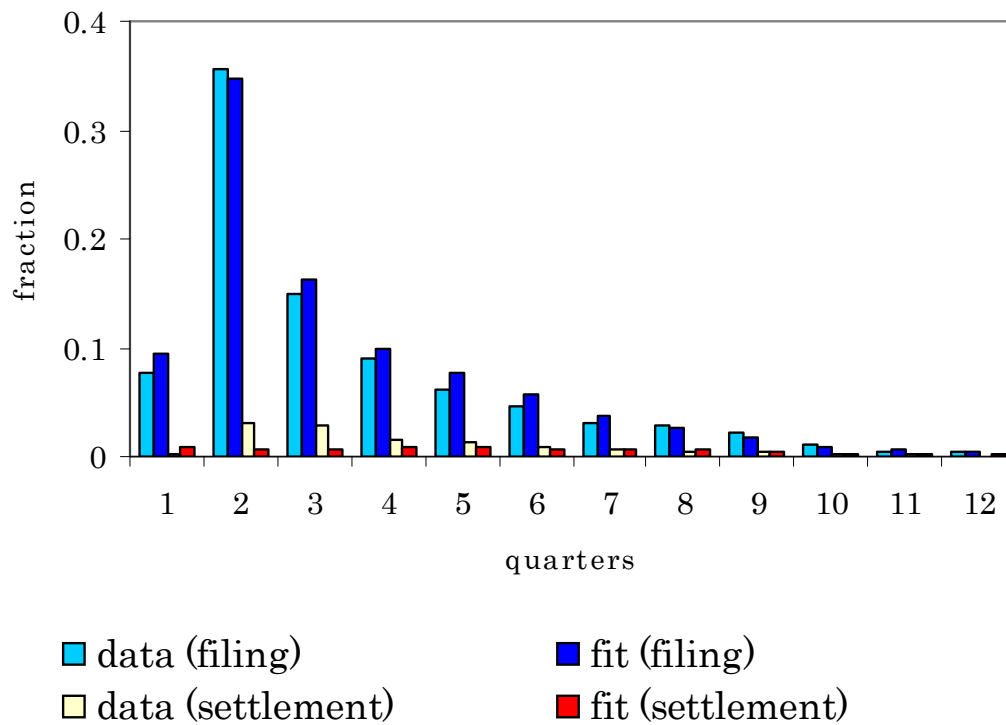


Figure 6: Histogram of Timing for Settlement and Filing

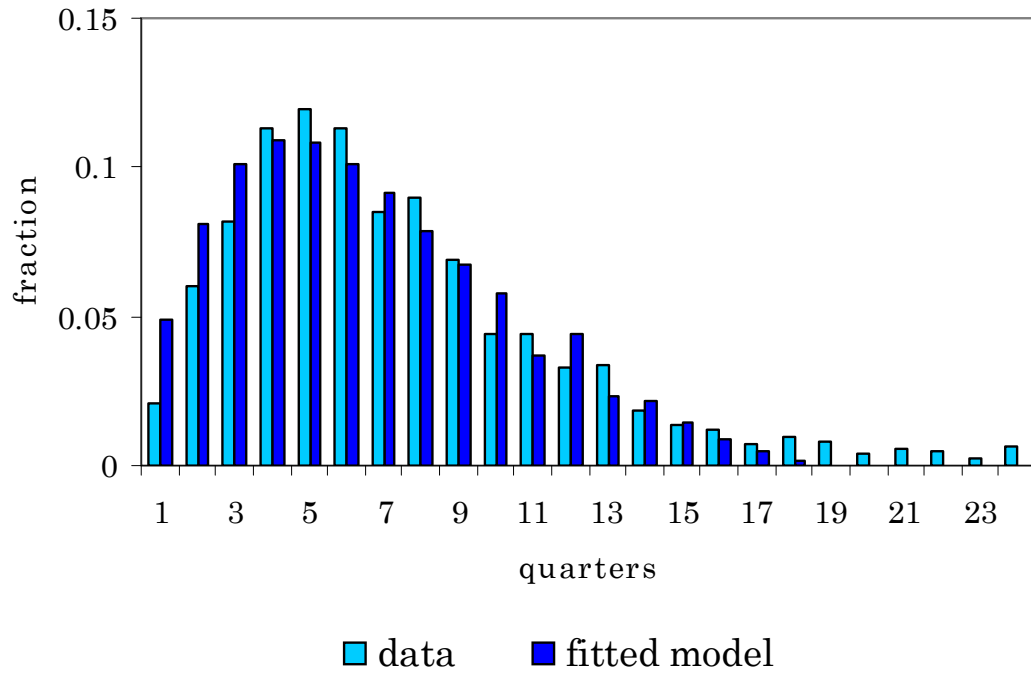


Figure 7: Histogram of Time to Settlement after Filing

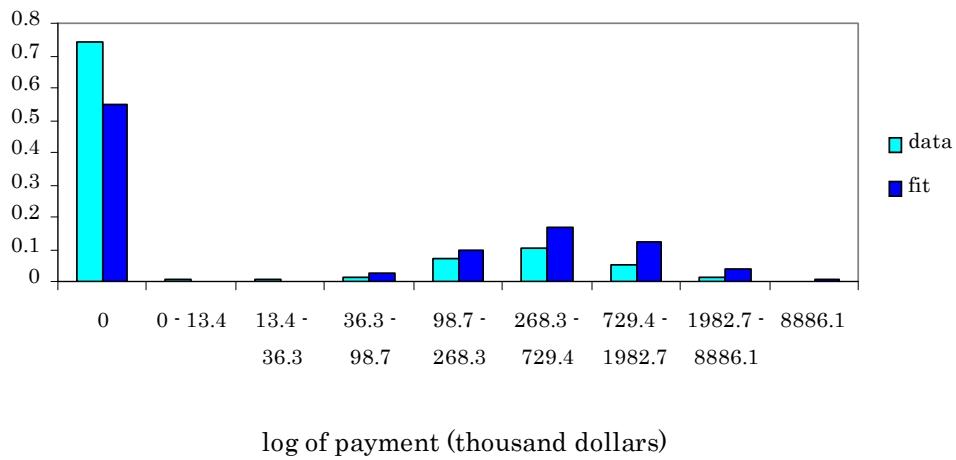


Figure 8: Histogram of Payments for Cases Resolved by Court Judgment

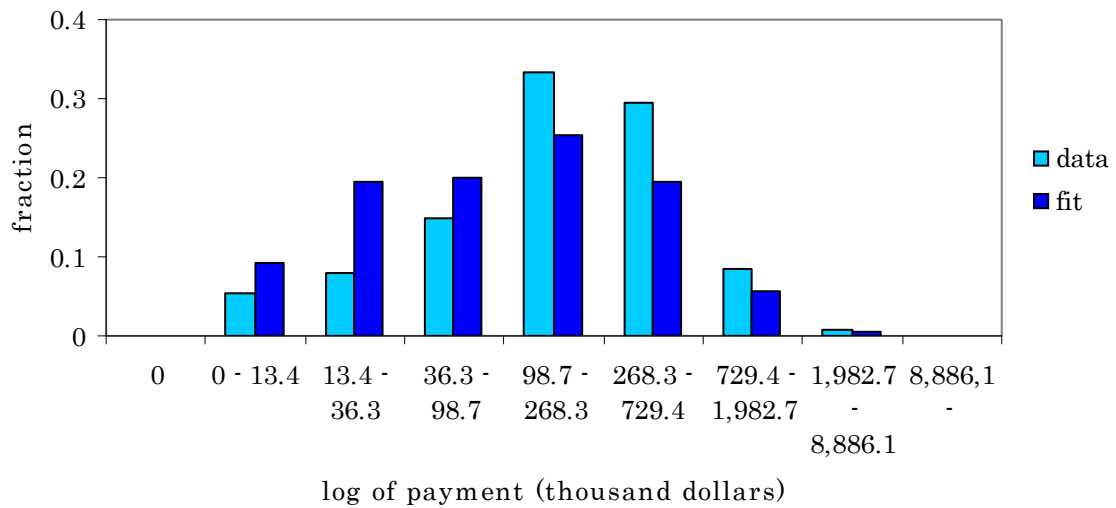


Figure 9: Histogram of Payments for Cases Settled after Filing

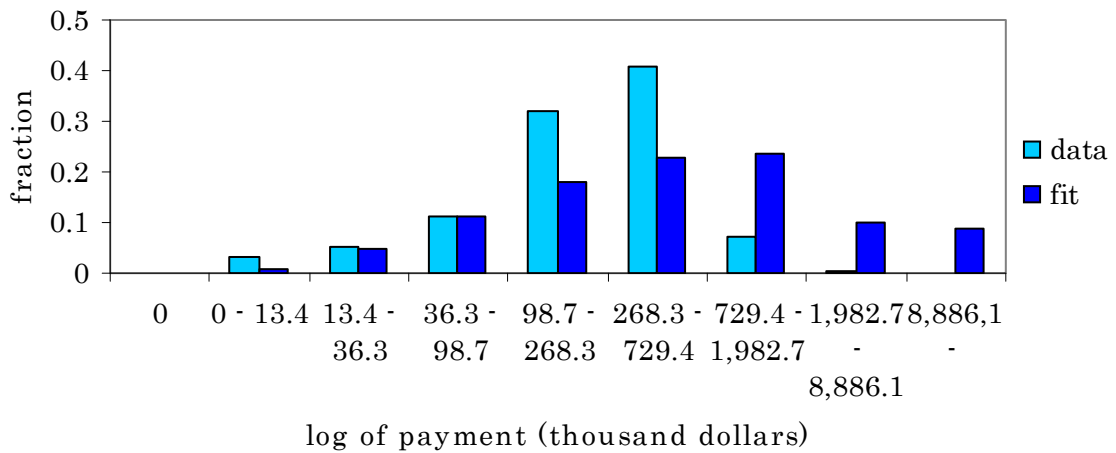


Figure 10: Histogram of Payment for Cases Settled without Filing

## 6 Tort Reform Experiments

A commonly held opinion is that medical malpractice litigation has contributed to rising health care costs both directly, through high litigation costs, and indirectly, through “defensive medicine” aimed at preventing litigation (see e.g., U.S. Congress Joint Economic Committee, 2003). The direct cost of medical malpractice litigation was about \$24 billion in 2002 and has doubled in the past 12 years (Tillinghast Towers-Perrin, 2003). The indirect cost through “defensive medicine” is estimated to be in the order of \$60 billion per year (Pinkerton 1999).

Rising medical malpractice insurance premia due to excessive litigation costs have led to what many believe to be a state of crisis. According to the American Medical Association, 20 states are in a “full-blown medical liability crisis” in which doctors “retire early, relocate or give up performing high-risk medical procedures.”<sup>23</sup> In response to these problems, medical liability reforms, such as caps on jury awards or restrictions on lawyer fees, were adopted in many states during the 1990s and are currently being considered at the federal level.

In this section, I use the estimated model to conduct counterfactual policy experiments on proposed reforms of the medical liability system. Specifically, I consider three policies: (1) cap of \$250,000 on jury award, (2) elimination of the contingency fee rule, and (3) loser-pay-all legal cost allocation. These policies affect the time to resolution and associated legal costs in a way that has important policy implications. Shorter legal procedures would save legal costs for the parties and would benefit society by reducing congestion in the legal system. Savings of legal costs would also lower the deadweight loss of litigation because legal fee is simply a transaction cost to both parties (See, e.g. the classical work of Calabresi (1970)). Also, the doctors would have less incentive to practice defensive medicine if medical malpractice litigations becomes less costly. It is therefore important to try to evaluate the effect of these proposed policies. My approach offers a systematic way of addressing these quantitative issues in the context of an equilibrium framework.

My policy experiment exercise does not intend to answer normative questions nor conduct welfare analysis on tort reform. It rather focuses on positive analysis of the effect on ex-post resolution of medical malpractice claims. My model and data are

---

<sup>23</sup>See the Advocacy section of American Medical Association’s webpage at <http://www.ama-assn.org/>

not about ex-ante incentive of physician. Hence, I cannot quantify the effect of tort reform on physicians' level of precaution, practice of defensive medicine, and exit of physician from market.<sup>24</sup> All of these factors will affect the frequency and types of the claims, which welfare analysis on tort reform should incorporate.

However, this policy experiment exercise is important first step to quantify the effect of tort reform. Ex-ante incentive of physicians' behavior always depends on the payoffs at the ex-post stage. In order to evaluate the welfare effect of tort reform, changes of behavior at the ex-post stage should be identified before we consider its effect on ex-ante incentive of physicians. Thus, my paper provides a building block on normative questions about tort reform by developing a tool to quantify the changes at the ex-post stage.

## 6.1 Caps on Jury Award

The first policy experiment I conduct is a policy to cap the jury award at \$250,000.<sup>25</sup> This policy obviously does not affect cases whose jury award is less than \$250,000 without the cap. Hence, in conducting the policy experiment, I use  $V' = \min\{V, 250000\}$  as the (unobserved) realization of the jury award instead of using the (unobserved) realization of  $V$  from  $F_V(\cdot)$ . As discussed in the model section, decrease in  $V$  enhances early settlement.

The results of the experiment are presented in Table 4. The mean time to resolution is decreased by 14.5% from 9.65 quarters to 8.25 quarters. The decrease mostly comes from the cases settled after filing lawsuit, as observed in Figure 11. The decision in the pre-litigation phase are not substantially affected. The reduction in mean legal cost is 28.7% (from \$45,959 to \$32,489). The reduction of the cost is larger than that of the mean duration, because the reduction of duration is mostly in the litigation phase, which is associated with a higher per-period legal cost than in the pre-litigation phase. The mean payment also decreases by 31.7% (from \$354,910 to \$242,343). This immediately follows from the capping of awards.

---

<sup>24</sup>See, for example, Kessler and McClellan (1996) on the effect of tort reform on defensive medicine, and Klick and Stratmann (2005) on relocation of physicians.

<sup>25</sup>Capping of the jury award is typically on non-economic damages, which include compensation for pain and suffering and punitive damages whose objective is to provide punishment for the malicious or wanton misconduct of the defendant. For example, the HEALTH Act currently in the Congress considers a cap of \$250,000 for non-economic damages and twice the amount of economic damages awarded or \$250,000, whichever is greater, as a cap for punitive damage.

	Expected Time to Resolution  (quarters)	Expected Cost  (dollars)	Expected Payment  (dollars)
Baseline model	9.65	45,959	354,910
Policy Experiment 1	8.25	32,489	242,343

Table 4: Policy Experiment 1: Cap on Jury Award

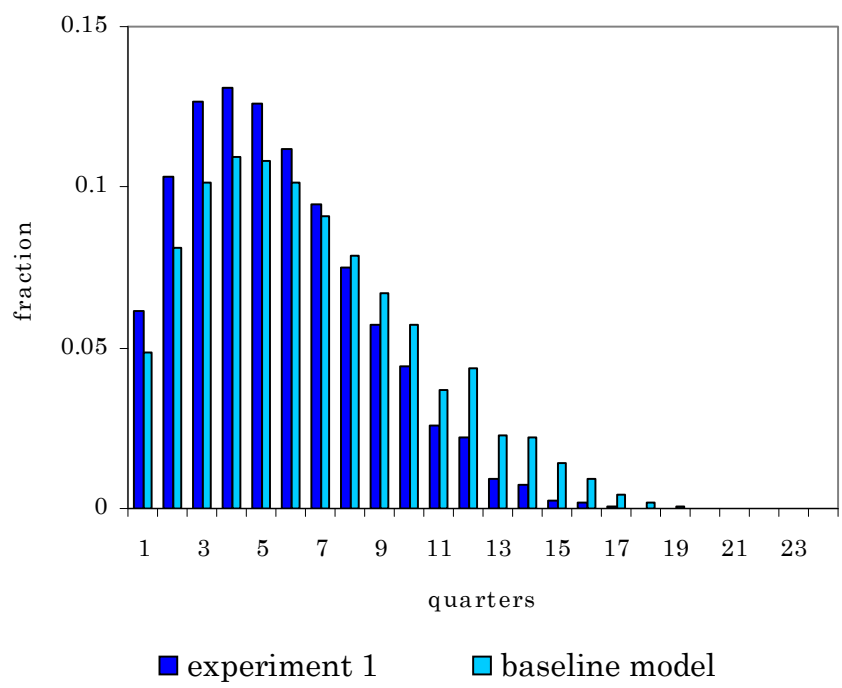


Figure 11: Histogram of Time to Settlement after Filing

## 6.2 Eliminating Contingency Fee Rule

The second policy experiment I conduct is elimination of the contingency fee rule. The contingency fee arrangement, which is employed for vast majority of the cases on injuries in the United States, makes the plaintiff’s lawyers entitled to a fraction (typically one-third to 40%) of the money received from the defendant only if a positive payment is received. The contingency fee arrangement is totally prohibited in many European countries partly because it will increase the level of litigation.

The contingency fee rule allows the plaintiff to continue the case with no direct legal costs per period. Hence, the elimination of the contingency fee, which makes the legal cost of the plaintiff to be accrued as the case prolongs, is likely to result in earlier settlements. In conducting the policy experiment, I assumed that the plaintiff pays per-period legal costs  $C_{pO}$  and  $C_{pL}$  in the pre-litigation and litigation phases, respectively.  $C_{pO}$  and  $C_{pL}$  are drawn from the same distribution that the defendant’s per-period legal costs is drawn. Considering that the legal industry is competitive, it is natural to assume that the cost is drawn from the same distribution both for the plaintiff and the defendant.

	Expected Time to Resolution  (quarters)	Expected Cost  (dollars)	Expected Payment  (dollars)
Baseline model	9.65	45,959	354,910
Policy Experiment 2	6.68	38,184	108,884

Table 5: Policy Experiment 2: Elimination of Contingency Fee Rule

The results of the experiment are presented in Table 5. The mean time to resolution is decreased by 30.7% (from 9.65 quarters to 6.68 quarters). More than 45% of the cases file immediately and settle earlier after filing now that the plaintiff directly incurs per-period legal cost. The reduction in mean legal cost is 16.2% from \$45,959 to \$38,184. The mean payment also decreases, from \$354,910 to \$108,884. The decrease in mean payment is due to a large fraction of cases settled with zero

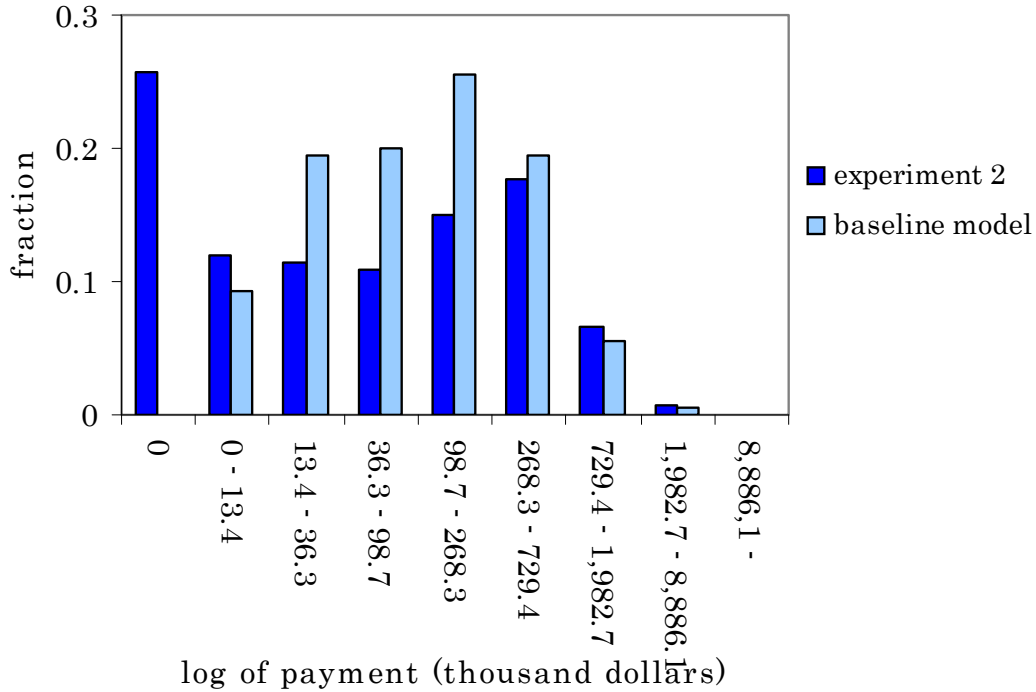


Figure 12: Histogram of Payment for Cases Settled after Filing

payment, which did not occur in the baseline model (see Figure 12).

### 6.3 Loser-pay-all Legal Fee Allocation

The third policy experiment I conduct is the implementation of a loser-pay-all allocation of legal fees. In the United States, parties typically pay the legal cost of their lawyers regardless of the outcome of the judgment (known as the “American rule”). The loser-pay-all legal fee allocation (known as the “English rule”), in contrast, prescribes that the losing party also pays the legal costs of the party prevailing at trial.

In this policy experiment, like in the previous one, I assume the legal cost on the plaintiff’s side, which is incurred by the plaintiff’s lawyer under the contingency fee rule, is drawn from the same distribution as the legal costs on the defendant’s side. Since the legal cost that matters here is the cost after filing a lawsuit, the cost to be shifted if the defendant wins is  $T \cdot C_L$ . Denoting the realization of per-period cost for the plaintiff as  $C_P$ , the legal cost to be shifted if the plaintiff win is  $T \cdot C_P$ . The

	Expected Time to Resolution  (quarters)	Expected Cost  (dollars)	Expected Payment  (dollars)
Baseline model	9.65	45,959	354,910
Policy Experiment 1	10.63	112,114	106,360

Table 6: Policy Experiment 3: Loser-pay-all Legal Fee Allocation

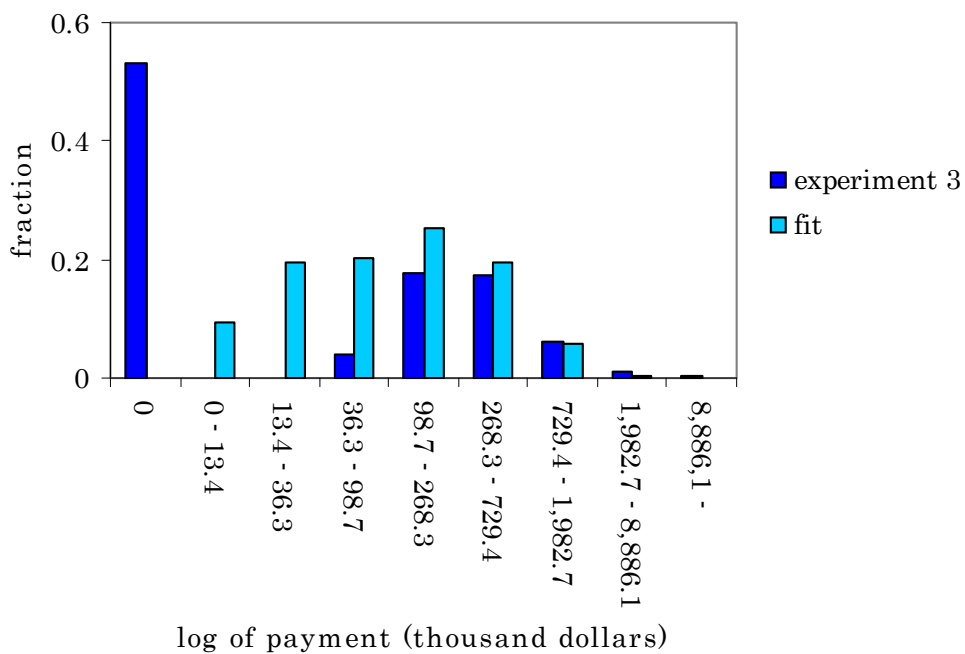


Figure 13: Histogram of Payments for Cases Settled after Filing

outcome of the court case is now  $\{V, -V - T \cdot C_P\}$  with probability  $\pi$  and  $\{-T \cdot C_L, 0\}$  with probability  $1 - \pi$ . Hence, the difference in payoffs between prevailing and losing the verdict is larger under the English rule.

The results of the experiment are presented in Table 6. The mean time to resolution increases by 10.1% (from 9.65 quarters to 10.63 quarters). Increased difference in possible court outcomes prevents parties to settle early. The mean total cost increases from \$45,959 to \$112,114. The mean payment decreases from \$354,910 to \$106,360. The intuition behind this result is following. Trade-off between potential for learning new information and extra legal cost due to delay determines the equilibrium of the model. Now, the value of learning increases with loser-pay-all legal fee allocation because difference in payoff from winning and losing judgement is increased. Hence, settlement timing delays and legal costs increase. The mean payment decreases because the number of cases settled at 0 have increased significantly (see Figure 13).<sup>26</sup>

## 7 Appendix

### 7.1 Appendix A

**Proof (Proposition 1).** Denote the belief of the plaintiff by  $b^p$  and that of the defendant by  $b^d$ . Note that I have no need to consider beliefs to follow a distribution because no learning is taking place. The continuation values at the last stage in the litigation phase are written as

$$\begin{aligned} V_T^p &= \phi\beta \max \{b^d V + C_L, b^p V\} + (1 - \phi)\beta b^p V, \\ V_T^d &= -\phi\beta b^d V - C_L + (1 - \phi)\beta \max \{-b^p V, -b^d - C_L\}. \end{aligned}$$

Note that I no longer have expectation operators or the state variable  $k_t$  because no information arrives and the idiosyncratic shock of arrival of information no longer exists. Following the same argument as in the main text, the players do not settle iff

$$b^p - b^d > \frac{C_L}{V}.$$

---

<sup>26</sup>In this model, plaintiff do not incur any cost by continuing litigation. However, under this policy, I simulated the model with the scenario that the plaintiff may incur a loss if he loses in judgment. This caused plaintiffs with relatively small claims to settle with zero payment.

Suppose that players do not settle at the last stage. In this case the continuation values at the last stage ( $t_L + T$ ) are written as  $V_T^p = \beta b^p V$  and  $V_T^d = -\beta [b^d V - C_L]$ . Hence, the continuation value at  $t = t_L + T - 1$  if players do not settle at  $t = t_L + T$  is

$$\begin{aligned} V_{T-1}^p &= \phi \beta \max \{-V_T^d + C_L, V_T^p\} + (1 - \phi) \beta V_T^p, \\ V_{T-1}^d &= \phi \beta \{V_T^d - C_L\} + (1 - \phi) \beta \max \{-V_T^p, V_T^d - C_L\}. \end{aligned}$$

Players do not settle iff

$$\begin{aligned} C_L &< V_T^p + V_T^d \\ &= \beta [b^p - b^d] V - \beta C_L \\ b^p - b^d &> \frac{(1 + \beta)C_L}{\beta V} \end{aligned}$$

Hence, if players do not settle at  $t = t_L + T - 1$ , they also do not settle at  $t = t_L + T$  since

$$b^p - b^d > \frac{(1 + \beta)C_L}{\beta V} > \frac{C_L}{V}.$$

Following the same reasoning, players settle at  $t > t_L$  iff

$$b^p - b^d \leq \frac{(1 + \beta^{T-t+1})C_L}{(1 - \beta)\beta^{T-t}V}.$$

Given that players settle at the subgame starting at  $t > t_L$ , they always settle in any subgame starting at  $t' < t$ . This is because settlement at  $t$  makes  $V_t^p + V_t^d = 0 < C_L$ , which makes the players settle at  $t - 1$ , which makes the player settle at  $t - 2$ , and so on. Therefore, in the litigation stage game, the players either settle immediately (if  $b^p - b^d > \frac{(1 + \beta^{T+1})C_L}{(1 - \beta)\beta^T V}$ ) or never settle and face judgment (if  $b^p - b^d \leq \frac{(1 + \beta^{T+1})C_L}{(1 - \beta)\beta^T V}$ ).

Now, I consider the pre-litigation phase. I can follow the same reasoning as above to show that if players disagree in the first period, they never agree in the subsequent subgame. In such a case, the plaintiff prefers to file a lawsuit immediately because delaying results in more discounting on the expected award. Hence, the plaintiff files immediately and the case does not spend any time in the pre-litigation phase. Therefore, the players disagree in the first stage, as well as in any stage of the game,

if (by multiplying both sides by  $\beta^T V$ )

$$(b^p - b^d) \beta^T V > \frac{(1 + \beta^{T+1})C_L}{(1 - \beta)},$$

while a case is settled immediately if

$$(b^p - b^d) \beta^T V \leq \frac{(1 + \beta^{T+1})C_L}{(1 - \beta)}.$$

This proves that a case is either settled immediately or judged by the court. ■

## References

- [1] Babcock, Linda, George Loewenstein, Samuel Issacharoff, and Colin Camerer, (1995) “Biased Judgments of Fairness in Bargaining,” *American Economic Review*, 85, pp. 1337-1343
- [2] Babcock, Linda and Greg Pogarsky, (1999) “Damage Caps and Settlement: A Behavioral Approach,” *Journal of Legal Studies*, 28, pp. 341-370
- [3] Bebchuk, Lucian A. (1984) “Litigation and settlement under imperfect information,” *Rand Journal of Economics*, 15, pp. 404-415
- [4] Bebchuk, Lucian A. (1996) “A new theory concerning the credibility and success of threats to sue,” *Journal of Legal Studies*, 25, pp. 1-25.
- [5] Calabresi, Guido, (1970) *The Costs of Accidents: Legal and Economic Analysis*, Yale University Press, New Haven CT
- [6] Cooter, Robert D. and Daniel L. Rubinfeld, (1994) “ An Economic Model of Legal Discovery,” *Journal of Legal Studies*, 23, pp. 435-463
- [7] Farber, Henry S. and Michelle J. White, (1991) “Medical Malpractice: An Empirical Examination of the Litigation Process,” *RAND Journal of Economics*, 22, pp.199-217
- [8] Fenn, Paul and Neil Rickman (1999): “Delay and Settlement in Litigation,” *Economic Journal*, 109, pp. 476-491

- [9] Fournier, Gary M. and Thomas W. Zuehlke, (1996) "The timing of out-of-court settlements," *Rand Journal of Economics*, 27, pp. 310-321
- [10] Hughes, James W. and Snyder, Edward A. (1995) "Litigation and Settlement under the English and American Rules: Theory and Evidence." *Journal of Law and Economics*, 38, pp. 225-50
- [11] Kessler, Daniel P. (1996) "Institutional Causes of Delay in the Settlement of Legal Disputes," *Journal of Law, Economics, and Organization*, 12, pp. 432-460
- [12] Kessler, Daniel P. and Daniel L. Rubinfeld (2004) "Empirical Study of the Civil Justice System," *NBER Working Paper 10825*
- [13] Kessler, Daniel P. and Mark B. McClellan (1996) "Do Doctors Practice Defensive Medicine," *Quarterly Journal of Economics*, Vol 111(2), pp. 353-390
- [14] Klick, Jonathan and Thomas Stratmann (2005) "Does Medical Malpractice Reform Help States Retain Physicians and Does It Matter?" mimeo
- [15] Landes, W.M. (1971) "An Economic Analysis of the Courts," *Journal of Law and Economics*, 14, pp. 61-107
- [16] Nalebuff, Barry (1987) "Credible Pretrial Negotiation," *RAND Journal of Economics*, 18, pp. 198-210
- [17] Pinkerton, James P., (1999) "HMO's Don't Cause Health Care's Fever," *Newsday*, August 12, A45
- [18] Posner, R (1972) "The Behavior of Administrative Agencies," *Journal of Legal Studies*, 1, pp. 305-347
- [19] Priest, George L., and Benjamin Klein (1984) "The Selection of Disputes for Litigation," *Journal of Legal Studies*, 13, pp.1-56
- [20] Reinganum, Jennifer F. and Louis L. Wilde (1986) "Settlement, Litigation and the Allocation of Litigation Costs", *RAND Journal of Economics*, 17, pp. 557-566

- [21] Sieg, Holger (2000) “Estimating a Bargaining Model with Asymmetric Information: Evidence from Medical Malpractice Disputes,” *Journal of Political Economy*, Vol 108(5), pp. 1006-1021
- [22] Sloan, Frank A., Penny B. Githens, Ellen Wright Clayton, Gerald B. Hickson, Douglas A. Gentile, and David F. Partlett (1993) *Suing for Medical Malpractice*, University of Chicago Press, Chicago IL
- [23] Snyder, Edward A. and James W. Hughes (1995) “Litigation and Settlement under the English and American Rules: Theory and Evidence,” *Journal of Law, Economics, and Organization*, 6, pp. 345-385
- [24] Spier, Kathryn E. (1992) “The Dynamics of Pretrial Negotiation,” *Review of Economic Studies*, 59, pp. 93-108
- [25] Spier, Kathryn E. (2005) “Litigation,” *The Handbook of Law and Economics*
- [26] Tillinghast Towers-Perrin, (2003) *U.S. Tort Costs: 2003 Update* available online at [http://www.towersperrin.com/tillinghast/publications/reports/2003\\_Tort\\_Costs\\_Update/Tort\\_Costs\\_Trends\\_2003\\_Update.pdf](http://www.towersperrin.com/tillinghast/publications/reports/2003_Tort_Costs_Update/Tort_Costs_Trends_2003_Update.pdf)
- [27] US Congress Joint Economic Committee (2003) “Liability for Medical Malpractice: Issues and Evidence.” Online at <http://www.house.gov/jec/tort/05-06-03.pdf>
- [28] Waldfogel, Joel (1995) “The Selection Hypothesis and the Relationship between Trial and Plaintiff Victory,” *Journal of Political Economy*, 103, pp. 229-260
- [29] Wittman, Donald (1989) “Dispute Resolution, Bargaining, and the Selection of Cases for Trial: A Study of the Generation of Biased and Unbiased Data,” *Journal of Legal Studies*, 17, pp. 313-352.
- [30] Yildiz, Muhamet (2003) “Bargaining Without a Common Prior - An Immediate Agreement Theorem,” *Econometrica*, 71, pp. 793-811
- [31] Yildiz, Muhamet (2004) “Waiting to Persuade,” *Quarterly Journal of Economics*, 119, pp. 223-248

- [32] Yoon, Albert, (2001) "Damage Caps and Civil Litigation: An Empirical Study of Medical Malpractice Litigation in the South," *American Law and Economics Review*, 27, pp. 199-227