

Do Report Cards Tell Consumers Anything They Don't Already Know? The Case of Medicare HMOs

Leemore Dafny*

David Dranove**

Estimated responses to report cards may reflect learning about quality that would have occurred in their absence (“market-based learning”). Using panel data on Medicare HMOs, we examine the relationship between enrollment and quality before and after report cards were mailed to 40 million Medicare beneficiaries in 1999 and 2000. We find consumers learn from both public report cards and market-based sources, with the latter having a larger impact. Consumers are especially sensitive to both sources of information when the variance in HMO quality is greater. The effect of report cards is driven by beneficiaries’ responses to consumer satisfaction scores.

*Northwestern University, Kellogg School of Management and NBER: l-dafny@kellogg.northwestern.edu

** Northwestern University, Kellogg School of Management: d-dranove@kellogg.northwestern.edu

We thank two anonymous referees and the editor, Ariel Pakes, for invaluable suggestions. We are grateful for comments by David Cutler, Tom Hubbard, Ilyana Kuziemko, Mara Lederman, Gautam Gowrisankaran, Phillip Leslie, Mike Mazzeo, Aviv Nevo, Dennis Scanlon, Scott Stern, Andrew Sweeting, and participants at various seminars. Laurence Baker, Su Liu, and Robert Town generously shared data with us, and Yongbae Lee, Shiko Maruyama, and Subramaniam Ramanarayanan provided outstanding research assistance. This research was made possible by a grant from The Searle Fund for Policy Research.

1 Introduction

Governments devote substantial resources to developing and disseminating quality report cards in a variety of settings, ranging from public schools to restaurants to airlines. The value of these interventions depends on the strength of market-based mechanisms for learning about quality. For example, the value of reports by the Department of Transportation on airline delays and lost luggage will be minimal if consumers can easily learn about performance along these dimensions through word of mouth, prior experience, or a scorecard created by a private company.

In this study we quantify the effect of the largest public report-card experiment to date, the release of HMO report cards in 1999 and 2000 to 40 million Medicare enrollees, on the subsequent healthplan choices of enrollees. We compare the magnitude of the learning induced by the report cards to that of ongoing, market-based learning, as measured by the trend toward higher-quality plans manifested in the years prior to the intervention. A variety of factors may be responsible for such learning, including word of mouth, referrals by healthcare providers, personal experience, privately-organized report cards, and advertising.

We conclude that both the public report card and market-based learning produced substantial swings in Medicare HMO market shares during the study period, 1994-2002. Market-based learning was largest in markets with private-sector report cards, which provides secondary evidence that report cards are an effective means of disseminating quality information, whether publicly or privately sponsored. The effect of the government-issued report cards is entirely due to customer satisfaction ratings; other reported measures did not affect subsequent enrollment.

Our parameter estimates, obtained from a model of healthplan choice, enable us to simulate the effects of market-based learning and report cards in a variety of scenarios. The

exact magnitudes of both effects depend on the number of plans and their relative quality levels. Some general patterns emerge from the simulations, including: (1) Market-based learning is associated with dramatic (i.e. 30 percent or greater) changes in market shares of high or low-quality plans between 1994 and 2002, where high (low) quality is defined as scoring one standard deviation above (below) the national mean on a composite of six audited measures of healthplan quality; (2) Report-card-induced learning is also associated with sizeable swings in market shares, although the effect is much smaller than cumulative market learning between 1994 and 2002. This is partly due to the low rate of enrollment in low-quality plans by the time the report cards are released; (3) Learning of both types has the greatest impact on market shares when plans are more differentiated; (4) The report cards increased net enrollment in Medicare HMOs, but most of the changes in HMO market shares were due to shifts in enrollment within the HMO market.

In sum, we find that public report cards do tell consumers something they didn't know and wouldn't otherwise have learned on their own. However, we find a more important role for market-based learning about healthcare quality, an intriguing result given the difficulties in measuring quality in this market. Our estimates also suggest that quality reporting is unlikely to generate large increases in the HMO penetration rate among Medicare beneficiaries, one of the stated goals of the report-card intervention.

Our study complements recent economic research on the effects of quality report cards in various settings, ranging from restaurants (Jin and Leslie 2003) to public schools (e.g. Hastings and Weinstein 2007) to HMOs (e.g. Chernew et al. 2006, Jin and Sorensen 2006, Scanlon et al. 2004, and Beaulieu 2002). The Medicare experiment is noteworthy not only for its size and the importance of its target audience, but also for features that enable us to carefully control for and

study behavior that may be correlated with, but not caused by, the report-card intervention. Chief among these is the availability of a lengthy study period, which we use to estimate the pattern of market-based learning that predated the report-card intervention; data on reported as well as *unreported* quality scores, which we use to conduct a falsification exercise; and some data on contemporaneous quality scores, which we include together with the (lagged) reported scores as a robustness check to confirm that measured report-card responses are not in fact reactions to changes in contemporaneous quality.

The paper proceeds as follows. Section 2 provides background on Medicare HMOs and the report card mandate imposed as part of the Balanced Budget Act of 1997. Section 3 summarizes prior related research, and section 4 presents the data. Section 5 describes the main analysis and results, and Section 6 discusses extensions and robustness tests. Section 7 concludes.

2 Medicare HMOs and the Report Card Mandate

Although the vast majority of Medicare beneficiaries are enrolled in fee-for-service “traditional Medicare,” the option of receiving coverage through participating, privately-managed HMOs has been available since the introduction of Medicare in 1966 (Newhouse 2002). Medicare HMOs offer lower out-of-pocket costs and greater benefits in exchange for reduced provider choice and utilization controls. Enrollment in Medicare HMOs grew slowly at first, reaching just 1.8 million, or 5 percent of beneficiaries, by 1993. Between 1993 and 1998, enrollment in Medicare HMOs increased threefold, mirroring enrollment patterns among the privately-insured at large. Figure 1 graphs the HMO penetration rate for Medicare-eligibles and the privately-insured,

nonelderly population between 1993 and 2002. HMO penetration in both populations peaked in 1999, declined through 2003, and has increased slightly since.

Although there have been many changes in the statutes governing Medicare HMOs, throughout our study period (1994-2002) several key features remained intact. First, Medicare reimbursed participating HMOs a fixed amount per enrollee which varied by geographic area, gender, age, institutional and work status, and source of eligibility. Enrollees were required to pay the Medicare “Part B” premium for physician and outpatient care (\$54/month in 2002) directly to the federal government.¹ Second, HMOs were permitted to charge enrollees additional monthly premiums as well as service copayments, subject to regulations designed to prevent profit margins from the HMO’s Medicare business from exceeding profit margins on the HMO’s non-Medicare business. Negative premiums were not permitted.² The result was substantial premium compression from above and below, which constrained the ability of plans to “price out” quality differentials. In every year in our study period, the median enrollee paid no premium at all, and the 75th percentile for monthly premiums ranged between \$15 and \$35.³ Third, during the November “open enrollment” period, plans were required to accept new enrollees for the following January. Most plans also accepted enrollees throughout the year, at

¹ In 2001 and 2002, very small adjustments were also made for enrollees’ health status. Between 1982 and 1997, the payment amount was 95 percent of the average cost for a traditional Medicare enrollee of the same age, gender, institutional status, and eligibility source, living in the same county. Following the BBA, payment rates were a blend of area costs and national costs (beginning with 90:10 and ending at 50:50 by 2003), subject to a minimum annual increase of 2 percent as well as an absolute floor (Newhouse 2002). CMS began implementing a risk adjustment formula in 2000, with transition to full risk-adjustment delayed to 2007 by the Benefits Improvement and Protection Act of 2000. Between 2001 and 2003, only 10 percent of the payment from the blend/floor formula was adjusted for health status, as determined by the enrollee’s “worst principal inpatient diagnosis” to date, if any. As of 2004, CMS began implementing a risk-adjustment formula based on multiple sites of care (Pope et al. 2004, CMS 2004).

² These regulations are summarized in Newhouse (2002). If the combination of Medicare and enrollee contributions exceeded the rate charged to non-Medicare enrollees (adjusted for “arbitrary” utilization factors), plans were required to add benefits, reduce premiums, or refund the difference to the government.

³ Authors’ tabulations using data described in Section 3.

the start of each month. Enrollees were permitted to switch plans or return to traditional Medicare at the end of every month.

The Balanced Budget Act of 1997 (BBA 1997) required all managed care plans participating in the Medicare program to gather and disclose quality data to the Health Care Financing Agency, now known as The Centers for Medicare and Medicaid Services (CMS). Plans must report a set of standardized performance measures developed by the National Consortium for Quality Assurance (NCQA).⁴ These measures are collectively called The Health Plan Employer Data and Information Set (HEDIS[®]).⁵ Beginning in 1998, CMS began supplementing this data by conducting an independent annual survey of Medicare beneficiaries called the Consumer Assessment of Health Plans Study (CAHPS). Respondents are asked a series of questions designed to assess their satisfaction with various aspects of their healthcare, including the communication skills of their physicians and the ease of obtaining care.

BBA 1997 also required CMS to provide Medicare beneficiaries with information about health plans and the enrollment process in November of each year. CMS responded with a multi-pronged educational campaign that included print materials, websites, telephone hotlines, informational sessions, and more (Goldstein et al. 2001). As part of this effort, CMS created a handbook called *Medicare & You*, which is updated and mailed annually to all Medicare eligibles. Both *Medicare & You 2000* (mailed November 1999) and *Medicare & You 2001* (mailed November 2000) contained selected HEDIS and CAHPS scores for most plans operating in the beneficiary's market area; plans with very low enrollments were exempted from reporting HEDIS data. Figure 2 presents an excerpt of the report card printed on pages 28-35 of the 73-

⁴ NCQA is a private not-for-profit organization whose mission is "to improve healthcare quality everywhere." In addition to collecting, standardizing, and releasing HEDIS data, NCQA uses this information to accredit health plans. Many employers refuse to contract with unaccredited plans.

⁵ HEDIS consists of a broad range of measures covering areas such as patient access to care, quality of care as measured by "best practices," provider qualifications, and financial stability.

page *Medicare & You 2001* booklet mailed to Illinois eligibles. The editions since 2001 refer readers interested in quality scores to the Medicare website and a toll-free number.⁶

For the report cards to have a discernible effect on enrollee behavior, the following chain of events must transpire: (1) beneficiaries must read and comprehend the publications or communicate with someone who has done so; (2) beneficiaries must change their beliefs about plan quality in response to the reported scores; (3) these changes must be of sufficient magnitude to imply a change in the optimal plan for some enrollees; (4) some of these enrollees must take actions to switch to their optimal plan. The enrollment changes we examine will only reveal the extent to which these requirements were collectively satisfied by *Medicare & You*.

There are several other formal and informal mechanisms for enrollees to learn about the quality of Medicare HMOs, including word of mouth, prior experience in a private-sector HMO offered by the same carrier, current experience in the Medicare HMO, information provided directly by the HMO, and publications of quality measures for a private-sector HMO offered by the same carrier. Some carriers made their HEDIS scores for private-sector enrollees available on NCQA's website. The popular magazine *U.S. News & World Report* published selected scores for all of these plans in their annual "America's Top HMOs" series from 1996-1998.

Of the 16 percent of beneficiaries who reported seeking managed care information in a nationwide survey conducted in 2001, the majority used non-CMS information sources. The most frequent sources cited were the managed care plans themselves, followed by physicians and

⁶ The quality data was available some months earlier on the web (January 1999) and through the telephone helpline (March 1999). However, surveys suggest this information was rarely accessed through these sources in 1999. A survey performed at 6 case study locations in 1999 showed that only 2 percent of beneficiaries used the internet to obtain *any* Medicare information (Goldstein 1999). By 2001, only 6 percent of beneficiaries reported using the Medicare helpline for any reason (Goldstein et al 2001). We therefore consider the report card mailing to be the primary source of exposure to the quality data, and use 2000 as the first post-intervention year.

their staff, and friends and family (Goldstein et al. 2001). These statistics suggest a substantial role for market-based learning, a hypothesis that is supported by the empirical results.

3 Prior Research

The few empirical papers on market-based learning focus on the ability of consumers to learn about the quality of so-called “experience goods” through personal experience. These studies find rapid learning in markets with low switching costs (e.g. yogurt, Akerberg 2002), but slower learning when switching costs are high (e.g. auto insurance, Israel 2005). Hubbard (2002) finds evidence that consumers also learn through the aggregate experiences of others: vehicle emissions inspectors with low aggregate failure rates enjoy more business, controlling for consumers’ prior experience at these firms.

Studies also suggest that report cards facilitate consumer learning. Jin and Leslie (2003) find that restaurants posting an “A” grade enjoyed a 5-percent revenue boost relative to restaurants posting a “B.” They find no evidence that revenues responded to changes in hygiene scores during the two years before grade cards were posted. There are at least two reasons to expect more market-based learning about Medicare HMOs as compared to restaurants. First, in a broad class of learning models, learning will occur most rapidly in new markets, and the restaurant market is much more mature. Second, market-based mechanisms that facilitate learning are more likely to evolve in healthcare due to the magnitude of spending involved as well as the private incentives for large, private-sector buyers to assess quality.

Several recent studies estimate the impact of healthplan report cards on enrollment decisions. Most pursue a before-and-after research design in which the intervention is a report-card provided by an employer. These studies find small increases in the market share of highly-

rated plans offered to employees of the federal government (Wedig and Tai-Seale 2002), Harvard University (Beaulieu 2002), and General Motors (Chernew et al. 2006 and Scanlon et al. 2002).⁷ If market-based learning is occurring independently of the report cards, even these modest effects may overstate their influence.

Our study design is most similar to Jin and Sorensen (2006), who compare responses of federal retirees (and their survivors) to quality ratings for plans that did and did not make these ratings publicly available (via the periodical *U.S. News and World Report* and a website maintained by the National Committee for Quality Assurance). The report-card effect is measured by the difference in responses. Thus, the “response” to ratings for nondisclosing plans is akin to market-based learning.⁸ Jin and Sorensen find evidence of both effects. Chernew et al (2006) also document a potentially important role for market-based learning. Using data from General Motors, they estimate a formal Bayesian learning model, in which consumers update their priors on plan quality using the signal provided by report cards. They find reported information had a small but statistically-significant impact on consumer beliefs. The high weight on the priors may be due in part to confidence in market-based learning that had already taken place prior to the report-card intervention.

A key advantage of these studies relative to ours is significant variation in plan prices, conditional on all covariates included in the estimating models. This variation identifies enrollee responsiveness to price, which in turn can be used to scale responsiveness to quality into dollar terms. We lack such variation and therefore present our findings in terms of market-share

⁷ The report card released to federal employees included six highly-correlated measures of enrollee satisfaction gathered through mailed survey responses. Wedig and Tai-Seale include two of these measure in their models: overall quality of care and plan coverage. The Harvard and GM report cards included HEDIS measures as well as patient satisfaction scores. Beaulieu (2002), Chernew et al. (2001), and Scanlon et al. (2002) use aggregations of all reported scores in logit models of plan choice.

⁸ Technically, we consider privately-organized report cards to be “market-based” sources, so the term “non-report-card learning” would be more precise here.

responses. These studies also have individual-level data, which facilitates interesting comparisons of behavior across different groups (e.g. new enrollees vs. existing enrollees, families vs. individuals).

Our study contributes to the literature on consumer responses to report cards by controlling for and examining market-based learning that likely confounds estimated report-card responses in many studies, by providing estimates of the relative importance of both types of learning, and by doing so in the context of the largest healthcare report-card experiment to date. The study also complements research on HMO selection by Medicare beneficiaries. Our model of HMO choice is very similar to that employed by Town and Liu (2003), who use a nested logit model and market-share data from 1994-2000 to estimate the welfare effects of Medicare HMOs.

4 Data

We use several datasets available online or through direct requests to CMS. We obtain enrollment data from the Medicare Managed Care Quarterly State/County/Plan Data Files for December of each year from 1994 to 2002.⁹ Enrollment is available at the plan-county-year level, where “plan” refers to a unique contract number assigned by CMS.¹⁰ Note that carriers may offer several different products within the same plan, such as a benefits package that includes prescription drug coverage and one that does not. Enrollment and benefits data is not available at this level of detail throughout the study period. Fortunately, the quality scores in *Medicare and You* were reported at the plan level, so combining enrollment across products within the same plan should not bias the coefficient estimates. Plan-county-year cells with

⁹ <http://cms.hhs.gov/healthplans/statistics/mpscpt>.

¹⁰ CMS assigns unique contract numbers to carriers (e.g. Aetna) for each geographic area they serve. Because these geographic areas are defined by the carriers and areas served by different carriers need not coincide, we follow CMS in considering the county as our market definition.

fewer than 10 enrollees are not included in the data. The enrollment files also contain the base CMS payment rate for HMO enrollees in each county, as well as the total number of Medicare eligibles in each county.¹¹

The plan-level quality measures included in *Medicare & You 2000* and *2001* were extracted from the Medicare HEDIS files and the Medicare Compare Database.¹² Three measures were reported in each booklet: one from the HEDIS dataset, one from the CAHPS survey (included in the Medicare Compare Database), and the voluntary disenrollment rate.¹³ The reported HEDIS measure in both years is *mammography*, the percent of women aged 50-69 who had a mammogram within the past 2 years. The CAHPS measure reported in *Medicare & You 2000* is *communicate*, the percent of enrollees who reported that the doctors in their plan always communicate well. *Medicare & You 2001* replaced *communicate* with *best care*, the percent of enrollees who rated their own care as the “best possible,” a rating of 10 out of 10. The reported HEDIS scores were based on data gathered by plans 3 years prior, while the CAHPS scores and disenrollment rates were lagged 2 years. Appendix Table 1 provides detail on the sources and data years for reported scores.

Although *Medicare & You* reports the disenrollment rate for each plan, we do not include this measure in our analyses because it is a lagged component of the dependent variable (enrollment). The three reported scores we match to the enrollment data are therefore *mammography* from 2000 (which is highly correlated with reported 2001 scores),¹⁴ *communicate*

¹¹ The base payment rate is county and year-specific, and is adjusted to reflect enrollee characteristics. See footnote 1 for details.

¹² HEDIS data is available at <http://cms/hhs.gov/healthplans/HEDIS/HEDISdwn.asp>. CAHPS data is available from the Medicare Compare Database at <http://www.medicare.gov/Download/DownloadDB.asp>.

¹³ Involuntary disenrollment is produced by plan exits. Participating plans must accept all Medicare beneficiaries desiring to enroll.

¹⁴ The correlation coefficient for *mammography* reported in 2000 and *mammography* reported in 2001 is .86.

from 2000, and *best care* from 2001. To facilitate comparisons across measures, we create z-scores for each year and measure.¹⁵

The HEDIS files also include the three measures that were audited by CMS but not included in the publications: *beta blocker* (the percent of enrollees aged 35+ receiving a beta blocker prescription upon discharge from the hospital after a heart attack), *ambulatory visit* (the percent of enrollees who had an ambulatory or preventive-care visit in the past year), and *diabetic eye exams* (the percent of diabetic enrollees aged 31+ who had a retinal examination in the past year). We use these measures to compute *unreported composite*, which is the average of a plan's z-scores on all three unreported measures.¹⁶

Most plans report a single set of quality measures pertaining to all of their enrollees. A small number of plans report data separately by submarket, e.g. San Francisco and Sacramento. These submarkets do not correspond to county boundaries, so we create enrollee-weighted average scores by plan in these cases, using enrollment data reported in the HEDIS files. For plans reporting CAHPS data separately by submarket, we create simple averages by plan because the CAHPS files do not include enrollments, and the CAHPS submarkets do not always correspond to the HEDIS submarkets.

Our sample includes plans with quality data for all six measures. Note the quality data is measured at a single point in time, and it is matched to the panel data on plan enrollments. In Section 6, we describe and utilize the panel data that is available for some of the quality measures.

¹⁵ This normalization produces variables with a mean of zero and a standard deviation of 1, i.e. $z = \frac{x - \bar{x}}{s}$, where

\bar{x} is the sample mean and s the sample standard deviation. When calculating z-scores, we count the scores for each plan only once, and include all plans with nonmissing values for that score. There is no substantive difference between results obtained using normalized and raw scores.

¹⁶ The unreported measures were obtained from the same source as *mammography* in 2000, and therefore pertain to data from 1996-97.

We obtain the minimum monthly enrollee premium for each plan and year from the December Medicare Coordinated Care Plans Monthly Report for 1994-1998, and directly from CMS for 2000-2002.¹⁷ We estimate 1999 premiums using the average of each plan's 1998 and 2000 premiums, where available. We also construct an indicator variable that takes a value of 1 if a plan had an affiliate that was rated at least once by *U.S. News*. A plan is considered to have such an affiliate if both the Medicare plan and the plan appearing in *U.S. News* had a common carrier (e.g. CIGNA, Humana) and state; Medicare plans were not directly included in the *U.S. News* publications.¹⁸

Last, we use the annual March Current Population Survey (CPS) for 1994-2002 to obtain the income distribution for individuals aged 65+. For each year, we calculate the quintiles of the national income distribution. Next, we calculate the fraction of the elderly falling into each quintile for every county. For counties that are too small to be identified in the CPS, we assign figures obtained for the relevant state and year.

Table 1 presents descriptive statistics for the complete plan-county-year dataset. During the study period, HMO enrollment averaged 3,557 per plan-county, or just under 5 percent of eligible enrollees in the county. Nearly two-thirds of the observations come from plans whose affiliates were rated by *U.S. News*. Table 2 provides additional detail regarding the number of competitors in each market and the variation in quality scores within markets. For markets with more than one HMO, we calculate the difference between the maximum and minimum reported quality scores in each market, and report the means in Table 2. The table reveals substantial

¹⁷ The Medicare Coordinated Care Plans Monthly Reports are available at <http://www.cms.hhs.gov/healthplans/statistics/monthly/>. Many plans offer multiple products with varying benefits and premiums. We follow the literature and select the minimum premium.

¹⁸ When the carrier name did not appear as part of the plan name, carrier identity was obtained by examining names in prior and subsequent years, performing literature searches, and searching the Interstudy database of publicly-reported data on HMOs. We do not incorporate the ratings measures reported by *U.S. News* due to the high number of missing values.

variation in quality within markets. For example, in markets with 2 competitors, the mean difference in mammography scores is 8.85 points, or .86 after the scores are normalized. In markets with 3 or more competitors, the mean spread between the highest and lowest-scoring plan is 15.23 points. Table 3 presents a correlation matrix for the quality scores. *Mammography* is highly correlated with *unreported composite*, but uncorrelated with *communicate* and *best care*, the correlated subjective measures from the CAHPS survey.¹⁹

5 Analysis

Each participating market contains plans with different quality levels, so the report-card mandate effectively created hundreds of “mini-experiments” that we use to identify the response to the reported information. Some of the observed changes in enrollments following the mandate may be due to market-based learning, so we control for the underlying trend toward highly-rated plans. Assuming this trend would have continued in the absence of the report cards, we can estimate the report-card effect by comparing the deviation from trend following the intervention. We use the data on unreported scores to conduct a falsification exercise, i.e. to confirm that consumers do not “react” the same way to unreported scores. In section 6 (Extensions and Robustness) we use the limited panel data on quality to confirm that measured report-card responses are not in fact responses to changes in contemporaneous quality.

Methods

We estimate a discrete choice demand model in which each Medicare enrollee selects the option in her county that offers her the highest utility, including the “outside good” represented by

¹⁹ These correlations have been noted by other researchers, e.g. Schneider et al. (2001).

traditional Medicare.²⁰ As is well-known, the standard assumption of i.i.d. errors in consumer utility produces stringent restrictions on the substitution patterns across options. Our utility specification has a separate “nest” for HMOs to permit the substitution among HMOs to differ from substitution between HMOs and traditional Medicare. We also allow individual income to affect the propensity to select any HMO by interacting dummies for the individual’s income quintile with the dummy for the HMO nest.²¹ Quintiles allow more flexibility than a linear interaction with income, and can be reasonably well-estimated given the CPS data available in each market and year. The utility consumer i obtains from selecting plan j in market $c(s)t$ and nest g can be written

$$u_{ijc(s)t} = x_{jc(s)t}\beta - \alpha p_{jc(s)t} + \xi_{jc(s)t} + \varphi_i \zeta_g + (1-\sigma)\varepsilon_{ijc(s)t}. \quad (1)$$

$c(s)t$ denotes a county (within state s) during year t ; the notation $c(s)$ reflects the fact that some variables are at the state rather than the county level. (We follow CMS and consider the county as the market definition.) The $x_{jc(s)t}$ are observed plan-market-year characteristics (described below), $p_{jc(s)t}$ is the monthly premium charged by the plan, $\xi_{jc(s)t}$ represents the mean utility to consumers of unobserved plan-market-year characteristics, ζ_g is a dummy for choices in nest g , and $\varepsilon_{ijc(s)t}$ is an i.i.d. extreme value random error term.²² We define $\varphi_i = d_i\gamma + v_i$, where d_i is a set of dummies for the income quintiles, and v_i is independent random term that reflects individual-specific preferences for HMOs that are uncorrelated with income. As in Cardell (1997) and

²⁰All Medicare enrollees have the same choice set within the county.

²¹Ideally, we would interact additional consumer characteristics, such as health status and wealth, with the choice of the HMO nest; unfortunately, we lack county-year data on these characteristics, and the fixed effects in the specifications preclude the use of more aggregated data. Empirically, however, these three measures are strongly correlated. In addition, researchers studying healthplan choice in the Medicare population have found income to be the strongest predictor of decisions (Dowd et al. 1994).

²²Town and Liu (2003) point out that this premium should be expressed relative to the traditional FFS “premium,” which can be viewed as the expected out-of-pocket costs associated with achieving the same benefits offered by an HMO while enrolling in traditional FFS Medicare. They use Medigap premiums as an estimate of these costs. These premiums are only available at the state-year level, however, so they would not affect the premium coefficient in our models, which include state-year fixed effects.

Berry (1994), we assume the distribution of v_i is such that $v_i + (1-\sigma)\varepsilon_{ijc(s)t}$ is an extreme value random variable. Under this assumption, the parameter σ will range between 0 and 1, with values closer to 1 indicating the within-nest correlation of utility levels is high and values closer to 0 indicating that substitution patterns do not differ across nests. The mean utility of traditional Medicare, denoted by $j=0$, is normalized to zero.

As compared to a reduced-form demand equation, our method not only emerges from a structural model of choice but also corrects for changes in the choice set, e.g. those caused by entry and exit. This model is particularly appropriate for our analysis because of the frequency of healthplan exit in the post-BBA era. It generates consistent utility parameters that do not depend on the specific competitors in a market. We can then use these parameters to measure the effects of report cards, abstracting away from entry and exit that independently affect enrollment. The model captures both movement across HMOs and movement between traditional Medicare and HMOs.

For our primary specification, we define the vector of observed plan-market-year characteristics to be

$$x_{jc(s)t} = \sum_{l=1}^3 [score_j^l * f(year_t) + score_j^l * post_t^l] + \omega_j + \kappa_{c(s)} + \Psi_{st}. \quad (2)$$

This specification includes a separate time trend for each reported score l to capture learning about that score over time, as well as interactions between each score and a *post* dummy to capture deviations from trend following the publication of individual scores. For *mammography* and *communicate*, $post_t^l$ takes a value of 1 beginning in 2000; for *best care*, $post_t^l$ equals 1 beginning in 2001. To determine the functional form for $f(year_t)$, we estimate three separate models in which the score terms in equation (2),

$\sum_{l=1}^3 [score_j^l * f(year_t) + score_j^l * post_t^l]$, are replaced with interactions between a single score and dummies for every year, i.e. $score_j^l * \tau_t$. This specification allows for a flexible learning pattern and easy detection of post-reporting deviations from trend. We cannot include all scores jointly in this manner as the data cannot identify 24 parameters at once (3 scores*8 year dummies), but we use the results from these separate regressions to select $f(year_t)$, and to inform our discussion of the results.

Before discussing the control variables, we make two conceptual remarks. First, our model focuses on *enrollee* responses to report cards; for the most part, plan responses are not incorporated into the analysis. There is, of course, potential for a supply-side response: plans could choose to exit, invest in raising reported scores, reduce quality in unreported dimensions, and/or advertise their quality (although this latter practice is unlikely as it attracts high-risk enrollees).²³ Only the last of these activities will be captured by our study.²⁴ In the final section, we discuss why we are unable to study supply-side responses, and why these responses are likely to be small during the study period. The second point is that our main specification explores the relationship over time between enrollment and *reported* quality, which is measured at a single point in time. This model isolates the effect of the report cards by controlling for the enrollment trend toward highly-rated plans that was evident prior to their release. This trend is

²³ Mehrotra et al. 2006, “The Relationship Between Health Plan Advertising and Market Incentives: Evidence of Risk-Selective Behavior,” *Health Affairs* 25(1): 759-65. In fact, Medicare HMOs successfully recruited healthier-than-average beneficiaries, a practice denounced as “cream-skimming” (Batata 2004, “The Effect of HMOs on Fee-For-Service Health Care Expenditures: Evidence from Medicare Revisited,” *Journal of Health Economics* 23(5): 951-63.) Melhotra et al find “the use of ads that are attractive to healthy patients increased nationally from the 1970s through the 1990s.” Features of such ads include small print, pictures of active seniors, and mentions of “wellness programs.”

²⁴ If plans publicize quality *prior* to the release of report cards, this will be incorporated in the estimate of the market-based learning trends and cause a downward bias in our estimated report-card effect. As noted, however, quality advertising is unlikely, especially in a market where selection is critical for plan profits. Moreover, the report-card response we find is sudden and occurs immediately following the release of the satisfaction score (one year after the other two scores were released).

consistent with market-based learning, but there are other possible explanations. In section 6, we describe a series of extensions and robustness checks we perform to evaluate alternative hypotheses. Note these hypotheses affect the interpretation of the trend coefficients, but not of the estimated report-card effects.

In all specifications, we include plan fixed effects (ω_j) to capture time-invariant differences in the unobservable quality of plans (as perceived by consumers), and county fixed effects ($\kappa_{c(s)}$) to capture time-invariant differences in consumer utility across markets. Such differences can be driven by local demographics, economic conditions, and market structure. For example, HMO penetration in the private sector is larger in urban counties and on the west coast. To the extent that Medicare HMO penetration tracks private sector penetration, county fixed effects will eliminate the time-invariant component of these differences across counties. The county fixed effects also imply that we are examining the relationship between *relative* quality scores within a county and plan market shares in that county. Because changes in national or state economic conditions, preferences, and regulations may be correlated with quality levels and enrollment decisions, we also include state-year fixed effects, denoted by ψ_{st} .

Estimation

To estimate the parameters of the utility function described by (1), we use the approaches delineated in Berry (1994) and Berry, Levinsohn, and Pakes (1995), hereafter BLP. These papers outline estimation methods that can be implemented using data on the distribution of consumer characteristics in each market and the market shares of all products. Market shares are a nonlinear function of the mean utility for products; the utility parameters are recovered by first inverting the equations for market share, and then regressing mean utility on covariates. The inversion formula has a closed-form solution in the case of a logit or a nested logit; in these

models, individual heterogeneity is assumed to be averaged out across the sample, so only the aggregate unobserved characteristic ($\xi_{jc(s)t}$) remains.

In our model, the individual's income quintile is permitted to affect the mean utility of plans within the HMO nest. Applying Berry (1994), we can write the following equation for mean plan utility δ :

$$\delta_{jc(s)t}^q \equiv \ln(s_{jc(s)t}^q) - \ln(s_{0c(s)t}^q) = \alpha p_{js(c)t} + x_{js(c)t} \beta + \xi_{js(c)t} + \gamma^q + \sigma \ln(s_{(j/g)c(s)t}^q), \quad (3)$$

where q denotes income quintiles, $s_{jc(s)t}^q$ denotes absolute market share for plan j in county c (within state s) and year t , $s_{0c(s)t}^q$ denotes absolute market share for the outside good, and $s_{(j/g)c(s)t}^q$ denotes plan j 's market share among HMO enrollees in $c(s)t$. ($s_{(j/g)c(s)t}^q$ is also called the “within group share.”) Note we have replaced $\phi_i \zeta_g$ in equation (1) with gamma γ^q ($q=1,2\dots 5$), which economizes on notation given our specification. (Because we have one nest g we omit the g subscript on γ^q).

We do not observe $s_{jc(s)t}^q$ and $s_{0c(s)t}^q$, so we cannot use (3) as our estimating equation.

The Appendix provides greater detail on how we recover parameter estimates.²⁵ Because the choice of HMO conditional on selecting the HMO nest is a simple logit, the closed-form market share inversion formula can be utilized as part of the procedure to derive mean utilities. However, the choice between the outside good and the HMO nest is a function of individual income, so no closed-form solution for this layer of the choice problem exists. Holding γ^q fixed, we apply BLP's contraction mapping method to obtain the dependent variable for a linear estimating equation:

$$\delta_{jc(s)t} \equiv \alpha p_{js(c)t} + x_{js(c)t} \beta + \xi_{js(c)t} + \sigma \ln(s_{(j/g)c(s)t}). \quad (4)$$

²⁵ We thank Yongbae Lee for developing and implementing our estimation.

The derivation of this equation is presented in the Appendix. γ^q is then estimated via 3-stage GMM where the moment conditions are adjusted to reflect the possibility of serial correlation in errors for the same plan-county.²⁶

Identification

Our model assumes no time-varying omitted variable is simultaneously correlated with any regressor as well as with enrollment. In this section, we discuss our efforts to address omitted variables bias in all the regressors of interest.

Both price and the within-group share in equations (3) and (4) above may be correlated with $\xi_{jc(s)t}$, which represents the mean utility of unobserved shocks to plan quality. Because the model includes plan, county, and state-year fixed effects, correlation between price and the error term will only occur if changes in price for a given plan-county are correlated with changes in quality for that plan-county, controlling for any changes that are common to all plan-counties in that state. Such a correlation would arise, for example, if United Healthcare of Illinois, which operates in several Illinois counties, increased its unobserved quality and price only in Cook County. Correlation between the within-group share and the error term will occur if changes in plan j 's unobservable quality in a given county (controlling for changes common to the state) are correlated with changes in how attractive plan j is relative to other plans available in that county.

Given this potential for omitted variables bias, we include instruments for both measures in all specifications. We follow Town & Liu (2003) in using the following 6 variables in our set of instruments: the minimum, maximum, and mean payment amount by CMS for the other counties in which plan j operates during year t ; the mean number of competing plans in those counties in year t , the one-year lagged number of hospitals in county c , and the one-year lagged

²⁶ To use the terminology of BLP (1995), we modify the moment conditions so as to treat the sum of the moment conditions for each plan-county as a single observation.

number of hospital beds in county c .²⁷ The first four of these reflect the competitive conditions the HMO faces in other markets. If there are economics of scale or scope in operating an HMO, these conditions will be correlated with the costs of operating in county c . The county-level hospital figures should also be correlated with HMO costs, as HMOs in counties with increasing supply should be better-able to negotiate lower input prices.²⁸ These cost-shifters are assumed to be uncorrelated with unobserved quality.

We also use functions of competitors' characteristics as instruments for within-group share. These will be valid instruments if competitors do not alter their product characteristics in response to changes in plan j 's unobserved quality, and if competitors' entry/exit decisions are uncorrelated with changes in plan j 's unobserved quality.²⁹ We use indicator variables for not-for-profit ownership, chain membership, and whether the HMO is organized as an "Independent Practice Association (IPA)."³⁰ These variables are reported annually to CMS and are good individual predictors of $s_{jc(s)t|gc(s)t}$ in separate first-stage regressions.

We take all of the quality*time interactions to be exogenous. In the case of the learning trends, this means we are ruling out any time-varying factors that affect enrollment decisions and are also correlated with plan quality, except those that are common to a given state and year. For example, if high-quality plans within each state are likelier to increase the benefits they provide, increases in the popularity of such plans will reflect these changes and not learning about a given

²⁷ Town & Liu include as instruments the minimum, maximum, and mean premium charged by plan j in the other counties in which it operates in year t . In our data, premium does not vary across the counties in which plan j operates. The difference appears to be due to a different definition of "plan."

²⁸ However, the inclusion of county and state-year fixed effects in the regression leaves little variation in these measures.

²⁹ The inclusion of plan fixed effects relaxes the usual assumptions substantially; rather than positing that observable competitor characteristics are uncorrelated with unobservable plan characteristics, we only require *changes* in observable competitor characteristics to be uncorrelated with *changes* in unobservable plan characteristics.

³⁰IPA-model HMOs contract with independent physicians and groups of physicians, and they tend to offer a broader network of providers than "staff-model" or "group-model" HMOs, in which physicians are fully or mostly employed by the HMO.

quality level. Section 6 provides several tests of this demanding assumption. The identifying assumption for the report-card effect is much less strenuous: it rules out the possibility of changes in omitted factors timed to the report-card release and correlated with reported quality, again excluding any changes occurring statewide. For example, if the BBA included other provisions that differentially affected low- and high-quality plans *within* a given state, and these provisions coincided with the release of the report cards, these would be included in the report-card effect. We discuss this possibility in Section 6.

Results

We begin by examining the results from the specifications using a single reported score interacted with individual year dummies. Figure 3 plots the estimated coefficients on these interactions; the results are presented in Appendix Table 2. The vertical line in each graph signifies the start of the post period for each measure. We draw three conclusions from these graphs. First, mean utility for plans with higher scores is increasing during the study period. Second, the only measure that clearly deviates upward from trend during the post-period is *best care*. Prior to the report-card intervention, plans with high *best care* scores were generating more utility over time, but at a decreasing rate. In the first year after *best care* was reported, the effect of *best care* on utility increased more than it had over the three prior years combined. Third, it appears that a log time trend is more appropriate than a linear time trend for modeling the underlying increase in utility for plans with high scores.³¹

The first column in Table 4 presents results from a model with log trends for each reported score as well as interactions between each reported score and *post*; i.e. the specification in which $x_{jc(s)t}$ is represented by equation (2) above. The reported coefficients are estimates of

³¹The concave trend is consistent with a learning model in which a decreasing percentage of the population learns each year.

the mean marginal utilities associated with the corresponding scores in different years. Thus the positive coefficients on the trend variables imply that consumers value higher-quality plans more over time (at a decreasing rate). The trend for *mammography* is statistically significant at $p < .01$, the trend for *communicate* is marginally significant ($p < .10$), and the trend for *best care* is smaller and imprecisely estimated. As we will see below, the point estimates and statistical significance of the individual trends fluctuate from one specification to the next, but combining the measures into a composite score and estimating a single market-learning coefficient produces sizeable, significant, and stable estimates.

The *post* interactions reveal that plans with high *best care* scores generate significantly more utility following the publication of their scores. Publicizing the scores for *mammography* and *communicate* does not have a significant impact on utility; we easily reject the null hypothesis of equality between either coefficient and *best care*post*.³² The estimate of the nesting parameter, .0.837 (.044), strongly indicates a separate nest for HMOs is appropriate.

In this and all subsequent specifications, the premium coefficient is small and imprecisely estimated. We attribute this result both to premium compression (discussed above), and to the inclusion of state-year fixed effects that absorb nearly all of the variation in premiums that helps to identify this parameter in other studies.³³ As described in Section 5, these fixed effects are important for mitigating omitted variables bias in the score coefficients. The casualty is the price coefficient. Unfortunately, without it we are unable to monetize the value of changes in ratings, as in Chernew et al (2006). As a result, we report all findings in terms of market shares. In

³²The negative coefficient estimate on *communicate*post*, though statistically insignificant, reflects the concave learning trend for *communicate* revealed in Figure 3.

³³A regression of premiums on all of the fixed effects in our model produces an R-squared of 0.79. As we discuss in section 5.4, we obtain a precise and negative estimate of the premium coefficient if we omit state-year fixed effects.

Section 6 (“Other Robustness Checks”), we discuss estimates obtained when state-year effects are omitted and enough variation remains to precisely identify the price coefficient.

The estimates of the income quintile dummies appear at the bottom of each column in Table 4.³⁴ In all specifications, the $\hat{\gamma}^q$ tend to increase in q , and $\hat{\gamma}^3$ and $\hat{\gamma}^4$ are statistically distinguishable from the top (omitted) quintile at $p < .10$ and $p < .001$, respectively. These estimates indicate that the poorest and wealthiest beneficiaries avoid Medicare HMOs. The low penetration among the affluent is easily explained: the carrots of better benefits and lower copays are least valuable for this population. They are better able to finance out-of-pocket expenses, and most likely to have supplemental “Medigap” coverage, often subsidized by former employers. At first blush, the finding that the least affluent are not significantly more likely to enroll in Medicare HMOs than the most affluent is surprising. However, there are at least two plausible explanations for this result.

First, recent data shows that 15 percent of Medicare beneficiaries are also eligible for Medicaid, the public insurance program for the indigent.³⁵ Medicaid is responsible for *all* copays for so-called “dual eligibles,” and these individuals are also entitled to the more comprehensive benefits provided under Medicaid (including prescription drug coverage, which was not offered in traditional Medicare during our study period). Additional groups of low-income beneficiaries (known as “Qualified Medicare Beneficiaries” (QMBs) or “Specified Low Income Medicare Beneficiaries” (SPLIMBs)) who do not qualify for Medicaid can receive subsidies to cover charges associated with traditional Medicare. Hence the poorest beneficiaries

³⁴ Some county-years have few corresponding observations in the CPS, leading to noisy estimates of the income distribution. We experimented by replacing the county-year income distribution with the state-year income distribution for those county-years with fewer than 5, 10 or 20 income observations in the CPS. This had little impact on the estimated parameters, so we retained the original data.

³⁵ http://www.medpac.gov/publications/congressional_reports/Jun04DatabookSec2.pdf

might not benefit from Medicare HMOs.³⁶ Second, lower-income beneficiaries may find it particularly challenging to enroll in a Medicare HMO. Whereas enrollment/reenrollment in traditional Medicare is virtually automatic, selecting and enrolling in a Medicare HMO requires significant cognitive skills and effort. Our results are consistent with a 1988 survey of Medicare beneficiaries in the Twin Cities metropolitan area, which had several Medicare HMOs at the time. This survey found the lowest and highest-income beneficiaries were least likely to enroll in Medicare HMOs (Dowd et al 1994).

Column 2 of Table 4 presents the results obtained by adding *unreported composite*ln(year)* and *unreported composite*post* to the specification in column (1). Again, only *best care* deviates significantly from trend in the post-reporting period. Given the high correlation between *mammography* and *unreported composite*, it is unsurprising that the coefficients on the interactions with these scores are noisily estimated when jointly included. However, we again find significantly different responses to *best care* and *communicate*, despite the high raw correlation of these satisfaction scores. To explore why, we extracted additional measures from the CAHPS survey of consumer satisfaction. We find that one of these measures, “ease of obtaining specialist referrals,” is highly correlated with the component of *best care* that is uncorrelated with *communicate*. Further analysis confirms this factor is driving the observed responsiveness to *best care*.

Given that the market-based learning coefficients on all scores in column 2 are of similar magnitude, and that none is precisely estimated, column 3 replaces the individual trends with a trend for *composite*, which is the average z-score of all 6 measures (i.e. the 3 reported scores as

³⁶ This argument assumes the utility from FFS care with no copays exceeds that of managed care. Although some enrollees may prefer services provided by managed care companies (e.g. a primary physician who is apprised of all health concerns in her role as gatekeeper), surveys suggest the lower out-of-pocket expenses/greater benefits are the main attraction (Gold et al 2004).

well as the 3 unreported scores). This trend is statistically significant at $p < .001$, and the pattern of *post* interactions is unchanged. We use this parsimonious specification for the simulations, extensions, and robustness checks that follow.

Simulations

The magnitudes of the coefficients reported in Table 4 are not readily interpretable. However, we can use them to simulate how enrollee choices in hypothetical markets change over time and in response to the publication of report cards. Any simulation will be sensitive to the assumptions chosen. Our assumptions enable us to focus on the absolute and relative importance of market-based and report-card-induced learning.

In all scenarios we consider, we predict market shares in the presence and absence of the Medicare report cards. We also consider the effects of varying the quality and number of plans. We abstract away from time trends unrelated to consumer learning (the state*year fixed effects) and do not allow for entry and exit. As in the estimation models, the quality scores for each plan are fixed over time. To the extent the report-card mandate stimulated quality improvements and/or exit by low-quality plans, our simulations underestimate the total effect of report cards. The proportion of individuals in each income quintile is set to 20 percent. Below, we discuss the impact of varying this distribution. We set the premiums for all plans equal to zero and treat these as exogenously-determined; due to the small estimated premium coefficients, these assumptions do not impact our results. We select a plan fixed effect (i.e. a measure of unobserved, time-invariant plan-level quality) that generates an average market share of 2.74 percentage points, the nationwide average in 1994. Normalizing the market shares of all plans to this initial value enables us to easily compare growth patterns across plans and markets. Our

assumptions ensure that plans with the same quality scores will have the same average market shares in any given year, although actual shares will differ due to randomly-drawn error terms.

All simulations use parameter estimates and the associated covariance matrix and residuals from the model presented in Table 4, Column 3. There are two potential sources of stochastic variation that affect the predictions obtained from each simulation: the unobserved, time-varying quality of each plan, and the errors in the parameter estimates. To separate these sources of variation, we perform simulations that allow for each in turn. In Table 5, the parameter estimates are held constant. Each entry represents the mean predicted market share (standard error) from 10,000 simulations, each using a different randomly-drawn vector of residuals as the unobserved, time-varying quality of the plans.³⁷ These entries reveal how sensitive the predictions are to idiosyncratic shocks in plan quality. Table 6 presents results for the same hypothetical scenarios as in Table 5, but incorporating 10,000 randomly-drawn vectors from the joint distribution of the parameter estimates. The entries in Table 6 effectively transform the standard errors on the coefficient estimates reported in Table 4 into their impact on market shares.

The first set of scenarios is designed to illustrate learning in typical markets. We look to the data to select the characteristics of such markets. Referring to Table 2, the percent of county-year markets with 1, 2, and 3+ HMO plans on offer is 55, 20, and 14, respectively. However, the percent of HMO enrollees in such markets is 11, 13, and 75, respectively.³⁸ For completeness, we present results for hypothetical markets with 1, 2, and 3 HMO plans.

In the hypothetical monopoly market, we consider 3 alternative quality levels for the sole plan. The “low quality” plan scores 1 standard deviation below the mean on all quality

³⁷ The number of elements in this vector is determined by the number of plans in the scenario.

³⁸ There are 4107 county-year markets in our dataset. Due to rounding error, the percentages do not sum to 100.

measures, the “medium quality” plan scores at the mean, and the “high quality” plan scores 1 standard deviation above the mean. The first page of Tables 5 and 6 presents results for these markets under the assumption of no report cards, i.e. the coefficients on the *post* interaction terms are set to zero and consumer responses to quality derive solely from market-based learning. The second page of both tables incorporates the impact of the report cards; that is, we consider how publicizing the quality scores affects consumer demand beyond what would be predicted by market-based learning alone.

The first observation we make is that the standard errors of the predicted market shares are quite large in Table 5 and relatively small in Table 6. This suggests the predictions in any given scenario are more sensitive to idiosyncratic changes in plan quality than to noise in our parameter estimates. Second, the effects of market-based learning between 1994 and 2002 are large relative to the effect of report-card-induced learning. This is due in part to the pace of market-based learning, which leaves few enrollees in low-quality plans by the time the report cards are released. Thus the report-cards must induce new enrollment from traditional Medicare, a difficult proposition given the low estimated substitutability of traditional Medicare and HMO plans. Third, in all scenarios with multiple plans, the market-based learning effect appears to be much larger, on average (and therefore the report-card learning effect is smaller), when shocks to the parameter estimates are incorporated into the simulations as opposed to shocks to unobserved quality. However, average market shares in the final year (2002) are implausibly small for low-quality firms in this latter set of simulations, suggesting the role of unobserved quality is quite important. Thus our discussion focuses on the results in Table 5.³⁹

³⁹ In the simulations reported in Table 6, the market share of the low-quality plan reaches .03 to .04 percentage points (on average) after the report card is released. According to our data, the lowest-quality plan in markets with multiple plans in 2002 has a market share this low in only 10 percent of markets.

By construction, in monopoly markets a medium-quality plan sees no systematic change in its market share due to learning; this plan earns quality z-scores of zero and beneficiaries are neither tempted to enroll nor disenroll as they learn this information. If the plan is of high (low) quality, market-based learning results in a substantial increase (decrease) in market share over the 9-year study period. The exact amount is on the order of 31-48 percent of enrollment.⁴⁰ The second part of Table 5 illustrates that report cards provide an extra boost (penalty) to the high- (low-) quality plans. The size of the boost is 28 to 43 percent of the market-learning effect.⁴¹

Adding a second plan magnifies the impact of learning, as beneficiaries not only switch to/from traditional Medicare but also among available plans (assuming these plans have different quality scores). Table 5 contains estimates from a duopoly setting with one low and one high-quality plan, as defined above. Figure 4 depicts the results graphically. The solid lines correspond to mean predicted shares without report cards, and the dotted lines include the report-card effects.⁴² The mean market share of the high-quality firm is predicted to double due to market-based learning between 1994 and 2002. Most of this increase comes at the expense of the low-quality HMO, with roughly one-third of additional enrollees coming from traditional Medicare. The report-card effect on market shares is also larger in the duopoly market, but only in absolute terms. Relative to market-based learning, the report-card effect is 16 to 35

⁴⁰ Although the larger estimate is obtained in the high-quality case, suggesting that the reward for high quality exceeds the penalty for low quality, this result is largely driven by the functional form we assume and hence we do not make this inference. (When inverting the market share equation, we take a convex transformation of the quality scores. This has the effect of magnifying increases (or equivalently, minimizing decreases) in quality.)

⁴¹ The relative magnitude is calculated as (Mean market share in 2002 with report card – Mean market share in 2002 without report card)/(Mean market share in 2002 without report card – Mean market share in 1994 without report card).

⁴² Note that our specification does not permit the impact of report cards to vary over time, although the graph suggests otherwise. The reason for this illusion is that different scores are released at different points in time. *Mammography* and *communicate* are released in *Medicare and You 2001*, and *best care* appears in *Medicare and You 2002* (together with updated mammography scores). The estimated coefficient on *communicate*post* is slightly negative, which produces the downward bump in post-report-card enrollment in the high-quality plan.

percent as large. The smaller relative importance of report cards in duopoly markets -- particularly for the low-quality plan -- reflects the smaller pool of enrollees in the low-quality plan by the time *best care* is released in 2002. There are simply very few enrollees left to leave. For the same reason, most of the report-card induced increase in enrollment in the high-quality HMO comes from traditional Medicare, with less than one-third due to further declines in the market share of the low-quality plan.

Last, we introduce a third plan of medium quality. As compared to the medium-quality monopolist, this plan loses market share over time even absent the report cards because some of its enrollees switch into the high-quality plan. The high-quality plan therefore sees bigger enrollment gains over time and as a result of the report card. The magnitude of the report card effect relative to the market-based learning effect ranges from 17 percent (for the low-quality plan) to 52 percent (for the medium-quality plan). This is consistent with the discussion above: the relative importance of report cards depends on how big the gains (losses) are by 2001 (when the *best care* scores were released).

While report-card learning is associated with sizeable swings in HMO market share, the absolute share of enrollees switching plans due to report cards is likely quite low. The exact figures cannot be obtained without individual-level data, as we can only simulate final market shares. In the final scenario in Table 5, net switching associated with the report-cards as of 2002 is only 1.24 percent of beneficiaries.⁴³

Table 7 contains results from a second set of scenarios designed to illustrate the effect of varying the absolute and relative quality levels of plans within a market. For simplicity, we

⁴³ This estimate is obtained by comparing the final market shares with and without report cards in 2002. We add the absolute value of market-share changes due to the report-card, and divide the sum by two. (Note this estimate is only an approximation because we apply the formula to the mean final market shares rather than to the market shares from each individual simulation. We do this in the interest of clarity. The estimate we report for the nationwide response is calculated by averaging the results from each simulation.)

focus on hypothetical duopoly markets. We allow each plan to take on quality scores at the 25th, 50th, and 75th percentiles. This generates 9 unique combinations of scores. All other assumptions are unchanged. The simulations use the same 10,000 random draws from the joint distribution of unobserved plan quality as in Table 5 (duopoly scenario). To consolidate the presentation of our results, we present only the 2002 mean market shares (and standard errors) for both plans under each score combination, assuming report cards are distributed. The 2002 shares should be contrasted with the initial 1994 market share of 2.74 points for each plan; to facilitate these comparisons, the implied percent change in market share is reported in the bottom panel of Table 7.

The results in Table 7 follow from the scenarios already discussed. The entries along the diagonal (quality of both plans is the same) illustrate that the combined market share of HMOs increases in their average quality. The gain to any individual plan from higher quality is largest when it is maximally differentiated from its competitor. When these results are compared to the same scenarios without report cards (tables available upon request), we see that report cards are associated with reallocations that are 19 to 85 percent as large as the reallocations associated with market-based learning. (Consistent with the discussion above, the lowest estimate is obtained from a market with one low-quality plan and one high-quality plan).

In a third set of (unreported) scenarios, we examine the relationship between individual heterogeneity (captured via income) and learning patterns. We find that varying the proportion of individuals in each income quintile has little impact on predicted market shares. This result is due in part to the relative magnitude of the income coefficients, and in part to our utility specification, in which income affects the choice of the HMO nest but not the choice within the HMO nest. Thus, changing the hypothetical income distribution can affect the aggregate market

shares of HMOs, but not the relative shares. Given the low propensity for traditional enrollees of all income groups to switch into HMOs, the impact on market shares of a change in the income distribution is quite small.

In summary, the simulations suggest that both market-based learning and report cards generated substantial swings in the market shares of individual HMOs. Although the impact of report cards on these market shares was substantial, it was smaller than that of cumulative market-based learning during the study period, and the proportion of those exposed to the report cards who actually responded was likely fairly low. The exact figures cannot be obtained without individual-level data, as we can only simulate final market shares. We can estimate *net* switching however, and this amounts to 3.1 percent nationwide.⁴⁴ Given the large estimate of the nesting parameter, switching by Medicare HMO enrollees was likely much greater than switching by traditional Medicare enrollees.

To compare the net switching figure with estimates from other settings, it is helpful to normalize it by the total national market share of Medicare HMOs in 2002, 12 percent. The resulting ratio is fairly large relative to estimates from other settings, such as GM employees (3.9 percent predicted to have switched due to HMO report cards/40 percent of employees initially enrolled in HMOs) and federal retirees/survivors of retirees, (0.7 percent/12.5 percent). The latter estimate is especially interesting because of the similarity of the study populations. Part of the difference is likely due to the fact that *Medicare & You* was directly delivered to all beneficiaries' mailboxes, whereas report cards for federal government HMOs had to be actively located (e.g. by purchasing *U.S. News & World Report*).

⁴⁴ This national estimate is obtained by comparing market shares in 1999 (the year before report cards were released) and simulated market shares under the assumption report cards were available, *ceteris paribus*.

6 Extensions and Robustness

Our baseline model is designed to provide an unbiased estimate of the effect of report cards. The trend variables control for the possibility that enrollees are acting on reported scores ahead of their release; we attribute such behavior to market-based learning. In this section, we describe a series of extensions and robustness checks we perform to evaluate alternative hypotheses for this trend.

Heterogeneity in Learning

We begin by considering the mechanisms through which market-based learning may be occurring. Our interpretation of the trend coefficients as evidence of market-based learning will be bolstered if the data are consistent with hypotheses about how this learning takes place. We examine three potential channels for market-based learning: friends and family (proxied by *stable population*, the share of the 1995 county population still living in the county in 2000); prior HMO experience (proxied by *HMO penetration*, the county Medicare HMO penetration rate in 1994, the start of the study period); and other published report cards (proxied by appearance of affiliated plans in the *U.S. News* “Best HMO” reports).⁴⁵ Descriptive statistics for these proxies are included in Table 1. If word of mouth is a source of learning, we would expect a positive coefficient on the triple interaction term, *composite*ln(year)*stable population*, assuming population stability is correlated with the exchange of information among beneficiaries. If enrollees learn from prior HMO experience, we would expect diminished market-based learning during the study period and therefore a negative coefficient on *composite*ln(year)*HMO penetration*. Finally, if learning is facilitated by other sources of report-card data, we expect a positive coefficient on the interaction between *composite*ln(year)*

⁴⁵ County demographic characteristics are from the U.S. Census Bureau and the 2002 *Area Resource File*.

and *U.S. News*, an indicator for whether all plans in a county have an affiliated plan that appeared at least once in the *U.S. News* publications.

Table 8 reports the results of adding each of these terms, first separately and then jointly, to the baseline specification. The original results from Table 4, column 3 are repeated in column 1, followed by estimates obtained when adding interactions with the county z-score for *stable population* (column 2), the county z-score for *HMO penetration* (column 3), the *U.S. News* indicator (column 4), and all three together (column 5). Note that main effects for the learning proxies are not needed due to the inclusion of county fixed effects in all specifications.

The data support all three mechanisms, with the strongest evidence for learning facilitated by other report cards. The magnitude of the learning coefficient in markets with complete *U.S. News* coverage is nearly double that in markets with incomplete or no coverage.⁴⁶ A one-standard-deviation increase in *stable population* is associated with an increase of roughly 39 percent in the learning coefficient, while a one-standard-deviation decrease in prior HMO experience is associated with an increase of 20 percent. The coefficients on the *score*post* variables are not materially affected by the inclusion of the new interactions.

To further examine heterogeneity in market-based learning and report card effects, we also considered interactions with county-level demographic measures such as the fraction of college graduates and the share of women aged 65-74 (who may be particularly interested in mammography scores of Medicare HMOs). Studies have found that education is correlated with the use of healthcare information (e.g. Feldman et al 2000). We find no significant relationships between these measures and the pace of learning.

⁴⁶ We do not incorporate the ratings measures reported by *U.S. News* due to the high number of missing values. The correlation between *composite* and the overall *U.S. News* rating (which ranges from 1 to 4 stars) is .64 for plans with data from both sources.

Specification Checks Using Contemporaneous Quality

Our estimation strategy uses quality measured at a single point in time (i.e., the quality scores actually reported in the *Medicare & You* handbooks). Ideally, we would add controls for contemporaneous quality. The coefficients on these controls would reflect “real time” market-based learning, while the coefficients on the reported measures would capture learning due to the report cards. Unfortunately, panel quality data is limited to a subset of measures, plans, and years.⁴⁷ However, we are able to estimate a model in which

$$x_{jc(s)t} = \text{mammography}_{j,t-1} + \text{bestcare}_{j,t-1} + \text{reported mammography}_j * \text{post}_t^m + \text{reported best care}_j * \text{post}_t^b + \omega_j + \kappa_{c(s)} + \psi_{st} \quad (5)$$

As before, post_t^m takes on a value of 1 in 2000-2002, and post_t^b takes on a value of 1 in 2001-2002.⁴⁸ Contemporaneous quality is lagged by one year due to the discrete nature of the data available; the earliest that beneficiaries can respond to quality measured during calendar year 1997 is 1998. Given the data limitations, the model can only be estimated using observations from 1999-2002. All instruments are the same as in the main model. Descriptive statistics for the panel data appear in Appendix Table 3.

The results, presented in Table 9, corroborate our main findings. The coefficient estimates on both contemporaneous quality measures are positive and statistically significant, and the *best care* estimate is similar to that obtained in all prior specifications.⁴⁹ Unlike prior

⁴⁷ Data on *mammography* is available for 1996-2001, on *communicate* from 1998-1999, on *best care* for 1998-2002, and on *unreported composite* for 1996-1998.

⁴⁸ Note that *reported mammography* and *reported best care* are the measures labeled as *mammography* and *best care* in the main specifications.

⁴⁹ Because specification 3 is limited to 1999-2002, we use the *mammography* data from 1996-2001 to further confirm that changes in contemporaneous plan quality are not producing the enrollment trend toward highly-rated plans. If plans with high initial quality are more likely to improve their benefits over time, consumers' valuation of these improvements will be captured in the market-based learning term. We therefore regress the change in *mammography* between 1996 and 2001 on *reported mammography* (which is measured in 1997). We obtain a coefficient estimate of 0.08 (0.12), providing little support for this alternative explanation.

results, the *mammography*post* coefficient in this model is positive and statistically-significant. However, the estimated nesting parameter is significantly different from 1, suggesting the modeling assumptions are not satisfied in this sample. We are therefore hesitant to emphasize the findings from this specification.

Plan Benefits

The identifying assumption of the main specification is that no omitted, plan-specific, time-varying factor is correlated with both reported quality and enrollment decisions. Apart from contemporaneous quality (addressed above), plan benefits are the most likely candidate for such a factor. If high-quality plans are more or less likely to increase benefits over time, the trend variable will reflect these characteristics as well as learning about quality. Similarly, if plans react to high reported scores by lowering plan benefits (because they can “afford” to do so in light of their scores), the *post* interaction terms will be downward-biased.

To examine the possibility that changes in benefits are biasing the coefficient estimates, we assemble panel data on prescription drug benefits offered by plans. Prescription drugs accounted for one-third of direct out-of-pocket spending by Medicare beneficiaries in 1999, and likely more for beneficiaries without supplemental insurance policies, the primary target market for Medicare HMOs.⁵⁰ Town and Liu (2003) estimate that 45 percent of the consumer surplus generated by the Medicare HMO program in 2000 was due to prescription drug coverage provided by (some of) the plans. For 1994-2000, we have an indicator of drug coverage for the “base” option within each plan, provided by Town and Liu.⁵¹ For 2000-2004, CMS provided us

⁵⁰ “Direct” out-of-pocket spending excludes premium payments for Medicare and supplemental insurance policies. (Source: “Program Information on Medicare, Medicaid, SCHIP, and other programs of the Centers for Medicare & Medicaid Services,” Office of Research, Development, and Information, June 2002.)

⁵¹ In 1999 and 2000, this indicator varies slightly across counties, so we use the maximum indicator for each plan-year. Town and Liu obtained the 1994-1998 data from the Medicare Coordinated Care Plans Monthly Reports, *ibid.*, and the 1999-2000 data from the Medicare Compare Database.

with indicators of drug coverage for all options within a plan, but we lack the “base” identifier included in the earlier data.⁵² However, the median indicator for each plan in 2000 matches the base plan indicator in 2000 fairly well (sample mean of .85 vs. .83, respectively), so we use the median indicator for 2001-2004.⁵³

Column 4 in Table 4 presents the results from the main specification with the addition of this drug coverage indicator. The coefficient estimate on drug coverage is positive but imprecisely estimated, and the magnitudes of the coefficients of interest are not materially affected. Although prescription drug coverage is but one of the unobserved plan characteristics in our models, this analysis suggests that unobserved changes in plan benefits are not driving the results.

Other Robustness Checks

The BBA included several reforms to the Medicare program, some of which may have induced the observed associations between reported scores and enrollments. We identified a key, testable candidate: a series of provisions designed to increase Medicare HMO penetration in rural counties.⁵⁴ If rural counties have particularly low or high-quality plans, our learning coefficients will reflect these other reforms. We find that 23 percent of the plan-county-year observations in our data are from such counties. The results are unchanged when these observations are dropped. In addition, running the model using only the rural observations yields very similar coefficient estimates.

⁵² We obtained detailed benefits data for all options offered by participating plans in 2000-2004 by direct request to CMS. The base plan is not identified, nor is enrollment data (which might be useful in identifying this plan) included.

⁵³ Note that any systematic change in the drug coverage indicator between 2000 and 2001 will be captured by the year dummies.

⁵⁴ These reforms are summarized in Schoenman (1999). We use the “urban influence” measure developed by the U.S. Department of Agriculture to identify urban areas (defined as counties located in metropolitan areas).

We also considered four additional specification checks. First, we replaced standardized quality scores with actual scores, and found the results were robust to this change. Second, we confirmed that the results are not affected by changing *post* to a common definition for all scores (either taking a value of 1 beginning in 2000, or in 2001). Third, we replaced the premium with a binary price indicator coded as 1 for a positive premium. (Using data on plan switching by University of California employees, Buchmueller and Feldstein (1997) found that most switched out of plans requiring premiums to free plans.) The premium coefficient was again small and imprecisely estimated.

Last, we considered specifications *without* state-year fixed effects. Omitting these effects enables us to obtain a precise estimate of the coefficient on premium (though at the expense of omitted variables bias). In all specifications this estimate is -0.02 to -0.03 and highly significant ($p < .01$).⁵⁵ However, we are hesitant to draw inferences about the effects of plan quality on HMO enrollments from specifications without state-year fixed effects. Overall HMO enrollments were quite volatile during the time period that we study, with rapid growth followed by a dramatic “HMO backlash” (see Figure 1). Moreover, there was substantial variation from state to state in the patterns of growth and decline. To give an example of this variation, between 1995 and 1996, 12 states experienced HMO enrollment growth of 40 percent or more, while 15 states experienced growth of 10 percent or less (with 4 experiencing declining enrollment.)⁵⁶ It is probable that some or even most of this variation was due to factors unrelated to the quality

⁵⁵ This corresponds to a semielasticity of roughly -0.09, i.e. a \$1 increase in the monthly premium is associated with a decrease of 9 percent in an HMO’s enrollment (on average). This estimate is ten times that reported by Town and Liu using Medicare data from 1993 to 2000, although the estimates are not directly comparable because Town and Liu subtract average state-year costs of Medigap plans from premiums to get a price that is relative to the price of the outside good (most Medicare enrollees purchase Medigap plans).

⁵⁶ Interstudy Competitive Edge, HMO Industry Report (1997).

measures reported by Medicare, such as competitive decisions by HMOs and healthplan decisions by large corporations within each state.

We cannot rule out that such variation is correlated with plan quality, however, leaving open the potential for omitted variables bias. For example, if states with higher-quality HMOs suffered bigger enrollment declines in the wake of the backlash (perhaps because there were more HMO enrollees in those states to begin with), and if Medicare HMO enrollments are subject to the same forces as traditional HMOs, then the market learning coefficients will be downward-biased.⁵⁷ The effect of the report cards will then be biased as well, as they are estimated by deviations from the market learning trends.

Our concerns regarding the omission of state-year interactions are corroborated in Appendix Table 4, which corresponds to Table 4 but omits state-year interactions. When learning trends are permitted to vary by quality score, the coefficients on *mammography* and *communicate* trends are *negative* and significant. Although it is highly correlated with *mammography*, the learning trend for *unreported composite* is positive and significant. Pooling the learning trends yields results similar to those reported in specifications without state-year effects, however the general sensitivity of the results to these interactions leads us to pursue the more conservative specification in all other reported results.

⁵⁷ One reason to suspect that this correlation would be large is that HMOs enrolling Medicare beneficiaries in a given state were required to have at least as many enrollees in a commercial HMO (for the privately-insured). The HMO penetration rates for the Medicare and privately-insured population (Figure 1) also reveal very similar aggregate trends.

7 Conclusions

Governments often evaluate the quality of various products and services and publish such information for consumers. The value of these initiatives depends, in part, on the pace at which consumers learn about quality in their absence. The health insurance market, through which nearly 13 percent of GDP flows, is perhaps the most important laboratory for these government initiatives.⁵⁸

Using panel data on Medicare HMOs and a discrete choice demand model, we examine whether and how Medicare enrollees learn about the quality of Medicare HMOs. We arrive at four main conclusions. First, between 1994 and 2002 Medicare enrollees were switching into higher-quality plans *independently* of the government report cards issued in 1999 and 2000, where quality is measured as a composite of the 6 available audited quality scores. This trend, which we call “market-based learning,” was strongest in markets in which *U.S. News* provided report cards, and in which migration and prior HMO experience was relatively low. These findings suggest that market-based learning is facilitated through the private release of report cards, word-of-mouth, and prior experience. The evidence for market-based learning implies that the effect of report cards is typically overestimated.

Second, after controlling for market-based learning, we still find a response to the Medicare report cards. The report-card effect is entirely due to beneficiaries’ responses to consumer satisfaction scores; other reported quality measures such as the mammography rate did not affect enrollment. Given that public report cards are often justified on the grounds that individuals’ subjective opinions are not good measures of the true quality of health care, it is surprising that satisfaction scores were included in the report cards, and potentially disconcerting

⁵⁸ This figure is calculated as the ratio of total national health expenditures, less out-of-pocket expenditures, divided by GDP. Because out-of-pocket expenses are often determined by health insurers, this is certainly an underestimate. Source: *U.S. Statistical Abstract* (1996), Table 118.

that consumers ignored an alternative, objective measure of quality that was also provided. In our data, enrollee satisfaction is uncorrelated with the mammography rate as well as other measures that are believed to reflect best practices in disease screening and prevention. This fact has been documented in several studies of quality measures (e.g. Schneider et al 2001 and Rao et al 2006). Further analysis of unreported satisfaction measures suggests “ease of obtaining specialist referrals” is the component of satisfaction driving our results. Whether this is positively correlated with better health is an open question. Regardless, the emphasis on average enrollee satisfaction creates an incentive for plans to maximize ratings by directing resources toward average enrollees and away from outliers with catastrophic or expensive chronic conditions, precisely the individuals for whom insurance is most valuable.⁵⁹

Third, we find report-card interventions as well as market-based learning have the greatest impact in markets with providers of varying quality levels. Though obvious, this point implies interventions will be most valuable when multiple firms are present, and when these firms are differentiated. It is of course possible that the act of reporting quality data will ultimately lead to differentiation on reported dimensions even if little differentiation is present *ex ante*.

Fourth, our estimates suggest that the Medicare report cards produced substantial swings in market shares among Medicare HMOs (i.e. the “within HMO nest shares”), but only drew a small fraction of enrollees in traditional Medicare into Medicare HMOs. This result is consistent with prior research in the private sector (using PPOs as the outside option), and suggests that

⁵⁹ Prior research on the effect of enrollee satisfaction on health plan choices is mixed. Abraham et al. (2006) find an employee’s self-rated satisfaction with her healthplan is not associated with her propensity to switch, while Buchmueller and Feldstein (1997) find benefit managers’ rating of enrollee satisfaction is associated with enrollees’ propensity to switch.

quality report cards alone will be insufficient to persuade Medicare enrollees to abandon traditional Medicare for Medicare HMOs.

Although our findings pertain to a large and important population, we caution against extrapolating the results to other settings. Studies of healthplan choice reveal that plan switching occurs less frequently among the aged (e.g. Jin and Sorensen 2006). The healthcare needs, preferences, and learning patterns of the elderly might differ significantly from those of the nonelderly.

Evaluating the aggregate welfare effects of government report cards requires complete estimates of supply-side responses, as well as estimates of the effects of healthplan quality on health, and of health on welfare. The latter two subjects are clearly beyond the scope of this paper. As for the former, examining plan responses to *Medicare & You* is difficult due to the absence of pre-mandate quality data, as well as simultaneous changes in Medicare payment rates. Setting aside data and identification concerns, a priori there are several reasons to expect a small response by plans during our study period. First, plans were required to report hundreds of measures, and CMS did not announce which would be publicized to enrollees. As compared to restaurant hygiene inspections, where a final summary grade is posted and the weights on the component scores are known, this setting made it difficult for suppliers to figure out which dimensions to improve. Second, plans may not have anticipated a significant enrollee response to the quality data, both because of assumptions about behavior of the elderly and/or because they underestimated CMS' commitment to disseminating the data. As more recent data becomes available, it will be possible to see whether plans focus disproportionately on improving their scores on measures included in *Medicare & You*. Investigating the extent to which firms “teach to the test” and skimp on unreported quality is an important area for future research, and

one of many inputs that will be needed to estimate the welfare effects of measuring and publicly disclosing quality information.

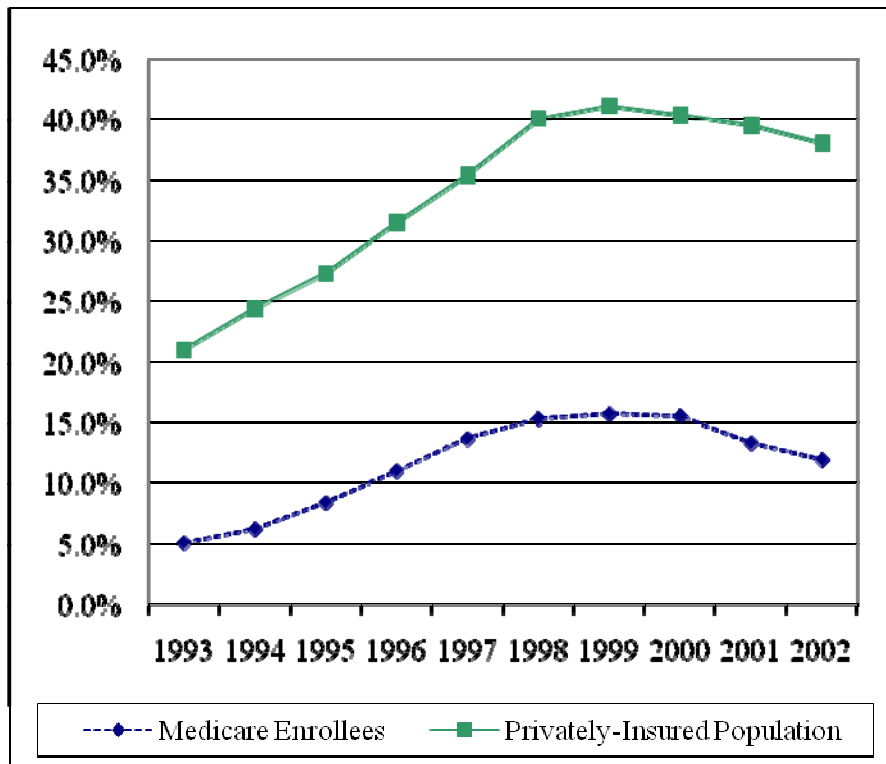
References

- Abraham, J.M, Feldman, R., Carlin, C. and J. Christianson. "The Effect of Quality Information on Consumer Health Plan Switching: Evidence from the Buyers Health Care Action Group." *Journal of Health Economics*, Vol. 25 (2006), pp. 599-802.
- Akerberg, D. A. "Advertising, Learning, and Consumer Choice in Experience Good Markets: A Structural Empirical Examination." *International Economic Review*, Vol. 44 (2002), pp. 1007-1040.
- Beaulieu, N. D. "Quality Information and Consumer Health Plan Choices." *Journal of Health Economics*, Vol. 21 (2002), pp. 43-63.
- Buchmueller, T.C. and P.J. Feldstein. "The Effect of Price on Switching Among Health Plans." *Journal of Health Economics*, Vol. 21 (1997), pp. 43-63.
- Berry, S. T. "Estimating Discrete-Choice Models of Product Differentiation." *Rand Journal of Economics*, Vol. 25 (1994), pp. 242-262.
- Berry, S. T., Levinsohn, J., and A. Pakes. "Automobile Prices in Market Equilibrium." *Econometrica*, Vol. 63 (1995), pp. 841-890.
- Cardell, N.S. "Variance Components Structures for the Extreme Value and Logistic Distributions." *Econometric Theory*, Vol. 13 (1997), p.185-213.
- Centers for Medicare and Medicaid Services. "Program Information on Medicare, Medicaid, SCHIP, and other programs of the Centers for Medicare & Medicaid Services." 2002. Available at <http://www.cms.hhs.gov/charts/series/sec3-b3.pdf>.
- Centers for Medicare and Medicaid Services. "45 Day Notice for 2004 M+C Rates." Available at www.cms.hhs.gov/healthplans/rates/2004/45day-section-a.asp.
- Chernew, M., Gowrisankaran, G., McLaughlin, C. and T. Gibson. "Quality and Employers' Choice of Health Plans," *Journal of Health Economics*, Vol. 23(2004), pp. 471-492.
- Chernew, M., Gowrisankaran, G., and D. Scanlon. "Learning and the Value of Information: Evidence from Health Plan Report Cards," *NBER Working Paper* 8589, 2006.
- Dowd, B., Moscovice, I., Feldman, R., Finch, M., Wisner, C., and S. Hillson. "Health Plan Choices in the Twin Cities Medicare Market." *Medical Care*, Vol. 32, pp. 1019-1039.
- Feldman, R., Christianson, J., Schultz, J. "Do Consumers Use Information to Choose A Health Care Provider System?" *Millbank Memorial Quarterly*, Vol. 78, pp. 47-77.

- Gold, M., Achman, L., Mittler, J., and B. Stevens. *Monitoring Medicare+Choice: What Have We Learned? Findings and Operational Lessons for Medicare Advantage*, August, 2004. Available at www.mathematica-mpr.com/publications/PDFs/monitor.pdf.
- Goldstein, E. "Assessment of the National Medicare Education Program: Supply and Demand for Information." *Health Care Financing Review*, Vol. 21 (1999), pp. 129-131.
- Goldstein, E., Teichman, L., Crawley, B., Gaumer, G., Joseph, C., and L. Reardon. "Lessons Learned from the National Medicare & You Education Program." *Health Care Financing Review*, Vol. 23 (2001), pp. 5-20.
- Hastings, Justine and Jeffrey M. Weinstein. "No Child Left Behind Rules Raise Student Performance." *NBER Working Paper 13009*, 2007
- Hubbard, Thomas N. "How Do Consumers Motivate Experts? Reputational Incentives in An Auto Repair Market." *Journal of Law and Economics*, Vol. 45 (2002), pp. 437-468.
- Israel, Mark. "Services as Experience Goods: An Empirical Examination of Consumer Learning in Automobile Insurance." *American Economic Review* (forthcoming).
- Jin, Ginger Z. "Did Quality Information Matter? Evidence from Medicare 1993-1998." *mimeo*, University of Maryland, 2002.
- Jin, Ginger Z. and Phillip Leslie. "The Effect of Information on Product Quality: Evidence from Restaurant Hygiene Grade Cards." *Quarterly Journal of Economics*, Vol. 118 (2003), pp. 409-51.
- Jin, Ginger Z. and Alan Sorensen (2006), "Information and Consumer Choice: The Value of Publicized Health Plan Ratings," *Journal of Health Economics*, Vol. 25 (2006), pp. 248-275.
- Lederman, Mara. "Do Enhancements to Loyalty Programs Affect Demand? The Impact of International Frequent Flyer Partnerships on Domestic Airline Demand," *RAND Journal of Economics* (forthcoming)
- Ledoit, O. and M. Wolf. "A Well-Conditioned Estimator for Large-Dimensional Covariance Matrices." *Journal of Multivariate Analysis*, Vol. 88 (2004), pp. 365-411.
- Newhouse, Joseph P. "Medicare." In *American Economic Policy in the 1990s*, eds., Jeffrey A. Frankel and Peter R. Orszag; Cambridge: MIT Press, 2002.
- Pope, Gregory C.; Kautter, John; Ellis, Randall P.; Ash, Arlene S.; Ayanian, John Z; Iezzoni, Lisa I.; Ingber, Melvin J.; Levy, Jesse M., and John Robst. "Risk Adjustment of the Medicare Capitation Payments Using the CMS-HCC Model." *Health Care Financing Review*, Vol. 25 (2004), pp. 119-141.

- Rao M., Clarke A., Sanderson C. and R. Hammersley. Patients' Own Assessments of Quality of Primary Care compared with objective records based measures of technical quality of care: cross sectional study. *BMJ*, Vol. 333 (2006).
- Scanlon, D., Chernew, M., McLaughlin, C., and G. Solon. "The Impact of Health Plan Report Cards on Managed Care Enrollment." *Journal of Health Economics*, Vol.21 (2002), pp. 19-41.
- Schneider, E.C., Zaslavsky, A.M., Landon, B.E., Lied, T.R., Sheingold, S., and P.D. Cleary, (2001), "National Quality Monitoring of Medicare Health Plans: The Relationship Between Enrollees' Reports and the Quality of Clinical Care." *Medical Care*, Vol. 29 (2001), pp. 1313-1325.
- Schoenman, J.A. "Impact of the BBA on Medicare HMO Payments for Rural Areas," *Health Affairs*, Vol. 18 (1999), pp. 244-25.
- Stern, S. "Product Demand in Pharmaceutical Markets," *mimeo*, Northwestern University, 1996.
- Town, R. and S. Liu. "The Welfare Impact of Medicare HMOs." *RAND Journal of Economics*, Vol. 34 (2003), pp. 719-736.
- United States General Accounting Office. "HCFA Should Release Data to Aid Consumers, Prompt Better HMO Performance." Report to Congressional Requesters, October 1996.
- Wedig, G. J. and M. Tai-Seale (2002), "The Effect of Report Cards on Consumer Choice in the Health Insurance Market." *Journal of Health Economics*, Vol. 21 (2002), 1031-1048.

Figure 1. HMO Penetration Rates, 1993-2002



Sources: Author's tabulations from the Medicare Managed Care Quarterly State/County/Plan Data files for December 1993-2002; CMS Statistics, National Enrollment Trends; *U.S. Statistical Abstract*, various years.

Figure 2. Example of Medicare Report Card Appearing in *Medicare & You 2001*

**Illinois Managed Care Plans
The Percentage Who Rated Their Own Care as the Best Possible
Care (a rating of 10)**

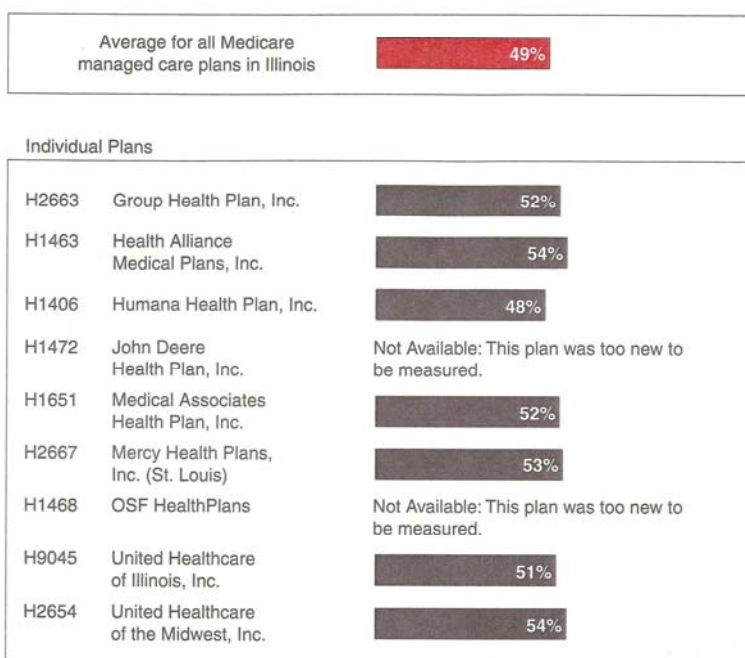
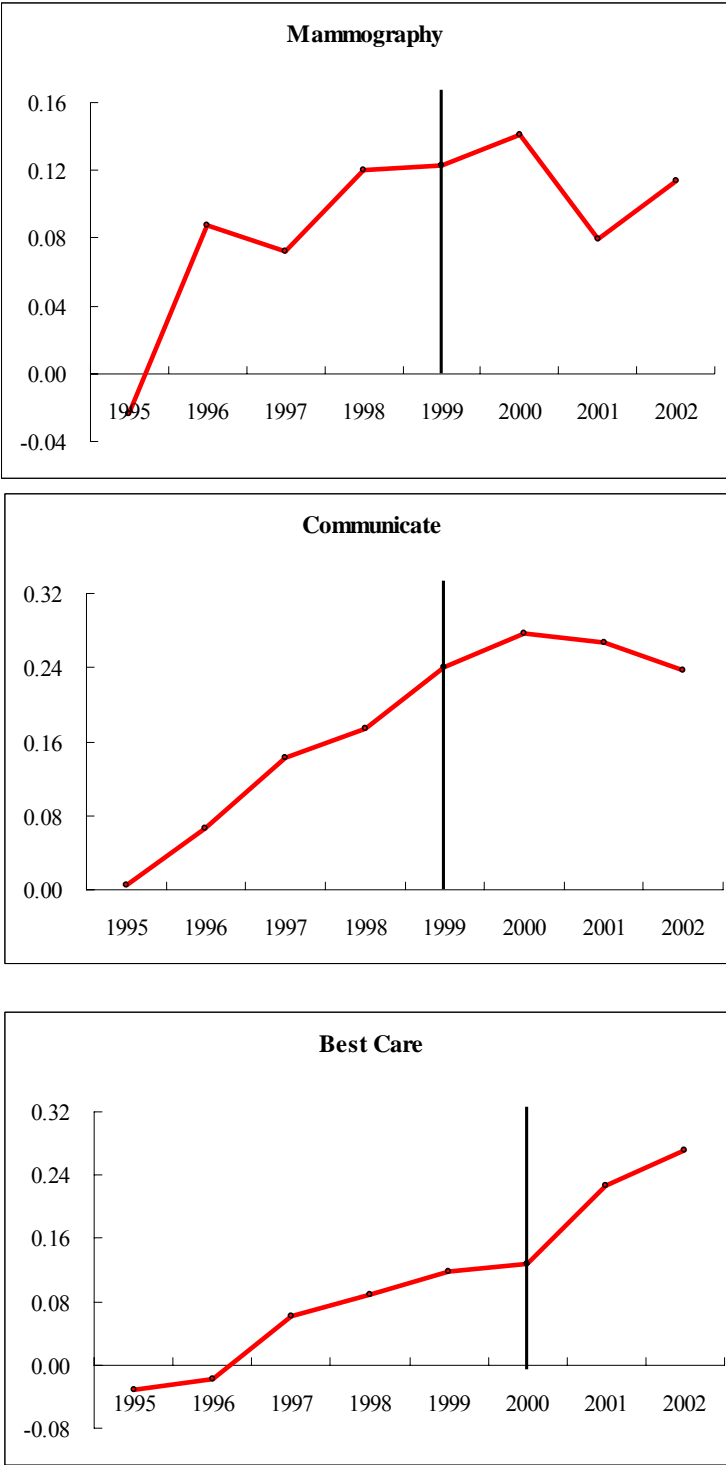
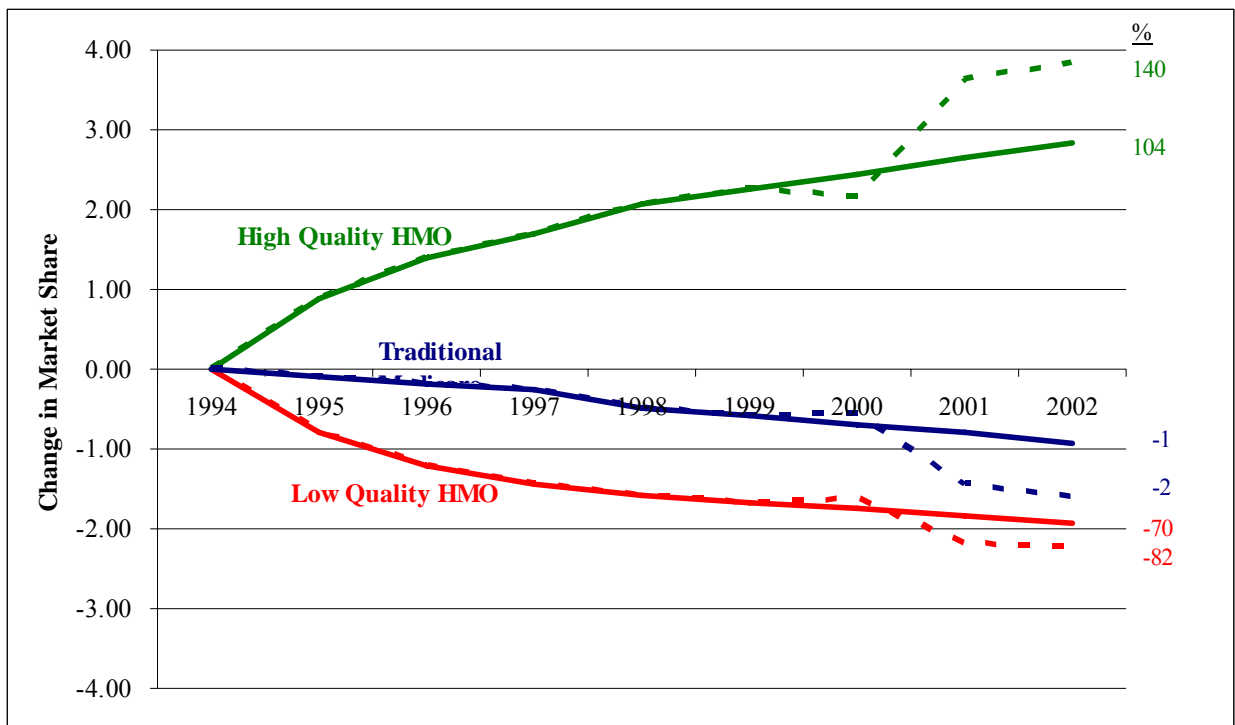


Figure 3. Estimated Coefficients on Score*Year Interactions



Notes: Coefficient estimates from 3 separate models in which each score is interacted with individual year dummies. Data is reported in Appendix Table 2.

Figure 4. Effect of Quality on Predicted Plan Market Shares Over Time



Notes: Figure is based on duopoly simulation results in Table 5. Solid lines depict share changes associated with market-based learning only; dashed lines add report-card learning.

Appendix: Estimation*

The model differs from a standard nested logit due to the inclusion of a separate intercept for each income quintile. This produces different mean utility equations for each quintile q . These are associated with the quintile-specific choice probabilities, $\{s_{jc(s)t}^q\}_{q=1,\dots,Q}$, in the following way, derived by Berry (1994):

$$\delta_{jc(s)t}^q \equiv \ln(s_{jc(s)t}^q) - \ln(s_{0c(s)t}^q) = \alpha p_{js(c)t} + x_{js(c)t} \beta + \xi_{js(c)t} + \gamma^q + \sigma \ln(s_{(j/g)c(s)t}^q) \quad (\text{A1})$$

However, since the observed market shares are weighted averages of these choice probabilities, with the weights representing the share of the population in each income quintile, the closed form inversion formula no longer applies. We therefore use BLP's contraction mapping theorem to derive the mean utility numerically.

An important characteristic of our specification is that the quintile-specific intercepts have an impact only on the choice of the nest but not on the choice of HMO plan within the nest. As a result, the choice probabilities over individual HMO plans are identical across income quintiles, conditional on the choice of the HMO nest. We can take advantage of this feature to replace a part of the numerical inversion procedure with a simple formula. For this, we designate a reference HMO plan, plan 1, in each market and define the differential mean utility of each plan as $\Delta \delta_{jc(s)t}^q \equiv \delta_{jc(s)t}^q - \delta_{1c(s)t}^q$. It can be shown that the differential mean utility is common across income quintiles and coincides with the log difference of the common conditional choice probabilities:

$$\Delta \delta_{jc(s)t} = \ln(s_{(j/g)s(c)t}) - \ln(s_{(1/g)c(s)t}) \quad (\text{A2})$$

Next, note $\Delta\delta_{1c(s)t} = 0$ by construction and $s_{(1/g)c(s)t} = \frac{1}{1 + \sum_{k=2}^J \exp(\Delta\delta_{kc(s)t})}$.

It remains to obtain $\{\delta_{1c(s)t}^q\}_{q=1,\dots,Q}$ to finalize the estimation equation. This segment of estimation exploits the observed choice of the nest and requires BLP's numerical inversion procedure. First, rewrite the quintile-specific market share of the outside good as a function of quintile-specific mean utility and the observed within share:

$$s_{0c(s)t}^q = \frac{1}{1 + \exp(\delta_{1c(s)t}^q) s_{(1/g)c(s)t}^{-1}}. \quad (\text{A3})$$

The aggregate market share of the outside good is a weighted average of the quintile-specific shares:

$$s_{0c(s)t} = \sum_{q=1}^Q \lambda_{c(s)t}^q s_{0c(s)t}^q, \quad (\text{A4})$$

where $\lambda_{c(s)t}^q$ are the weights. Holding the quintile-specific intercepts $\{\gamma^q\}_{q=1,\dots,Q}$ fixed, the function $f(\delta_{0c(s)t}) = \delta_{0c(s)t} + \ln(s_{0c(s)t}) - \ln(s_{0c(s)t}(\delta_{0c(s)t}))$ satisfies all the conditions of BLP's contraction mapping theorem, and we can obtain $\delta_{0c(s)t}$ as the unique fixed point of $f(\cdot)$ via iteration.

*Prepared by Yongbae Lee, Northwestern University.

Table 1. Descriptive Statistics

	Mean	Std. Dev.
<u>Plan Characteristics</u>		
Enrollment (#)	3,559	9,134
Share of county eligibles (%)	4.58	6.60
Share of county HMO enrollment (%)	49.98	41.66
<i>Reported Quality Measures</i>		
Mammography (%)	75.71	7.39
Communicate (%)	69.95	4.91
Best Care (%)	49.52	6.22
<i>Unreported Quality Measures</i>		
Betablocker (%)	81.20	12.66
Diabetic Eye Exams (%)	59.11	12.71
Ambulatory Visit (%)	88.72	8.03
Monthly premium (\$)	16.56	24.73
Affiliate in <i>U.S. News</i> (%)	65.17	47.65
CMS monthly payment rate (\$)	495.53	96.62
Prescription drug coverage (%)	70.19	45.39
<u>Market Characteristics</u>		
Number of rivals (#)	2.24	2.35
Number of rivals belonging to a chain (#)	1.70	1.97
Number of not-for-profit rivals (#)	1.08	1.27
Number of IPA rivals (#)	1.17	1.53
Stable population share, 1995 to 2000 (%)	79.70	9.40
Medicare HMO penetration rate, 1994 (%)	8.67	11.87
Percent of population aged 65-74, 2000 (%)	7.10	2.21
Percent with college degree, 2000 (%)	15.78	6.51

Notes: N=8212. The unit of observation is the plan-county-year. Sample includes observations with 10 or more Medicare enrollees and nonmissing data for all variables. Quality measures correspond to data reported in *Medicare & You 2000* (2001 for *best care*). *Stable population share* is the share of a county's 1995 population still living in the county in 2000. All variables are described in detail in the text.

Table 2. Market Characteristics

Number of Plans	Number of Markets	Mean of (Max-Min) quality scores		
		[Mean of (Max-Min) standardized quality scores]		
		Mammography	Communicate	Best care
1	240	-	-	-
2	114	8.85 [.86]	2.88 [.59]	5.70 [.87]
3+	117	15.23 [1.48]	7.32 [1.49]	10.67 [1.64]
Total	471	12.08 [1.17]	5.13 [1.04]	8.21 [1.26]

Notes: Sample includes all markets (=counties) in 2000. Quality scores correspond to data reported in *Medicare & You 2000* (2001 for *best care*). Standardized values have mean zero and a standard error of 1.

Table 3. Correlation Matrix for Quality Scores

	Mammography	Communicate	Best Care	Unreported Composite
Mammography	1.00			
Communicate	0.10	1.00		
Best Care	0.02	0.82	1.00	
Unreported composite	0.73	0.17	0.05	1.00

Notes: Sample includes all markets (=counties) in 2000. Quality measures correspond to data reported in *Medicare & You 2000* (2001 for *best care*).

Table 4. Effect of Quality on Mean Plan Utility

	(1)	(2)	(3)	(4)
Market Learning				
Mammography*ln(year)	0.100** (0.036)	0.065 (0.048)		
Communicate*ln(year)	0.127† (0.066)	0.095 (0.074)		
Best care*ln(year)	0.024 (0.073)	0.059 (0.083)		
Unrep. Composite*ln(year)		0.063 (0.072)		
Composite*ln(year)			0.281*** (0.067)	0.280*** (0.067)
Report Card Effect				
Mammography*post	-0.011 (0.038)	-0.012 (0.045)	0.001 (0.045)	0.004 (0.045)
Communicate*post	-0.051 (0.036)	-0.059 (0.039)	-0.023 (0.042)	-0.014 (0.043)
Best care*post	0.144** (0.055)	0.157** (0.060)	0.177* (0.069)	0.163* (0.071)
Unreported composite*post		0.031 (0.103)	-0.025 (0.088)	-0.037 (0.089)
Price				
Monthly premium	0.003 (0.005)	0.001 (0.006)	0.001 (0.004)	0.001 (0.005)
Benefits				
Prescription drug coverage				0.025 (0.042)
Income Quintile Fixed Effects (relative to the highest quintile)				
Quintile 1	0.166 (0.170)	0.159 (0.170)	0.158 (0.170)	0.154 (0.171)
Quintile 2	0.160 (0.185)	0.157 (0.185)	0.159 (0.185)	0.162 (0.185)
Quintile 3	0.279† (0.150)	0.278† (0.149)	0.286† (0.150)	0.287† (0.150)
Quintile 4	0.406*** (0.116)	0.413*** (0.116)	0.412*** (0.116)	0.410*** (0.116)
Nesting Parameter	0.837*** (0.044)	0.837*** (0.043)	0.839*** (0.043)	0.837*** (0.043)
N	8212	8212	8212	8212

Notes: All specifications include plan, county, and state-year fixed effects. *Post* is an indicator variable that takes a value of one beginning in 2000 (2001 for best care interactions). Z-scores are used for all quality measures (composite, mammography, communicate, best care, and unreported composite). Estimation is by 3SGMM; price and the within-nest share are treated as endogenous. Standard errors are adjusted for correlation in residuals for the same plan-county over time. † denotes p<.10, * denotes p<.05, ** denotes p<.01, *** denotes p<.001

**Table 5. Evolution of Predicted Market Shares in Hypothetical Markets:
Simulations Incorporate Random Shocks to Unobserved Plan Quality**

No Report Card	1994	1995	1996	1997	1998	1999	2000	2001	2002	Δ	$\% \Delta$
<i>Monopoly Market</i>											
Sole plan (Low quality)	2.74 (2.12)	2.44 (1.91)	2.27 (1.74)	2.12 (1.62)	2.08 (1.55)	1.99 (1.51)	1.95 (1.59)	1.91 (1.48)	1.89 (1.59)	-0.85 (0.00)	-31.2%
Sole plan (Medium quality)	2.74 (2.12)	2.76 (2.12)	2.75 (2.06)	2.71 (1.99)	2.76 (1.99)	2.73 (1.99)	2.74 (2.14)	2.75 (2.03)	2.77 (2.20)	0.03	1.1%
Sole plan (High quality)	2.74 (2.12)	3.11 (2.35)	3.33 (2.41)	3.45 (2.42)	3.64 (2.54)	3.73 (2.59)	3.84 (2.84)	3.93 (2.75)	4.05 (2.99)	1.31	47.8%
<i>Duopoly Market</i>											
Low quality plan	2.74 (3.45)	1.94 (3.10)	1.54 (2.73)	1.30 (2.63)	1.15 (2.56)	1.06 (2.55)	0.99 (2.35)	0.89 (2.30)	0.82 (2.23)	-1.92	-70.1%
High quality plan	2.74 (3.50)	3.63 (3.77)	4.14 (3.83)	4.44 (3.79)	4.81 (3.96)	5.00 (4.00)	5.18 (4.29)	5.39 (4.15)	5.58 (4.39)	2.84	103.7%
<i>Triopoly Market</i>											
Low quality plan	2.74 (4.36)	2.03 (3.82)	1.60 (3.62)	1.38 (3.40)	1.18 (3.08)	1.06 (2.97)	0.99 (3.04)	0.96 (2.97)	0.85 (2.65)	-1.89	-69.1%
Medium quality plan	2.74 (4.33)	2.63 (4.30)	2.52 (4.09)	2.44 (4.12)	2.42 (4.22)	2.38 (4.29)	2.39 (4.18)	2.32 (4.21)	2.24 (4.17)	-0.50	-18.1%
High quality plan	2.74 (4.38)	3.67 (4.84)	4.28 (5.00)	4.63 (5.01)	5.09 (5.29)	5.34 (5.34)	5.55 (5.68)	5.79 (5.56)	6.06 (5.81)	3.32	121.1%

**Table 5 (continued). Evolution of Predicted Market Shares in Hypothetical Markets:
Simulations Incorporate Random Shocks to Unobserved Plan Quality**

With Report Card	1994	1995	1996	1997	1998	1999	2000	2001	2002	Δ	$\% \Delta$
<i>Monopoly Market</i>											
Sole plan (Low quality)	2.74 (2.12)	2.44 (1.91)	2.27 (1.74)	2.12 (1.62)	2.08 (1.55)	1.99 (1.51)	2.02 (1.64)	1.67 (1.31)	1.65 (1.42)	-1.09	-39.8%
Sole plan (Medium quality)	2.74 (2.12)	2.76 (2.12)	2.75 (2.06)	2.71 (1.99)	2.76 (1.99)	2.73 (1.99)	2.74 (2.14)	2.75 (2.03)	2.77 (2.20)	0.03	1.1%
Sole plan (High quality)	2.74 (2.12)	3.11 (2.35)	3.33 (2.41)	3.45 (2.42)	3.64 (2.54)	3.73 (2.59)	3.70 (2.76)	4.48 (3.06)	4.61 (3.31)	1.87	68.1%
<i>Duopoly Market</i>											
Low quality plan	2.74 (3.45)	1.94 (3.10)	1.54 (2.73)	1.30 (2.63)	1.15 (2.56)	1.06 (2.55)	1.12 (2.47)	0.56 (1.91)	0.51 (1.84)	-2.23	-81.5%
High quality plan	2.74 (3.50)	3.63 (3.77)	4.14 (3.83)	4.44 (3.79)	4.81 (3.96)	5.00 (4.00)	4.91 (4.21)	6.37 (4.44)	6.57 (4.69)	3.83	139.8%
<i>Triopoly Market</i>											
Low quality plan	2.74 (4.36)	2.03 (3.82)	1.60 (3.62)	1.38 (3.40)	1.18 (3.08)	1.06 (2.97)	1.12 (3.19)	0.60 (2.48)	0.52 (2.15)	-2.22	-81.1%
Medium quality plan	2.74 (4.33)	2.63 (4.30)	2.52 (4.09)	2.44 (4.12)	2.42 (4.22)	2.38 (4.29)	2.46 (4.19)	2.05 (4.13)	1.98 (4.08)	-0.76	-27.7%
High quality plan	2.74 (4.38)	3.67 (4.84)	4.28 (5.00)	4.63 (5.01)	5.09 (5.29)	5.34 (5.34)	5.22 (5.56)	7.10 (5.98)	7.38 (6.22)	4.64	169.2%

Notes: Tables report mean market shares (standard errors) from simulations using the model in Table 4, column 3. Each plan has the same fixed effect, selected so that mean market share in 1994 is 2.74 percentage points (the national average in that year). The number of simulations is 10,000 for each cell.

**Table 6. Evolution of Predicted Market Shares in Hypothetical Markets:
Simulations Incorporate Random Shocks to Model Parameters**

No Report Card	1994	1995	1996	1997	1998	1999	2000	2001	2002	Δ	$\% \Delta$
<i>Monopoly Market</i>											
Sole plan (Low quality)	2.74 (0.23)	2.42 (0.22)	2.26 (0.22)	2.15 (0.23)	2.06 (0.23)	2.00 (0.23)	1.95 (0.24)	1.90 (0.24)	1.86 (0.24)	-0.88 (0.00)	-32.1%
Sole plan (Medium quality)	2.74 (0.23)	2.74 (0.23)	2.74 (0.23)	2.74 (0.23)	2.74 (0.23)	2.74 (0.23)	2.74 (0.23)	2.74 (0.23)	2.74 (0.23)	0.00	0.0%
Sole plan (High quality)	2.74 (0.23)	3.10 (0.28)	3.33 (0.32)	3.51 (0.36)	3.65 (0.39)	3.77 (0.42)	3.87 (0.45)	3.97 (0.47)	4.05 (0.50)	1.31	47.8%
<i>Duopoly Market</i>											
Low quality plan	2.74 (0.23)	1.02 (0.31)	0.52 (0.27)	0.32 (0.23)	0.22 (0.19)	0.16 (0.17)	0.13 (0.15)	0.10 (0.13)	0.09 (0.12)	-2.65	-96.8%
High quality plan	2.74 (0.23)	4.71 (0.55)	5.53 (0.65)	6.00 (0.71)	6.33 (0.76)	6.58 (0.80)	6.79 (0.84)	6.97 (0.87)	7.13 (0.91)	4.39	160.3%
<i>Triopoly Market</i>											
Low quality plan	2.74 (0.22)	1.08 (0.30)	0.58 (0.28)	0.37 (0.24)	0.26 (0.21)	0.20 (0.18)	0.16 (0.16)	0.13 (0.15)	0.11 (0.14)	-2.63	-96.1%
Medium quality plan	2.74 (0.22)	2.31 (0.26)	1.85 (0.34)	1.53 (0.38)	1.31 (0.40)	1.14 (0.40)	1.02 (0.40)	0.92 (0.39)	0.84 (0.39)	-1.90	-69.3%
High quality plan	2.74 (0.22)	5.08 (0.68)	6.39 (0.95)	7.23 (1.10)	7.84 (1.20)	8.31 (1.28)	8.70 (1.34)	9.02 (1.39)	9.30 (1.44)	6.56	239.3%

**Table 6 (continued). Evolution of Predicted Market Shares in Hypothetical Markets:
Simulations Incorporate Random Shocks to Model Parameters**

With Report Card	1994	1995	1996	1997	1998	1999	2000	2001	2002	Δ	% Δ
<i>Monopoly Market</i>											
Sole plan (Low quality)	2.74 (0.23)	2.42 (0.22)	2.26 (0.22)	2.15 (0.23)	2.06 (0.23)	2.00 (0.23)	2.04 (0.34)	1.66 (0.23)	1.63 (0.23)	-1.11	-40.5%
Sole plan (Medium quality)	2.74 (0.23)	2.74 (0.23)	2.74 (0.23)	2.74 (0.23)	2.74 (0.23)	2.74 (0.23)	2.74 (0.23)	2.74 (0.23)	2.74 (0.23)	0.00	0.0%
Sole plan (High quality)	2.74 (0.23)	3.10 (0.28)	3.33 (0.32)	3.51 (0.36)	3.65 (0.39)	3.77 (0.42)	3.75 (0.62)	4.54 (0.69)	4.64 (0.72)	1.90	69.1%
<i>Duopoly Market</i>											
Low quality plan	2.74 (0.23)	1.02 (0.31)	0.52 (0.27)	0.32 (0.23)	0.22 (0.19)	0.16 (0.17)	0.36 (0.62)	0.03 (0.08)	0.03 (0.07)	-2.71	-98.9%
High quality plan	2.74 (0.23)	4.71 (0.55)	5.53 (0.65)	6.00 (0.71)	6.33 (0.76)	6.58 (0.80)	6.39 (1.41)	8.01 (1.21)	8.18 (1.25)	5.44	198.5%
<i>Triopoly Market</i>											
Low quality plan	2.74 (0.22)	1.08 (0.30)	0.58 (0.28)	0.37 (0.24)	0.26 (0.21)	0.20 (0.18)	0.40 (0.64)	0.04 (0.09)	0.04 (0.08)	-2.70	-98.7%
Medium quality plan	2.74 (0.22)	2.31 (0.26)	1.85 (0.34)	1.53 (0.38)	1.31 (0.40)	1.14 (0.40)	1.27 (0.68)	0.51 (0.33)	0.47 (0.32)	-2.27	-82.9%
High quality plan	2.74 (0.22)	5.08 (0.68)	6.39 (0.95)	7.23 (1.10)	7.84 (1.20)	8.31 (1.28)	8.02 (2.25)	10.76 (1.84)	11.02 (1.88)	8.28	302.1%

Notes: Tables report mean market shares (standard errors) from simulations using the model in Table 4, column 3. Each plan has the same fixed effect, selected so that mean market share in 1994 is 2.74 percentage points (the national average in that year). The number of simulations is 10,000 for each cell.

**Table 7. Simulated Outcomes in Duopoly Markets in 2002, with Report Card
Simulations Incorporate Random Shocks to Unobserved Plan Quality**

Market Shares

		<i>Plan 2 Quality</i>								
		Low			Medium			High		
<i>Plan 1 Quality</i>		Plan 1	Plan 2	Total	Plan 1	Plan 2	Total	Plan 1	Plan 2	Total
Low	Mean	1.69	1.62	3.31						
	S.D.	(2.31)	(2.16)	(2.41)						
Medium	Mean	3.63	0.98	4.61	2.79	2.68	5.48			
	S.D.	(3.37)	(2.10)	(3.20)	(3.58)	(3.39)	(3.58)			
High	Mean	6.57	0.51	7.08	5.93	1.61	7.55	4.54	4.37	8.90
	S.D.	(4.69)	(1.84)	(4.49)	(5.02)	(3.28)	(4.62)	(5.39)	(5.20)	(5.11)

Growth Rates

		<i>Plan 2 Quality</i>								
		Low			Medium			High		
<i>Plan 1 Quality</i>		Plan 1	Plan 2	Total	Plan 1	Plan 2	Total	Plan 1	Plan 2	Total
Low	Mean	-38.40%	-40.92%	-39.66%						
Medium	Mean	32.45%	-64.11%	-15.83%	1.91%	-2.06%	-0.08%			
High	Mean	139.84%	-81.51%	29.17%	116.60%	-41.06%	37.77%	65.54%	59.41%	62.48%

Notes: Table reports mean market shares (standard errors) from simulations using the model in Table 4, column 3. Each plan has the same fixed effect, selected so that mean market share in 1994 is 2.74 percentage points (the national average in that year). Number of simulations is 10,000 for each cell. Growth rates are calculated using 2.74 as the initial market share.

Table 8. Sources of Market Learning

	(1)	(2)	(3)	(4)	(5)
Market Learning					
Composite*ln(year)	0.281*** (0.067)	0.263*** (0.065)	0.323*** (0.071)	0.223*** (0.064)	0.251*** (0.070)
Composite*ln(year)*stable population		0.092** (0.032)			0.099** (0.033)
Composite*ln(year)*HMO penetration			-0.058** (0.021)		-0.051** (0.020)
Composite*ln(year)*U.S. News				0.173** (0.063)	0.142* (0.064)
Report Card Effect					
Mammography*post	0.001 (0.045)	0.009 (0.045)	0.009 (0.045)	0.000 (0.045)	0.015 (0.045)
Communicate*post	-0.023 (0.042)	-0.024 (0.041)	-0.024 (0.041)	-0.033 (0.040)	-0.035 (0.040)
Best care*post	0.177* (0.069)	0.170* (0.069)	0.179** (0.069)	0.183** (0.068)	0.179** (0.068)
Unreported composite*post	-0.025 (0.088)	-0.034 (0.088)	-0.031 (0.087)	-0.025 (0.088)	-0.037 (0.087)
Price					
Monthly Premium	0.001 (0.004)	0.001 (0.004)	0.001 (0.004)	-0.000 (0.004)	0.000 (0.004)
Income Quintile Fixed Effects (relative to the highest quintile)					
Quintile 1	0.158 (0.170)	0.161 (0.169)	0.160 (0.169)	0.158 (0.169)	0.160 (0.166)
Quintile 2	0.159 (0.185)	0.154 (0.184)	0.157 (0.185)	0.144 (0.184)	0.140 (0.184)
Quintile 3	0.286† (0.150)	0.280† (0.149)	0.285† (0.149)	0.289† (0.149)	0.280† (0.148)
Quintile 4	0.412*** (0.116)	0.401*** (0.115)	0.407*** (0.116)	0.420*** (0.115)	0.403*** (0.114)
Nesting Parameter	0.839*** (0.043)	0.843*** (0.042)	0.839*** (0.043)	0.838*** (0.043)	0.843*** (0.042)
N	8212	8212	8212	8212	8212

Notes: All specifications include plan, county, and state-year fixed effects. *Post* is an indicator variable that takes a value of one beginning in 2000 (2001 for best care interactions). Z-scores are used for all quality measures (composite, mammography, communicate, best care, and unreported composite), stable population and HMO penetration. U.S. News takes on a value of 1 if all plans in a county-year have affiliates that appeared in the U.S. News “Best HMOs” articles at least once, and 0 otherwise. Estimation is by 3SGMM; price and the within-nest share are treated as endogenous. Standard errors are adjusted for correlation in residuals for the same plan-county over time.

† denotes $p < .10$, * denotes $p < .05$, ** denotes $p < .01$, *** denotes $p < .001$

Table 9. Effect of Contemporaneous and Reported Quality on Mean Plan Utility

Market Learning	
(Lagged) contemporaneous mammography	0.083* (0.040)
(Lagged) contemporaneous best care	0.140*** (0.041)
Report Card Effect	
(Reported) mammography*post	0.075* (0.032)
(Reported) best care*post	0.180** (0.055)
Price	
Monthly premium	-0.008† (0.004) (0.004)
Income Quintile Fixed Effects (relative to the highest quintile)	
Quintile 1	0.205 (0.184)
Quintile 2	-0.219 (0.255)
Quintile 3	0.198 (0.147)
Quintile 4	0.079 (0.158)
Nesting Parameter	1.129*** (0.071)
N	3380

Notes: All specifications include plan, county, and state-year fixed effects. *Post* is an indicator variable that takes a value of one beginning in 2000 for *mammography*, and 2001 for *best care*. Annual z-scores are used for *mammography* and *best care*. Estimation is by 3SGMM; price and the within-nest share are treated as endogenous. Standard errors are adjusted for correlation in residuals for the same plan-county over time.

† denotes p<.10, * denotes p<.05, ** denotes p<.01, *** denotes p<.001

Appendix Table 1. Scores Reported in *Medicare & You*

Measure	Description	Data Years (Sources) for Scores Reported in 2000	Data Years (Sources) for Scores Reported in 2001
mammography	% of women 50-69 receiving a mammogram within past 2 years	1996-1997 (1998 HEDIS file)	1997-1998 (1999 HEDIS file)
communicate	% enrollees reporting the doctors in their plan “always communicate well”	1998 (2000 Medicare Compare Database)	Not reported
best care	% enrollees rating their own care a 10 out of 10	Not reported	1999 (2001 Medicare Compare Database)
disenrollment	% enrollees who voluntarily disenrolled	1998 (2001 Medicare Compare Database)	1999 (2001 Medicare Compare Database)

Note: Measures matched to enrollment data are shaded in gray.

**Appendix Table 2. Effect of Quality on Mean Plan Utility,
Separate Models For Each Score**

	(1)	(2)	(3)
Score	Mammography	Communicate	Best Care
Score*1995	-0.023 (.052)	0.004 (.041)	-0.032 (.043)
Score*1996	0.088 (.059)	0.066 (.059)	-0.017 (.061)
Score*1997	0.072 (.061)	0.143* (.062)	0.062 (.063)
Score*1998	0.120 [†] (.062)	0.174** (.063)	0.089 (.064)
Score*1999	0.123 [†] (.064)	0.241*** (.066)	0.119 [†] (.066)
Score*2000	0.141* (.066)	0.277*** (.069)	0.127 [†] (.067)
Score*2001	0.080 (.064)	0.267*** (.072)	0.226** (.074)
Score*2002	0.114 (.073)	0.237** (.080)	0.271** (.092)
Price			
Monthly premium	.004 (.004)	.009* (.004)	.004 (.004)
Nesting parameter	0.836*** (.045)	0.824*** (.045)	0.836*** (.044)
N	8212	8212	8212

Notes: All specifications include plan, county, state-year, and income quintile fixed effects. Z-scores are used for all quality measures. Estimation is by 3SGMM; price and the within-nest share are treated as endogenous. Standard errors are adjusted for correlation in residuals for the same plan-county over time.

† denotes p<.10, * denotes p<.05, ** denotes p<.01, *** denotes p<.001

Appendix Table 3. Panel Quality Data

	1998	1999	2000	2001
Mammography	76.47 (6.15)	75.94 (6.58)	76.34 (6.58)	76.67 (5.68)
Best Care	50.21 (7.33)	49.60 (6.22)	48.30 (6.01)	43.31 (6.37)
N (number of plan-counties)	1124	1024	870	748

Notes: The unit of observation is the plan-county-year. Sample includes observations with 10 or more Medicare enrollees and nonmissing data for all reported quality measures. All data is reported in percentages unless otherwise indicated. Standard deviations are in parentheses.

**Appendix Table 4. Effect of Quality on Mean Plan Utility
Results Without State-Year Interactions**

	(1)	(2)	(3)	(4)
Market Learning				
Mammography*ln(year)	-0.026 (0.035)	-0.110* (0.054)		
Communicate*ln(year)	-0.076 (0.061)	-0.108 [†] (0.063)		
Best care*ln(year)	0.422*** (0.064)	0.451*** (0.065)		
Unrep. Composite*ln(year)		0.142* (0.070)		
Composite*ln(year)			0.458*** (0.056)	0.460*** (0.056)
Report Card Effect				
Mammography*post	0.252*** (0.050)	0.101 [†] (0.055)	-0.017 (0.048)	-0.016 (0.048)
Communicate*post	-0.152*** (0.029)	-0.169*** (0.031)	-0.090** (0.033)	-0.088** (0.033)
Best care*post	0.184*** (0.051)	0.180*** (0.051)	0.247*** (0.054)	0.242*** (0.055)
Unreported composite*post		0.292** (0.090)	0.084 (0.083)	0.077 (0.085)
Price				
Monthly premium	-0.030*** (0.005)	-0.030*** (0.005)	-0.021*** (0.005)	-0.021*** (0.005)
Benefits				
Prescription drug coverage				0.005 (0.042)
Income Group Fixed Effects (relative to the highest income group)				
Quintile 1	0.089 (0.188)	0.059 (0.188)	0.051 (0.183)	0.045 (0.183)
Quintile 2	0.128 (0.179)	0.143 (0.178)	0.153 (0.172)	0.146 (0.172)
Quintile 3	0.061 (0.165)	0.023 (0.167)	0.042 (0.161)	0.037 (0.160)
Quintile 4	0.088 (0.137)	0.094 (0.136)	0.087 (0.130)	0.088 (0.130)
Nesting Parameter	0.887*** (0.046)	0.887*** (0.046)	0.876*** (0.044)	0.873*** (0.045)
N	8212	8212	8212	8212

Notes: All specifications include plan and county fixed effects. Post is an indicator variable that takes a value of one beginning in 2000 (2001 for best care interactions). Z-scores are used for all quality measures (composite, mammography, communicate, best care, and unreported composite). Estimation is by 3SGMM; price and the within-nest share are treated as endogenous. Standard errors are adjusted for correlation in residuals for the same plan-county over time.

† denotes p<.10, * denotes p<.05, ** denotes p<.01, *** denotes p<.001